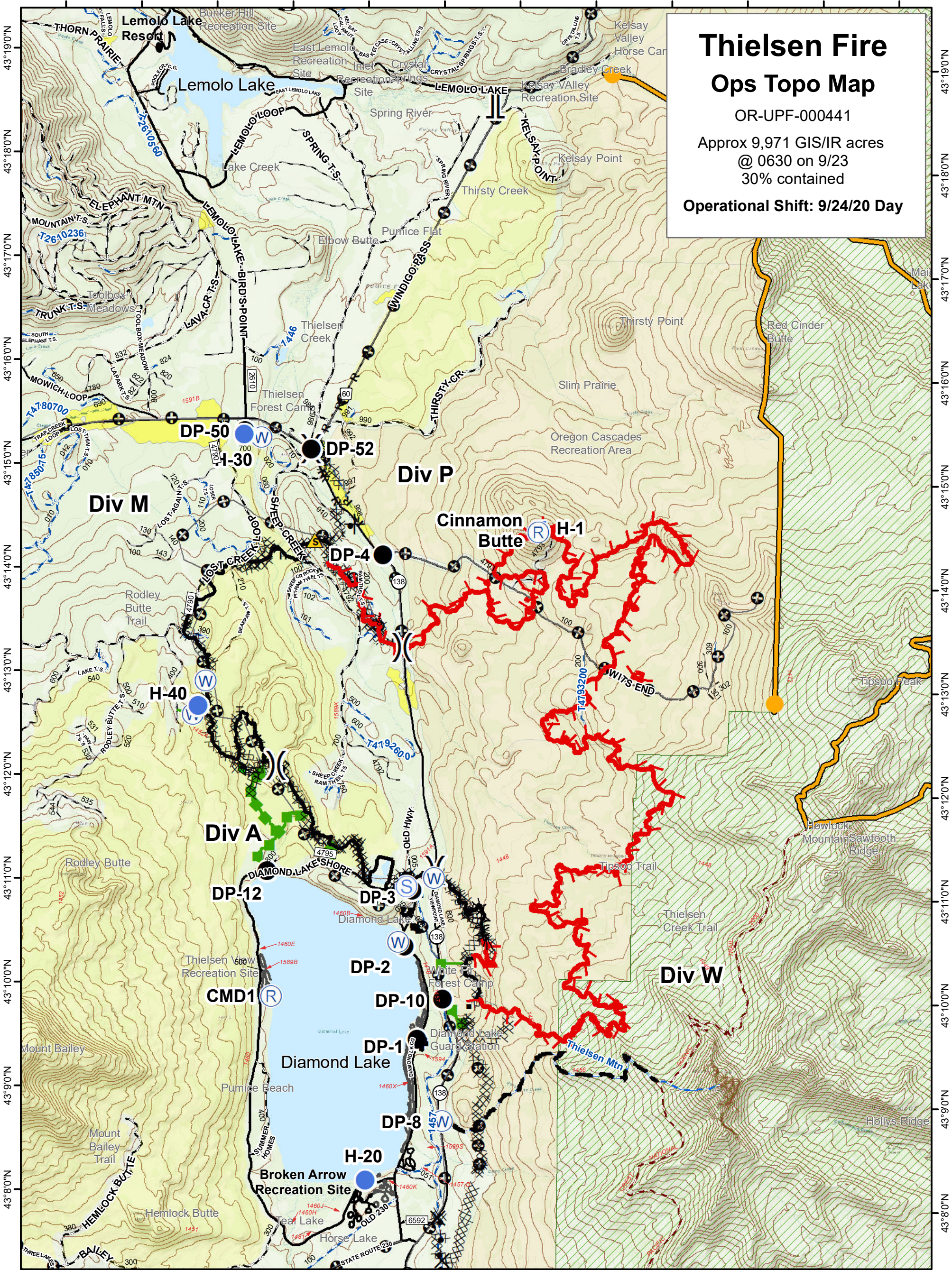


122°13'0"W 122°12'0"W 122°11'0"W 122°10'0"W 122°9'0"W 122°8'0"W 122°7'0"W 122°6'0"W 122°5'0"W 122°4'0"W 122°3'0"W 122°2'0"W



Thielsen Fire

Ops Topo Map

OR-UPF-000441

Approx 9,971 GIS/IR acres
@ 0630 on 9/23
30% contained

Operational Shift: 9/24/20 Day

122°13'0"W 122°12'0"W 122°11'0"W 122°10'0"W 122°9'0"W 122°8'0"W 122°7'0"W 122°6'0"W 122°5'0"W 122°4'0"W 122°3'0"W 122°2'0"W

Wildfire Daily Fire Perimeter	Water Development or Draft Site	H - H - Completed Hand Line	Management Action Point
Drop Point	Other	R - R - Road as Completed Line	Other
Helispot	Division Break	Line Break Completed	Timber Values at Risk
Lookout	Branch Break	Completed Plow Line	OCRA
Repeater	Uncontrolled Fire Edge	Proposed Dozer Line	Wilderness
Safety Zone	Contained Line	Fire Break Planned or Incomplete	Roadless Area
Staging Area	Completed Dozer Line	Planned Fire Line	FS Trails
Water Source	Escape Route	PacificCrestTrail	

0 1 2
Miles