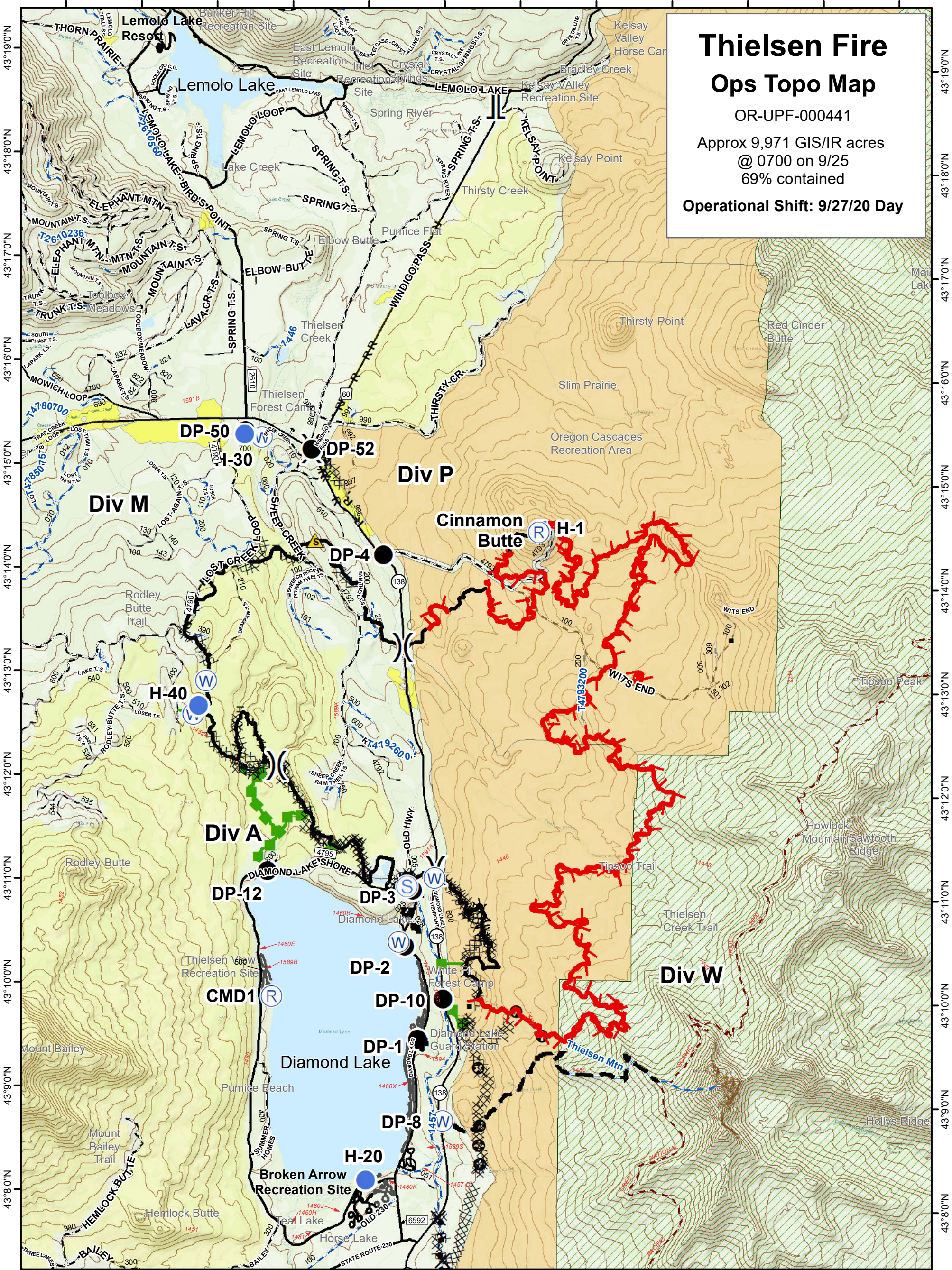


122°13'0"W 122°12'0"W 122°11'0"W 122°10'0"W 122°9'0"W 122°8'0"W 122°7'0"W 122°6'0"W 122°5'0"W 122°4'0"W 122°3'0"W 122°2'0"W



Thielsen Fire Ops Topo Map

OR-UPF-000441
 Approx 9,971 GIS/IR acres
 @ 0700 on 9/25
 69% contained
Operational Shift: 9/27/20 Day

122°13'0"W 122°12'0"W 122°11'0"W 122°10'0"W 122°9'0"W 122°8'0"W 122°7'0"W 122°6'0"W 122°5'0"W 122°4'0"W 122°3'0"W 122°2'0"W

Wildfire Daily Fire Perimeter	Water Development or Draft Site	Completed Hand Line	Other
Drop Point	Other	Road as Completed Line	Timber Values at Risk
Helispot	Division Break	Line Break Completed	OCRA
Lookout	Branch Break	Completed Plow Line	Wilderness
Repeater	Uncontrolled Fire Edge	Proposed Dozer Line	Roadless Area
Safety Zone	Contained Line	Fire Break Planned or Incomplete	FS Trails
Staging Area	Planned Fire Line	Completed Dozer Line	PacificCrestTrail
Water Source	Escape Route		

0 1 2
Miles

Created by: C.Vose GIS
Date Created: 9/26/2020 at 1230