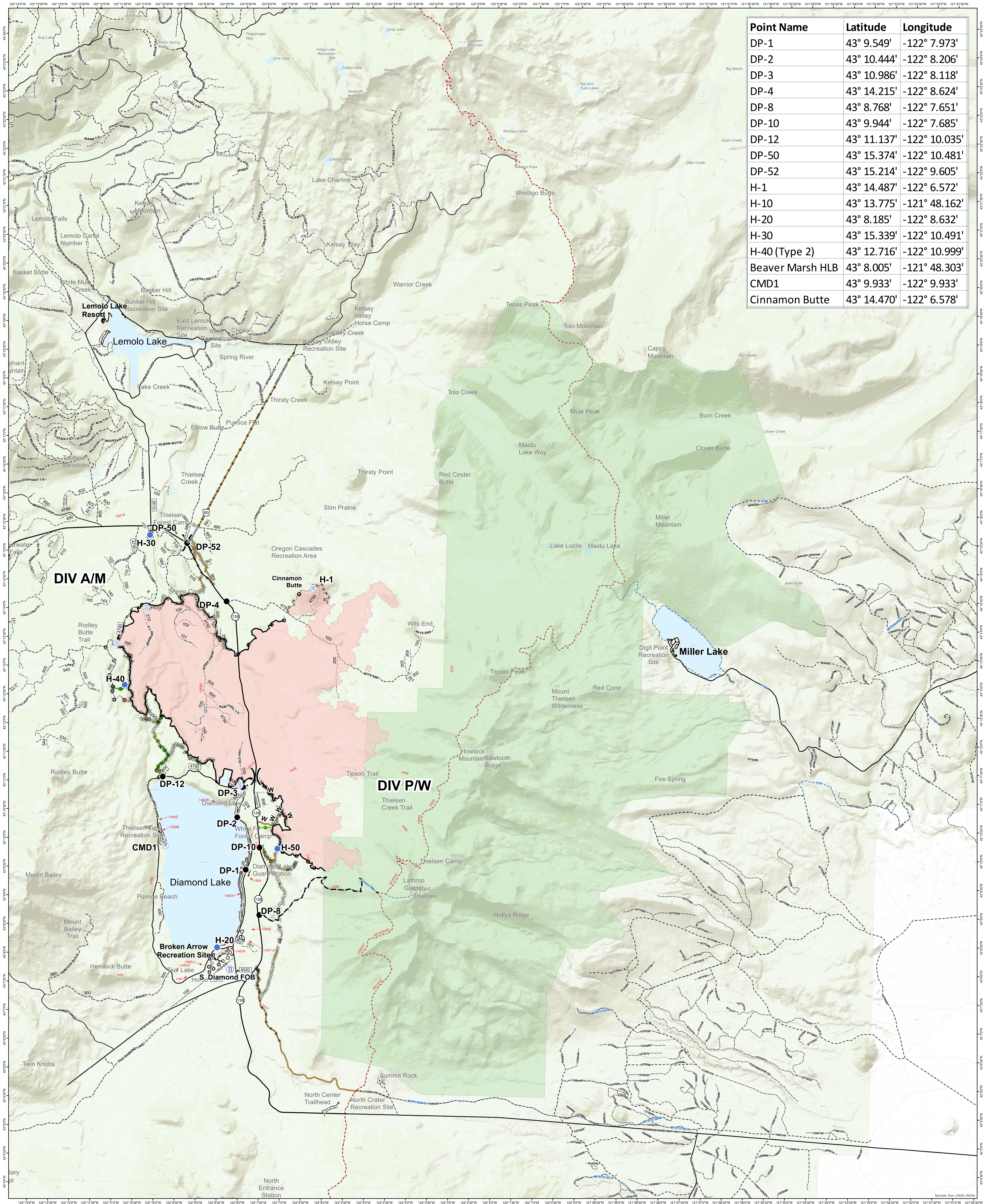
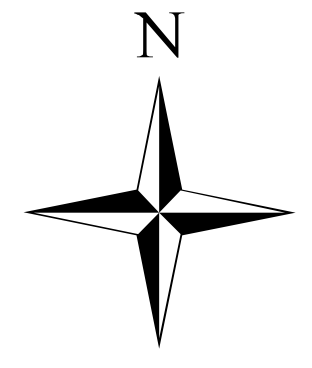


Point Name	Latitude	Longitude
DP-1	43° 9.549'	-122° 7.973'
DP-2	43° 10.444'	-122° 8.206'
DP-3	43° 10.986'	-122° 8.118'
DP-4	43° 14.215'	-122° 8.624'
DP-8	43° 8.768'	-122° 7.651'
DP-10	43° 9.944'	-122° 7.685'
DP-12	43° 11.137'	-122° 10.035'
DP-50	43° 15.374'	-122° 10.481'
DP-52	43° 15.214'	-122° 9.605'
H-1	43° 14.487'	-122° 6.572'
H-10	43° 13.775'	-121° 48.162'
H-20	43° 8.185'	-122° 8.632'
H-30	43° 15.339'	-122° 10.491'
H-40 (Type 2)	43° 12.716'	-122° 10.999'
Beaver Marsh HLB	43° 8.005'	-121° 48.303'
CMD1	43° 9.933'	-122° 9.933'
Cinnamon Butte	43° 14.470'	-122° 6.578'



# Thielsen Fire Transportation Map

OR-UPF-000441



Created by: Red Team GIS  
Date Created: 10/3/2020 9:55:17 AM

Operational Shift: 10/4 - 10/5/2020

- Drop Point
- Helispot
- Ⓡ Incident Base
- Ⓡ Lookout
- Ⓡ Repeater
- Ⓡ Staging Area
- Ⓡ Division Break
- Contained Line
- Ⓡ Completed Dozer Line
- Ⓡ Completed Hand Line
- Ⓡ Road as Completed Line
- Ⓡ Fire Break Planned or Incomplete
- Ⓡ Planned Fire Line
- Ⓡ Escape Route
- Ⓡ Repair Line
- Other
- ▭ Wildfire Daily Fire Perimeter
- ▭ Wilderness
- Ⓡ Win\_Trails