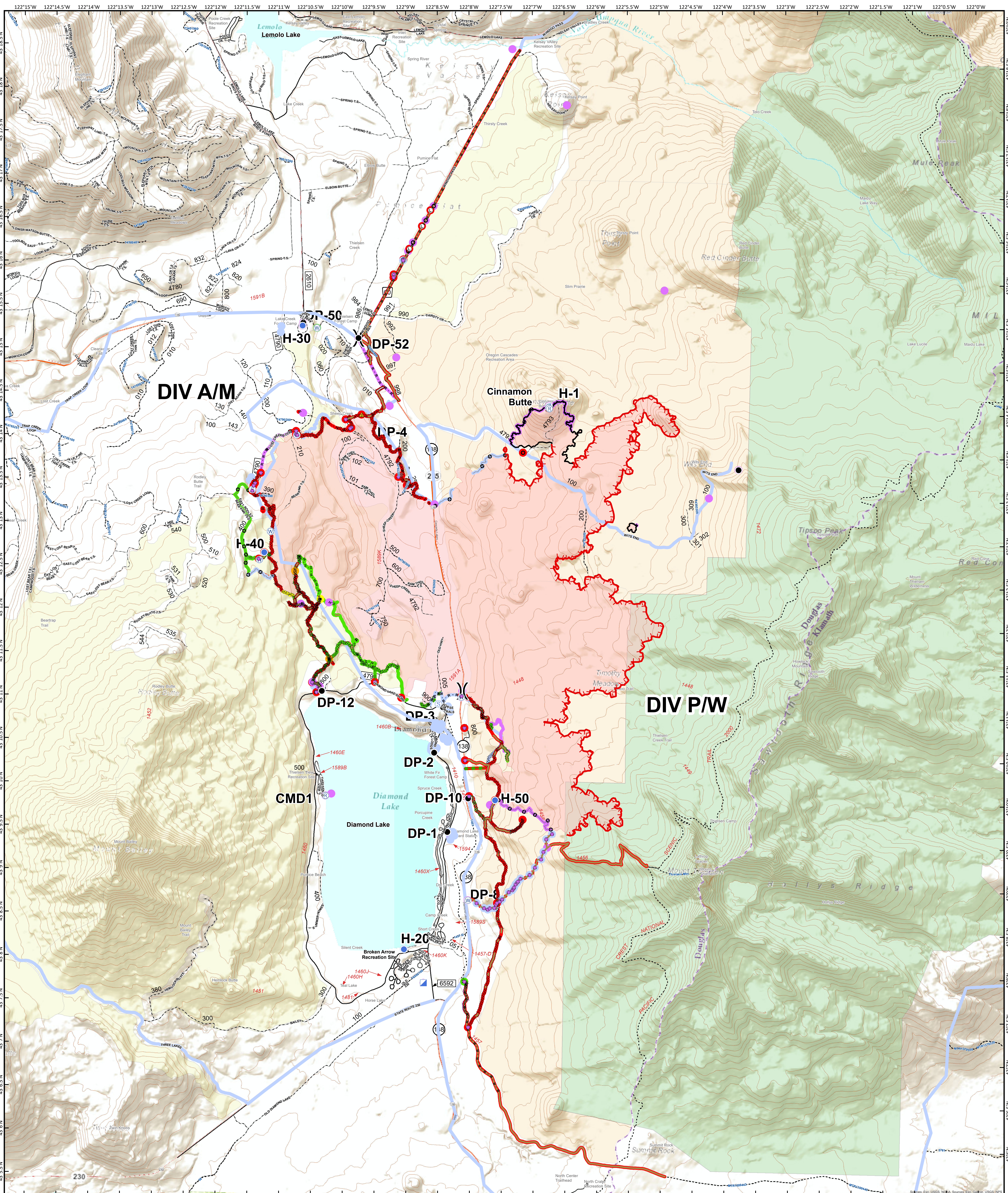
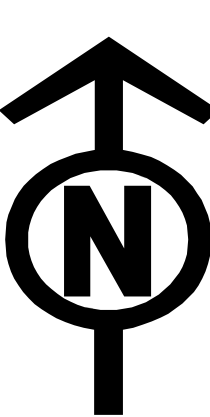


Suppression Repair Map



○ Culvert	⊙ Repeater	— Uncontrolled Fire Edge	— Access or Improved Road	● Completed - Inspected	● Completed - Inspected	▭ Wildfire Daily Fire Perimeter
● Drop Point	▲ Safety Zone	— Contained Line	— Fire Break Planned or Incomplete	● Completed - Ready for Inspection	● In Progress	▭ Oregon Cascades Recreation Area
■ Dozer Push	⊙ Staging Area	— Completed Dozer Line	— Escape Route	● In Progress	▭ Repair Needed	▭ Roadless Area
⊙ Helispot	⊙ Water Source	— Completed Hand Line	— Repair Line	● Repair Needed	▭ No Repair Needed	▭ Wilderness
⊙ Incident Command Post	⊙ Water Development or Draft Site	— Road as Completed Line	— Other	● No Repair Needed	▭ Unknown	
⊙ Landing or Log Deck	⊙ Other					
⊙ Lookout						
⊙ Repair Point						

10/7/2020 @ 2257
 NAD 1983 USFS R6 Albers
 B Kirk
 Latest Intel
 20201005 @ 1948