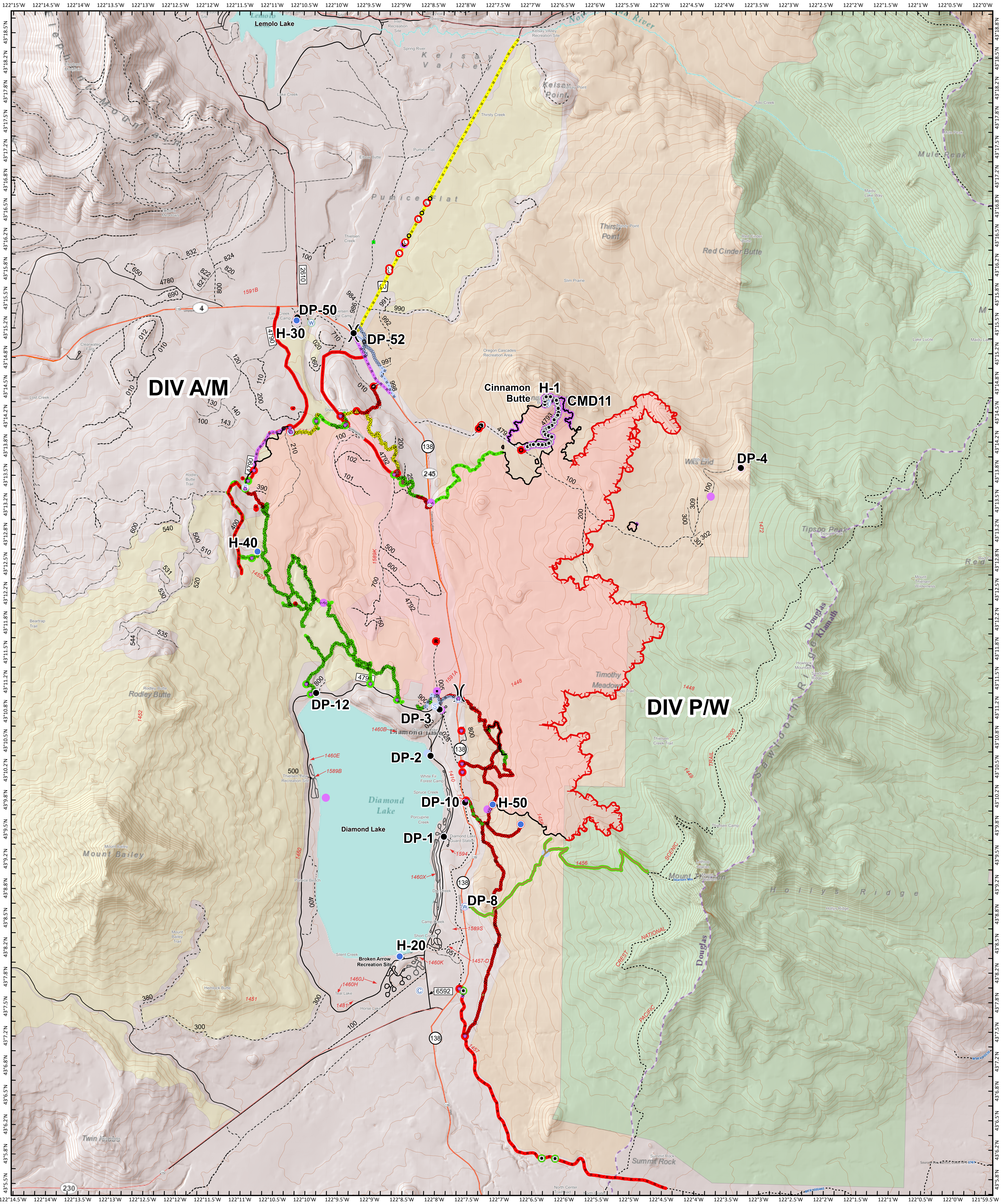


Suppression Repair Map



<ul style="list-style-type: none"> ⊙ Camp ⊖ Culvert ● Drop Point ⚡ Dozer Push ⚡ Helispot ⚡ Landmark ⚡ Landing or Log Deck ⚡ Lookout 	<ul style="list-style-type: none"> ⊙ Repair Point ⊖ Repeater ⊙ Resource Location ⊙ Road Repair ⊙ Safety Zone ⊙ Staging Area ⊙ Water Source ⊙ Water Development or Draft Site 	<ul style="list-style-type: none"> ⊙ Other ⊙ Division Break ⊙ Uncontrolled Fire Edge ⊙ Contained Line ⊙ Completed Dozer Line ⊙ Completed Hand Line 	<ul style="list-style-type: none"> — R - R Road as Completed Line — Access or Improved Road — Escape Route — Repair Line — Road Repair — Other — Completed - Inspected — In Progress — Repair Needed 	<ul style="list-style-type: none"> ● In Progress ● Repair Needed ● No Repair Needed ● Unknown ● Completed - Inspected ● In Progress ● Repair Needed 	<ul style="list-style-type: none"> — No Repair Needed — Other - See Comments — Unknown — Wildfire Daily Fire Perimeter — Oregon Cascades Recreation Area — Roadless Area — Wilderness
---	--	--	---	--	--

0 0.5 1 2 Miles

10/13/2020 @ 6:05 PM
 NAD 1983 USFS R6 Albers
 B Kirk
 Latest Intel:
 20201005 @ 1948