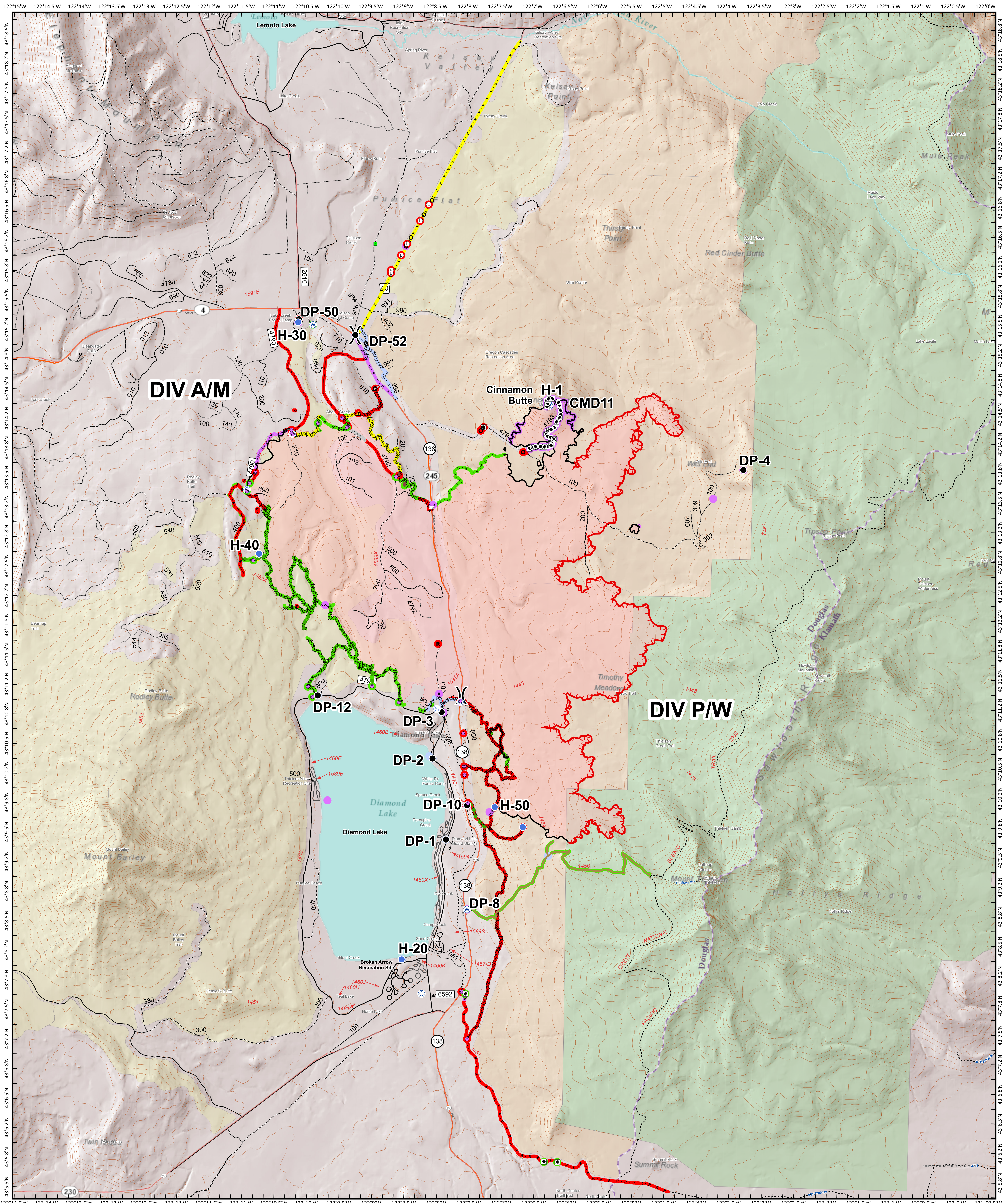
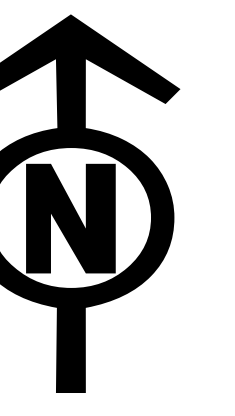


Suppression Repair Map



<ul style="list-style-type: none"> ○ Camp ○ Culvert ● Drop Point ■ Dozer Push ● Helispot ● Landmark ○ Landing or Log Deck ⊞ Lookout 	<ul style="list-style-type: none"> ○ Repair Point ○ Repeater ● Resource Location ⊞ Road Repair △ Safety Zone ○ Staging Area ○ Water Source ⊞ Water Development or Draft Site 	<ul style="list-style-type: none"> ■ Other ⊞ Division Break — Uncontrolled Fire Edge — Contained Line — Completed Dozer Line — Completed Hand Line 	<ul style="list-style-type: none"> — Road as Completed Line — Access or Improved Road — Escape Route — Repair Line — Road Repair — Other ● Completed - Inspected ● Completed - Inspected 	<ul style="list-style-type: none"> ● In Progress ● Repair Needed ● No Repair Needed ● Unknown ● Unknown ● Unknown ● Repair Needed 	<ul style="list-style-type: none"> — No Repair Needed — Other - See Comments — Wildfire Daily Fire Perimeter — Oregon Cascades Recreation Area — Roadless Area — Wilderness
---	--	--	--	--	---

0 0.5 1 2 Miles

10/12/2020 @ 8:27 PM
 NAD 1983 USFS R6 Albers
 B Kirk
 Latest Intel:
 20201005 @ 1948