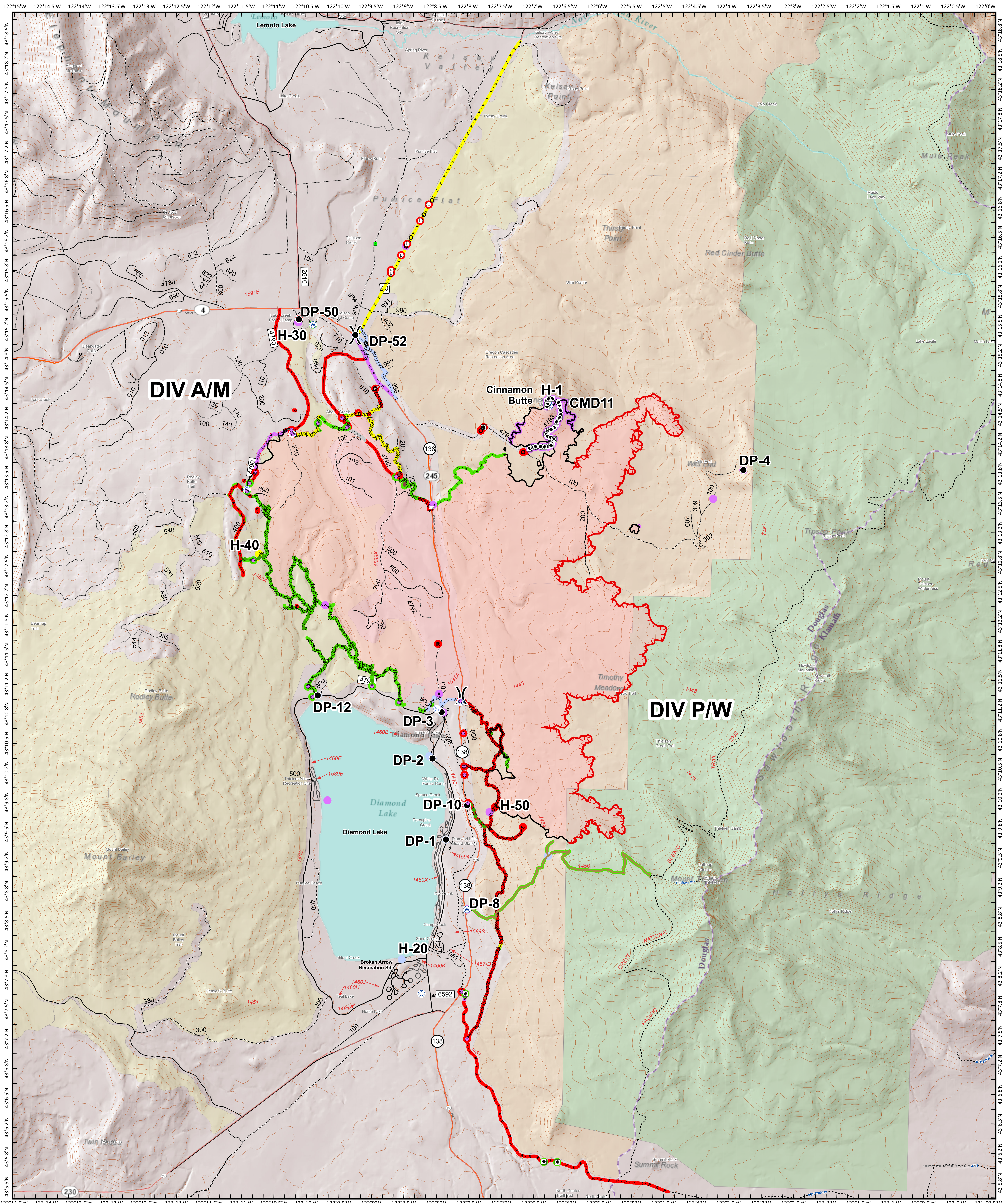
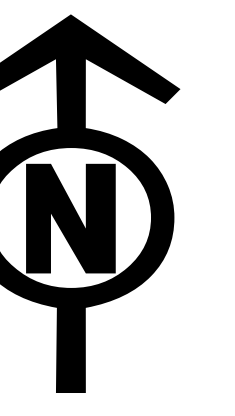


Suppression Repair Map



<ul style="list-style-type: none"> ⊙ Camp ⊖ Culvert ● Drop Point ⚡ Dozer Push ⬇ Landmark ⊞ Landing or Log Deck ⚡ Lookout ⊙ Repair Point 	<ul style="list-style-type: none"> ⊙ Repeater ⊞ Resource Location ⊞ Road Repair ⚠ Safety Zone ⊞ Staging Area ⊞ Water Source ⊞ Water Development or Draft Site ⊞ Other 	<ul style="list-style-type: none"> ⊞ Division Break — Uncontrolled Fire Edge — Contained Line ⊞ Completed Dozer Line ⊞ Completed Hand Line ⊞ Road as Completed Line 	<ul style="list-style-type: none"> — Access or Improved Road — Escape Route — Repair Line — Road Repair — Other ● Completed - Inspected ● Completed - In Progress ● In Progress 	<ul style="list-style-type: none"> ● Repair Needed ● No Repair Needed ● Unknown ● Unknown ● Repair Needed ● No Repair Needed 	<ul style="list-style-type: none"> — Other - See Comments — Unknown — Wildfire Daily Fire Perimeter — Oregon Cascades Recreation Area — Roadless Area — Wilderness
---	---	---	---	--	--

0 0.5 1 2 Miles

10/13/2020 @ 7:31 PM
 NAD 1983 USFS R6 Albers
 B Kirk
 Latest Intel:
 20201005 @ 1948