



Worthington IAP



Worthington Maps

# Worthington Fire

## Incident Action Plan

Monday 8/10/20 0600-2000

Medford District BLM and Southwest District ODF

OR-MED-000243

PD NCG5 (1502)



Southwest Oregon IMT3



Check in (first day only)

<b>Incident Objectives</b>	1. Incident Name Worthington Fire	Date Prepared 8/8/2020	Time Prepared 20:30
2. Operational Period (Date and Time) 8/9/2020 0600-2000			
3. Objective(s):			
Maintain firefighter and public safety as the highest priority by assuring briefings and implementing mitigation measures to identified risks.			
Maintain COVID-19 mitigation procedures and follow established protocols to the extent feasible in order to minimize exposure and transmission to fire firefighters and communities.			
Maintain and build positive relationships with impacted landowners, utilities, public, and cooperating agencies.			
Utilize the incident repair plan to safely and effectively complete repair objectives. Maintain strategic awareness on repair objectives between BLM and Private Lands. Identify any additional incident repair needs and report to the Resource Advisors.			
Restrict unnecessary/undesired motorized vehicle access on any roads or firelines created by fire suppression activities.			
Protect tribal, cultural, archeological, and sensitive plant sites by coordinating with Resource Advisors.			
Provide for initial attack resources in coordination with southwest Oregon needs.			
4. Operational Period Command Emphasis:			
Ensure repair objectives are clear and understood. Utilize the repair plan to identify repair needs and apply the appropriate tactics to complete the tasks. Work with the divisional READs/REAFs for the inspection of completed tasks.			
7. General Situation Awareness:			
See spot weather forecast.			
8. Attachments (check if attached)			
<input checked="" type="checkbox"/> Organization List (ICS 203)	<input checked="" type="checkbox"/> Medical Plan (ICS 206)	<input checked="" type="checkbox"/> medical 8 line	
<input checked="" type="checkbox"/> Assignment List (ICS 204)	<input checked="" type="checkbox"/> Incident Map	<input checked="" type="checkbox"/> safety message	
<input checked="" type="checkbox"/> Communications Plan (ICS 205)	<input type="checkbox"/> Traffic Plan	<input type="checkbox"/> _____	
ICS-202	9. Prepared by (PSC) <i>Ruth Johnson</i>	10. Approved by (IC) <i>Mike McCann</i>	

ORGANIZATION ASSIGNMENT LIST			9. Operations Section	
1. Incident Name	Worthington Fire		Chief (day)	O-91 Trevor Wallace (LWD 8/15)
2. Date	8/8/20	3. Time	20:30	Chief
4. Operational Period	8/9/20	0600-2000		
<b>5. Incident Commander and Staff</b>			<b>a. Branch I - Division/Groups</b>	
Incident Commander	O-135 Mike McCann (LWD 8/14)		Division/Group A	O-98 Linda Gibson (LWD 8/10)
	O-92 Jesse Kiene (T) (LWD 8/14)		Division/Group E	O-95 Eric Siemer (LWD 8/15)
Safety Officer	O-123 Mike Hackett (8/20)		Division/Group P	O-80 Toby White (LWD 8/16)
	O-86 Roger Beck (LWD 8/14)		Division/Group	
Information Officer	O-61 Don Ferguson (LWD 8/14)		Division/Group	
	O-64 Joel Brumm (T) (LWD 8/15)		<b>b. Branch II - Division/Groups</b>	
		Division/Group		
		Division/Group		
<b>6. Agency Representative</b>			Division/Group	
Agency	Name		Division/Group	
BLM	Jen Sanborn		Division/Group	
ODF	Dave Larson		<b>c. Branch III - Division/Groups</b>	
Lead READ	O-93 Colby Hawkinson (LWD 8/15)		Division/Group	
			Division/Group	
			Division/Group	
			Division/Group	
<b>7. Planning Section</b>			<b>d. Branch IV Division/Groups</b>	
Chief	O-134 Ruth Johnson (LWD 8/15)		Duty Officer	
	O-88 Mike Crawford (T) (LWD 8/14)		Division/Group	
Resource Unit			Division/Group	
Situation Unit			Division/Group	
Documentation Unit			Division/Group	
Demobilization Unit			<b>e. Air Operations Branch</b>	
Technical Specialists			Air Operations	
			Air Tactical Group Supervisor	
			Air Support Group Supervisor	
<b>8. Logistics Section</b>			<b>10. Finance Section</b>	
Chief	O-94 Cindy Wedekind (LWD 8/13)		Chief	O-117 Michelle Lane (LWD 8/14)
Deputy	O-76 John Houk (LWD 8/10)		Deputy	
Base Camp Manager	O-113 Tom Hawkins (LWD 8/16)		Time Unit	O-127 Lori Price (LWD 8/18)
Supply Unit			Cost Unit	O-89 Kathleen High (LWD 8/16)
Facilities Unit			Procurement Unit	
Ground Support Unit	O-102 Shane Stephens (LWD 8/17)		Incident Contract Project Insp	O-71 Tom Taylor (LWD 8/11)
Support Branch Dir.				
Medical Unit	O-59 Rodney Schmidt (LWD 8/17)			
Security	O-68 Bobby Semblante (LWD 8/9)		Prepared by (Resource Unit Leader)	
			<i>Ruth Johnson</i>	

# Worthington Fire National Weather Service Medford 2020-08-09 3:58 PM PDT

Spot Forecast for Worthington Fire...BLM

National Weather Service Medford OR

358 PM PDT Sun Aug 9 2020

Forecast is based on forecast start time of 0600 PDT on August 10. If conditions become unrepresentative...contact the National Weather Service.

## .DISCUSSION...

It will be very hot and seasonably dry Monday with east winds becoming slope driven before becoming northwest and increasing in the afternoon to early evening. Winds will diminish and become light from an easterly direction Monday with moderate RH recovery on the ridges. Tuesday it will be notably cooler, but also a little drier and with gusty afternoon and evening winds from the northwest.

## .MONDAY...

Sky/weather.....Sunny.

Max temperature.....95-100.

Min humidity.....16-18%.

Eye level winds.....ESE 1-3 mph becoming upslope 0-2 mph late morning, then becoming NW 1-3 mph with gusts 3-5 mph in the afternoon.

Wind (20 ft).....ESE 5-10 mph becoming light and variable late morning, then becoming NW 5-10 mph with gusts 10-15 mph during the afternoon.

CWR.....0 percent.

LAL.....1.

Mixing height.....Less than 500 ft AGL early, increasing to 1500-3000 ft agl late morning, the increasing further to 7000-8500 ft AGL late afternoon.

Mixing winds.....ESE 7 mph until late morning, becoming light and variable, then NW 10 mph during the afternoon.

## .MONDAY NIGHT...

Sky/weather.....Clear.

Min temperature.....55 bottom to 60 top.

Max humidity.....80% bottom to 60% top.

Eye level winds.....NW 1-3 mph with gusts 3-5 mph early evening, becoming NE 0-2 mph, then becoming SE 0-2 mph around sunrise.

Wind (20 ft).....NW 5-10 mph with gusts 10-15 mph early evening, becoming NE 5 mph, then becoming SE 5 mph around sunrise.

CWR.....0 percent.

LAL.....1.

Mixing height.....7500 ft AGL early evening, decreasing to 500 ft AGL or less mid-late evening.

Mixing winds.....NW 12 mph early evening, then becoming NE 5 mph, then SE 5 mph around sunrise.

## .TUESDAY...

Sky/weather.....Sunny.

Max temperature.....86-91.

Min humidity.....14-17 percent.

Eye level winds.....Light and variable, then becoming NW 1-3 mph with gusts 5-7 mph in the afternoon.

Wind (20 ft).....Light and variable, then becoming NW 5-10 mph with gusts 15-20 mph in the afternoon.

CWR.....0 percent.

LAL.....1.

Mixing height.....500 ft AGL increasing to 3000 ft AGL late morning, then increasing to 6000-7000 ft AGL in the afternoon.

Mixing winds.....Northwest around 4 mph.

Forecaster...LUTZ

<b>DIVISION ASSIGNMENT LIST</b>		1. Branch	2. Division Group <b>A</b>	
3. Incident Name <b>Worthington Fire</b>		4. Operational Period <b>8/9/20 0600-2000</b>		
5. <b>Operations Personnel</b>				
Operations Chief	<b>O-91 Trevor Wallace</b>	Division/Group Supervisor	<b>O-98 Linda Gibson (LWD 8/10)</b>	
Branch Director		Air Attack Supervisor		
6. <b>Resources Assigned This Period</b>				
Strike Team / Task Force / Resource Designator		Leader	Number persons	LWD
C-9 HC2IA	BLM Crew 10	Justin Livdahl	21	8/13
E-66 EXCA	General Excavating	Joe Berklich	2	8/21
O-20 FMOD	Wapati	Dan Fyfert	2	8/13
REAF		Leo Engleson	1	
7. Control Operations				
Safely and efficiently conduct repair work on Meadow drop point. Waterbar and repair dozer line.				
8. Special Instructions				
9. <b>Division/Group Communications Summary</b>				
Function	Frequency – RX / tone	Frequency – TX / tone	Channel	Channel Name
Command				
Tactical Div/Group	see communications plan			
Air to Ground				
Prepared by (Resource Unit Leader)	Approved by (Planning Section Chief)		Date Prepared	Time
	<i>Ruth Johnson</i>		8/8/2020	20:30

<b>DIVISION ASSIGNMENT LIST</b>		1. Branch	2. Division Group <b>E</b>	
3. Incident Name	<b>Worthington Fire</b>		4. Operational Period	<b>8/9/20 0600-2000</b>
5. <b>Operations Personnel</b>				
Operations Chief	<b>O-91 Trevor Wallace</b>		Division/Group Supervisor	<b>O-95 Eric Siemer (LWD 8/15)</b>
Branch Director			Air Attack Supervisor	
6. <b>Resources Assigned This Period</b>				
Strike Team / Task Force / Resource Designator		Leader		Number persons
LWD				
C-16 HC2	Ponderosa Reforestation	Jose Contreros	20	8/13
C-25 HC2	Ge Forestry Inc	Gorgonio Ibarra	20	8/14
E-67 EXCA	Allied Water Services	Conor Wolfe	2	8/21
O-82 TFLD(T)		Collin O'Brien	1	8/15
O-137 REAF		Corey Parks	1	8/19
O-93 READ		Colby Hawkinson	1	8/15
O-104 REAF		Stacy Johnson	1	8/15
O-99 EMPF	EMPF	Kyle Meade	1	8/15
7. Control Operations				
Safely and efficiently conduct repair work on all interior lines.				
8. Special Instructions				
*Resource designated for initial attack contingency.				
9. <b>Division/Group Communications Summary</b>				
Function	Frequency – RX / tone	Frequency – TX / tone	Channel	Channel Name
Command				
Tactical Div/Group	see communications plan			
Air to Ground				
Prepared by (Resource Unit Leader)		Approved by (Planning Section Chief)		Date Prepared
		<i>Ruth Johnson</i>		8/8/2020
				Time
				20:30

<b>DIVISION ASSIGNMENT LIST</b>		1. Branch	2. Division Group <b>P</b>	
3. Incident Name <b>Worthington Fire</b>		4. Operational Period <b>8/9/20 0600-2000</b>		
<b>5. Operations Personnel</b>				
Operations Chief	<b>O-91 Trevor Wallace</b>		Division/Group Supervisor	<b>O-80 Toby White (LWD 8/16)</b>
Branch Director			Air Attack Supervisor	
<b>6. Resources Assigned This Period</b>				
Strike Team / Task Force / Resource Designator		Leader	Number persons	LWD
C-18 HC2	North Pacific Forestry	Jose Cicisneros	20	8/13
C-20 HC2	North Pacific Forestry	Jose Perez	20	8/13
E-5 ENG6	JCCJ	Levi Caster	5	8/13
*E-32 DOZ	Applegate Excavation	Sebastian	2	8/13
E-68 EXCA	Pacific Ridgeline	Martin Miller	2	8/21
*E-44 WT	Rogue Basin Fire Service	Matt Jordan	1	8/14
O-106 REAF		Aaron Worman	1	8/15
O-100 EMPF	Wilderness Medic	Ashley Short	1	8/16
<b>7. Control Operations</b>				
Safely and efficiently conduct repair work on all interior and secondary lines.				
<b>8. Special Instructions</b>				
*Resource designated for initial attack contingency.				
<b>9. Division/Group Communications Summary</b>				
Function	Frequency – RX / tone	Frequency – TX / tone	Channel	Channel Name
Command				
Tactical Div/Group	see communications plan			
Air to Ground				
Prepared by (Resource Unit Leader)		Approved by (Planning Section Chief)		Date Prepared   Time
		<i>Ruth Johnson</i>		8/8/2020   20:30

# AIR OPERATIONS SUMMARY

Prepared By: Mike DeMello

Prepared Date: 08/05/20

Prepared Time: 1200

<b>1. INCIDENT NAME:</b> Worthington Fire	<b>2. OPS PERIOD DATE:</b> 08/10/20	<b>START TIME:</b> 0800	<b>END TIME:</b> 2000	<b>SUNRISE:</b> 0608	<b>SUNSET:</b> 2025
<b>3. REMARKS (Safety Notes, Hazards, and Air Operations Special Equipment, etc.):</b>  HIGH HOT HEAVY CONDITIONS, SMOKE, HIGH WINDS, TURBULENCE. FOLLOW WIND LIMITATION PROTOCOLS WHEN CONDUCTING AIR OPERATIONS. PLEASE CHECK NOTAMS  Please Send all Aircraft costs to orrvcc@firenet.gov			<b>4. READY ALERT AIRCRAFT</b>  MEDEVAC: Any Available		<b>5. TFR #:</b> Worthington Fire N42 29.02 W122 42.82 3M Radius 7,000msl

6. PERSONNEL	NAME	PHONE #	7. FREQUENCIES	AM	FM	8. FIXED-WING- Type/ Make-Model/ N#/ Base
UAO	Mike DeMello	541/ 324-0876	A/A Primary	127.000		AIRTANKERS --- Order through RVICC
Medford ATB	Justin Bohannan	479/ 200-0818	Air to Ground	167.0750	167.0750	LEAD PLANES -- Order through RVICC
Medford VLAT	Bo Bohannan	479/ 981-9123	National FF	168.650 R+ 110.9	168.650 T+ 110.9	AERIAL SUPERVISION - Order through RVICC
Fixed Wing-ATGS	Contact RVICC for Availability		Local FF	166.7875 R+ 67.0	166.7875 T+ 67.0	Tanker Base Main Line —541/ 779-0397
Siskiyou Helibase Manager	Matt Schutty	406/ 360-3758	Air Guard	168.625	168.625 T+ 110.9	
2WM Manager	Alex Voshell	208/ 602-9602				
8AC Manager	Corey Favorite	530/ 867-4711	Medford Tanker Base	123.975		

## 9. HELICOPTERS

FAA N#	TY	MAKE/ MODEL	BASE	START	AVAIL	REMARKS	FAA N#	TY	MAKE/ MODEL	BASE	START	AVAIL	REMARKS
N178AC	1	S-64	KMFR	0800	0900	Contact RVICC for Availability	AA-305	1	AC-90	KMFR	0800	0900	Contact RVICC for Availability
N202WM	2	KMAX	K3S8	0800	0900	Contact RVICC for Availability	AA-610	1	AC-90	KMFR	0800	0900	Contact RVICC for Availability
S260		CL415	KEUG	0800	0900	Contact RVICC for Availability	N28HX	2	Bell 205++	KMFR	0800	0900	Contact RVICC for Availability
S263		CL415	KEUG	0800	0900	Contact RVICC for Availability							



<b>10. TASK/ MISSION/ ASSIGNMENT (Type/ function includes: Air Tactical, Retardant, Recon, Personnel Transport, Bucket Operations, SAR, etc.)</b>				
<b>TYPE/FUNCTION</b>	<b>NAME OF PERSONNEL OR CARGO (If applicable) or instructions for tactical aircraft</b>	<b>MISSION START</b>	<b>FLY FROM</b>	<b>FLY TO</b>
Recon	As Requested	As Requested	Any Location	Fire
Bucket Support	As Requested	As Requested	Any Location	Fire
Troop Transport	As Requested	As Requested	Any Location	Fire
Aerial Supervision	As Requested	As Requested	Medford or Ashland	Fire
UAS	As Requested	As Requested	Any Location	Fire
Supply Missions	As Requested	As Requested	Any Location	Fire

**NOTES: Please advise RVICC if any planned UAS Flights are going to be conducted either day or night, so we can de-conflict with all the units including the Medford Airport Tower.**

***Worthington Fire  
August 10, 2020  
Safety Message  
Major Hazards and Risks:***

**S**cout out parking, break, and work areas and safety zones

**A**dvice co-workers of known hazards.

**F**ace your hazard and take appropriate action.

**E**xamine work area for other hazards.

**T**ake extra caution around heavy equipment.

**Y**ou are ultimately responsible for your own safety.

**Symptoms & Signs of Heat Illness**

**Heat Exhaustion:** Victim will have cool, clammy skin; pale coloring; feel weak, dizzy and/or nauseous.

Treatment – Have individual sit in shade or cool area; administer fluids; loosen clothing and assure rest.

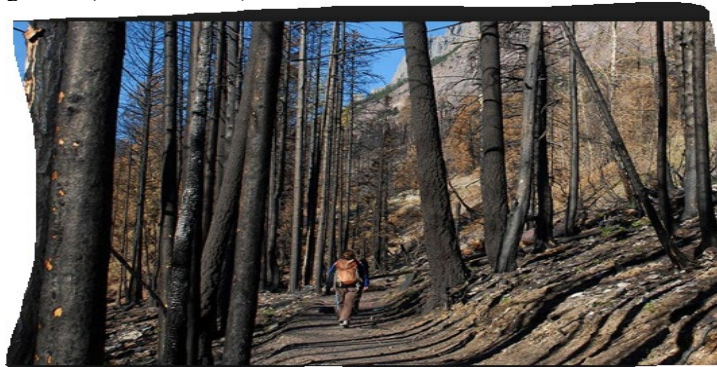
**Heat Stroke: This is a medical emergency!!**

Victim will be hot, dry, with red skin and possible convulsions. These symptoms can progress to unconsciousness and death!

Treatment – Immediately cool individual's body by pouring water over them, especially the head and upper body. Contact the medical unit. Monitor the victim and provide whatever medical support necessary. Placing ice around the neck and armpits can help speed the cool down.

**During Hot Weather**

To protect your health when temperatures are extremely high, remember to keep cool and use common sense. The following tip is important. Drink Plenty of Fluid Increase your fluid intake - regardless of your activity level. During heavy exercise in a hot environment, drink 2-4 glasses (16-32 ounces) of cool fluids each hour.



Safety Officer: *Mike Hackett*

INCIDENT RADIO COMMUNICATIONS PLAN			Incident Name <b>Worthington Fire</b>			Date/Time Prepared 8/4/2020 1800		Operational Period Date/Time 8/10/2020		
Only frequencies listed on this 205 are authorized for use on this incident.										
Ch #	Function	Channel Name/Trunked Radio System Talk-group	Assignment	RX Freq N or W	RX Tone	TX Freq N or W	Tx Tone	Mode	Remarks	
1N	TACTICAL	TAC 1	DIVISION: A	168.2000 N	110.9	168.2000 N	110.9	A	Division Tac	
2N	TACTICAL	TAC 2	DIVISION: E	166.7250 N	110.9	166.7250 N	110.9	A	Division Tac	
3N	TACTICAL	TAC 3	DIVISION:P	168.2500 N	110.9	168.2500 N	110.9	A	Division Tac	
4N	TACTICAL	TAC 4	DIVISION: Unassigned	166.7750 N	110.9	166.7750 N	110.9	A	Unassigned	
5N	COMMAND	BLM FLOUNCE	All Branches	172.4500 N	None	166.3500 N	100.0	A	Command to ICP <b>talks to RVICC dispatch</b>	
6N	COMMAND	USFS Rustler High Cascades	All Branches	169.5750 N	67.0	164.8750 N	79.7	A	Command to ICP <b>talks to RVICC dispatch</b>	
7N	COMMAND	USFS Robinson High Cascades	All Branches	169.5750 N	67.0	164.8750 N	91.5	A	Command to ICP <b>talks to RVICC dispatch</b>	
8N	COMMAND	USFS Dutchman Siskiyou Mtns	All Branches	169.9750 N	67.0	164.9375 N	118.8	A	Command to ICP <b>talks to RVICC dispatch</b>	
9N	TACTICAL	RSF TAC	USFS TAC	167.4250 N	67.0	167.4250 N	67.0	A	Forest Tac	
10N	AIR to GROUND	A/G 1	Worthington Secondary	167.0750 N	None	167.0750 N	None	A	For Aircraft contact	
11N	ODF FLOUNCE	RPTR	ODF FLOUNCE	151.1750 N	None	159.4125	173.8	A	MEFORD ODF State RPTR	
12N	ODF ROXY	RPTR	ODF ROXY	151.1750 N	None	159.4125	179.9	A	MEFORD ODF State RPTR	
13N	ODF RED	ODF RED	ODF RED TAC	151.3400 N	None	151.3400 N	156.7	A	MEFORD ODF State TAC	
14N	ODF WHITE	ODF WHITE	ODF WHITE TAC	151.3100 N	None	151.3100 N	156.7	A	MEFORD ODF State TAC	
15N	TACTICAL	RV TAC 2	CNTY TAC	159.2400 N	156.7	159.2400 N	156.7	A	CNTY tactical	
16N	EMERGENCY	AIRGUARD	All Divisions	168.6250 N		168.6250 N	110.9	A	Urgent Aircraft Contact (16CH.HT)	
5. Prepared by Dennis Brigante, COML				Incident Location Fire Latitude                      Longitude						

The convention calls for frequency lists to show four digits after the decimal place, followed by either an “N” or a “W” depending on whether the frequency is narrow or wide band.

**Make Sure Squelch Knob is turned all the way to the left, so it clicks. This is to activate the RX tone Guard. Or you will hear all radio traffic from all areas.**

## Worthington Fire SWO IMT3 Phone List

Name	Position	Cell
Brumm, Joel	Public Information	541-200-4485
Crawford, Mike	Plans (T)	458-212-0501
Ferguson, Don	Public Information	541-778-2679
Hackett, Mike	Safety	541-531-7081
Hawkinson, Colby	Lead READ	541-727-8437
Houk, John	Deputy Logistics	775-815-8577
<b>Jesse Kiene</b>	<b>IC (T)</b>	<b>541-531-5568</b>
Johnson, Ruth	Plans	541-591-0920
Johnson, Stacy	READ (T)	541-201-3119
Knighton, Lynda	Ordering	541-821-7119
Lane, Michelle	Finance	801-682-6717
<b>McCann, Mike</b>	<b>IC</b>	<b>530-249-1694</b>
Stephens, Shane	Ground Support	541-890-5540
Wallace, Trevor	Operations	541-450-1133
Wedekind, Cindy	Logistics	541-450-1136
	Demob/check-in	541816-0454
	RVICC	541-618-2510
	Expanded - Leslie	541-618-2177
	Expanded - Mary	541-618-2162

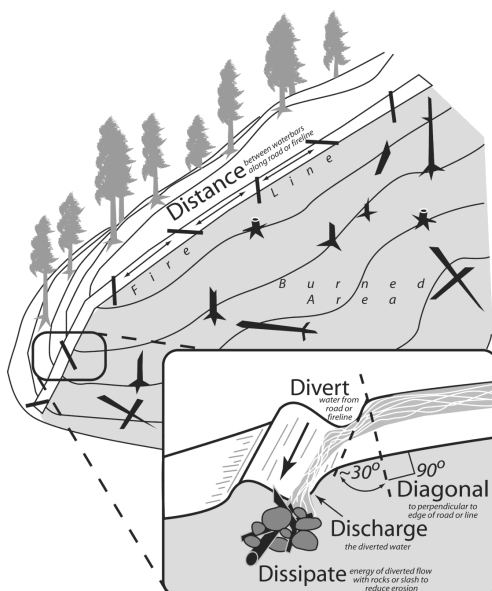
## Mop-up Standards for BLM Lands – Worthington Fire, Medford District BLM

The intent of mop up is to make the likelihood of the fire escaping the containment perimeter very unlikely through the rest of the fire season or onset of significant rains. Mop up will be implemented to the degree and location necessary to meet the above intent.

- The Bureau of Land Management's approach to mop-up, in order to minimize unnecessary exposure to firefighters, is not to specify a distance or percentage "standard." There may be parts of the fire that are too dangerous for *any* mop-up (e.g., snag patches, extremely steep/rocky terrain).
- To reduce hazards during mop-up, fall intermittent snags that pose "imminent" danger to firefighters (ref. **Field Guide for Danger Tree Identification and Response**, RG-NR-FP-PR-01-08). Avoid bucking of logs when possible in an effort to keep whole trees in long segments. This fire is extremely rocky in places. Watch for rock and log roll out.
- Spot fires outside the control lines will be mopped up commensurate with exposure and values. The perimeter of spots will be mapped in GIS.
- Mop-up of partially burned areas further inside the lines **will be the exception** and determined on a case-by-case basis by the READ, Safety Officer and Operations depending on the specific values at risk.
- As mop-up specifications are met on a Division, Operations will develop a plan for the resources and equipment to be left in place that may be required for future contingency actions.
- Use the water bar spacing guide along with the diagram and specification below for proper water bar installation.

**Water Bar Guidelines (Hand and Dozer Lines)**

Fire Line Slope %	Maximum Water Bar Spacing (feet)
2-5	300
6-10	200
11-15	150
16-20	100
21-35	75
36+	50



- a. Cut in the water bar – do not simply push up loose soil.
- b. Water bars should direct runoff AWAY FROM the burned area where possible.

## Plans

Fillable forms – time and performance evaluations (click the link, or scan the code): [fillable forms](#)



Adobe Reader DC on your mobile device is required to use fillable PDF forms. Must have adobe reader on your smart device in order to utilize.

Adobe Reader is free and available here: <https://get.adobe.com/reader/>

---

## Demob

1. **Ground Support:** Complete vehicle inspection if not selecting “no damages/no claim” in box 11 on the OF-296 (contractors).
2. **Weed wash:** Complete weed wash, they will ask for your resource order number and let demob know when you have completed.
3. **Communications:** Return radios you have checked out to security at the front door.
4. **Finance:** Close out time with finance.
5. **Plans:**
  - a. Performance evaluations: Available in forms (above). Please complete (if applicable) and email to [2020.worthington.plans@firenet.gov](mailto:2020.worthington.plans@firenet.gov). In the subject line, please include your resource number (example: E-12 performance)
  - b. Send any unit logs or other documentation (if applicable) to [2020.worthington.plans@firenet.gov](mailto:2020.worthington.plans@firenet.gov) with your resource number in the subject line.
  - c. **Call demob 541-816-0454 to finalize you check out.** You will not be officially released from the incident until you call.

08/10/2020

TENTATIVE RELEASE

WORTHINGTON US-OR-MED-000243

**CREWS**

C-16            1800                            (HC2)            17162 - PONDEROSA

**EQUIPMENT**

E-32            1700                            (DOZ2)            (ODF) APPLGATE EXCAVATION

**OVERHEAD**

O-124           0700                            (DIVS)            ROBINSON, NATHAN  
O-122           0900                            (ORDM)            HANSON, MICHAEL D  
O-20            1730                            (FAL1)            WAPITI FORESTRY

08/11/2020

TENTATIVE RELEASE

WORTHINGTON US-OR-MED-000243

**OVERHEAD**

O-64            1800                            (PIO2)            BRUMM, JOEL N  
O-61            1800                            (PIO1)            FERGUSON, DONALD  
O-63            1800                            (PIO2)            YORK, PATRICIA L  
O-65            1900                            (RCDM)            HAUCK, BENJAMIN  
O-73            2000                            (ITSS)            DZIALOWY, PAUL J  
O-66            2000                            (ORDM)            KNIGHTON, LYNDA  
O-115           2000                            (SEC2)            LANG, KEITH A  
O-59            2000                            (MEDL)            SCHMIDT, RODNEY  
O-114           2000                            (SEC2)            THWEATT, JAMES B  
O-88            2100                            (PSC3)            CRAWFORD, MICHAEL W  
O-76            2100                            (LSC3)            HOUK, JOHN E  
O-134           2130                            (PSC3)            JOHNSON, RUTH M

08/09/2020

21:48:52

Revision Date: 12/19/2011

**08/12/2020**

**TENTATIVE RELEASE**

**WORTHINGTON US-OR-MED-000243**

**CREWS**

**C-27            1200                            (CC)            BIFZ - CREW #1**

**EQUIPMENT**

**E-22            0800                            (SHW)            SHOWER - GRAYBACK FORESTRY**  
**E-50            0800                            (HNDW)            MISC - HANDWASHING STATION**  
**E-51            0800                            (HNDW)            MISC - HANDWASHING STATION**  
**E-60            0900                            (GWT2)            GRAY WATER TRUCK - T2 -**  
**E-58            1200                            (WEED)            MISC - WEED WASHING UNIT -**  
**E-63            1200                            (STK)            OR-RSF AOV 5191**

**OVERHEAD**

**O-130           1200                            (DRIV)            BEEMER, SCOT**  
**O-113           1200                            (BCMG)            HAWKINS, THOMAS P**  
**O-131           1200                            (DRIV)            REBURN, CHERY L**  
**O-102           1200                            (GSUL)            STEPHENS, JOSEPH S**



## ACTIVITY LOG (ICS 214)

<b>1. Incident Name:</b>	<b>2. Operational Period:</b> Date From: _____ Date To: _____ Time From: _____ Time To: _____
--------------------------	--

<b>3. Name:</b>	<b>4. ICS Position:</b>	<b>5. Home Agency (and Unit):</b>
-----------------	-------------------------	-----------------------------------

6. Resources Assigned:		
Name	ICS Position	Home Agency (and Unit)

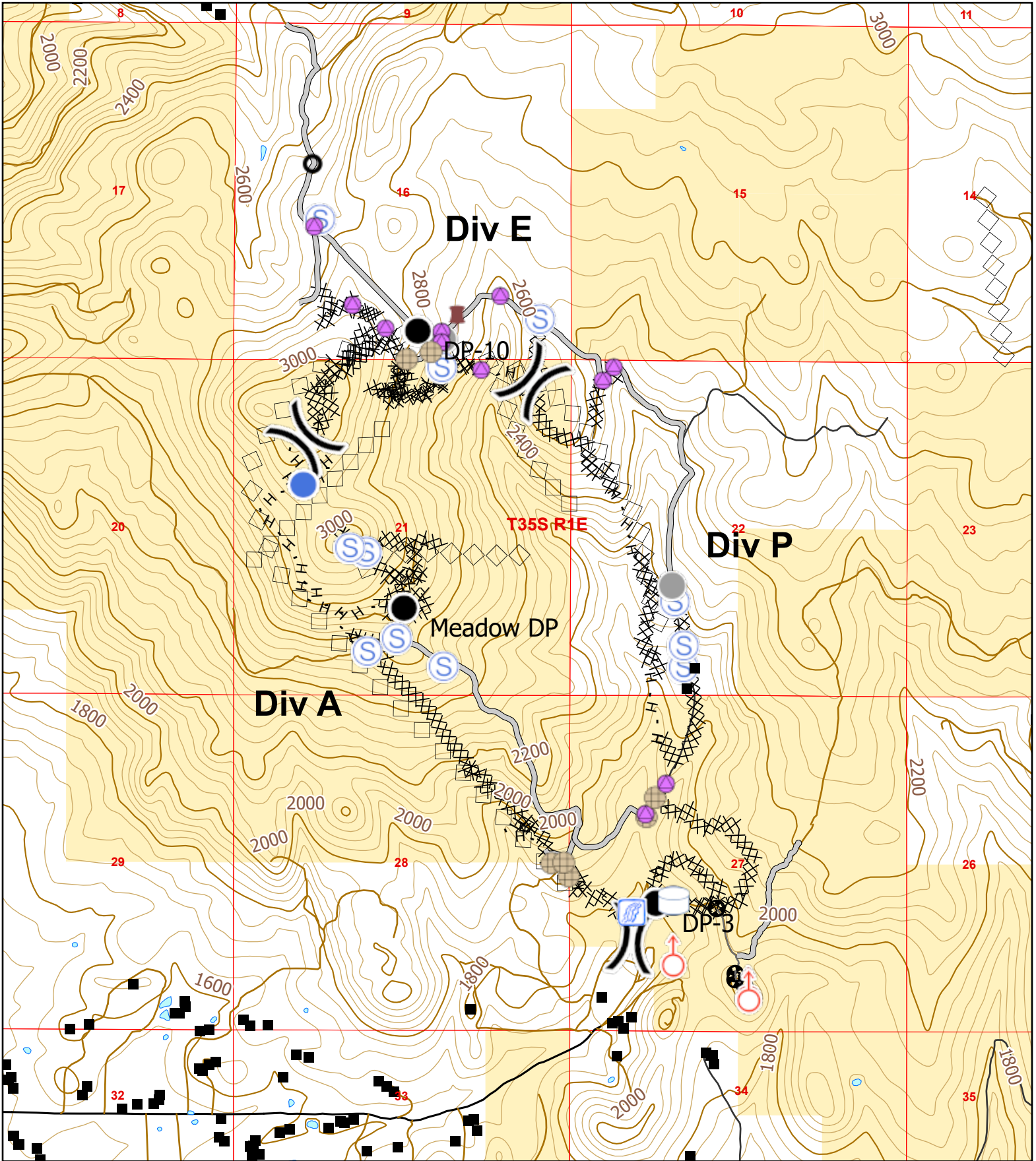
7. Activity Log:	
Date/Time	Notable Activities

<b>8. Prepared by:</b> Name: _____	Position/Title: _____	Signature: _____
<b>ICS 214, Page 1</b>	Date/Time: _____	

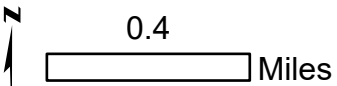


# Worthington

Aug 9, 2020



Perimeter as of 8/3/20 @ 1800 hrs



Map Scale: 1:24,000  
ODF GIS: August 09, 2020, 1601 hrs

- |   |                       |                   |                           |
|---|-----------------------|-------------------|---------------------------|
| — Paved Road                              | ⊕ Pump                | ● Helispot        | ⊗ Completed Dozer Line    |
| — All-Weather Road                        | ⊕ Water Tank          | ● Repair Point    | H Completed Hand Line     |
| — Dirt Road                               | ⊕ Culvert             | ⊕ Spot Fire       | R Road as Completed Line  |
| ■ United States Bureau of Land Management | ● Drop Point          | ⊕ Staging Area    | — Access or Improved Road |
| ■ Structures                              | ⊕ Dozer Push          | ⊕ Stream Crossing | ⊕ Aerial Retardant Drop   |
| ■ Waterbodies                             | ⊕ Fence - Cut/Damaged | ⊕ Other           | ⊕ Air Tanker Retardant    |
|   |                       | ⊕ Division Break  | ⊕ Other                   |

Download Maps Here



# MEDICAL PLAN (ICS 206 WF)

<b>1. Incident/Project Name</b>				<b>2. Shift</b>						
<b>Worthington Fire</b>				Date/Time	8/10/2020	Day Shift				
<b>3. Ambulance Services</b>										
Name	Location			Phone & EMS Frequency		Advanced Life Support (ALS) Yes      No				
Mercy Flight Ground	2020 Milligan Way, Medford, OR			541-779-6551 (911)		X				
Jackson County 911				911						
<b>4. Air Ambulance Services</b>										
Name	Phone			Type of Aircraft & Capability						
Mercy Flights Air	541-779-6551			Mercy 105 Bell 407 No Hoist Contact Rogue Dispatch to order a Medivac						
Jackson County 911	911									
<b>5. Hospitals</b>										
Name & Level	GPS Datum – WGS 84 Degrees Decimal Minutes			Travel Time Air      Gnd		Phone		Helipad Yes      No		Address
Rogue Valley Medical Center <b>Trauma Yes Level 2</b>	Lat:	N42°19.07'		30 min	45 min	541-789-7000	X		2825 E. Barnett Road Medford, OR	
	Long:	W122° 49.90'								
	VHF:									
Providence Medical Center <b>Trauma Yes Level 2</b>	Lat:	N42°20.33'		30 min	45 min	541-732-5000	X		1111 Crater Lake Ave. Medford, OR	
	Long:	W122° 51.77'								
	VHF:									
Legacy Emanuel Hospital <b>Trauma Yes Level 1</b>	Lat:	N45° 32.66'		2 Hr	4 Hr	503-413-2200	X		2801 Gantenbein Ave. Portland, OR	
	Long:	W122° 40.18'								
	VHF:									
	Lat:									
	Long:									
	VHF:									
<b>6. Division / Crew Pre-plan. Update daily</b>										
<b>Mercy Flight Ambulance parked at DP 3 DIV Break between A/P</b>										
A	Heli Spot DIV Break between A/P Lat. N42°29.795' / Long. W122° 41.582'									
	Heli Spot Meadow DP Lat. N42°30.563' / Long. W122° 42.460'									
E	Heli Spot Lat. N42°31.298' / Long. W122° 42.292'									
P	Heli Spot Lat. N42°30.620' / Long. W122° 41.610'									
<b>7. Medical Personnel</b>										
<b>Staged by DIVS</b>										
Div P: Ashley Short EMPF					ALS Equipment, Long board, AED					
Div E: Kyle Meade EMPF					ALS Equipment, Long board, AED					
ICP: Rod Schmidt EMPF/MEDL					ALS Equipment					
<p><b>In an EMERGENCY contact Rouge Valley Dispatch on Channel 5 (BLM Flounce), Channel 6 (USFS Rustler), or call 541.618.2510.</b></p> <p><b>After hours Central Dispatch will answer the radio or call 911.</b></p>										
<b>8. Prepared By (Medical Unit Leader)</b>				<b>9. Date/Time</b>		<b>10. Reviewed By (Safety Officer)</b>			<b>11. Date/Time</b>	
/S/ Rodney Schmidt MEDL/EMPF 406.261.9541				8/9/2020 19:00		/S/ Michael Hackett			8/9/2020 19:00	

# MEDICAL PLAN (ICS 206 WF)

## Medical Incident Report

### 1. CONTACT COMMUNICATIONS DECLARE: "MEDICAL EMERGENCY" OR "NON-EMERGENCY MEDICAL TRANSPORT"

*Ex: "Communications, Div. Alpha. Stand-by for a medical emergency on Div. Alpha" (If life threatening request designated frequency be cleared for emergency traffic.)*

### 2. INCIDENT STATUS:

Provide incident summary (including number of patients) and command structure. *Ex: "Communications, I have a Red priority patient, unconscious, struck by a falling tree. Requesting air ambulance to Forest Road 1 at (Lat. / Long.) This will be the Trout Meadow Medical, IC is TFLD Jones. EMT Smith is providing medical care."*

SEVERITY	TRANSPORT PRIORITY
<input type="checkbox"/> <b>URGENT-RED Life threatening injury or illness.</b> <i>Ex: Unconscious, difficulty breathing, bleeding severely, 2° – 3° burns more than 4 palm sizes, heat stroke, disoriented.</i>	Ambulance or MEDEVAC helicopter. Evacuation need is <b>IMMEDIATE.</b>
<input type="checkbox"/> <b>PRIORITY-YELLOW Serious Injury or illness.</b> <i>Ex: Significant trauma, not able to walk, 2° – 3° burns not more than 1-2 palm sizes.</i>	Ambulance or consider air transport if at remote location. Evacuation may be <b>DELAYED.</b>
<input type="checkbox"/> <b>ROUTINE-GREEN</b> Not a life threatening injury or illness. <i>Ex: Sprains, strains, minor heat-related illness.</i>	Non-Emergency. Evacuation considered <b>Routine of Convenience.</b>

<b>Nature of Injury or Illness &amp; Mechanism of Injury</b>		Brief Summary of Injury or Illness (Ex: Unconscious, Struck by Falling Tree)
<b>Transport Request</b>		Air Ambulance / Short-Haul/Hoist/ Ground Ambulance / Other
<b>Patient Location</b>		Descriptive Location & Lat. / Long. (WGS84)
<b>Incident Name</b>		Geographic Name + "Medical" (Ex: Trout Meadow Medical)
<b>On-Scene Incident Commander</b>		Name of on-scene IC of Incident within an Incident (Ex: TFLD Jones)
<b>Patient Care</b>		Name of Care Provider (Ex: EMT Smith)

### 3. INITIAL PATIENT ASSESSMENT: Complete this section for each patient. Start with most severe.

<b>Patient Assessment: (See IRPG page 106)</b>	<b>Treatment:</b>
--	-------------------

### 4. TRANSPORT PLAN:

**Evacuation Location** (if different): (Descriptive Location (drop point, intersection, etc.) or Lat. / Long.)

**Patient's ETA to Evacuation Location:**

**Helispot / Extraction Site Size and Hazards:**

### 5. ADDITIONAL RESOURCE/EQUIPMENT NEEDS:

- |  |  |                                      |  |                                 |
|--|--|--------------------------------------|--|---------------------------------|
| <input type="checkbox"/> Paramedic/EMT(s)                                  | <input type="checkbox"/> SKED/Backboard/C-Collar | <input type="checkbox"/> Crew(s)     | <input type="checkbox"/> Burn Supplies       | <input type="checkbox"/> Oxygen |
| <input type="checkbox"/> Trauma Bag  | <input type="checkbox"/> Medication(s)           | <input type="checkbox"/> IV/Fluid(s) | <input type="checkbox"/> Cardiac Monitor/AED |                                 |
| <input type="checkbox"/> Other (i.e. splints, rope rescue, wheeled litter) |  |                                      |  |                                 |

### 6. COMMUNICATIONS:

### 7. CONTINGENCY:

Considerations: If primary options fail, what actions can be implemented in conjunction with primary evacuation method? Be thinking ahead.

### 8. ADDITIONAL INFORMATION: Updates / Changes, etc.

**REMEMBER:** -Confirm ETA's of resources ordered -Act according to your level of training  
 - If air or ground ambulance is DELAYED: Package and transport patient to rendezvous with incoming Ambulance.  
 Re-route EMS helicopter to rendezvous point as appropriate.