



Worthington IAP



Worthington Maps

WORTHINGTON FIRE

Incident Action Plan

Tuesday 8/11/20 0600-2000

Medford District BLM and Southwest District ODF

OR-MED-000243

PD NCG5 (1502)



Southwest Oregon IMT3



Check in (first day only)

| | | | |
|--|---|--|------------------------|
| Incident Objectives | 1. Incident Name Worthington Fire | Date Prepared 8/10/2020 | Time Prepared 20:00 |
| 2. Operational Period (Date and Time) 8/11/2020 0600-2000 | | | |
| 3. Objective(s): | | | |
| Maintain firefighter and public safety as the highest priority by assuring briefings and implementing mitigation measures to identified risks. | | | |
| Maintain COVID-19 mitigation procedures and follow established protocols to the extent feasible in order to minimize exposure and transmission to fire firefighters and communities. | | | |
| Maintain and build positive relationships with impacted landowners, utilities, public, and cooperating agencies. | | | |
| Utilize the incident repair plan to safely and effectively complete repair objectives. Maintain strategic awareness on repair objectives between BLM and Private Lands. Identify any additional incident repair needs and report to the Resource Advisors. | | | |
| Restrict unnecessary/undesired motorized vehicle access on any roads or firelines created by fire suppression activities. | | | |
| Protect tribal, cultural, archeological, and sensitive plant sites by coordinating with Resource Advisors. | | | |
| Provide for initial attack resources in coordination with southwest Oregon needs. | | | |
| | | | |
| | | | |
| 4. Operational Period Command Emphasis: | | | |
| Ensure repair objectives are clear and understood. Utilize the repair plan to identify repair needs and apply the appropriate tactics to complete the tasks. Work with the divisional READs/REAFs for the inspection of completed tasks. | | | |
| 7. General Situation Awareness: | | | |
| See spot weather forecast. | | | |
| 8. Attachments (check if attached) | | | |
| <input checked="" type="checkbox"/> Organization List (ICS 203) <input checked="" type="checkbox"/> Medical Plan (ICS 206) <input checked="" type="checkbox"/> <u>medical 8 line</u> | | | |
| <input checked="" type="checkbox"/> Assignment List (ICS 204) <input checked="" type="checkbox"/> Incident Map <input checked="" type="checkbox"/> <u>safety message</u> | | | |
| <input checked="" type="checkbox"/> Communications Plan (ICS 205) <input type="checkbox"/> Traffic Plan <input type="checkbox"/> _____ | | | |
| ICS-202 | 9. Prepared by (PSC) <i>Ruth Johnson</i> | 10. Approved by (IC) <i>Mike McCann</i> | |

| ORGANIZATION ASSIGNMENT LIST | | | 9. Operations Section | |
|--|-----------------------------------|---------------|--|--------------------------------|
| 1. Incident Name | Worthington Fire | | Chief (day) | O-91 Trevor Wallace (LWD 8/15) |
| 2. Date | 8/10/20 | 3. Time 20:00 | Chief | |
| 4. Operational Period | 8/11/20 | 0600-2000 | a. Branch I - Division/Groups | |
| 5. Incident Commander and Staff | | | Division/Group A / P | O-80 Toby White (LWD 8/16) |
| Incident Commander | O-135 Mike McCann (LWD 8/14) | | Division/Group E | O-95 Eric Siemer (LWD 8/15) |
| | O-92 Jesse Kiene (T) (LWD 8/14) | | Division/Group | |
| Safety Officer | O-123 Mike Hackett (LWD 8/20) | | Division/Group | |
| | O-86 Roger Beck (LWD 8/14) | | Division/Group | |
| Information Officer | O-61 Don Ferguson (LWD 8/14) | | Division/Group | |
| | O-64 Joel Brumm (T) (LWD 8/15) | | b. Branch II - Division/Groups | |
| | | | Division/Group | |
| | | | Division/Group | |
| 6. Agency Representative | | | Division/Group | |
| Agency | Name | | Division/Group | |
| BLM | Jen Sanborn | | Division/Group | |
| ODF | Dave Larson | | c. Branch III - Division/Groups | |
| Lead READ | O-93 Colby Hawkinson (LWD 8/15) | | Division/Group | |
| | | | Division/Group | |
| | | | Division/Group | |
| | | | Division/Group | |
| 7. Planning Section | | | d. Branch IV Division/Groups | |
| Chief | O-134 Ruth Johnson (LWD 8/15) | | Duty Officer | |
| | O-88 Mike Crawford (T) (LWD 8/14) | | Division/Group | |
| Resource Unit | | | Division/Group | |
| Situation Unit | | | Division/Group | |
| Documentation Unit | | | Division/Group | |
| Demobilization Unit | | | e. Air Operations Branch | |
| Technical Specialists | | | Air Operations | |
| | | | Air Tactical Group Supervisor | |
| | | | Air Support Group Supervisor | |
| | | | | |
| 8. Logistics Section | | | 10. Finance Section | |
| Chief | O-94 Cindy Wedekind (LWD 8/13) | | Chief | O-117 Michelle Lane (LWD 8/14) |
| Deputy | O-76 John Houk (LWD 8/10) | | Deputy | |
| Base Camp Manager | O-113 Tom Hawkins (LWD 8/16) | | Time Unit | O-127 Lori Price (LWD 8/18) |
| Supply Unit | | | Cost Unit | O-89 Kathleen High (LWD 8/16) |
| Facilities Unit | | | Procurement Unit | |
| Ground Support Unit | O-102 Shane Stephens (LWD 8/17) | | Incident Contract Project Insp | O-71 Tom Taylor (LWD 8/11) |
| Support Branch Dir. | | | | |
| Medical Unit | O-59 Rodney Schmidt (LWD 8/17) | | | |
| Security | O-68 Bobby Semblante (LWD 8/9) | | Prepared by (Resource Unit Leader) | |
| | | | <i>Ruth Johnson</i> | |
| | | | | |

Worthington Fire
National Weather Service Medford
2020-08-10 4:09 PM PDT

Spot Forecast for Worthington Fire...BLM
National Weather Service Medford OR
409 PM PDT Mon Aug 10 2020

Forecast is based on forecast start time of 0600 PDT on August 11. If conditions become unrepresentative...contact the National Weather Service.

.DISCUSSION...

It will be cooler and a little more breezy from the northwest Tuesday afternoon and evening with continued seasonably dry conditions. Moderate RH recovery Tuesday night will be accompanied by light winds. Elevated partial cloud cover is expected Wednesday and it will not be as dry nor as breezy.

.TUESDAY...

Sky/weather.....Sunny.
Max temperature.....88-92.
Min humidity.....14-16%.
Eye level winds....Light and variable, then becoming NW 1-3 mph with gusts 5-7 mph in the afternoon.
Wind (20 ft).....Light and variable, then becoming NW 5-10 mph with gusts 15-20 mph in the afternoon.
CWR.....0 percent.
LAL.....1.
Mixing height.....500 ft AGL increasing to 3000 ft AGL late morning, then increasing to 6000-7000 ft AGL in the afternoon.
Mixing winds.....Light and variable in the morning, then increasing to NW 12 mph.

.TUESDAY NIGHT...

Sky/weather.....Clear.
Min temperature.....55-60.
Max humidity.....45-60 percent.
Eye level winds....NW 1-3 mph with gusts 3-5 mph in the early evening, then diminishing and becoming NE 0-2 mph.
Wind (20 ft).....Northwest 5-10 mph with gusts 10-15 mph early evening, then becoming NE 5 mph overnight.
CWR.....0 percent.
LAL.....1.
Mixing height.....6500 ft AGL decreasing to 500 ft AGL mid-late evening.
Mixing winds.....NW 12 mph becoming NE 5 mph overnight.

WEDNESDAY...

Sky/weather.....Partly Cloudy.
Max temperature.....79-83.
Min humidity.....20-25 percent.
Eye level winds....Light and variable early, then becoming upslope 0-2 mph, then becoming NW 1-3 mph with gusts 3-5 mph in the afternoon.
Wind (20 ft).....Light and variable, then becoming NW 5-10 mph with gusts 10-15 mph in the afternoon.
CWR.....0 percent.
CWR.....0 percent.
LAL.....1.
Mixing height.....500 ft AGL increasing to 2500 ft AGL late morning, then to 5500-7500 ft AGL during the afternoon.
Mixing winds.....Northwest 7 mph.

Forecaster...LUTZ

| | | | | |
|---|----------------------------|--|-----------------------------------|---------------|
| DIVISION ASSIGNMENT LIST | | 1. Branch | 2. Division Group A / P | |
| 3. Incident Name Worthington Fire | | 4. Operational Period 8/11/20 0600-2000 | | |
| 5. Operations Personnel | | | | |
| Operations Chief | O-91 Trevor Wallace | Division/Group Supervisor | O-80 Toby White (LWD 8/16) | |
| Branch Director | | Air Attack Supervisor | | |
| 6. Resources Assigned This Period | | | | |
| Strike Team / Task Force / Resource Designator | | Leader | Number persons | LWD |
| C-9 HC2IA | BLM Crew 10 | Justin Livdahl | 21 | 8/13 |
| C-20 HC2 | North Pacific Forestry | Jose Perez | 20 | 8/13 |
| E-4 ENG6 | JCCJ | Justin Lumpkin | 4 | 8/23 |
| E-5 ENG6 | JCCJ | Levi Caster | 4 | 8/13 |
| E-68 EXCA | Pacific Ridgeline | Martin Miller | 2 | 8/21 |
| E-44 WT | Rogue Basin Fire Service | Matt Jordan | 1 | 8/14 |
| O-100 EMPF | Wilderness Medic | Ashley Short | 1 | 8/16 |
| 7. Control Operations | | | | |
| Safely and efficiently conduct repair work on all interior and secondary lines. | | | | |
| 8. Special Instructions | | | | |
| Maintain availability for initial attack. | | | | |
| 9. Division/Group Communications Summary | | | | |
| Function | Frequency – RX / tone | Frequency – TX / tone | Channel | Channel Name |
| Command | | | | |
| Tactical Div/Group | see communications plan | | | |
| Air to Ground | | | | |
| Prepared by (Resource Unit Leader) | | Approved by (Planning Section Chief) | | Date Prepared |
| | | <i>Ruth Johnson</i> | | 8/10/2020 |
| | | | | Time |
| | | | | 20:00 |

| | | | | |
|---|----------------------------|--|----------------------------|------------------------------------|
| DIVISION ASSIGNMENT LIST | | 1. Branch | 2. Division Group E | |
| 3. Incident Name Worthington Fire | | 4. Operational Period 8/11/20 0600-2000 | | |
| 5. Operations Personnel | | | | |
| Operations Chief | O-91 Trevor Wallace | | Division/Group Supervisor | O-95 Eric Siemer (LWD 8/15) |
| Branch Director | | | Air Attack Supervisor | |
| 6. Resources Assigned This Period | | | | |
| Strike Team / Task Force / Resource Designator | | Leader | | Number persons |
| LWD | | | | |
| C-25 HC2 | Ge Forestry Inc | Gorgonio Ibarra | 20 | 8/14 |
| E-67 EXCA | Allied Water Services | Conor Wolfe | 2 | 8/21 |
| O-82 TFLD(T) | | Collin O'Brien | 1 | 8/15 |
| O-93 REAF | | Colby Hawkinson | 1 | 8/15 |
| O-104 REAF | | Stacy Johnson | 1 | 8/15 |
| REAF | | Evan Corrales | 1 | |
| REAF (T) | | Andrew Stevens (T) | 1 | |
| O-99 EMPF | EMPF | Kyle Meade | 1 | 8/15 |
| 7. Control Operations | | | | |
| Safely and efficiently conduct repair work on all interior lines. | | | | |
| 8. Special Instructions | | | | |
| Maintain availability for initial attack. | | | | |
| 9. Division/Group Communications Summary | | | | |
| Function | Frequency – RX / tone | Frequency – TX / tone | Channel | Channel Name |
| Command | | | | |
| Tactical Div/Group | see communications plan | | | |
| Air to Ground | | | | |
| Prepared by (Resource Unit Leader) | | Approved by (Planning Section Chief) | | Date Prepared |
| | | <i>Ruth Johnson</i> | | Time |
| | | | | 8/10/2020 |
| | | | | 20:00 |

AIR OPERATIONS SUMMARY

Prepared By: Mike DeMello

Prepared Date: 08/05/20

Prepared Time: 1200

| | | | | | |
|--|--|----------------------------|--|-------------------------|--|
| 1. INCIDENT NAME: Worthington Fire | 2. OPS PERIOD DATE: 08/10/20 | START TIME: 0800 | END TIME: 2000 | SUNRISE: 0608 | SUNSET: 2025 |
| 3. REMARKS (Safety Notes, Hazards, and Air Operations Special Equipment, etc.): HIGH HOT HEAVY CONDITIONS, SMOKE, HIGH WINDS, TURBULENCE. FOLLOW WIND LIMITATION PROTOCOLS WHEN CONDUCTING AIR OPERATIONS. PLEASE CHECK NOTAMS Please Send all Aircraft costs to orrvcc@firenet.gov | | | 4. READY ALERT AIRCRAFT MEDEVAC: Any Available | | 5. TFR #: Worthington Fire N42 29.02 W122 42.82 3M Radius 7,000msl |

| 6. PERSONNEL | NAME | PHONE # | 7. FREQUENCIES | AM | FM | 8. FIXED-WING- Type/ Make-Model/ N#/ Base |
|---------------------------|--------------------------------|---------------|---------------------|---------------------|---------------------|---|
| UAO | Mike DeMello | 541/ 324-0876 | A/A Primary | 127.000 | | AIRTANKERS --- Order through RVICC |
| Medford ATB | Justin Bohannon | 479/ 200-0818 | Air to Ground | 167.0750 | 167.0750 | LEAD PLANES -- Order through RVICC |
| Medford VLAT | Bo Bohannon | 479/ 981-9123 | National FF | 168.650 R+ 110.9 | 168.650 T+ 110.9 | AERIAL SUPERVISION - Order through RVICC |
| Fixed Wing- ATGS | Contact RVICC for Availability | | Local FF | 166.7875 R+ 67.0 | 166.7875 T+ 67.0 | Tanker Base Main Line —541/ 779-0397 |
| Siskiyou Helibase Manager | Matt Schutty | 406/ 360-3758 | Air Guard | 168.625 | 168.625 T+ 110.9 | |
| 2WM Manager | Alex Voshell | 208/ 602-9602 | | | | |
| 8AC Manager | Corey Favorite | 530/ 867-4711 | Medford Tanker Base | 123.975 | | |

9. HELICOPTERS

| FAA N# | TY | MAKE/ MODEL | BASE | START | AVAIL | REMARKS | FAA N# | TY | MAKE/ MODEL | BASE | START | AVAIL | REMARKS |
|--------|----|-------------|------|-------|-------|--------------------------------|--------|----|-------------|------|-------|-------|--------------------------------|
| N178AC | 1 | S-64 | KMFR | 0800 | 0900 | Contact RVICC for Availability | AA-305 | 1 | AC-90 | KMFR | 0800 | 0900 | Contact RVICC for Availability |
| N202WM | 2 | KMAX | K3S8 | 0800 | 0900 | Contact RVICC for Availability | AA-610 | 1 | AC-90 | KMFR | 0800 | 0900 | Contact RVICC for Availability |
| S260 | | CL415 | KEUG | 0800 | 0900 | Contact RVICC for Availability | N28HX | 2 | Bell 205++ | KMFR | 0800 | 0900 | Contact RVICC for Availability |
| S263 | | CL415 | KEUG | 0800 | | Contact RVICC for Availability | | | | | | | |

10. TASK/ MISSION/ ASSIGNMENT (Type/ function includes: Air Tactical, Retardant, Recon, Personnel Transport, Bucket Operations, SAR, etc.)

| TYPE/FUNCTION | NAME OF PERSONNEL OR CARGO (If applicable) or instructions for tactical aircraft | MISSION START | FLY FROM | FLY TO |
|--------------------|--|---------------|--------------------|--------|
| Recon | As Requested | As Requested | Any Location | Fire |
| Bucket Support | As Requested | As Requested | Any Location | Fire |
| Troop Transport | As Requested | As Requested | Any Location | Fire |
| Aerial Supervision | As Requested | As Requested | Medford or Ashland | Fire |
| UAS | As Requested | As Requested | Any Location | Fire |
| Supply Missions | As Requested | As Requested | Any Location | Fire |

NOTES: Please advise RVICC if any planned UAS Flights are going to be conducted⁷ either day or night, so we can de-conflict with all the units including the Medford Airport Tower.

Worthington Fire

August 11, 2020

Safety Message

Transfer of command

Risks to fire line personnel increase significantly during transfer of command periods regardless of the size or complexity of the incident. There is a high potential for fatalities, serious injuries, or incidents (some have occurred in the past). Be proactive in mitigating the risks by proper implementation of LCES—Lookout, Communications, Escape Routes, and Safety Zones.

Factors for increased risks to fire line personnel during transition periods include:

- No, or poor, briefing of incoming personnel.
- Lack of fire weather and behavior information, both forecast and observed.
- Communications; face-to-face briefings may not be possible and radio frequencies may be overextended and/or changing due to the increased demands on the system.
- Initial attack resources may not have checked-in and the Incident Commander may not be aware of the number, type and location of all resources.
- Location of safety zones and escape routes may not be known and communicated to all resources.

Not all Resources know who is in command.



Mitigation actions to take:

- Lookouts: Post and maintain your own lookouts.
- Communications: Maintain existing communications with your own and adjacent resources, as well as your original supervisor, while you are developing communications with incoming adjacent resources and your new supervisor.
- Escape routes and safety zones: Identify escape routes and assure incoming resources are aware of their locations; be aware that your original escape routes and safety zones may no longer be accessible due to changing fire behavior or your increased distance from them.
- Transition at the morning briefing.
- Utilize the Incident Response Pocket Guide transition checklist.

Safety Officer: *Mike Hackett*

| INCIDENT RADIO COMMUNICATIONS PLAN | | | Incident Name Worthington Fire | | | Date/Time Prepared 8/4/2020 1800 | | Operational Period Date/Time 8/11/2020 | | |
|--|---------------|--|--|--|---------|-------------------------------------|---------|---|---|--|
| Only frequencies listed on this 205 are authorized for use on this incident. | | | | | | | | | | |
| Ch # | Function | Channel Name/Trunked Radio System Talk-group | Assignment | RX Freq N or W | RX Tone | TX Freq N or W | Tx Tone | Mode | Remarks | |
| 1N | TACTICAL | TAC 1 | DIVISION: A | 168.2000 N | 110.9 | 168.2000 N | 110.9 | A | Division Tac | |
| 2N | TACTICAL | TAC 2 | DIVISION: E | 166.7250 N | 110.9 | 166.7250 N | 110.9 | A | Division Tac | |
| 3N | TACTICAL | TAC 3 | DIVISION:P | 168.2500 N | 110.9 | 168.2500 N | 110.9 | A | Division Tac | |
| 4N | TACTICAL | TAC 4 | DIVISION: Unassigned | 166.7750 N | 110.9 | 166.7750 N | 110.9 | A | Unassigned | |
| 5N | COMMAND | BLM FLOUNCE | All Branches | 172.4500 N | None | 166.3500 N | 100.0 | A | Command to ICP talks to RVICC dispatch | |
| 6N | COMMAND | USFS Rustler High Cascades | All Branches | 169.5750 N | 67.0 | 164.8750 N | 79.7 | A | Command to ICP talks to RVICC dispatch | |
| 7N | COMMAND | USFS Robinson High Cascades | All Branches | 169.5750 N | 67.0 | 164.8750 N | 91.5 | A | Command to ICP talks to RVICC dispatch | |
| 8N | COMMAND | USFS Dutchman Siskiyou Mtns | All Branches | 169.9750 N | 67.0 | 164.9375 N | 118.8 | A | Command to ICP talks to RVICC dispatch | |
| 9N | TACTICAL | RSF TAC | USFS TAC | 167.4250 N | 67.0 | 167.4250 N | 67.0 | A | Forest Tac | |
| 10N | AIR to GROUND | A/G 1 | Worthington Secondary | 167.0750 N | None | 167.0750 N | None | A | For Aircraft contact | |
| 11N | ODF FLOUNCE | RPTR | ODF FLOUNCE | 151.1750 N | None | 159.4125 | 173.8 | A | MEFORD ODF State RPTR | |
| 12N | ODF ROXY | RPTR | ODF ROXY | 151.1750 N | None | 159.4125 | 179.9 | A | MEFORD ODF State RPTR | |
| 13N | ODF RED | ODF RED | ODF RED TAC | 151.3400 N | None | 151.3400 N | 156.7 | A | MEFORD ODF State TAC | |
| 14N | ODF WHITE | ODF WHITE | ODF WHITE TAC | 151.3100 N | None | 151.3100 N | 156.7 | A | MEFORD ODF State TAC | |
| 15N | TACTICAL | RV TAC 2 | CNTY TAC | 159.2400 N | 156.7 | 159.2400 N | 156.7 | A | CNTY tactical | |
| 16N | EMERGENCY | AIRGUARD | All Divisions | 168.6250 N | | 168.6250 N | 110.9 | A | Urgent Aircraft Contact (16CH.HT) | |
| 5. Prepared by Dennis Brigante, COML | | | | Incident Location Fire Latitude Longitude | | | | | | |

The convention calls for frequency lists to show four digits after the decimal place, followed by either an “N” or a “W” depending on whether the frequency is narrow or wide band.

Make Sure Squelch Knob is turned all the way to the left, so it clicks. This is to activate the RX tone Guard. Or you will hear all radio traffic from all areas.

Worthington Fire SWO IMT3 Phone List

| Name | Position | Cell |
|---------------------|--------------------|---------------------|
| Brumm, Joel | Public Information | 541-200-4485 |
| Crawford, Mike | Plans (T) | 458-212-0501 |
| Ferguson, Don | Public Information | 541-778-2679 |
| Hackett, Mike | Safety | 541-531-7081 |
| Hawkinson, Colby | Lead READ | 541-727-8437 |
| Houk, John | Deputy Logistics | 775-815-8577 |
| Jesse Kiene | IC (T) | 541-531-5568 |
| Johnson, Ruth | Plans | 541-591-0920 |
| Johnson, Stacy | READ (T) | 541-201-3119 |
| Knighton, Lynda | Ordering | 541-821-7119 |
| Lane, Michelle | Finance | 801-682-6717 |
| McCann, Mike | IC | 530-249-1694 |
| Stephens, Shane | Ground Support | 541-890-5540 |
| Wallace, Trevor | Operations | 541-450-1133 |
| Wedekind, Cindy | Logistics | 541-450-1136 |
| | | |
| | Demob/check-in | 541816-0454 |
| | | |
| | RVICC | 541-618-2510 |
| | Expanded - Leslie | 541-618-2177 |
| | Expanded - Mary | 541-618-2162 |
| | | |

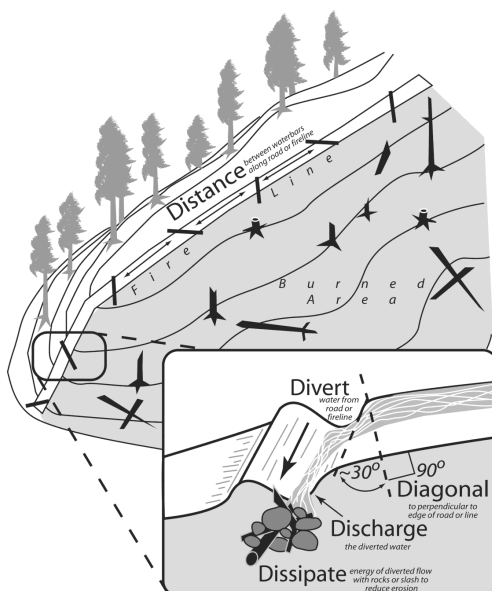
Mop-up Standards for BLM Lands – Worthington Fire, Medford District BLM

The intent of mop up is to make the likelihood of the fire escaping the containment perimeter very unlikely through the rest of the fire season or onset of significant rains. Mop up will be implemented to the degree and location necessary to meet the above intent.

- The Bureau of Land Management's approach to mop-up, in order to minimize unnecessary exposure to firefighters, is not to specify a distance or percentage "standard." There may be parts of the fire that are too dangerous for *any* mop-up (e.g., snag patches, extremely steep/rocky terrain).
- To reduce hazards during mop-up, fall intermittent snags that pose "imminent" danger to firefighters (ref. **Field Guide for Danger Tree Identification and Response**, RG-NR-FP-PR-01-08). Avoid bucking of logs when possible in an effort to keep whole trees in long segments. This fire is extremely rocky in places. Watch for rock and log roll out.
- Spot fires outside the control lines will be mopped up commensurate with exposure and values. The perimeter of spots will be mapped in GIS.
- Mop-up of partially burned areas further inside the lines **will be the exception** and determined on a case-by-case basis by the READ, Safety Officer and Operations depending on the specific values at risk.
- As mop-up specifications are met on a Division, Operations will develop a plan for the resources and equipment to be left in place that may be required for future contingency actions.
- Use the water bar spacing guide along with the diagram and specification below for proper water bar installation.

Water Bar Guidelines (Hand and Dozer Lines)

| Fire Line Slope % | Maximum Water Bar Spacing (feet) |
|-------------------|----------------------------------|
| 2-5 | 300 |
| 6-10 | 200 |
| 11-15 | 150 |
| 16-20 | 100 |
| 21-35 | 75 |
| 36+ | 50 |



- Cut in the water bar – do not simply push up loose soil.
- Water bars should direct runoff AWAY FROM the burned area where possible.

Plans

Fillable forms – time and performance evaluations (click the link, or scan the code): [fillable forms](#)



Adobe Reader DC on your mobile device is required to use fillable PDF forms. Must have adobe reader on your smart device in order to utilize.

Adobe Reader is free and available here: <https://get.adobe.com/reader/>

Demob

1. **Ground Support:** Complete vehicle inspection if not selecting “no damages/no claim” in box 11 on the OF-296 (contractors).
2. **Weed wash:** Complete weed wash, they will ask for your resource order number and let demob know when you have completed.
3. **Communications:** Return radios you have checked out to security at the front door.
4. **Finance:** Close out time with finance.
5. **Plans:**
 - a. Performance evaluations: Available in forms (above). Please complete (if applicable) and email to 2020.worthington.plans@firenet.gov. In the subject line, please include your resource number (example: E-12 performance)
 - b. Send any unit logs or other documentation (if applicable) to 2020.worthington.plans@firenet.gov with your resource number in the subject line.
 - c. **Call demob 541-816-0454 to finalize you check out.** You will not be officially released from the incident until you call.

08/11/2020

TENTATIVE RELEASE

WORTHINGTON US-OR-MED-000243

OVERHEAD

| | | | |
|-------|------|--------|----------------------|
| O-98 | 0700 | (DIVS) | GIBSON, LINDA M |
| O-126 | 1200 | (RESL) | BACKLUND, LAURA JEAN |
| O-64 | 1800 | (PIO2) | BRUMM, JOEL N |
| O-63 | 1800 | (PIO2) | YORK, PATRICIA L |
| O-65 | 1900 | (RCDM) | HAUCK, BENJAMIN |
| O-115 | 2000 | (SEC2) | LANG, KEITH A |
| O-59 | 2000 | (MEDL) | SCHMIDT, RODNEY |
| O-114 | 2000 | (SEC2) | THWEATT, JAMES B |
| O-123 | 2030 | (SOF2) | HACKETT, MICHAEL |
| O-88 | 2100 | (PSC3) | CRAWFORD, MICHAEL W |
| O-76 | 2100 | (LSC3) | HOUK, JOHN E |
| O-134 | 2130 | (PSC3) | JOHNSON, RUTH M |

08/12/2020

TENTATIVE RELEASE

WORTHINGTON US-OR-MED-000243

CREWS

C-27 1200 (CC) BIFZ - CREW #1

EQUIPMENT

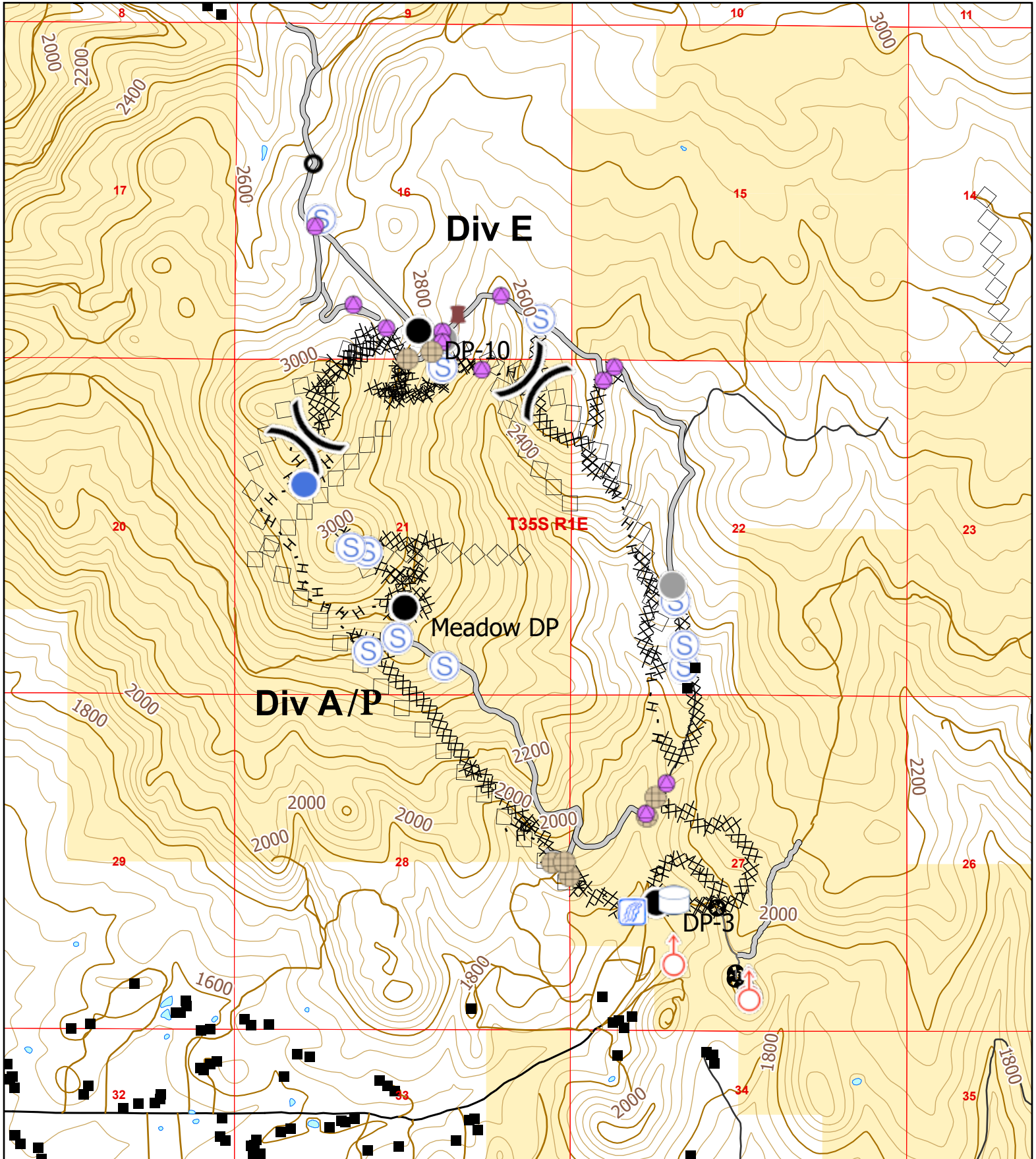
E-22 0800 (SHW) SHOWER - GRAYBACK FORESTRY
E-50 0800 (HNDW) MISC - HANDWASHING STATION
E-51 0800 (HNDW) MISC - HANDWASHING STATION
E-60 0900 (GWT2) GRAY WATER TRUCK - T2 -
E-58 1200 (WEED) MISC - WEED WASHING UNIT -
E-63 1200 (STK) OR-RSF AOV 5191

OVERHEAD

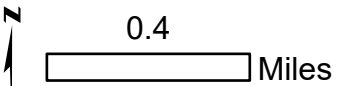
O-73 0700 (ITSS) DZIALOWY, PAUL J
O-71 1000 (ICPI) TAYLOR, TOM
O-130 1200 (DRIV) BEEMER, SCOT
O-113 1200 (BCMG) HAWKINS, THOMAS P
O-131 1200 (DRIV) REBURN, CHERY L
O-102 1200 (GSUL) STEPHENS, JOSEPH S
O-94 1200 (LSC1) WEDEKIND, CINDY M
O-135 1230 (ICT3) MCCANN, MICHAEL L
O-77 1300 (EQTR) LOWE, ANN MARIE
O-118 1300 (PTRC) PHEGLEY, BARBARA JEAN
O-61 1400 (PIO1) FERGUSON, DONALD
O-78 1800 (PTRC) HAYES, KIMBERLI C
O-99 1900 (EMPF) MEDICS, FIRELINE

Worthington

Aug 11, 2020 - Day Shift



Perimeter as of 8/3/20 @ 1800 hrs



Map Scale: 1:24,000
ODF GIS: August 10, 2020, 1557 hrs

- | | | | |
|---|-----------------------|-------------------|---------------------------|
| — Paved Road | ⊕ Pump | ● Helispot | ⊗ Completed Dozer Line |
| — All-Weather Road | ⊕ Water Tank | ● Repair Point | H Completed Hand Line |
| — Dirt Road | ⊕ Culvert | ⊕ Spot Fire | R Road as Completed Line |
| ■ United States Bureau of Land Management | ● Drop Point | ⊕ Staging Area | — Access or Improved Road |
| ■ Structures | ⊕ Dozer Push | ⊕ Stream Crossing | ⊕ Aerial Retardant Drop |
| ■ Waterbodies | ⊕ Fence - Cut/Damaged | ⊕ Other | ⊕ Air Tanker Retardant |
| | | ⊕ Division Break | ⊕ Other |

Download Maps Here



MEDICAL PLAN (ICS 206 WF)

| | | | | | | | | | |
|---|--|--------------|------------------------|--|---|---------------------------------------|--|--------------------------------------|--|
| 1. Incident/Project Name | | | | 2. Shift | | | | | |
| Worthington Fire | | | | Date/Time 8/11/2020 | | Day Shift | | | |
| 3. Ambulance Services | | | | | | | | | |
| Name | Location | | | Phone & EMS Frequency | | Advanced Life Support (ALS) Yes No | | | |
| Mercy Flight Ground | 2020 Milligan Way, Medford, OR | | | 541-779-6551 (911) | | X | | | |
| Jackson County 911 | | | | 911 | | | | | |
| 4. Air Ambulance Services | | | | | | | | | |
| Name | Phone | | | Type of Aircraft & Capability | | | | | |
| Mercy Flights Air | 541-779-6551 | | | Mercy 105 Bell 407 No Hoist Contact Rogue Dispatch to order a Medivac | | | | | |
| Jackson County 911 | 911 | | | | | | | | |
| 5. Hospitals | | | | | | | | | |
| Name & Level | GPS Datum – WGS 84 Degrees Decimal Minutes | | Travel Time Air Gnd | | Phone | Helipad Yes No | | Address | |
| Rogue Valley Medical Center Trauma Yes Level 2 | Lat: | N42°19.07' | 30 min | 45 min | 541-789-7000 | X | | 2825 E. Barnett Road Medford, OR | |
| | Long: | W122° 49.90' | | | | | | | |
| | VHF: | | | | | | | | |
| Providence Medical Center Trauma Yes Level 2 | Lat: | N42°20.33' | 30 min | 45 min | 541-732-5000 | X | | 1111 Crater Lake Ave. Medford, OR | |
| | Long: | W122° 51.77' | | | | | | | |
| | VHF: | | | | | | | | |
| Legacy Emanuel Hospital Trauma Yes Level 1 | Lat: | N45° 32.66' | 2 Hr | 4 Hr | 503-413-2200 | X | | 2801 Gantenbein Ave. Portland, OR | |
| | Long: | W122° 40.18' | | | | | | | |
| | VHF: | | | | | | | | |
| | Lat: | | | | | | | | |
| | Long: | | | | | | | | |
| | VHF: | | | | | | | | |
| 6. Division / Crew Pre-plan. Update daily | | | | | | | | | |
| Mercy Flight Ambulance parked at DP 3 DIV Break between A/P | | | | | | | | | |
| A | Heli Spot DIV Break between A/P Lat. N42°29.795' / Long. W122° 41.582' | | | | | | | | |
| | Heli Spot Meadow DP Lat. N42°30.563' / Long. W122° 42.460' | | | | | | | | |
| E | | | | | | | | | |
| | Heli Spot Lat. N42°31.298' / Long. W122° 42.292' | | | | | | | | |
| P | | | | | | | | | |
| | Heli Spot Lat. N42°30.620' / Long. W122° 41.610' | | | | | | | | |
| 7. Medical Personnel | | | | | | | | | |
| Staged by DIVS | | | | | | | | | |
| Div A/P: Ashley Short EMPF | | | | ALS Equipment, Long board, AED | | | | | |
| Div E: Kyle Meade EMPF | | | | ALS Equipment, Long board, AED | | | | | |
| ICP: Rod Schmidt EMPF/MEDL | | | | ALS Equipment | | | | | |
| <p>In an EMERGENCY contact Rouge Valley Dispatch on Channel 5 (BLM Flounce), Channel 6 (USFS Rustler), or call 541.618.2510.</p> <p>After hours Central Dispatch will answer the radio or call 911.</p> | | | | | | | | | |
| 8. Prepared By (Medical Unit Leader) | | | 9. Date/Time | | 10. Reviewed By (Safety Officer) | | | 11. Date/Time | |
| /S/ Rodney Schmidt MEDL/EMPF | | | 8/10/2020 19:00 | | /S/ Michael Hackett | | | 8/10/2020 19:00 | |