

Worthington

Fire

Incident Action Plan

Wednesday 8/12-16/2020 0700-1900

Medford District BLM and Southwest District ODF

OR-MED-000243

PD NCG5 (1502)



Worthington IAP



Worthington Maps

ORGANIZATION ASSIGNMENT LIST			9. Operations Section	
1. Incident Name	Worthington Fire		Chief (day)	
2. Date	8/11/20	3. Time	19:00	Chief
4. Operational Period	8/12-16/20	0700-1900		
5. Incident Commander and Staff			a. Branch I - Division/Groups	
Incident Commander	O-143 Leo Engleson (LWD 8/24)		Division/Group A / P	O-80 Toby White (LWD 8/16)
	541-941-7741		Division/Group E	O-95 Eric Siemer (LWD 8/15)
	O-144 Ken Fukuda (T) (LWD 8/13)		Division/Group	
	541-324-4739		Division/Group	
Safety Officer	O-86 Roger Beck (LWD 8/14)		Division/Group	
	541-865-3684		b. Branch II - Division/Groups	
		Division/Group		
		Division/Group		
6. Agency Representative			Division/Group	
Agency	Name		Division/Group	
BLM	Jen Sanborn		Division/Group	
ODF	Dave Larson		c. Branch III - Division/Groups	
Lead READ	O-93 Colby Hawkinson (LWD 8/15)		Division/Group	
	541-727-8437		Division/Group	
		Division/Group		
		Division/Group		
7. Planning Section			d. Branch IV Division/Groups	
Chief			Duty Officer	
			Division/Group	
Resource Unit			Division/Group	
Situation Unit			Division/Group	
Documentation Unit			Division/Group	
Demobilization Unit			e. Air Operations Branch	
Technical Specialists			Air Operations	
			Air Tactical Group Supervisor	
			Air Support Group Supervisor	
8. Logistics Section			10. Finance Section	
Chief			Chief	
Deputy			Deputy	
Base Camp Manager			Time Unit	
Supply Unit			Cost Unit	
Facilities Unit			Procurement Unit	
Ground Support Unit			Incident Contract Project Insp	
Support Branch Dir.				
RVICC	541-618-2510		Prepared by (Resource Unit Leader)	
Expanded Dispatch	541-618-2177		<i>Ruth Johnson</i>	
	541-618-2162			

Worthington Fire
National Weather Service Medford
2020-08-11 2:18 PM PDT

Spot Forecast for Worthington Fire...BLM
National Weather Service Medford OR 218 PM PDT Tue Aug 11 2020

Forecast is based on forecast start time of 1800 PDT on August 11. If conditions become unrepresentative...contact the National Weather Service.

.DISCUSSION...Wednesday will be the coolest day of the week over the burn area. It will warm Thursday into the weekend, becoming very hot and dry Saturday and Sunday. Winds will be dominated by terrain based circulations, light in the night and morning hours with upvalley winds in the afternoons and evenings.

.WEDNESDAY...

Sky/weather.....Sunny.
Max temperature.....82-84.
Min humidity.....28-32 percent.
Eye level winds....Variable to 2 mph becoming northwest 4 mph in the afternoon.
Wind (20 ft).....Variable to 5 mph becoming northwest 10 mph in the afternoon.
CWR.....0 percent.
LAL.....1.

.WEDNESDAY NIGHT...

Sky/weather.....Clear.
Min temperature.....47-49.
Max humidity.....74-78 percent.
Eye level winds....Northwest 4 mph in the evening becoming variable to 2 mph.
Wind (20 ft).....Northwest 10 mph in the evening becoming variable to 5 mph.
CWR.....0 percent.
LAL.....1.

\$\$
Forecaster...STOCKTON

Fire Weather Forecast for ORZ622

Fire Weather Forecast for southern Oregon and northern California
National Weather Service Medford, OR 230 PM PDT Tue Aug 11 2020

...RED FLAG WARNING IN EFFECT UNTIL 9 PM PDT THIS EVENING FOR STRONG GUSTY WIND WITH LOW RH FOR FIRE WEATHER ZONES 624 AND 625...

...RED FLAG WARNING IN EFFECT FROM 2 PM TO 8 PM PDT WEDNESDAY STRONG GUSTY WIND WITH LOW RH FOR FIRE WEATHER ZONE 285...

.DISCUSSION...Isolated thunderstorms over northeast California and southern Lake county will diminish this evening. Gusty winds and very low relative humidities now occurring east of the Cascades will diminish this evening, then return to the same areas Wednesday afternoon and evening. However, the critical area will shift into northern California, and a Red Flag Warning is in effect for fire weather zone 285 at that time. The winds will decrease Thursday and Friday, but temperatures will warm and the air mass will dry out. Isolated thunderstorms may develop over western Siskiyou county Saturday.

.WEDNESDAY...

- * Sky/weather.....Partly cloudy.
- * Max temperature.....80-90 valleys and 70-75 ridges.
- * Min humidity.....20-25 percent valleys and 25-35 percent ridges.
- * 20-foot winds.....
- * Valleys/lwr slopes...Light winds becoming northwest 5 to 6 mph in the afternoon.
- * Ridges/upr slopes....Northwest winds 5 to 8 mph.
- * Haines index.....2 or (very low). * LAL.....1.
- * Chc of wetting rain (.10 in)...0 percent. * Chc of wetting rain (.25 in)...0 percent.

	TEMP	HUM	POP
Onion Mtn	74	29	0
Illinois Vly	87	21	0
Medford	87	21	0

.WEDNESDAY NIGHT...

- * Sky/weather.....Mostly clear.
- * Min temperature.....45-55.
- * Max humidity.....70-90 percent valleys and 60-80 percent ridges.
- * 20-foot winds.....
- * Valleys/lwr slopes...North winds 5 to 8 mph except northwest 5 to 15 mph near Ashland.
- * Ridges/upr slopes....Northwest winds 5 to 10 mph with gusts to around 20 mph shifting to the northeast 5 to 8 mph after midnight.
- * Haines index.....2 or (very low). * LAL.....1.
- * Chc of wetting rain (.10 in)...0 percent. * Chc of wetting rain (.25 in)...0 percent.

	TEMP	HUM	POP
Onion Mtn	47	76	0
Illinois Vly	48	93	0
Medford	55	64	0

.THURSDAY...

- * Sky/weather.....Sunny.
- * Max temperature.....85-90 valleys and 75-80 ridges.
- * Min humidity.....15-30 percent.
- * 20-foot winds.....
- * Valleys/lwr slopes...North winds 5 to 8 mph.
- * Ridges/upr slopes....North winds 5 to 8 mph.
- * Haines index.....4 or (low). * LAL.....1.
- * Chc of wetting rain (.10 in)...0 percent. * Chc of wetting rain (.25 in)...0 percent.

	TEMP	HUM	POP
Onion Mtn	76	24	0
Illinois Vly	90	17	0
Medford	90	20	0

.EXTENDED...

- .THURSDAY NIGHT...Clear. Lows 50 to 55. North winds 5 to 8 mph.
- .FRIDAY...Clear. Highs 85 to 95. North winds 5 to 8 mph.
- .SATURDAY...Clear. Lows 55 to 65. Highs 90 to 100. North winds 5 to 6 mph.
- .SUNDAY...Mostly clear. Lows 60 to 70. Highs 90 to 100. Southwest winds 5 to 8 mph.
- .MONDAY...Mostly clear. Lows 60 to 65. Highs 90 to 100.
- .TUESDAY...Mostly clear. Lows 60 to 65. Highs 90 to 95.

.OUTLOOK FOR AUG 19 - 25 2020

For Oregon...Increased probabilities for near normal temperatures and near normal precipitation.

DIVISION ASSIGNMENT LIST		1. Branch	2. Division Group A / P	
3. Incident Name Worthington Fire		4. Operational Period 8/12-16/20 0700-1900		
5. Operations Personnel				
Operations Chief	O-91 Trevor Wallace		Division/Group Supervisor	O-80 Toby White (LWD 8/16)
Branch Director			Air Attack Supervisor	
6. Resources Assigned This Period				
Strike Team / Task Force / Resource Designator		Leader	Number persons	LWD
C-9 HC2IA	BLM Crew 10	Justin Livdahl	21	off 8/13-14
C-20 HC2	North Pacific Forestry	Jose Perez	20	8/13
E-4 ENG6	JCCJ	Justin Lumpkin	4	8/23
E-5 ENG6	JCCJ	Levi Caster	4	8/13
E-44 WT	Rogue Basin Fire Service	Matt Jordan	1	8/14
O-100 EMPF	Wilderness Medic	Ashley Short	1	8/16
7. Control Operations				
Safely and efficiently conduct repair work on all interior and secondary lines.				
8. Special Instructions				
Maintain availability for initial attack.				
9. Division/Group Communications Summary				
Function	Frequency – RX / tone	Frequency – TX / tone	Channel	Channel Name
Command				
Tactical Div/Group	see communications plan			
Air to Ground				
Prepared by (Resource Unit Leader)		Approved by (Planning Section Chief)		Date Prepared
		<i>Ruth Johnson</i>		8/11/2020
				Time
				19:00

DIVISION ASSIGNMENT LIST		1. Branch	2. Division Group E	
3. Incident Name Worthington Fire		4. Operational Period 8/12-16/20 0700-1900		
5. Operations Personnel				
Operations Chief	O-91 Trevor Wallace		Division/Group Supervisor	O-95 Eric Siemer (LWD 8/15)
Branch Director			Air Attack Supervisor	
6. Resources Assigned This Period				
Strike Team / Task Force / Resource Designator		Leader		Number persons
				LWD
C-25 HC2	Ge Forestry Inc	Gorgonio Ibarra	20	8/14
E-67 EXCA	Allied Water Services	Conor Wolfe	2	8/21
O-93 REAF		Colby Hawkinson	1	8/15
O-104 REAF		Stacy Johnson	1	8/15
REAF		Evan Corrales	1	
REAF (T)		Andrew Stevens (T)	1	
7. Control Operations				
Safely and efficiently conduct repair work on all interior lines.				
8. Special Instructions				
Maintain availability for initial attack.				
9. Division/Group Communications Summary				
Function	Frequency – RX / tone	Frequency – TX / tone	Channel	Channel Name
Command				
Tactical Div/Group	see communications plan			
Air to Ground				
Prepared by (Resource Unit Leader)		Approved by (Planning Section Chief)		Date Prepared
		<i>Ruth Johnson</i>		8/11/2020
				Time
				19:00

AIR OPERATIONS SUMMARY

Prepared By: Mike DeMello

Prepared Date: 08/05/20

Prepared Time: 1200

1. INCIDENT NAME: Worthington Fire	2. OPS PERIOD DATE: 08/12-16/20	START TIME: 0800	END TIME: 2000	SUNRISE: 0608	SUNSET: 2025
3. REMARKS (Safety Notes, Hazards, and Air Operations Special Equipment, etc.): HIGH HOT HEAVY CONDITIONS, SMOKE, HIGH WINDS, TURBULENCE. FOLLOW WIND LIMITATION PROTOCOLS WHEN CONDUCTING AIR OPERATIONS. PLEASE CHECK NOTAMS Please Send all Aircraft costs to orrvcc@firenet.gov			4. READY ALERT AIRCRAFT MEDEVAC: Any Available		5. TFR #: Worthington Fire N42 29.02 W122 42.82 3M Radius 7,000msl

6. PERSONNEL	NAME	PHONE #	7. FREQUENCIES	AM	FM	8. FIXED-WING- Type/ Make-Model/ N#/ Base
UAO	Mike DeMello	541/ 324-0876	A/A Primary	127.000		AIRTANKERS --- Order through RVICC
Medford ATB	Justin Bohannon	479/ 200-0818	Air to Ground	167.0750	167.0750	LEAD PLANES -- Order through RVICC
Medford VLAT	Bo Bohannon	479/ 981-9123	National FF	168.650 R+ 110.9	168.650 T+ 110.9	AERIAL SUPERVISION - Order through RVICC
Fixed Wing-ATGS	Contact RVICC for Availability		Local FF	166.7875 R+ 67.0	166.7875 T+ 67.0	Tanker Base Main Line —541/ 779-0397
Siskiyou Helibase Manager	Matt Schutty	406/ 360-3758	Air Guard	168.625	168.625 T+ 110.9	
2WM Manager	Alex Voshell	208/ 602-9602				
8AC Manager	Corey Favorite	530/ 867-4711	Medford Tanker Base	123.975		

9. HELICOPTERS

FAA N#	TY	MAKE/MODEL	BASE	START	AVAIL	REMARKS	FAA N#	TY	MAKE/MODEL	BASE	START	AVAIL	REMARKS
N178AC	1	S-64	KMFR	0800	0900	Contact RVICC for Availability	AA-305	1	AC-90	KMFR	0800	0900	Contact RVICC for Availability
N202WM	2	KMAX	K3S8	0800	0900	Contact RVICC for Availability	AA-610	1	AC-90	KMFR	0800	0900	Contact RVICC for Availability
S260		CL415	KEUG	0800	0900	Contact RVICC for Availability	N28HX	2	Bell 205++	KMFR	0800	0900	Contact RVICC for Availability
S263		CL415	KEUG	0800		Contact RVICC for Availability							

10. TASK/ MISSION/ ASSIGNMENT (Type/ function includes: Air Tactical, Retardant, Recon, Personnel Transport, Bucket Operations, SAR, etc.)

TYPE/FUNCTION	NAME OF PERSONNEL OR CARGO (If applicable) or instructions for tactical aircraft	MISSION START	FLY FROM	FLY TO
Recon	As Requested	As Requested	Any Location	Fire
Bucket Support	As Requested	As Requested	Any Location	Fire
Troop Transport	As Requested	As Requested	Any Location	Fire
Aerial Supervision	As Requested	As Requested	Medford or Ashland	Fire
UAS	As Requested	As Requested	Any Location	Fire
Supply Missions	As Requested	As Requested	Any Location	Fire

NOTES: Please advise RVICC if any planned UAS Flights are going to be conducted either day or night, so we can de-conflict with all the units including the Medford Airport Tower.

Worthington Fire

August 12-16, 2020

Safety Message

Firefighter & Public Safety Is The # 1 Priority.

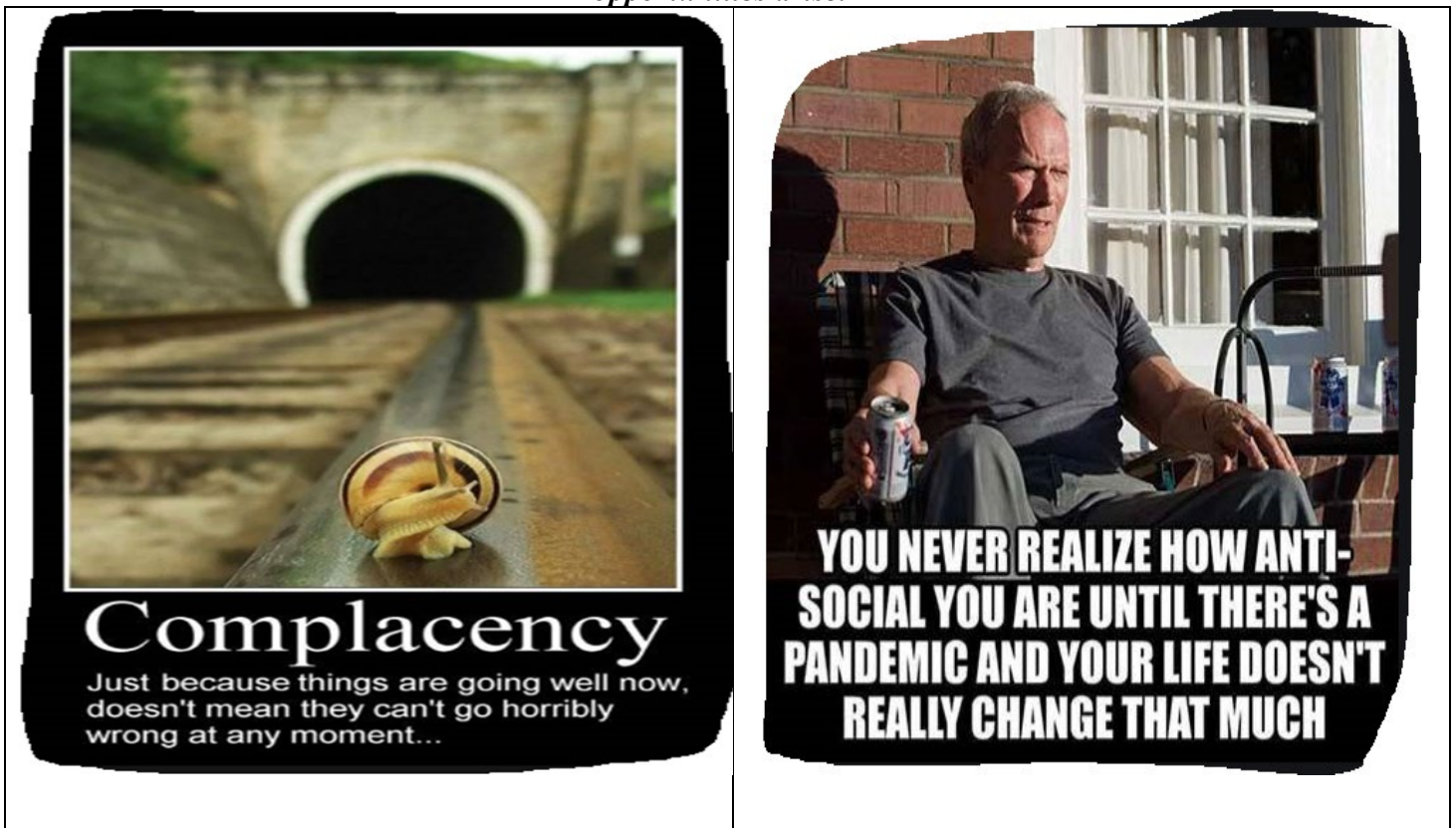
Thanks for the good work everyone is doing, keep up your safety awareness, remain alert and do not let your guard down.

Safety is an individual as well as group responsibility built on a positive attitude and situational awareness.

Safety Checklist

1. **LCES** must be established & known to **ALL** firefighters **BEFORE** needed.
2. Know the four major areas of safety concern on fires: the fireline, ground support, air operations, and camp.
3. Conduct and participate in crew briefings before, during, and after each operational period.
4. Drink enough water to replace fluids lost through perspiration. Drink at least one quart of water per hour.
5. Keep up on weather conditions.
6. Remain alert to other activities around you.

Continue to respect the area you are working in. Pack out all trash from the fireline and drop points as the opportunities arise.



Safety Officer: Roger Beck / Mike Hackett

INCIDENT RADIO COMMUNICATIONS PLAN			Incident Name Worthington Fire			Date/Time Prepared 8/4/2020 1800			Operational Period Date/Time 8/12-16/2020		
Only frequencies listed on this 205 are authorized for use on this incident.											
Ch #	Function	Channel Name/Trunked Radio System Talk-group	Assignment	RX Freq N or W	RX Tone	TX Freq N or W	Tx Tone	Mode	Remarks		
1N	TACTICAL	TAC 1	DIVISION: A	168.2000 N	110.9	168.2000 N	110.9	A	Division Tac		
2N	TACTICAL	TAC 2	DIVISION: E	166.7250 N	110.9	166.7250 N	110.9	A	Division Tac		
3N	TACTICAL	TAC 3	DIVISION:P	168.2500 N	110.9	168.2500 N	110.9	A	Division Tac		
4N	TACTICAL	TAC 4	DIVISION: Unassigned	166.7750 N	110.9	166.7750 N	110.9	A	Unassigned		
5N	COMMAND	BLM FLOUNCE	All Branches	172.4500 N	None	166.3500 N	100.0	A	Command to ICP talks to RVICC dispatch		
6N	COMMAND	USFS Rustler High Cascades	All Branches	169.5750 N	67.0	164.8750 N	79.7	A	Command to ICP talks to RVICC dispatch		
7N	COMMAND	USFS Robinson High Cascades	All Branches	169.5750 N	67.0	164.8750 N	91.5	A	Command to ICP talks to RVICC dispatch		
8N	COMMAND	USFS Dutchman Siskiyou Mtns	All Branches	169.9750 N	67.0	164.9375 N	118.8	A	Command to ICP talks to RVICC dispatch		
9N	TACTICAL	RSF TAC	USFS TAC	167.4250 N	67.0	167.4250 N	67.0	A	Forest Tac		
10N	AIR to GROUND	A/G 1	Worthington Secondary	167.0750 N	None	167.0750 N	None	A	For Aircraft contact		
11N	ODF FLOUNCE	RPTR	ODF FLOUNCE	151.1750 N	None	159.4125	173.8	A	MEFORD ODF State RPTR		
12N	ODF ROXY	RPTR	ODF ROXY	151.1750 N	None	159.4125	179.9	A	MEFORD ODF State RPTR		
13N	ODF RED	ODF RED	ODF RED TAC	151.3400 N	None	151.3400 N	156.7	A	MEFORD ODF State TAC		
14N	ODF WHITE	ODF WHITE	ODF WHITE TAC	151.3100 N	None	151.3100 N	156.7	A	MEFORD ODF State TAC		
15N	TACTICAL	RV TAC 2	CNTY TAC	159.2400 N	156.7	159.2400 N	156.7	A	CNTY tactical		
16N	EMERGENCY	AIRGUARD	All Divisions	168.6250 N		168.6250 N	110.9	A	Urgent Aircraft Contact (16CH.HT)		
5. Prepared by Dennis Brigante, COML					Incident Location Fire Latitude Longitude						

The convention calls for frequency lists to show four digits after the decimal place, followed by either an “N” or a “W” depending on whether the frequency is narrow or wide band.

Make Sure Squelch Knob is turned all the way to the left, so it clicks. This is to activate the RX tone Guard. Or you will hear all radio traffic from all areas.

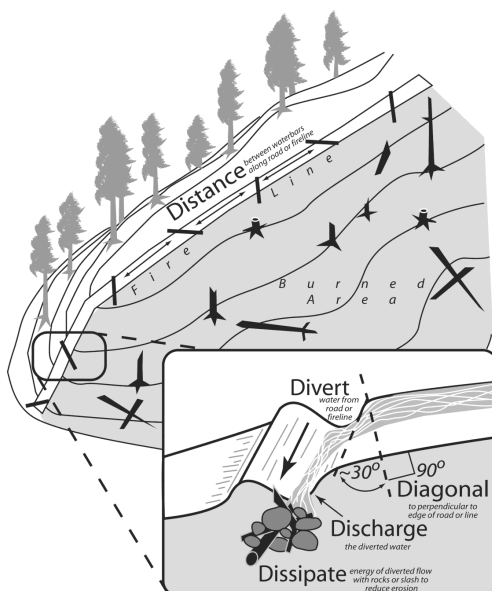
Mop-up Standards for BLM Lands – Worthington Fire, Medford District BLM

The intent of mop up is to make the likelihood of the fire escaping the containment perimeter very unlikely through the rest of the fire season or onset of significant rains. Mop up will be implemented to the degree and location necessary to meet the above intent.

- The Bureau of Land Management's approach to mop-up, in order to minimize unnecessary exposure to firefighters, is not to specify a distance or percentage "standard." There may be parts of the fire that are too dangerous for *any* mop-up (e.g., snag patches, extremely steep/rocky terrain).
- To reduce hazards during mop-up, fall intermittent snags that pose "imminent" danger to firefighters (ref. **Field Guide for Danger Tree Identification and Response**, RG-NR-FP-PR-01-08). Avoid bucking of logs when possible in an effort to keep whole trees in long segments. This fire is extremely rocky in places. Watch for rock and log roll out.
- Spot fires outside the control lines will be mopped up commensurate with exposure and values. The perimeter of spots will be mapped in GIS.
- Mop-up of partially burned areas further inside the lines **will be the exception** and determined on a case-by-case basis by the READ, Safety Officer and Operations depending on the specific values at risk.
- As mop-up specifications are met on a Division, Operations will develop a plan for the resources and equipment to be left in place that may be required for future contingency actions.
- Use the water bar spacing guide along with the diagram and specification below for proper water bar installation.

Water Bar Guidelines (Hand and Dozer Lines)

Fire Line Slope %	Maximum Water Bar Spacing (feet)
2-5	300
6-10	200
11-15	150
16-20	100
21-35	75
36+	50



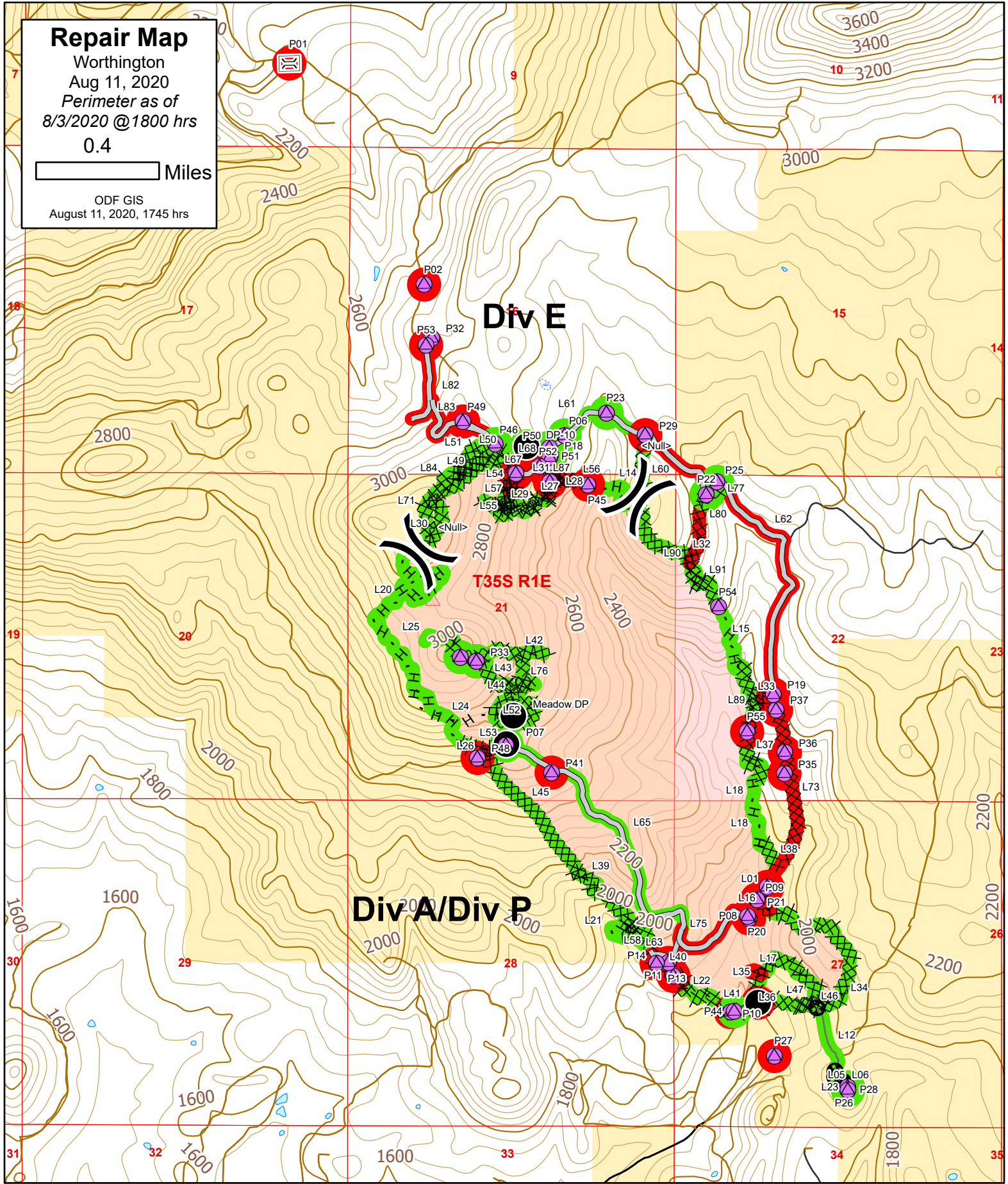
- Cut in the water bar – do not simply push up loose soil.
- Water bars should direct runoff AWAY FROM the burned area where possible.

Repair Map

Worthington
 Aug 11, 2020
 Perimeter as of
 8/3/2020 @ 1800 hrs
 0.4

0.4 Miles

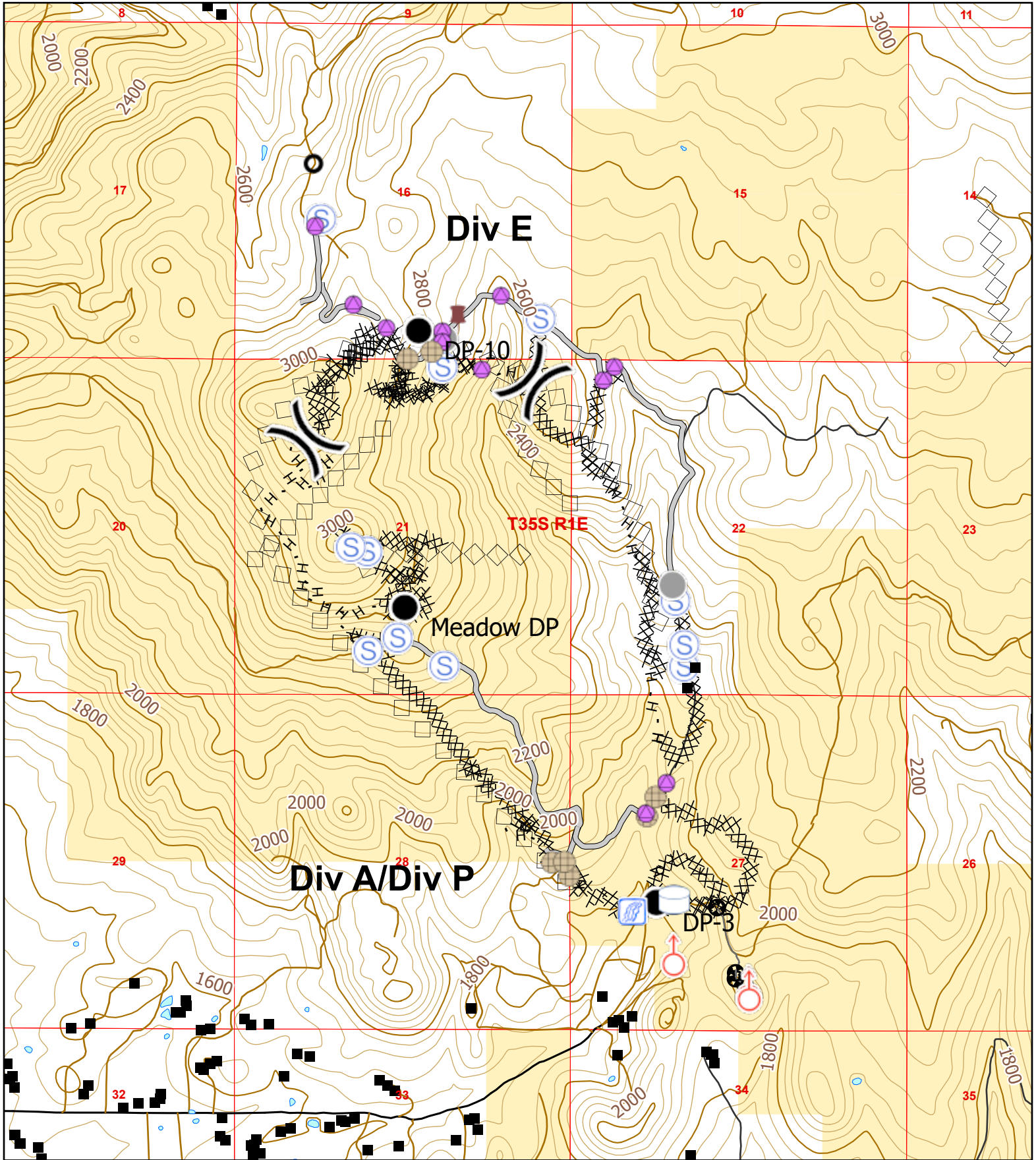
ODF GIS
 August 11, 2020, 1745 hrs



- | | | | | |
|--------------------|--------------------------|---------------------------------|-------------------------|-------------------------|
| ● Drop Point | ⊗ Completed Dozer Line | ▭ Wildfire Daily Fire Perimeter | ● Repair Status Point | ▭ Repair Status Line |
| ⊕ Repair Point | H Completed Hand Line | ▭ PLSS Sections | ● Completed - Inspected | ▭ Completed - Inspected |
|) (Division Break | R Road as Completed Line | ▭ Bureau of Land Management | ● Ready for Inspection | ▭ Ready for Inspection |
| — Access Road | ⊕ Other | | ● Repair Needed | ▭ Repair Needed |

Worthington

Aug 11, 2020 - Day Shift



Perimeter as of 8/3/20 @ 1800 hrs

0.4 Miles

Map Scale: 1:24,000
ODF GIS: August 11, 2020, 1544 hrs

- | | | | |
|---|-----------------------|-------------------|---------------------------|
| — Paved Road | P Pump | ● Repair Point | XX Completed Dozer Line |
| — All-Weather Road | ⊕ Water Tank | ⚡ Spot Fire | H Completed Hand Line |
| — Dirt Road | ○ Culvert | ⊙ Staging Area | R Road as Completed Line |
| ■ United States Bureau of Land Management | ● Drop Point | ⊗ Stream Crossing | — Access or Improved Road |
| ■ Structures | ⚡ Dozer Push | ● Other | ◇ Aerial Retardant Drop |
| ■ Waterbodies | ● Fence - Cut/Damaged | ⊗ Division Break | ◇ Air Tanker Retardant |
| | | ⊕ Other | |

Download Maps Here



MEDICAL PLAN (ICS 206 WF)

1. Incident/Project Name				2. Shift											
Worthington Fire				Date/Time 8/12-16/2020 Day Shift											
3. Ambulance Services															
Name		Location		Phone & EMS Frequency		Advanced Life Support (ALS) Yes No									
Mercy Flight Ground		2020 Milligan Way, Medford, OR		541-779-6551 (911)		X									
Jackson County 911				911											
4. Air Ambulance Services															
Name		Phone		Type of Aircraft & Capability											
Mercy Flights Air		541-779-6551 (911)		Mercy 105 Bell 407 No Hoist Contact Rogue Dispatch to order a Medivac											
Jackson County 911		911													
5. Hospitals															
Name & Level		GPS Datum – WGS 84 Degrees Decimal Minutes		Travel Time Air Gnd		Phone		Helipad Yes No		Address					
Rogue Valley Medical Center Trauma Yes Level 2		Lat:	N42°19.07'		30 min	45 min	541-789-7000	X		2825 E. Barnett Road Medford, OR					
		Long:	W122° 49.90'												
		VHF:													
Providence Medical Center Trauma Yes Level 2		Lat:	N42°20.33'		30 min	45 min	541-732-5000	X		1111 Crater Lake Ave. Medford, OR					
		Long:	W122° 51.77'												
		VHF:													
Legacy Emanuel Hospital Trauma Yes Level 1		Lat:	N45° 32.66'		2 Hr	4 Hr	503-413-2200	X		2801 Gantenbein Ave. Portland, OR					
		Long:	W122° 40.18'												
		VHF:													
		Lat:													
		Long:													
		VHF:													
6. Division / Crew Pre-plan. Update daily															
A		Heli Spot DIV Break between A/P Lat. N42°29.795' / Long. W122° 41.582'													
		Heli Spot Meadow DP Lat. N42°30.563' / Long. W122° 42.460'													
E															
		Heli Spot Lat. N42°31.298' / Long. W122° 42.292'													
P															
		Heli Spot Lat. N42°30.620' / Long. W122° 41.610'													
7. Medical Personnel															
Staged by DIVS															
Div A, E, P: Ashley Short EMPF				ALS Equipment, Long board, AED											
<p>In an EMERGENCY contact Rouge Valley Dispatch on Channel 5 (BLM Flounce), Channel 6 (USFS Rustler), or call 541.618.2510.</p> <p>After hours Central Dispatch will answer the radio or call 911.</p>															
8. Prepared By (Medical Unit Leader)				9. Date/Time				10. Reviewed By (Safety Officer)				11. Date/Time			
/S/ Rodney Schmidt MEDL/EMPF				8/11/2020 19:00				/S/ Michael Hackett				8/11/2020 19:00			

