

# WORTHINGTON FIRE

## Incident Action Plan

Tuesday, August 4, 2020

Medford District BLM and Southwest District ODF

OR-MED-000243

PD NCG5 (1502)



Worthington IAP



Check in (first day only)



Southwest Oregon IMT3



Worthington Maps

<b>Incident Objectives</b>	1. Incident Name Worthington Fire	Date Prepared 1/0/1900	Time Prepared 21:00
2. Operational Period (Date and Time) 8/4/2020 0600-2000			
3. Objective(s):			
Maintain firefighter and public safety as the highest priority by assuring briefings and implementing mitigation measures to identified risks.			
Implement COVID-19 mitigation procedures and follow established protocols to the extent feasible in order to minimize exposure and transmission to fire firefighters and communities.			
Maintain and build positive relationships with impacted landowners, utilities, public, and cooperating agencies.			
Manage the fire with full suppression, the predominant strategy being rapid containment in accordance with current BLM and ODF policy.			
Keep the fire within the current footprint.			
Protect tribal, cultural, archeological, and sensitive plant sites by coordinating with Resource Advisors.			
Provide for initial attack resources in coordination with southwest Oregon needs.			
4. Operational Period Command Emphasis:			
Maintain situational awareness throughout the operational period, including travel to and from the fire. Utilizing LCES and the 10 & 18's to ensure firefighter and public safety. Establish and maintain positive relationships with adjoining forces and public.			
7. General Situation Awareness:			
See spot weather forecast.			
8. Attachments (check if attached)			
<input checked="" type="checkbox"/> Organization List (ICS 203)	<input checked="" type="checkbox"/> Medical Plan (ICS 206)	<input checked="" type="checkbox"/> <u>medical 8 line</u>	
<input checked="" type="checkbox"/> Assignment List (ICS 204)	<input checked="" type="checkbox"/> Incident Map	<input checked="" type="checkbox"/> <u>safety message</u>	
<input checked="" type="checkbox"/> Communications Plan (ICS 205)	<input type="checkbox"/> Traffic Plan	<input type="checkbox"/> _____	
ICS-202	9. Prepared by (PSC) <i>Ruth Johnson</i>	10. Approved by (IC) <i>Mike McCann</i>	

ORGANIZATION ASSIGNMENT LIST			9. Operations Section	
1. Incident Name	Worthington Fire		Chief (day)	O-91 Trevor Wallace (no check in)
2. Date	8/3/20	3. Time 21:00	Chief	
4. Operational Period	8/4/20	0600-2000	<b>a. Branch I - Division/Groups</b>	
<b>5. Incident Commander and Staff</b>			Division/Group A	O-98 Linda Gibson (LWD 8/10)
Incident Commander	Mike McCann		Division/Group E	O-95 Eric Siemer (LWD 8/15)
	O-92 Jesse Kiene (T) (no check in)		Division/Group P	O-97 Nate Robinson (LWD 8/9)
Safety Officer	Mike Hackett		Division/Group Night	O-6 Dana Pease (LWD 8/13)
	O-86 Roger Beck (LWD 8/14)		Division/Group	
Information Officer	O-61 Don Ferguson (LWD 8/14)		Division/Group	
Liaison Officer - COVID	O-93 Colby Hawkinson (no check in)		<b>b. Branch II - Division/Groups</b>	
			Division/Group	
<b>6. Agency Representative</b>			Division/Group	
Agency	Name		Division/Group	
BLM	Jen Sanborn		Division/Group	
ODF	Dave Larson		Division/Group	
			<b>c. Branch III - Division/Groups</b>	
			Division/Group	
			Division/Group	
			Division/Group	
<b>7. Planning Section</b>			Division/Group	
Chief	Ruth Johnson		<b>d. Branch III Division/Groups</b>	
	O-88 Mike Crawford (T) (LWD 8/14)		Duty Officer	
Resource Unit			Division/Group	
Situation Unit			Division/Group	
Documentation Unit			Division/Group	
Demobilization Unit			Division/Group	
Technical Specialists			<b>e. Air Operations Branch</b>	
			Unit Aviation Officer	Mike DeMello
			Air Tactical Group Supervisor	
			Air Support Group Supervisor	
<b>8. Logistics Section</b>			<b>10. Finance Section</b>	
Chief	O-94 Cindy Wedekind (LWD 8/8)		Chief	O-117 Michelle Lane (LWD 8/14)
Deputy	O-76 John Houk (LWD 8/10)			O-116 Barb Johnson (T) (LWD 8/8)
Base Camp Manager	O-113 Tom Hawkins (no check in)		Personnel Time Recorder	O-118 Barbara Phegley (no check in)
Supply Unit			Time Unit	
Facilities Unit			Cost Unit	
Ground Support Unit	O-102 Shane Stephens (no check in)		Procurement Unit	
Support Branch Dir.			Incident Contract Project Insp	O-71 Tom Taylor (LWD 8/8)
Medical Unit				
Security	O-68 Bobby Semblante (LWD 8/9)		Prepared by (Resource Unit Leader)	
			<i>Ruth Johnson</i>	

**Worthington Fire**  
National Weather Service Medford  
2020-08-03 2:40 PM PDT

Spot Forecast for Worthington Fire...BLM  
National Weather Service Medford OR  
239 PM PDT Mon Aug 3 2020

Forecast is based on forecast start time of 1600 PDT on August 03.  
If conditions become unrepresentative...contact the National Weather Service.

.DISCUSSION...Dry weather will continue through Tuesday. Winds will pick up once again around 3 pm pdt and it will remain breezy until around 8 pm pdt. Overnight recoveries will be fairly good tonight. Tomorrow, it will be dry. Any isolated thunderstorms are expected to be east and south of the burn area. Gusty breezes are possible again late in the afternoon and early evening. Gusty breezes are mainly a result of a tightening pressure gradient.

.TUESDAY...

Sky/weather.....Sunny in the morning. Partly cloudy in the afternoon.  
Max temperature.....89-91.  
Min humidity.....26 percent.  
Eye level winds.....Variable 0-2 mph in the morning. Northwest 3-6 mph in the afternoon.  
Wind (20 ft).....Variable 1-3 mph in the morning. Northwest 6-12 with a few gust to 16 mph in the afternoon.  
CWR.....0 percent.  
LAL.....1.  
Mixing height.....500 ft AGL increasing to 5400 ft AGL in the afternoon.  
Mixing winds.....Northwest 6-11 mph.

\$\$

Forecaster...PETRUCELLI  
Requested by...Mike Crawford  
Type of request...WILDFIRE  
.TAG 2010329.1/MFR  
.DELDT 08/03/20

<b>DIVISION ASSIGNMENT LIST</b>		1. Branch	2. Division Group <b>A</b>	
3. Incident Name <b>Worthington Fire</b>		4. Operational Period <b>8/4/20 0600-2000</b>		
<b>5. Operations Personnel</b>				
Operations Chief	<b>O-91 Trevor Wallace</b>	Division/Group Supervisor	<b>O-98 Linda Gibson (LWD 8/10)</b>	
Branch Director		Air Attack Supervisor		
<b>6. Resources Assigned This Period</b>				
Strike Team / Task Force / Resource Designator		Leader	Number persons	LWD
C-9 HC2IA	BLM Crew 10	Justin Livdahl	21	8/13
C-14 HC2	R&R Contracting	Jaime Lope	20	8/13
C-15 HC2	Ponderosa Reforestation	Sergio Bencomo	20	8/12
C-22 HC2	Dust Busters Plus	Chris Urban	20	8/13
E-21 WT	Absolute Water	William Hogue	1	8/13
E-44 WT	Rogue Basin Fire Service		1	8/14
E-55 WT	Able	Jeremy Smith	1	8/16
E-56 WT		Steven Grubb	1	no check in
O-20 FMOD	Wapati	Dan Fyfert	2	8/15
O-84	TFLD	Andy Murrin	1	no check in
7. Control Operations Continue to secure and mop up.				
8. Special Instructions				
<b>9. Division/Group Communications Summary</b>				
Function	Frequency – RX / tone	Frequency – TX / tone	Channel	Channel Name
Command				
Tactical Div/Group	see communications plan			
Air to Ground				
Prepared by (Resource Unit Leader)		Approved by (Planning Section Chief) <i>Ruth Johnson</i>		Date Prepared 8/3/2020
				Time 21:00

<b>DIVISION ASSIGNMENT LIST</b>		1. Branch	2. Division Group <b>E</b>	
3. Incident Name <b>Worthington Fire</b>		4. Operational Period <b>8/4/20 0600-2000</b>		
5. <b>Operations Personnel</b>				
Operations Chief	<b>O-91 Trevor Wallace</b>	Division/Group Supervisor	<b>O-95 Eric Siemer (LWD 8/15)</b>	
Branch Director		Air Attack Supervisor		
6. <b>Resources Assigned This Period</b>				
Strike Team / Task Force / Resource Designator		Leader	Number persons	LWD
C-16 HC2	Ponderosa Reforestation	Marcos Contreros	20	no check in
C-23 HC2	Dust Busters Plus	Tim Jensen	20	8/13
C-24 HC2	Mp Forestry Inc	Raul Moreno	20	8/14
C-25 HC2	Ge Forestry Inc	Gorgonio Ibarra	20	8/14
E-42 ENG6	Parker Excavation	James Duggins	2	8/13
E-23 WT	Rogue Fire Logistics	Issac Farras	1	8/13
E-24 WT	Brierville	Mike Hanson	1	8/13
E-30 DOZ	DC Fire	Shad Vaughan	2	8/13
E-31 DOZ	Valley Timber Resources	Greg Nelson	2	
O-83	TFLD	Tumasi Ross	1	8/8
O-82	TFLD(T)	Collin O'Brien	1	8/15
7. Control Operations Continue to secure fire's edge. Mop up 100 feet in from fire's edge.				
8. Special Instructions				
9. <b>Division/Group Communications Summary</b>				
Function	Frequency – RX / tone	Frequency – TX / tone	Channel	Channel Name
Command				
Tactical Div/Group	see communications plan			
Air to Ground				
Prepared by (Resource Unit Leader)		Approved by (Planning Section Chief) <i>Ruth Johnson</i>		Date Prepared 8/3/2020
				Time 21:00

DIVISION ASSIGNMENT LIST		1. Branch	2. Division Group	
3. Incident Name		Worthington Fire		4. Operational Period
				8/4/20 0600-2000
5. Operations Personnel				
Operations Chief	O-91 Trevor Wallace		Division/Group Supervisor	O-97 Nate Robinson (LWD 8/9)
Branch Director			Air Attack Supervisor	
6. Resources Assigned This Period				
Strike Team / Task Force / Resource Designator		Leader	Number persons	LWD
C-18 HC2	North Pacific Forestry	Jose Cicisneros	20	8/13
C-19 HC2	North Pacific Forestry	Anderson	20	8/13
C-20 HC2	North Pacific Forestry	Jose Perez	20	8/13
C-21 HC2	OC Forestry	Valentine	20	no check in
E-27 ENG3	JMJ	John Giordano	2	8/13
E-28 ENG3	JMJ	Steve Haddix	2	8/13
E-8 ENG6	Knightfire			no check in
E-16 ENG6	North Pacific Forestry	Tim Teel	2	8/14
E-29 ENG4	JMJ	Jesse Reigard	2	8/13
E-32 DOZ	Applegate Excavation	Sebastian	2	8/14
E-45 WT	Rogue Valley H2O	George	1	8/14
O-21 FMOD	Wapati	Tom O'Donnell	2	8/15
O-27 FMOD	Pacific Ridgeline	Adams/Miller	2	8/15
O-81	TFLD	Cody Bates	1	8/15
E-57	Skidgine			no check in
O-100	Wilderness Medic	Ashley Short	1	
O-101	Wilderness Medic	Mark Bressey	1	8/16
7. Control Operations				
Patrol all containment lines. Mop up as needed				
8. Special Instructions				
9. Division/Group Communications Summary				
Function	Frequency – RX / tone	Frequency – TX / tone	Channel	Channel Name
Command				
Tactical Div/Group	see communications plan			
Air to Ground				
Prepared by (Resource Unit Leader)		Approved by (Planning Section Chief)		Date Prepared
		<i>Ruth Johnson</i>		8/3/2020
				Time
				21:00

<b>DIVISION ASSIGNMENT LIST</b>		1. Branch	2. Division Group <b>Night</b>	
3. Incident Name	Worthington Fire	4. Operational Period		8/4/20 1800-0800
5. <b>Operations Personnel</b>				
Operations Chief	O-91 Trevor Wallace	Division/Group Supervisor	O-6 Dana Pease (LWD)	
Branch Director		Air Attack Supervisor		
6. <b>Resources Assigned This Period</b>				
Strike Team / Task Force / Resource Designator		Leader	Number persons	LWD
C-6 HC2	Abraham Contracting		20	(no check in)
C-11 HC2	GE Forestry		20	8/15
E-4 ENG6	JCCJ		3	(no check in)
E-5 ENG6	JCCJ		3	(no check in)
E-3 WT	Mike Water Truck		1	8/12
O-48 TFLD (T)		Anne Trapanese (T)	1	8/9
	Ambulance			
7. Control Operations Patrol all containment lines. Mop up as needed.				
8. Special Instructions				
9. <b>Division/Group Communications Summary</b>				
Function	Frequency – RX / tone	Frequency – TX / tone	Channel	Channel Name
Command				
Tactical Div/Group	see communications plan			
Air to Ground				
Prepared by (Resource Unit Leader)	Approved by (Planning Section Chief) <i>Ruth Johnson</i>		Date Prepared	Time
			8/3/2020	21:00



# AIR OPERATIONS SUMMARY

Prepared By: Mike DeMello

Prepared Date: 08/03/20

Prepared Time: 1200

<b>1. INCIDENT NAME:</b> Worthington Fire	<b>2. OPS PERIOD DATE:</b> 08/04/20	<b>START TIME:</b> 0800	<b>END TIME:</b> 2000	<b>SUNRISE:</b> 0606	<b>SUNSET:</b> 2027
<b>3. REMARKS (Safety Notes, Hazards, and Air Operations Special Equipment, etc.):</b>  HIGH HOT HEAVY CONDITIONS, SMOKE, HIGH WINDS, TURBULENCE. FOLLOW WIND LIMITATION PROTOCOLS WHEN CONDUCTING AIR OPERATIONS. PLEASE CHECK NOTAMS  Please Send all Aircraft costs to orrvcc@firenet.gov			<b>4. READY ALERT AIRCRAFT</b>  MEDEVAC: Any Available		<b>5. TFR #:</b> Worthington Fire N42 29.02 W122 42.82 3M Radius 7,000msl  Jump Activities at OR96 (Beagle Airport) for 2 days

6. PERSONNEL	NAME	PHONE #	7. FREQUENCIES	AM	FM	8. FIXED-WING- Type/ Make-Model/ N#/ Base
UAO	Mike DeMello	541/ 324-0876	A/A Primary	127.000		AIRTANKERS --- Order through RVICC
Medford ATB	Justin Bohannon	479/ 200-0818	Air to Ground	167.0750	167.0750	LEAD PLANES -- Order through RVICC
Medford VLAT	Bo Bohannon	479/ 981-9123	National FF	168.650 R+ 110.9	168.650 T+ 110.9	AERIAL SUPERVISION - Order through RVICC
Fixed Wing-ATGS	Contact RVICC for Availability		Local FF	166.7875 R+ 67.0	166.7875 T+ 67.0	Tanker Base Main Line ---541/ 779-0397
Siskiyou Helibase Manager	Andrew Larimore	307/431-6165	Air Guard	168.625	168.625 T+ 110.9	UAS Pilot -- Steve Rammakers 208/ 473-8708
2WM Manager	Alex Voshell	208/ 602-9602				
8AC Manager	Corey Favorite	530/ 867-4711	Medford Tanker Base	123.975		

## 9. HELICOPTERS

FAA N#	TY	MAKE/ MODEL	BASE	START	AVAIL	REMARKS	FAA N#	TY	MAKE/ MODEL	BASE	START	AVAIL	REMARKS
N178AC	1	S-64	KMFR	0800	0900	Contact RVICC for Availability	AA-305	1	AC-90	KMFR	0800	0900	Contact RVICC for Availability
N202WM	2	KMAX	K3S8	0800	0900	Contact RVICC for Availability	AA-610	1	AC-90	KMFR	0800	0900	Contact RVICC for Availability
S260		CL415	KMFR	0800	0900	Contact RVICC for Availability	N28HX	2	Bell 205++	KMFR	0800	0900	Contact RVICC for Availability
S263		CL415	KMFR	0800	0900	Contact RVICC for Availability	UMR 1	3	UAS	Medford	0800	0900	

<b>10. TASK/ MISSION/ ASSIGNMENT (Type/ function includes: Air Tactical, Retardant, Recon, Personnel Transport, Bucket Operations, SAR, etc.</b>				
<b>TYPE/FUNCTION</b>	<b>NAME OF PERSONNEL OR CARGO (If applicable) or instructions for tactical aircraft</b>	<b>MISSION START</b>	<b>FLY FROM</b>	<b>FLY TO</b>
Recon	As Requested	As Requested	Any Location	Fire
Bucket Support	As Requested	As Requested	Any Location	Fire
Troop Transport	As Requested	As Requested	Any Location	Fire
Aerial Supervision	As Requested	As Requested	Medford or Ashland	Fire
UAS	As Requested	As Requested	Any Location	Fire
Supply Missions	As Requested	As Requested	Any Location	Fire

**NOTES: Please advise RVICC if any planned UAS Flights are going to be conducted either day or night, so we can de-conflict with all the units including the Medford Airport Tower.**

***Worthington Fire  
August 4, 2020  
Safety Message***

**Planning for Medical Emergencies:**

Prior to each operational period supervisors and all wildland firefighters need to ask and be able to answer the following three questions:

- 1. What are we going to do if someone gets hurt?**
- 2. How will we get them out of here?**
- 3. How long will it take to get them to a hospital?**

*Use the Medical plan and eight line in your IAP for Medical issues on the fire. Document all activities during the process.*

**Dehydration** is the result of the body trying to regulate its temperature naturally through sweating. Maintaining body fluids is essential for sweating. You must hydrate before, during, and after work.

- Studies conducted on wildland firefighters indicate that during fire suppression activities firefighters need to drink a minimum of 1 quart of fluid each hour of work.
- Before work, you should take extra fluids to prepare for the heat. Drink 1 or 2 cups of water, juice, or a sports drink before work.
- Hyponatremia (abnormally low concentration of sodium in the blood), as a result of excessive water intake, is a potentially life-threatening complication and can be prevented when rehydration is enhanced by fluids containing sodium and potassium, or when foods with these electrolytes are consumed along with water.
- After work, it is important to continue drinking to replace fluid losses. Thirst always underestimates fluid needs, so you should drink more than you think you need.
- You can assess your hydration by observing the volume, color, and concentration of your urine. Low volumes of dark, concentrated urine or painful urination indicate a serious need for rehydration. Other signs of dehydration include a rapid heart rate, weakness, excessive fatigue, and dizziness.
- Rapid loss of several pounds of body weight is a certain sign of dehydration. Rehydrate before returning to work; continuing to work in a dehydrated state can lead to serious consequences, including heat stroke, muscle breakdown, and kidney failure.

**Snags:** Snags are dead, standing trees without leaves or needles in the crowns and present a significant threat to forest worker safety. Snags may burn through more quickly than green trees and can fall without warning.

**Environmental conditions that increase risk from hazard trees:**

- Strong or gusty winds from storm cells.
- Air operations - water or retardant drops, rotor wash from helicopters.
- Steep slopes with rolling material.
- Diseased or bug-killed areas (Mountain Pine Beetle).
- Fire weakened timber.
- Reduced visibility from smoke, fog or darkness

**Driving is one of the most hazardous things we do because we literally perform the task hundreds of times in the course of our daily lives we tend to take it for granted. Based on recent accident trends vehicle accidents are the source of more deaths and serious injuries to wildland firefighters than any other single cause. Follow all speed limits, fastening your seat belt, checking your mirrors, and maintaining safe following distances. Keep your windshield clean. When talking with passengers keep your eyes on the road and both hands on the steering wheel. Safe driving starts with a safe vehicle something as simple as under-inflated tires can have serious consequences. Before operating any vehicle do a walk-around to look for potential problems. Make sure the lights and blinkers work and adjust your seat and mirrors. If it is the first time you have driven the vehicle make yourself aware of where everything is.**

**Safety Officer:** Mike Hackett

INCIDENT RADIO COMMUNICATIONS PLAN			Incident Name <b>Worthington Fire</b>			Date/Time Prepared 8/3/2020 1800			Operational Period Date/Time 8/04/2020 Wednesday 24 hour		
Only frequencies listed on this 205 are authorized for use on this incident.											
Ch #	Function	Channel Name/Trunked Radio System Talk-group	Assignment	RX Freq N or W	RX Tone	TX Freq N or W	Tx Tone	Mode	Remarks		
1N	TACTICAL	TAC 1	DIVISION: A	168.2000 N	110.9	168.2000 N	110.9	A	Division Tac		
2N	TACTICAL	TAC 2	DIVISION: E	166.7250 N	110.9	166.7250 N	110.9	A	Division Tac		
3N	TACTICAL	TAC 3	DIVISION:P	168.2500 N	110.9	168.2500 N	110.9	A	Division Tac		
4N	TACTICAL	TAC 4	DIVISION: Unassigned	166.7750 N	110.9	166.7750 N	110.9	A	Unassigned		
5N	COMMAND	BLM FLOUNCE	All Branches	172.4500 N	None	166.3500 N	100.0	A	Command to ICP <b>talks to RVICC dispatch</b>		
6N	COMMAND	USFS Rustler High Cascades	All Branches	169.5750 N	67.0	164.8750 N	79.7	A	Command to ICP <b>talks to RVICC dispatch</b>		
7N	COMMAND	USFS Robinson High Cascades	All Branches	169.5750 N	67.0	164.8750 N	91.5	A	Command to ICP <b>talks to RVICC dispatch</b>		
8N	COMMAND	USFS Dutchman Siskiyou Mtns	All Branches	169.9750 N	67.0	164.9375 N	118.8	A	Command to ICP <b>talks to RVICC dispatch</b>		
9N	TACTICAL	RSF TAC	USFS TAC	167.4250 N	67.0	167.4250 N	67.0	A	Forest Tac		
10N	AIR to GROUND	A/G 1	Worthington Secondary	167.0750 N	None	167.0750 N	None	A	For Aircraft contact		
11N	ODF FLOUNCE	RPTR	ODF FLOUNCE	151.1750 N	None	159.4125	173.8	A	MEFORD ODF State RPTR		
12N	ODF ROXY	RPTR	ODF ROXY	151.1750 N	None	159.4125	179.9	A	MEFORD ODF State RPTR		
13N	ODF RED	ODF RED	ODF RED TAC	151.3400 N	None	151.3400 N	156.7	A	MEFORD ODF State TAC		
14N	ODF WHITE	ODF WHITE	ODF WHITE TAC	151.3100 N	None	151.3100 N	156.7	A	MEFORD ODF State TAC		
15N	TACTICAL	RV TAC 2	CNTY TAC	159.2400 N	156.7	159.2400 N	156.7	A	CNTY tactical		
16N	EMERGENCY	AIRGUARD	All Divisions	168.6250 N		168.6250 N	110.9	A	Urgent Aircraft Contact (16CH.HT)		
5. Prepared by Dennis Brigante, COML					Incident Location Fire Latitude                      Longitude						

The convention calls for frequency lists to show four digits after the decimal place, followed by either an “N” or a “W” depending on whether the frequency is narrow or wide band.

**Make Sure Squelch Knob is turned all the way to the left, so it clicks. This is to activate the RX tone Guard. Or you will hear all radio traffic from all areas.**

**Worthington Fire  
SWO IMT3 Phone List**

Name	Position	Cell
Brumm, Joel	Public Information	541-200-4485
Crawford, Mike	Plans (T)	458-212-0501
Ferguson, Don	Public Information	541-778-2679
Hackett, Mike	Safety	541-531-7081
Hawkinson, Colby	Liaison (COVID/hospital)	541-727-8437
Houk, John	Deputy Logistics	775-815-8577
<b>Jesse Kiene</b>	<b>IC (T)</b>	<b>541-531-5568</b>
Johnson, Ruth	Plans	541-591-0920
Knighton, Lynda	Ordering	541-821-7119
Lane, Michelle	Finance	801-682-6717
<b>McCann, Mike</b>	<b>IC</b>	<b>530-249-1694</b>
Stephens, Shane	Ground Support	541-890-5540
Wallace, Trevor	Operations	541-973-8738
Wedekind, Cindy	Logistics	541-450-1136
Worman, Aaron	Lead READ	541-951-6429

## Plans

Fillable forms – time and performance evaluations (click the link, or scan the code): [fillable forms](#)



Adobe Reader DC on your mobile device is required to use fillable PDF forms. Must have adobe reader on your smart device in order to utilize.

Adobe Reader is free and available here: <https://get.adobe.com/reader/>

---

## Demob

1. **Ground Support:** Complete vehicle inspection if not selecting “no damages/no claim” in box 11 on the OF-296 (contractors).
2. **Weed wash:** Complete weed wash, they will ask for your resource order number and let demob know when you have completed.
3. **Finance:** Close out time with finance.
4. **Plans:**
  - a. Performance evaluations: Available in forms (above). Please complete (if applicable) and email to [2020.worthington.plans@firenet.gov](mailto:2020.worthington.plans@firenet.gov). In the subject line, please include your resource number (example: E-12 performance)
  - b. Send any unit logs or other documentation (if applicable) to [2020.worthington.plans@firenet.gov](mailto:2020.worthington.plans@firenet.gov) with your resource number in the subject line.
  - c. **Call demob 541-816-0454 to finalize you check out.** You will not be officially released from the incident until you call.

DEMOMB 8/4/20			
Strike Team / Task Force / Resource Designator		Leader	Time
C-12 HC2	GE Forestry	Hugo Champarlo	800
E-9 WT	Allied Water		800
C-26 HC2	Earth Industries llc	Javier Ramos	830
E-15 ENG6	North Pacific Forestry	Blair Campbell	830
E-13 ENG6	Wapati	Aaron Pate	900
E-14 ENG6	Wapati	Mike Molton	900

## Resource Protection for BLM –

### Worthington Fire

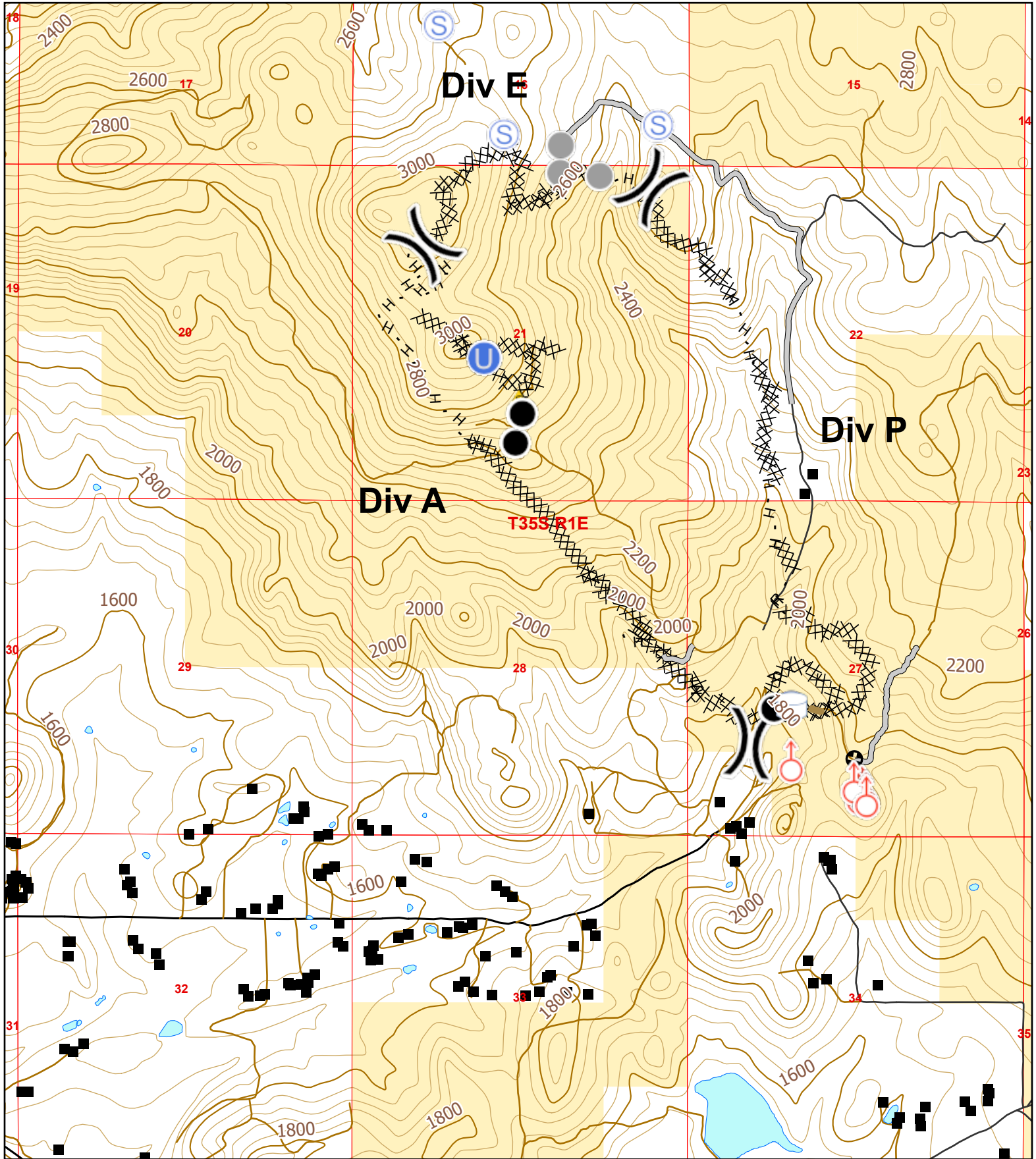
**Our objective is to put the fires out while minimizing damage to habitats for Threatened and Endangered Species**

***Work with the BLM Lead READ and REAFs to identify the locations of the concerns below:***

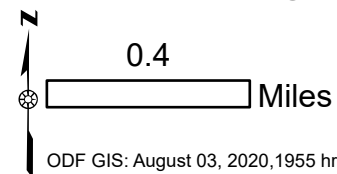
- Notify resource advisor if cultural resources are encountered. Leave all artifacts in place, and provide GPS coordinates for locations.
- Avoid application of chemical retardant, foam, or other chemicals within 300 ft. of waterways.
- Maintain and refuel equipment (e.g., drip torches and chainsaws) a minimum of 100 feet from waterbodies, floodplains, and wetlands. Portable pumps can be refueled on-site within a spill containment system.
- Draft water only at approved designated draft sites; use 3/32<sup>nd</sup> screen mesh on foot valves when drafting
- Avoid bucking logs that extend into the stream channel during all operations.
- Avoid dozer line in wet areas, meadows, very rocky, steep terrain, or trails. Locate fire lines to minimize directing water into waterbodies, wetlands, headwalls, or areas of instability. Avoid line construction parallel to streams.
- Fall snags or trees only when they pose a definite threat to the containment of the fire or the safety of fire fighters or other fire line personnel. If snags must be felled, buck felled trees into the longest pieces possible (>20 feet desired); in Riparian areas fall snags toward stream channel.
- Minimize the use of heavy equipment (dozers, tractors, excavators, skid steers etc.) within 200' of known avian wildlife nest sites (e.g. Northern Spotted Owl) and within 100' of plant sites.
- Remove dirt and vegetation from heavy equipment and attachments (augers, scoops and blades, etc...) to prevent the spread of noxious weeds.

# Worthington

Aug 4, 2020 Day Shift



Perimeter as of 8/3/20 @ 1800 hrs



ODF GIS: August 03, 2020, 1955 hrs

- |   |                           |                  |                           |
|---|---------------------------|------------------|---------------------------|
| — Paved Road                            | Waterbodies               | ▲ Safety Zone    | ⊗ Completed Dozer Line    |
| — All-Weather Road                      | Ⓟ Pump                    | ⚡ Spot Fire      | H Completed Hand Line     |
| — Dirt Road                             | Ⓛ Water Tank              | Ⓢ Staging Area   | R Road as Completed Line  |
| United States Bureau of Land Management | ● Drop Point              | ● Other          | — Access or Improved Road |
| ■ Structures                            | Ⓛ Unimproved Landing Area | ⌘ Division Break | — Repair Line             |
|   |                           | ⊕ Other          |                           |

Download Maps Here









# MEDICAL PLAN (ICS 206 WF)

1. Incident/Project Name		2. Operational Period		Day/Night				
<b>Worthington Fire</b>		Date/Time	8/4/2020	Day/night				
3. Ambulance Services								
Name	Location	Phone & EMS Frequency	Advanced Life Support (ALS) Yes      No					
Mercy flight	2020 Milligan Way, Medford	541-779-6551 (911)						
Jackson County 911		911						
4. Air Ambulance Services								
Name	Phone	Type of Aircraft & Capability						
Mercy Flights Air & Ground	541-779-6551	Contact Rogue Dispatch to order a Medivac						
		Mercy 105 Bell 407 No Hoist						
Jackson County 911	911							
5. Hospitals								
Name & Level	GPS Datum – WGS 84 Degrees Decimal Minutes		Travel Time Air      Gnd		Phone	Helipad Yes      No	Address	
Rogue Valley Medical Center <b>Trauma Yes Level 2</b>	Lat:	N42°19.07'		30 min	45 min	541-608-4144 541-608-4900	X	2825 E. Barnett Road  Medford, OR
	Long:	W122° 49.90'						
	VHF:							
Providence Medical Center <b>Trauma Yes Level 2</b>	Lat:	N42°20.33'		30 min	45 min	541-732-5059 541-732-5000	X	1111 Crater Lake Ave.  Medford, OR
	Long:	W122° 51.77'						
	VHF:							
Legacy Emanuel Hospital <b>Trauma Yes Level 1</b>	Lat:	N45° 32.66'		2 Hr	4 Hr	503-413-2200	X	2801 Gantenbein Ave.  Portland, OR
	Long:	W122° 40.18'						
	VHF:							
	Lat:							
	Long:							
	VHF:							
6. Division / Crew Pre-plan. Update daily								
<b>A</b>		Heli Spot DIV Break between A/P Lat. N42°29.795' / Long. W122° 41.582'						
		Heli Spot Meadow DP Lat. N42°30.563' / Long. W122° 42.460'						
<b>E</b>		Heli Spot Lat. N42°31.298' / Long. W122° 42.292'						
<b>P</b>		Heli Spot Lat. N42°30.620' / Long. W122° 41.610'						
7. Remote Aid Stations								
		Point of Contact:						
		EMS Responders & Capability:						
		Equipment Available on Site:						
		Ambulance ETA :						
8. Prepared By (Medical Unit Leader)			9. Date/Time		10. Reviewed By (Safety Officer)		11. Date/Time	
Ruth Johnson			8/3/2020 08:00		/S/ Michael Hackett		8/3/2020 08:30	

# MEDICAL PLAN (ICS 206 WF)

## Medical Incident Report

**1. CONTACT COMMUNICATIONS DECLARE: "MEDICAL EMERGENCY" OR "NON-EMERGENCY MEDICAL TRANSPORT"**

*Ex: "Communications, Div. Alpha. Stand-by for a medical emergency on Div. Alpha" (If life threatening request designated frequency be cleared for emergency traffic.)*

**2. INCIDENT STATUS:**

Provide incident summary (including number of patients) and command structure. *Ex: "Communications, I have a Red priority patient, unconscious, struck by a falling tree. Requesting air ambulance to Forest Road 1 at (Lat. / Long.) This will be the Trout Meadow Medical, IC is TFLD Jones. EMT Smith is providing medical care."*

**SEVERITY**
**TRANSPORT PRIORITY**
 **URGENT-RED Life threatening injury or illness.**

*Ex: Unconscious, difficulty breathing, bleeding severely, 2° – 3° burns more than 4 palm sizes, heat stroke, disoriented.*

Ambulance or MEDEVAC helicopter. Evacuation need is **IMMEDIATE.**

 **PRIORITY-YELLOW Serious Injury or illness.**

*Ex: Significant trauma, not able to walk, 2° – 3° burns not more than 1-2 palm sizes.*

Ambulance or consider air transport if at remote location. Evacuation may be **DELAYED.**

 **ROUTINE-GREEN**

Not a life threatening injury or illness. *Ex: Sprains, strains, minor heat-related illness.*

Non-Emergency. Evacuation considered **Routine of Convenience.**

**Nature of Injury or Illness & Mechanism of Injury**

*Brief Summary of Injury or Illness (Ex: Unconscious, Struck by Falling Tree)*

**Transport Request**

*Air Ambulance / Short-Haul/Hoist/ Ground Ambulance / Other*

**Patient Location**

*Descriptive Location & Lat. / Long. (WGS84)*

**Incident Name**

*Geographic Name + "Medical" (Ex: Trout Meadow Medical)*

**On-Scene Incident Commander**

*Name of on-scene IC of Incident within an Incident (Ex: TFLD Jones)*

**Patient Care**

*Name of Care Provider (Ex: EMT Smith)*

**3. INITIAL PATIENT ASSESSMENT:** Complete this section for each patient. Start with most severe.

**Patient Assessment: (See IRPG page 106)**

**Treatment:**

**4. TRANSPORT PLAN:**

**Evacuation Location** (if different): (Descriptive Location (drop point, intersection, etc.) or Lat. / Long.)

**Patient's ETA to Evacuation Location:**

**Helispot / Extraction Site Size and Hazards:**

**5. ADDITIONAL RESOURCE/EQUIPMENT NEEDS:**

- Paramedic/EMT(s)   
  SKED/Backboard/C-Collar   
  Crew(s)   
  Burn Supplies   
  Oxygen  
 Trauma Bag   
  Medication(s)   
  IV/Fluid(s)   
  Cardiac Monitor/AED  
 Other (i.e. splints, rope rescue, wheeled litter)

**6. COMMUNICATIONS:**
**7. CONTINGENCY:**

Considerations: If primary options fail, what actions can be implemented in conjunction with primary evacuation method? Be thinking ahead.

**8. ADDITIONAL INFORMATION:** Updates / Changes, etc.

**REMEMBER:** -Confirm ETA's of resources ordered    -Act according to your level of training  
 - If air or ground ambulance is DELAYED: Package and transport patient to rendezvous with incoming Ambulance.  
 Re-route EMS helicopter to rendezvous point as appropriate.