

# WORTHINGTON FIRE

## Incident Action Plan

Friday 8/7/20 - Saturday 8/8/20, 0600 - 0600

Medford District BLM and Southwest District ODF

OR-MED-000243

PD NCG5 (1502)



Worthington IAP



Check in (first day only)



Southwest Oregon IMT3



Worthington Maps

<b>Incident Objectives</b>	1. Incident Name Worthington Fire	Date Prepared 8/6/2020	Time Prepared 21:00
2. Operational Period (Date and Time) 8/7-8/2020 0600-0600			
3. Objective(s): <p>Maintain firefighter and public safety as the highest priority by assuring briefings and implementing mitigation measures to identified risks.</p> <p>Maintain COVID-19 mitigation procedures and follow established protocols to the extent feasible in order to minimize exposure and transmission to fire firefighters and communities.</p> <p>Maintain and build positive relationships with impacted landowners, utilities, public, and cooperating agencies.</p> <p>Avoid mechanized equipment disturbance of known cultural resources/arch sites.</p> <p>Protect tribal, cultural, archeological, and sensitive plant sites by coordinating with Resource Advisors.</p> <p>Provide for initial attack resources in coordination with southwest Oregon needs.</p>			
4. Operational Period Command Emphasis: <p>Maintain focus as we work through changing objectives on the incident. Maintain your situational awareness, mitigate hazards when you can safely do so and adjust tactics to avoid transfer of risk.</p>			
7. General Situation Awareness: <p>See spot weather forecast.</p>			
8. Attachments (check if attached) <ul style="list-style-type: none"> <li><input checked="" type="checkbox"/> Organization List (ICS 203)</li> <li><input checked="" type="checkbox"/> Assignment List (ICS 204)</li> <li><input checked="" type="checkbox"/> Communications Plan (ICS 205)</li> <li><input checked="" type="checkbox"/> Medical Plan (ICS 206)</li> <li><input checked="" type="checkbox"/> Incident Map</li> <li><input type="checkbox"/> Traffic Plan</li> <li><input checked="" type="checkbox"/> <u>medical 8 line</u></li> <li><input checked="" type="checkbox"/> <u>safety message</u></li> <li><input type="checkbox"/> _____</li> </ul>			
ICS-202	9. Prepared by (PSC) <i>Ruth Johnson</i>	10. Approved by (IC) <i>Mike McCann</i>	

ORGANIZATION ASSIGNMENT LIST			9. Operations Section	
1. Incident Name	Worthington Fire		Chief (day)	O-91 Trevor Wallace (LWD 8/15)
2. Date	8/6/20	3. Time 21:00	Chief	
4. Operational Period	8/7-8/2020	0600-0600	<b>a. Branch I - Division/Groups</b>	
<b>5. Incident Commander and Staff</b>			Division/Group A	O-98 Linda Gibson (LWD 8/10)
Incident Commander	O-135 Mike McCann (LWD 8/20)		Division/Group E	O-95 Eric Siemer (LWD 8/15)
	O-92 Jesse Kiene (T) (LWD 8/14)		Division/Group P	O-124 Nate Robinson (LWD 8/9)
Safety Officer	O-123 Mike Hackett (8/20)		Division/Group Night	
	O-86 Roger Beck (LWD 8/14)		Division/Group	
Information Officer	O-61 Don Ferguson (LWD 8/14)		Division/Group	
Liaison Officer - COVID	O-93 Colby Hawkinson (no check in)		<b>b. Branch II - Division/Groups</b>	
			Division/Group	
<b>6. Agency Representative</b>			Division/Group	
Agency	Name		Division/Group	
BLM	Jen Sanborn		Division/Group	
ODF	Dave Larson		Division/Group	
			<b>c. Branch III - Division/Groups</b>	
			Division/Group	
			Division/Group	
			Division/Group	
<b>7. Planning Section</b>			Division/Group	
Chief	O-134 Ruth Johnson (LWD 8/15)		<b>d. Branch IV Division/Groups</b>	
	O-88 Mike Crawford (T) (LWD 8/14)		Duty Officer	
Resource Unit			Division/Group	
Situation Unit			Division/Group	
Documentation Unit			Division/Group	
Demobilization Unit			Division/Group	
Technical Specialists			<b>e. Air Operations Branch</b>	
			Air Operations	
			Air Tactical Group Supervisor	
			Air Support Group Supervisor	
<b>8. Logistics Section</b>			<b>10. Finance Section</b>	
Chief	O-94 Cindy Wedekind (LWD 8/8)		Chief	O-117 Michelle Lane (LWD 8/14)
Deputy	O-76 John Houk (LWD 8/10)		Deputy	
Base Camp Manager	O-113 Tom Hawkins (LWD 8/16)		Time Unit	O-127 Lori Price (LWD 8/18)
Supply Unit			Cost Unit	O-89 Kathleen High (LWD 8/16)
Facilities Unit			Procurement Unit	
Ground Support Unit	O-102 Shane Stephens (LWD 8/17)		Incident Contract Project Insp	O-71 Tom Taylor (LWD 8/8)
Support Branch Dir.				
Medical Unit	O-59 Rodney Schmidt (LWD 8/17)			
Security	O-68 Bobby Semblante (LWD 8/9)		Prepared by (Resource Unit Leader)	
			<i>Ruth Johnson</i>	

**Worthington Fire**  
National Weather Service Medford  
2020-08-06 4:33 PM PDT

Spot Forecast for Worthington Fire...BLM  
National Weather Service Medford OR 432 PM PDT Thu Aug 6 2020

Forecast is based on forecast start time of 1600 PDT on August 06. If conditions become unrepresentative...contact the National Weather Service.

**.DISCUSSION...**Conditions tomorrow will be somewhat different than they were for today. The overnight period will be favorable with great humidity recovery, low winds, and low mixing heights. A warming and drying trend will begin tomorrow. Temperatures will be several degrees warmer, and humidities will be around 10 to 15 percent drier. Humidity recoveries will continue to worsen each night, yet still remain in the good category. The warming and drying trend will peak on Sunday with the hottest and driest day occurring then. Winds on Friday will be similar to what occurred yesterday, but should increase in speed on Saturday. No thunderstorms are in the forecast for the burn site through at least Tuesday.

**.FRIDAY...**

Sky/weather.....Sunny.  
Max temperature.....82 to 84 degrees.  
Min humidity.....32 to 37 percent.  
Eye level winds.....Downslope 0 to 1 mph in the morning becoming upslope/west 1 to 3 mph in the afternoon.  
Wind (20 ft).....Downslope 0 to 2 mph becoming upslope/west 3 to 5 mph in the afternoon.  
CWR.....0 percent.  
LAL.....1.  
Mixing height.....Near the surface increasing to 4000 ft AGL late in the morning.  
Mixing winds.....North around 5 mph.

**.FRIDAY NIGHT...**

Sky/weather.....Clear.  
Min temperature.....51 to 53 degrees.  
Max humidity.....82 to 87 percent.  
Eye level winds.....Upslope 1 to 3 mph in the evening becoming downslope 0 to 2 mph after midnight.  
Wind (20 ft).....Upslope/West 5 to 7 mph in the evening becoming downslope 1 to 3 mph.  
CWR.....0 percent.  
LAL.....1.  
Mixing height.....5000 ft AGL decreasing to the surface shortly after sunset.  
Mixing winds.....North around 6 mph.

**.SATURDAY...**

Sky/weather.....Sunny.  
Max temperature.....82 to 84 degrees.  
Min humidity.....28 to 33 percent.  
Eye level winds.....Downslope 0 to 1 mph in the morning becoming upslope/west 2 to 4 mph in the afternoon.  
Wind (20 ft).....Downslope 0 to 2 mph becoming upslope/west 5-7 mph in the afternoon.  
CWR.....0 percent.  
LAL.....1.  
Mixing height.....Near the surface increasing to 5300 ft AGL late in the morning.  
Mixing winds.....North around 5 mph.

Forecaster...SCHAAF



DIVISION ASSIGNMENT LIST		1. Branch		2. Division Group E	
3. Incident Name <b>Worthington Fire</b>		4. Operational Period <b>8/7-8/2020 0600-2000</b>			
5. <b>Operations Personnel</b>					
Operations Chief	<b>O-91 Trevor Wallace</b>		Division/Group Supervisor	<b>O-95 Eric Siemer (LWD 8/15)</b>	
Branch Director			Air Attack Supervisor		
6. <b>Resources Assigned This Period</b>					
Strike Team / Task Force / Resource Designator		Leader		Number persons	LWD
C-16 HC2	Ponderosa Reforestation	Jose Contreros		20	8/13
C-24 HC2	Mp Forestry Inc	Raul Moreno		20	8/14
C-25 HC2	Ge Forestry Inc	Gorgonio Ibarra		20	8/14
E-42 ENG6	Parker Excavation	James Duggins		2	8/13
E-24 WT	Brierville	Mike Hanson		1	8/13
E-30 DOZ	DC Fire	Shad Vaughan		2	8/13
*O-83 TFLD		Tumasi Ross		1	8/8
O-82 TFLD(T)		Collin O'Brien		1	8/15
O-106 REAF		Aaron Worman		1	8/15
REAF		Corey Parks		1	
O-99 EMPF	EMPF	Kyle Meade		1	8/15
7. Control Operations					
Continue to secure fire's edge. Mop up 100 feet in from fire's edge.					
8. Special Instructions					
*Resource designated for initial attack contingency.					
9. <b>Division/Group Communications Summary</b>					
Function	Frequency – RX / tone	Frequency – TX / tone	Channel	Channel Name	
Command					
Tactical Div/Group	see communications plan				
Air to Ground					
Prepared by (Resource Unit Leader)		Approved by (Planning Section Chief)		Date Prepared	Time
		<i>Ruth Johnson</i>		8/6/2020	21:00

DIVISION ASSIGNMENT LIST		1. Branch	2. Division Group P	
3. Incident Name <b>Worthington Fire</b>		4. Operational Period <b>8/7-8/2020 0600-2000</b>		
5. <b>Operations Personnel</b>				
Operations Chief	<b>O-91 Trevor Wallace</b>		Division/Group Supervisor	<b>O-124 Nate Robinson (LWD 8/9)</b>
Branch Director			Air Attack Supervisor	
6. <b>Resources Assigned This Period</b>				
Strike Team / Task Force / Resource Designator		Leader	Number persons	LWD
C-18 HC2	North Pacific Forestry	Jose Cicisneros	20	8/13
*C-19 HC2	North Pacific Forestry	Anderson	20	8/13
C-20 HC2	North Pacific Forestry	Jose Perez	20	8/13
*E-28 ENG3	JMJ	Steve Haddix	2	8/13
E-8 ENG6	Knightfire	Kevin Knight	2	8/13
*E-16 ENG6	North Pacific Forestry	Tim Teel	2	8/14
E-5 ENG6	JCCJ	Levi Caster	5	8/13
*E-32 DOZ	Applegate Excavation	Sebastian	2	8/13
*E-44 WT	Rogue Basin Fire Service	Matt Jordan	1	8/14
*E-55 WT	Able Service	Jeremy Smith	1	8/16
O-21 FMOD	Wapati	Tom O'Donnell	2	8/13
O-81 TFLD		Cody Bates	1	8/15
O-104 REAF		Stacy Johnson	1	8/15
O-100 EMPF	Wilderness Medic	Ashley Short	1	8/16
O-101 EMTP	Wilderness Medic	Mark Bressey	1	8/16
7. Control Operations				
Patrol all containment lines. Mop up as needed.				
8. Special Instructions				
*Resource designated for initial attack contingency.				
9. <b>Division/Group Communications Summary</b>				
Function	Frequency – RX / tone	Frequency – TX / tone	Channel	Channel Name
Command				
Tactical Div/Group	see communications plan			
Air to Ground				
Prepared by (Resource Unit Leader)		Approved by (Planning Section Chief)		Date Prepared
		<i>Ruth Johnson</i>		8/6/2020
				Time
				21:00





# AIR OPERATIONS SUMMARY

Prepared By: Mike DeMello

Prepared Date: 08/05/20

Prepared Time: 1200

<b>1. INCIDENT NAME:</b> Worthington Fire	<b>2. OPS PERIOD DATE:</b> 08/07/20	<b>START TIME:</b> 0800	<b>END TIME:</b> 2000	<b>SUNRISE:</b> 0608	<b>SUNSET:</b> 2025
<b>3. REMARKS (Safety Notes, Hazards, and Air Operations Special Equipment, etc.):</b>  HIGH HOT HEAVY CONDITIONS, SMOKE, HIGH WINDS, TURBULENCE. FOLLOW WIND LIMITATION PROTOCOLS WHEN CONDUCTING AIR OPERATIONS. PLEASE CHECK NOTAMS  Please Send all Aircraft costs to orrvcc@firenet.gov			<b>4. READY ALERT AIRCRAFT</b>  MEDEVAC: Any Available		<b>5. TFR #:</b> Worthington Fire N42 29.02 W122 42.82 3M Radius 7,000msl

6. PERSONNEL	NAME	PHONE #	7. FREQUENCIES	AM	FM	8. FIXED-WING- Type/ Make-Model/ N#/ Base
UAO	Mike DeMello	541/ 324-0876	A/A Primary	127.000		AIRTANKERS --- Order through RVICC
Medford ATB	Justin Bohannan	479/ 200-0818	Air to Ground	167.0750	167.0750	LEAD PLANES -- Order through RVICC
Medford VLAT	Bo Bohannan	479/ 981-9123	National FF	168.650 R+ 110.9	168.650 T+ 110.9	AERIAL SUPERVISION - Order through RVICC
Fixed Wing-ATGS	Contact RVICC for Availability		Local FF	166.7875 R+ 67.0	166.7875 T+ 67.0	Tanker Base Main Line —541/ 779-0397
Siskiyou Helibase Manager	Matt Schutty	406/ 360-3758	Air Guard	168.625	168.625 T+ 110.9	UAS Pilot -- Steve Rameakers 208/ 473-8708
2WM Manager	Alex Voshell	208/ 602-9602				
8AC Manager	Corey Favorite	530/ 867-4711	Medford Tanker Base	123.975		

## 9. HELICOPTERS

FAA N#	TY	MAKE/ MODEL	BASE	START	AVAIL	REMARKS	FAA N#	TY	MAKE/ MODEL	BASE	START	AVAIL	REMARKS
N178AC	1	S-64	KMFR	0800	0900	Contact RVICC for Availability	AA-305	1	AC-90	KMFR	0800	0900	Contact RVICC for Availability
N202WM	2	KMAX	K3S8	0800	0900	Contact RVICC for Availability	AA-610	1	AC-90	KMFR	0800	0900	Contact RVICC for Availability
S260		CL415	KEUG	0800	0900	Contact RVICC for Availability	N28HX	2	Bell 205++	KMFR	0800	0900	Contact RVICC for Availability
S263		CL415	KEUG	0800	0900	Contact RVICC for Availability							

<b>10. TASK/ MISSION/ ASSIGNMENT (Type/ function includes: Air Tactical, Retardant, Recon, Personnel Transport, Bucket Operations, SAR, etc.</b>				
<b>TYPE/FUNCTION</b>	<b>NAME OF PERSONNEL OR CARGO (If applicable) or instructions for tactical aircraft</b>	<b>MISSION START</b>	<b>FLY FROM</b>	<b>FLY TO</b>
Recon	As Requested	As Requested	Any Location	Fire
Bucket Support	As Requested	As Requested	Any Location	Fire
Troop Transport	As Requested	As Requested	Any Location	Fire
Aerial Supervision	As Requested	As Requested	Medford or Ashland	Fire
UAS	As Requested	As Requested	Any Location	Fire
Supply Missions	As Requested	As Requested	Any Location	Fire

**NOTES: Please advise RVICC if any planned UAS Flights are going to be conducted either day or night, so we can de-conflict with all the units including the Medford Airport Tower.**

# Worthington Fire

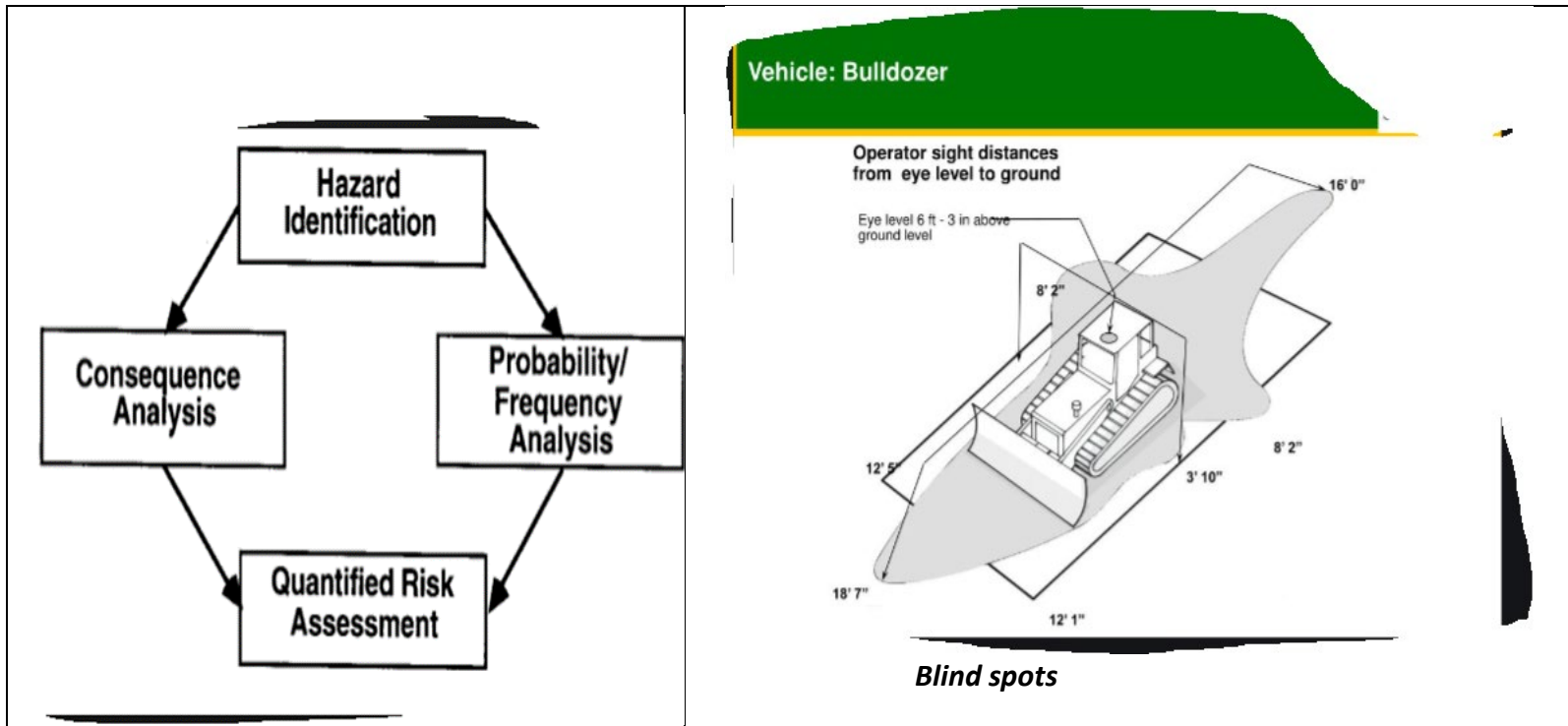
August 7, 2020

## Safety Message

### Working around equipment

Identify subjective or objective hazards of working in the vicinity of or associated with:

- Dozer(s)
- Snags
- Other Engines and Vehicles
- Power lines
- WUI



### Safety Tips for working with Heavy machinery:

Each year over 20,000 workers are injured in work zones. An additional one hundred are fatalities. These are often a result of rollovers, back overs, collisions or fires. Of these incidents 35% are the result of contact with equipment. Many of these incidents could have been avoided by following simple safety measures.

1. Avoid Blind Spots
2. Maintain Constant Communication
3. Wear Seat Belts
4. Use the Three-Point Rule for Mounting and Dismounting
5. Load and Unload Safely
6. Do a Pre-Work Check for Hazards
7. Avoid Unexpected Start-Up
8. Know and Obey Load Limits
9. Conduct a Daily Inspection
10. Recognize Your Physical and Emotional Limits

### Working with Heavy Equipment:

- When working around heavy equipment stay at least 100 feet in front and 50 feet behind the equipment.
- No one but the operator should ride on the equipment.
- Never approach equipment until you have eye contact with the operator, all implements have been lowered to the ground, and equipment is idled down.
  - Avoid working below equipment where rolling material could jeopardize your safety.
  - Establish visual and radio communication methods prior to engaging.
  - Communicate all hazards to the operator (spot fires, firing operations, and obstacles).
  - Equipment operators have difficulty seeing ground personnel.

Safety Officer: Mike Hackett

INCIDENT RADIO COMMUNICATIONS PLAN			Incident Name <b>Worthington Fire</b>			Date/Time Prepared 8/4/2020 1800			Operational Period Date/Time 8/07/2020 Thursday 24 hour		
Only frequencies listed on this 205 are authorized for use on this incident.											
Ch #	Function	Channel Name/Trunked Radio System Talk-group	Assignment	RX Freq N or W	RX Tone	TX Freq N or W	Tx Tone	Mode	Remarks		
1N	TACTICAL	TAC 1	DIVISION: A	168.2000 N	110.9	168.2000 N	110.9	A	Division Tac		
2N	TACTICAL	TAC 2	DIVISION: E	166.7250 N	110.9	166.7250 N	110.9	A	Division Tac		
3N	TACTICAL	TAC 3	DIVISION:P	168.2500 N	110.9	168.2500 N	110.9	A	Division Tac		
4N	TACTICAL	TAC 4	DIVISION: Unassigned	166.7750 N	110.9	166.7750 N	110.9	A	Unassigned		
5N	COMMAND	BLM FLOUNCE	All Branches	172.4500 N	None	166.3500 N	100.0	A	Command to ICP <b>talks to RVICC dispatch</b>		
6N	COMMAND	USFS Rustler High Cascades	All Branches	169.5750 N	67.0	164.8750 N	79.7	A	Command to ICP <b>talks to RVICC dispatch</b>		
7N	COMMAND	USFS Robinson High Cascades	All Branches	169.5750 N	67.0	164.8750 N	91.5	A	Command to ICP <b>talks to RVICC dispatch</b>		
8N	COMMAND	USFS Dutchman Siskiyou Mtns	All Branches	169.9750 N	67.0	164.9375 N	118.8	A	Command to ICP <b>talks to RVICC dispatch</b>		
9N	TACTICAL	RSF TAC	USFS TAC	167.4250 N	67.0	167.4250 N	67.0	A	Forest Tac		
10N	AIR to GROUND	A/G 1	Worthington Secondary	167.0750 N	None	167.0750 N	None	A	For Aircraft contact		
11N	ODF FLOUNCE	RPTR	ODF FLOUNCE	151.1750 N	None	159.4125	173.8	A	MEFORD ODF State RPTR		
12N	ODF ROXY	RPTR	ODF ROXY	151.1750 N	None	159.4125	179.9	A	MEFORD ODF State RPTR		
13N	ODF RED	ODF RED	ODF RED TAC	151.3400 N	None	151.3400 N	156.7	A	MEFORD ODF State TAC		
14N	ODF WHITE	ODF WHITE	ODF WHITE TAC	151.3100 N	None	151.3100 N	156.7	A	MEFORD ODF State TAC		
15N	TACTICAL	RV TAC 2	CNTY TAC	159.2400 N	156.7	159.2400 N	156.7	A	CNTY tactical		
16N	EMERGENCY	AIRGUARD	All Divisions	168.6250 N		168.6250 N	110.9	A	Urgent Aircraft Contact (16CH.HT)		
5. Prepared by Dennis Brigante, COML			Incident Location Fire Latitude                      Longitude								

The convention calls for frequency lists to show four digits after the decimal place, followed by either an “N” or a “W” depending on whether the frequency is narrow or wide band.

**Make Sure Squelch Knob is turned all the way to the left, so it clicks. This is to activate the RX tone Guard. Or you will hear all radio traffic from all areas.**

## Worthington Fire SWO IMT3 Phone List

Name	Position	Cell
Brumm, Joel	Public Information	541-200-4485
Crawford, Mike	Plans (T)	458-212-0501
Ferguson, Don	Public Information	541-778-2679
Hackett, Mike	Safety	541-531-7081
Hawkinson, Colby	Liaison (COVID/hospital)	541-727-8437
Houk, John	Deputy Logistics	775-815-8577
<b>Jesse Kiene</b>	<b>IC (T)</b>	<b>541-531-5568</b>
Johnson, Ruth	Plans	541-591-0920
Knighton, Lynda	Ordering	541-821-7119
Lane, Michelle	Finance	801-682-6717
<b>McCann, Mike</b>	<b>IC</b>	<b>530-249-1694</b>
Stephens, Shane	Ground Support	541-890-5540
Wallace, Trevor	Operations	541-450-1133
Wedekind, Cindy	Logistics	541-450-1136
Worman, Aaron	Lead READ	541-951-6429
	Demob/check-in	541816-0454



### See Finance

C-9 MED Crew 10  
C-19 N.Pacific  
C-20 N.Pacific

E-16 N.Pacific  
E-28 JMJ  
E-55 Able

O-20 Wapati  
O-21 Wapati  
O-100 Wilderness Medic  
O-101 Wilderness Medic

## Plans

Fillable forms – time and performance evaluations (click the link, or scan the code): [fillable forms](#)



Adobe Reader DC on your mobile device is required to use fillable PDF forms. Must have adobe reader on your smart device in order to utilize.

Adobe Reader is free and available here: <https://get.adobe.com/reader/>

---

## Demob

1. **Ground Support:** Complete vehicle inspection if not selecting “no damages/no claim” in box 11 on the OF-296 (contractors).
2. **Weed wash:** Complete weed wash, they will ask for your resource order number and let demob know when you have completed.
3. **Finance:** Close out time with finance.
4. **Plans:**
  - a. Performance evaluations: Available in forms (above). Please complete (if applicable) and email to [2020.worthington.plans@firenet.gov](mailto:2020.worthington.plans@firenet.gov). In the subject line, please include your resource number (example: E-12 performance)
  - b. Send any unit logs or other documentation (if applicable) to [2020.worthington.plans@firenet.gov](mailto:2020.worthington.plans@firenet.gov) with your resource number in the subject line.
  - c. **Call demob 541-816-0454 to finalize you check out.** You will not be officially released from the incident until you call.

DEMOB 8/6/20			
Strike Team / Task Force / Resource Designator		Leader	Time
O-84 TFLD		Andy Murrin	0645
E-21 WT	Absolut Water	William Hogue	0645
E-23 WT	Rogue Fire Logistics	Issac Farras	0715
E-31 DOZ	Valley Timber Resources	Greg Nelson	0745
E-57	Skidgine	Dan Chanler	0645
DEMOB 8/8/20			
E-27 ENG3	JMJ	John Giordano	1200
E-29 ENG4	JMJ	Jesse Reigard	1200

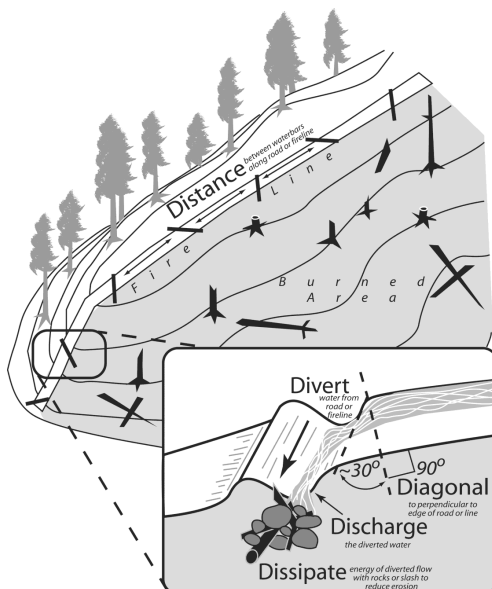
## Mop-up Standards for BLM Lands – Worthington Fire, Medford District BLM

The intent of mop up is to make the likelihood of the fire escaping the containment perimeter very unlikely through the rest of the fire season or onset of significant rains. Mop up will be implemented to the degree and location necessary to meet the above intent.

- The Bureau of Land Management's approach to mop-up, in order to minimize unnecessary exposure to firefighters, is not to specify a distance or percentage "standard." There may be parts of the fire that are too dangerous for *any* mop-up (e.g., snag patches, extremely steep/rocky terrain).
- To reduce hazards during mop-up, fall intermittent snags that pose "imminent" danger to firefighters (ref. **Field Guide for Danger Tree Identification and Response**, RG-NR-FP-PR-01-08). Avoid bucking of logs when possible in an effort to keep whole trees in long segments. This fire is extremely rocky in places. Watch for rock and log roll out.
- Spot fires outside the control lines will be mopped up commensurate with exposure and values. The perimeter of spots will be mapped in GIS.
- Mop-up of partially burned areas further inside the lines **will be the exception** and determined on a case-by-case basis by the READ, Safety Officer and Operations depending on the specific values at risk.
- As mop-up specifications are met on a Division, Operations will develop a plan for the resources and equipment to be left in place that may be required for future contingency actions.
- Use the water bar spacing guide along with the diagram and specification below for proper water bar installation.

**Water Bar Guidelines (Hand and Dozer Lines)**

Fire Line Slope %	Maximum Water Bar Spacing (feet)
2-5	300
6-10	200
11-15	150
16-20	100
21-35	75
36+	50

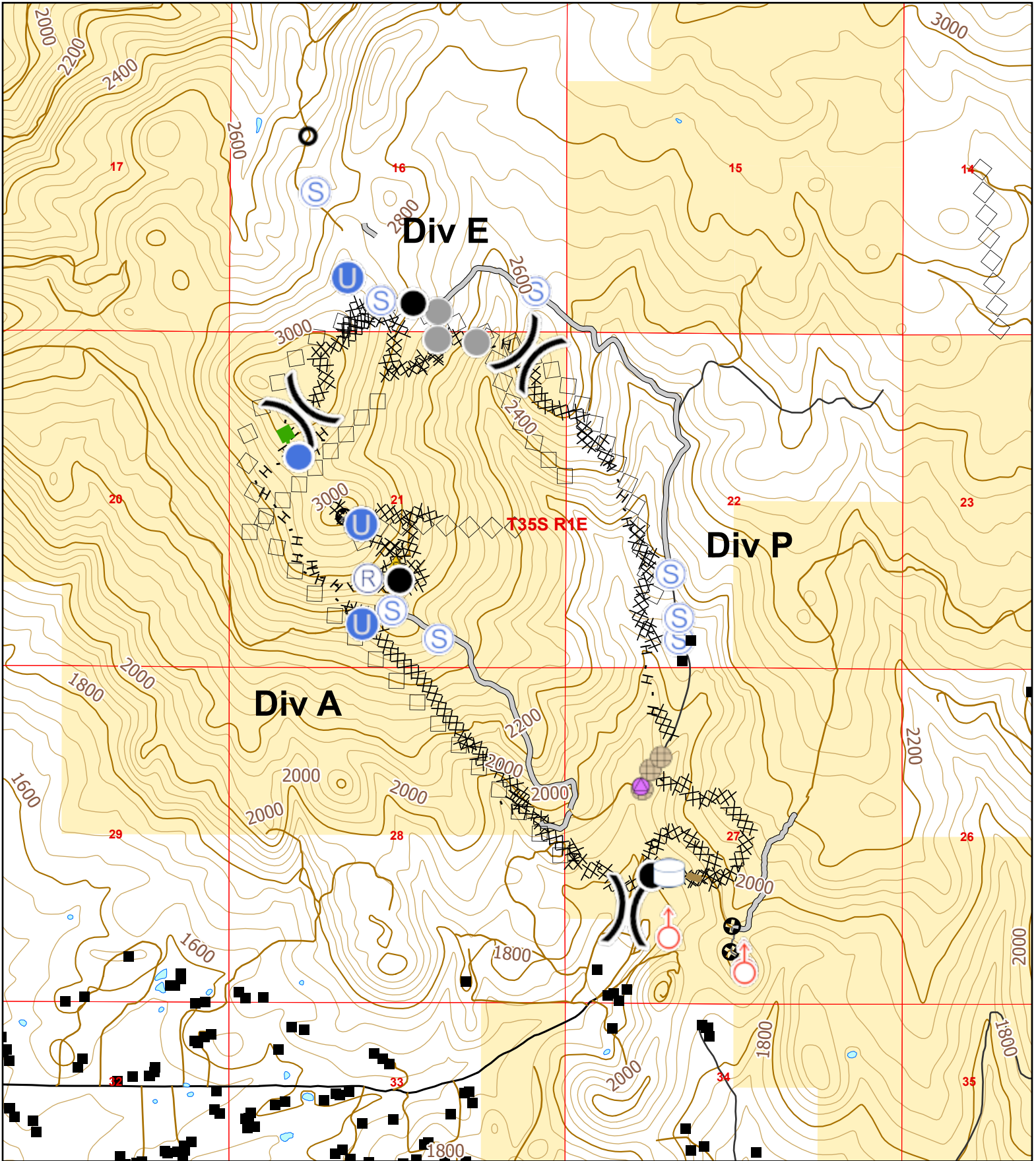


- Cut in the water bar – do not simply push up loose soil.
- Water bars should direct runoff AWAY FROM the burned area where possible.

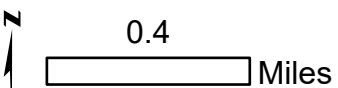


# Worthington

Aug 6, 2020 Day Shift



Perimeter as of 8/3/20 @ 1800 hrs



Map Scale: 1:24,000  
ODF GIS: August 05, 2020, 1923 hrs

- |   |                           |                |                           |
|---|---------------------------|----------------|---------------------------|
| — Paved Road                              | ⊕ Pump                    | ● Helispot     | ⌘ Division Break          |
| — All-Weather Road                        | ⊕ Water Tank              | ● Repair Point | ⌘ Completed Dozer Line    |
| — Dirt Road                               | ⊕ Culvert                 | ⊕ Repeater     | H Completed Hand Line     |
| ■ United States Bureau of Land Management | ● Drop Point              | ▲ Safety Zone  | R Road as Completed Line  |
| ■ Structures                              | ● Fence - Cut/Damaged     | ⊕ Spot Fire    | — Access or Improved Road |
| ■ Waterbodies                             | ⊕ Unimproved Landing Area | ⊕ Staging Area | ◇ Aerial Retardant Drop   |
|   |                           | ● Other        |                           |

Download Maps Here









# MEDICAL PLAN (ICS 206 WF)

<b>1. Incident/Project Name</b>				<b>2. Shift</b>									
<b>Worthington Fire</b>				Date/Time <b>8/7/2020 Day Shift/Night Shift</b>									
<b>3. Ambulance Services</b>													
<b>Name</b>		<b>Location</b>		<b>Phone &amp; EMS Frequency</b>		<b>Advanced Life Support (ALS) Yes No</b>							
Mercy Flight Ground		2020 Milligan Way, Medford, OR		541-779-6551 (911)		X							
Jackson County 911				911									
<b>4. Air Ambulance Services</b>													
<b>Name</b>		<b>Phone</b>		<b>Type of Aircraft &amp; Capability</b>									
Mercy Flights Air		541-779-6551		Mercy 105 Bell 407 No Hoist Contact Rogue Dispatch to order a Medivac									
Jackson County 911		911											
<b>5. Hospitals</b>													
<b>Name &amp; Level</b>		<b>GPS Datum – WGS 84 Degrees Decimal Minutes</b>		<b>Travel Time Air Gnd</b>		<b>Phone</b>		<b>Helipad Yes No</b>		<b>Address</b>			
Rogue Valley Medical Center <b>Trauma Yes Level 2</b>		Lat:	N42°19.07'		30 min	45 min	541-789-7000	X		2825 E. Barnett Road Medford, OR			
		Long:	W122° 49.90'										
		VHF:											
Providence Medical Center <b>Trauma Yes Level 2</b>		Lat:	N42°20.33'		30 min	45 min	541-732-5000	X		1111 Crater Lake Ave. Medford, OR			
		Long:	W122° 51.77'										
		VHF:											
Legacy Emanuel Hospital <b>Trauma Yes Level 1</b>		Lat:	N45° 32.66'		2 Hr	4 Hr	503-413-2200	X		2801 Gantenbein Ave. Portland, OR			
		Long:	W122° 40.18'										
		VHF:											
		Lat:											
		Long:											
		VHF:											
<b>6. Division / Crew Pre-plan. Update daily</b>													
Mercy Flight Ambulance parked at DP 3 DIV Break between A/P													
A Heli Spot DIV Break between A/P Lat. N42°29.795' / Long. W122° 41.582'													
Heli Spot Meadow DP Lat. N42°30.563' / Long. W122° 42.460'													
E Heli Spot Lat. N42°31.298' / Long. W122° 42.292'													
P Heli Spot Lat. N42°30.620' / Long. W122° 41.610'													
<b>7. Line Medical Personnel</b>													
<b>Staged by DIVS</b>													
Div P: Ashley Short EMPF				ALS Equipment, Long board, AED									
Div P: Mark Bessey EMPF				ALS Equipment, Long board, AED									
Div A: Wes Feraccioli EMPF				ALS Equipment, Long board, AED									
Div E: Kyle Meade EMPF				ALS Equipment, Long board, AED, Mule Litter Carrier									
ICP: Rod Schmidt EMPF/MEDL				ALS Equipment									
<p><b>In an EMERGENCY contact Rouge Valley Dispatch on Channel 5 (BLM Flounce), Channel 6 (USFS Rustler), or call 541.618.2510.</b></p> <p><b>After hours Central Dispatch will answer the radio or call 911.</b></p>													
<b>8. Prepared By (Medical Unit Leader)</b>				<b>9. Date/Time</b>				<b>10. Reviewed By (Safety Officer)</b>				<b>11. Date/Time</b>	
/S/ Rodney Schmidt MEDL/EMPF 406.261.9541				8/6/2020 19:00				/S/ Michael Hackett				8/6/2020 19:00	

