



Worthington IAP



Worthington Maps

Worthington Fire

Incident Action Plan

Sunday 8/9/20 0600-2000

Medford District BLM and Southwest District ODF

OR-MED-000243

PD NCG5 (1502)



Southwest Oregon IMT3



Check in (first day only)

Incident Objectives	1. Incident Name Worthington Fire	Date Prepared 8/8/2020	Time Prepared 20:30
2. Operational Period (Date and Time) 8/9/2020 0600-2000			
3. Objective(s):			
Maintain firefighter and public safety as the highest priority by assuring briefings and implementing mitigation measures to identified risks.			
Maintain COVID-19 mitigation procedures and follow established protocols to the extent feasible in order to minimize exposure and transmission to fire firefighters and communities.			
Maintain and build positive relationships with impacted landowners, utilities, public, and cooperating agencies.			
Utilize the incident repair plan to safely and effectively complete repair objectives. Maintain strategic awareness on repair objectives between BLM and Private Lands. Identify any additional incident repair needs and report to the Resource Advisors.			
Restrict unnecessary/undesired motorized vehicle access on any roads or firelines created by fire suppression activities.			
Protect tribal, cultural, archeological, and sensitive plant sites by coordinating with Resource Advisors.			
Provide for initial attack resources in coordination with southwest Oregon needs.			
4. Operational Period Command Emphasis:			
Ensure repair objectives are clear and understood. Utilize the repair plan to identify repair needs and apply the appropriate tactics to complete the tasks. Work with the divisional READs/REAFs for the inspection of completed tasks.			
7. General Situation Awareness:			
See spot weather forecast.			
8. Attachments (check if attached)			
<input checked="" type="checkbox"/> Organization List (ICS 203) <input checked="" type="checkbox"/> Medical Plan (ICS 206) <input checked="" type="checkbox"/> <u>medical 8 line</u>			
<input checked="" type="checkbox"/> Assignment List (ICS 204) <input checked="" type="checkbox"/> Incident Map <input checked="" type="checkbox"/> <u>safety message</u>			
<input checked="" type="checkbox"/> Communications Plan (ICS 205) <input type="checkbox"/> Traffic Plan <input type="checkbox"/> _____			
ICS-202	9. Prepared by (PSC) <i>Ruth Johnson</i>	10. Approved by (IC) <i>Mike McCann</i>	

ORGANIZATION ASSIGNMENT LIST			9. Operations Section	
1. Incident Name	Worthington Fire		Chief (day)	O-91 Trevor Wallace (LWD 8/15)
2. Date	8/8/20	3. Time 20:30	Chief	
4. Operational Period	8/9/20	0600-2000	a. Branch I - Division/Groups	
5. Incident Commander and Staff			Division/Group A	O-98 Linda Gibson (LWD 8/10)
Incident Commander	O-135 Mike McCann (LWD 8/14)		Division/Group E	O-95 Eric Siemer (LWD 8/15)
	O-92 Jesse Kiene (T) (LWD 8/14)		Division/Group P	O-124 Nate Robinson (LWD 8/9)
Safety Officer	O-123 Mike Hackett (8/20)		Division/Group Night	
	O-86 Roger Beck (LWD 8/14)		Division/Group	
Information Officer	O-61 Don Ferguson (LWD 8/14)		Division/Group	
	O-64 Joel Brumm (T) (LWD 8/15)		b. Branch II - Division/Groups	
			Division/Group	
			Division/Group	
6. Agency Representative			Division/Group	
Agency	Name		Division/Group	
BLM	Jen Sanborn		Division/Group	
ODF	Dave Larson		c. Branch III - Division/Groups	
Lead READ	O-93 Colby Hawkinson (LWD 8/15)		Division/Group	
			Division/Group	
			Division/Group	
			Division/Group	
7. Planning Section			d. Branch IV Division/Groups	
Chief	O-134 Ruth Johnson (LWD 8/15)		Duty Officer	
	O-88 Mike Crawford (T) (LWD 8/14)		Division/Group	
Resource Unit			Division/Group	
Situation Unit			Division/Group	
Documentation Unit			Division/Group	
Demobilization Unit			e. Air Operations Branch	
Technical Specialists			Air Operations	
			Air Tactical Group Supervisor	
			Air Support Group Supervisor	
8. Logistics Section			10. Finance Section	
Chief	O-94 Cindy Wedekind (LWD 8/13)		Chief	O-117 Michelle Lane (LWD 8/14)
Deputy	O-76 John Houk (LWD 8/10)		Deputy	
Base Camp Manager	O-113 Tom Hawkins (LWD 8/16)		Time Unit	O-127 Lori Price (LWD 8/18)
Supply Unit			Cost Unit	O-89 Kathleen High (LWD 8/16)
Facilities Unit			Procurement Unit	
Ground Support Unit	O-102 Shane Stephens (LWD 8/17)		Incident Contract Project Insp	O-71 Tom Taylor (LWD 8/11)
Support Branch Dir.				
Medical Unit	O-59 Rodney Schmidt (LWD 8/17)			
Security	O-68 Bobby Semblante (LWD 8/9)		Prepared by (Resource Unit Leader)	
			<i>Ruth Johnson</i>	

Worthington Fire
National Weather Service Medford
2020-08-08 2:37 PM PDT

Spot Forecast for Worthington Fire...BLM
National Weather Service Medford OR
237 PM PDT Sat Aug 8 2020

Forecast is based on forecast start time of 0800 PDT on August 09. If conditions become unrepresentative...contact the National Weather Service.

.DISCUSSION...Daily afternoon upslope winds and overnight downslope winds will continue. Humidity recoveries will be moderate Sunday night and high temperatures will peak on Monday.

.SUNDAY...

Sky/weather.....Sunny.
Max temperature.....90 to 92.
Min humidity.....20 percent.
Eye level winds....Light winds becoming upslope around 4 mph in the afternoon.
Wind (20 ft).....Light winds becoming northwest 5 to 10 mph in the afternoon.
CWR.....0 percent.
LAL.....1.

.SUNDAY NIGHT...

Sky/weather.....Clear.
Min temperature.....Around 55.
Max humidity.....60 to 70 percent.
Eye level winds....Upslope 4 mph early becoming light downslope after 9 pm.
Wind (20 ft).....Northwest winds 5 to 10 mph in the evening becoming light.
CWR.....0 percent.
LAL.....1.

.MONDAY...

Sky/weather.....Sunny.
Max temperature.....95 to 97.
Min humidity.....17 to 19 percent.
Eye level winds....Light winds becoming upslope around 4 mph in the afternoon.
Wind (20 ft).....Light winds becoming northwest 5 to 10 mph in the afternoon.
CWR.....0 percent.
LAL.....1.

\$\$

Forecaster...SANDLER
Requested by...Mike Crawford
Type of request...WILDFIRE
.TAG 2010329.6/MFR
.DELDT 08/08/20

DIVISION ASSIGNMENT LIST		1. Branch	2. Division Group E	
3. Incident Name		Worthington Fire		4. Operational Period
				8/9/20 0600-2000
5. Operations Personnel				
Operations Chief	O-91 Trevor Wallace		Division/Group Supervisor	O-95 Eric Siemer (LWD 8/15)
Branch Director			Air Attack Supervisor	
6. Resources Assigned This Period				
Strike Team / Task Force / Resource Designator		Leader		Number persons LWD
C-16 HC2	Ponderosa Reforestation	Jose Contreros		20 8/13
C-25 HC2	Ge Forestry Inc	Gorgonio Ibarra		20 8/14
E-67 EXCA	Allied Water Services	Conor Wolfe		2 8/21
O-82 TFLD(T)		Collin O'Brien		1 8/15
O-137 REAF		Corey Parks		1 8/19
O-93 READ		Colby Hawkinson		1 8/15
O-104 REAF		Stacy Johnson		1 8/15
O-99 EMPF	EMPF	Kyle Meade		1 8/15
7. Control Operations				
Safely and efficiently conduct repair work on all interior lines.				
8. Special Instructions				
*Resource designated for initial attack contingency.				
9. Division/Group Communications Summary				
Function	Frequency – RX / tone	Frequency – TX / tone	Channel	Channel Name
Command				
Tactical Div/Group	see communications plan			
Air to Ground				
Prepared by (Resource Unit Leader)		Approved by (Planning Section Chief)		Date Prepared Time
		<i>Ruth Johnson</i>		8/8/2020 20:30

DIVISION ASSIGNMENT LIST		1. Branch		2. Division Group		P		
3. Incident Name			Worthington Fire		4. Operational Period		8/9/20 0600-2000	
5. Operations Personnel								
Operations Chief		O-91 Trevor Wallace		Division/Group Supervisor		O-124 Nate Robinson (LWD 8/9)		
Branch Director				Air Attack Supervisor				
6. Resources Assigned This Period								
Strike Team / Task Force / Resource Designator			Leader			Number persons	LWD	
C-18 HC2	North Pacific Forestry		Jose Cicisneros		20	8/13		
C-20 HC2	North Pacific Forestry		Jose Perez		20	8/13		
*E-28 ENG3	JMJ		Steve Haddix		2	8/13		
E-5 ENG6	JCCJ		Levi Caster		5	8/13		
*E-32 DOZ	Applegate Excavation		Sebastian		2	8/13		
E-68 EXCA	Pacific Ridgeline		Martin Miller		2	8/21		
*E-44 WT	Rogue Basin Fire Service		Matt Jordan		1	8/14		
O-80 TFLD			Toby White		1	8/16		
O-106 REAF			Aaron Worman		1	8/15		
O-100 EMPF	Wilderness Medic		Ashley Short		1	8/16		
7. Control Operations								
Safely and efficiently conduct repair work on all interior and secondary lines.								
8. Special Instructions								
*Resource designated for initial attack contingency.								
9. Division/Group Communications Summary								
Function	Frequency – RX / tone		Frequency – TX / tone		Channel	Channel Name		
Command								
Tactical Div/Group	see communications plan							
Air to Ground								
Prepared by (Resource Unit Leader)			Approved by (Planning Section Chief)			Date Prepared	Time	
			<i>Ruth Johnson</i>			8/8/2020	20:30	

AIR OPERATIONS SUMMARY

Prepared By: Mike DeMello

Prepared Date: 08/05/20

Prepared Time: 1200

1. INCIDENT NAME: Worthington Fire	2. OPS PERIOD DATE: 08/09/20	START TIME: 0800	END TIME: 2000	SUNRISE: 0608	SUNSET: 2025
3. REMARKS (Safety Notes, Hazards, and Air Operations Special Equipment, etc.): HIGH HOT HEAVY CONDITIONS, SMOKE, HIGH WINDS, TURBULENCE. FOLLOW WIND LIMITATION PROTOCOLS WHEN CONDUCTING AIR OPERATIONS. PLEASE CHECK NOTAMS Please Send all Aircraft costs to orrvcc@firenet.gov			4. READY ALERT AIRCRAFT MEDEVAC: Any Available		5. TFR #: Worthington Fire N42 29.02 W122 42.82 3M Radius 7,000msl

6. PERSONNEL	NAME	PHONE #	7. FREQUENCIES	AM	FM	8. FIXED-WING- Type/ Make-Model/ N#/ Base
UAO	Mike DeMello	541/ 324-0876	A/A Primary	127.000		AIRTANKERS --- Order through RVICC
Medford ATB	Justin Bohannan	479/ 200-0818	Air to Ground	167.0750	167.0750	LEAD PLANES -- Order through RVICC
Medford VLAT	Bo Bohannan	479/ 981-9123	National FF	168.650 R+ 110.9	168.650 T+ 110.9	AERIAL SUPERVISION - Order through RVICC
Fixed Wing-ATGS	Contact RVICC for Availability		Local FF	166.7875 R+ 67.0	166.7875 T+ 67.0	Tanker Base Main Line —541/ 779-0397
Siskiyou Helibase Manager	Matt Schutty	406/ 360-3758	Air Guard	168.625	168.625 T+ 110.9	
2WM Manager	Alex Voshell	208/ 602-9602				
8AC Manager	Corey Favorite	530/ 867-4711	Medford Tanker Base	123.975		

9. HELICOPTERS

FAA N#	TY	MAKE/ MODEL	BASE	START	AVAIL	REMARKS	FAA N#	TY	MAKE/ MODEL	BASE	START	AVAIL	REMARKS
N178AC	1	S-64	KMFR	0800	0900	Contact RVICC for Availability	AA-305	1	AC-90	KMFR	0800	0900	Contact RVICC for Availability
N202WM	2	KMAX	K3S8	0800	0900	Contact RVICC for Availability	AA-610	1	AC-90	KMFR	0800	0900	Contact RVICC for Availability
S260		CL415	KEUG	0800	0900	Contact RVICC for Availability	N28HX	2	Bell 205++	KMFR	0800	0900	Contact RVICC for Availability
S263		CL415	KEUG	0800	0900	Contact RVICC for Availability							

10. TASK/ MISSION/ ASSIGNMENT (Type/ function includes: Air Tactical, Retardant, Recon, Personnel Transport, Bucket Operations, SAR, etc.)				
TYPE/FUNCTION	NAME OF PERSONNEL OR CARGO (If applicable) or instructions for tactical aircraft	MISSION START	FLY FROM	FLY TO
Recon	As Requested	As Requested	Any Location	Fire
Bucket Support	As Requested	As Requested	Any Location	Fire
Troop Transport	As Requested	As Requested	Any Location	Fire
Aerial Supervision	As Requested	As Requested	Medford or Ashland	Fire
UAS	As Requested	As Requested	Any Location	Fire
Supply Missions	As Requested	As Requested	Any Location	Fire

NOTES: Please advise RVICC if any planned UAS Flights are going to be conducted either day or night, so we can de-conflict with all the units including the Medford Airport Tower.

Worthington Fire

August 9, 2020

Safety Message

Minimizing Driving Risks

- Drive with your lights on at all times.
- Make sure your windshield is clean.
- Drive at a speed that would allow you to stop within your sight distance.
- Obey all State and local speed limits and rules of the road.
- Slow down when you approach another vehicle on a narrow road.
- Use your turn signals appropriately.
- Ensure proper rest before you get behind the wheel.
- Give Heavy equipment on low-boys the right of way on single lane roads. (It's easier for a smaller vehicle to pull off).



Driving:

Driving is one of the most hazardous tasks that we perform when assigned to fires. Because of the fact that we perform the task literally thousands of times in the course of our daily lives we tend to take it for granted. Based on recent accident trends, vehicle accidents are the source of more deaths and serious injuries to wildland firefighters than any other single cause. Vehicle operators need to recognize poor driving habits and strive to develop proper defensive driving techniques.

Safety Officer: Mike Hackett

INCIDENT RADIO COMMUNICATIONS PLAN			Incident Name Worthington Fire			Date/Time Prepared 8/4/2020 1800		Operational Period Date/Time 8/09/2020		
Only frequencies listed on this 205 are authorized for use on this incident.										
Ch #	Function	Channel Name/Trunked Radio System Talk-group	Assignment	RX Freq N or W	RX Tone	TX Freq N or W	Tx Tone	Mode	Remarks	
1N	TACTICAL	TAC 1	DIVISION: A	168.2000 N	110.9	168.2000 N	110.9	A	Division Tac	
2N	TACTICAL	TAC 2	DIVISION: E	166.7250 N	110.9	166.7250 N	110.9	A	Division Tac	
3N	TACTICAL	TAC 3	DIVISION:P	168.2500 N	110.9	168.2500 N	110.9	A	Division Tac	
4N	TACTICAL	TAC 4	DIVISION: Unassigned	166.7750 N	110.9	166.7750 N	110.9	A	Unassigned	
5N	COMMAND	BLM FLOUNCE	All Branches	172.4500 N	None	166.3500 N	100.0	A	Command to ICP talks to RVICC dispatch	
6N	COMMAND	USFS Rustler High Cascades	All Branches	169.5750 N	67.0	164.8750 N	79.7	A	Command to ICP talks to RVICC dispatch	
7N	COMMAND	USFS Robinson High Cascades	All Branches	169.5750 N	67.0	164.8750 N	91.5	A	Command to ICP talks to RVICC dispatch	
8N	COMMAND	USFS Dutchman Siskiyou Mtns	All Branches	169.9750 N	67.0	164.9375 N	118.8	A	Command to ICP talks to RVICC dispatch	
9N	TACTICAL	RSF TAC	USFS TAC	167.4250 N	67.0	167.4250 N	67.0	A	Forest Tac	
10N	AIR to GROUND	A/G 1	Worthington Secondary	167.0750 N	None	167.0750 N	None	A	For Aircraft contact	
11N	ODF FLOUNCE	RPTR	ODF FLOUNCE	151.1750 N	None	159.4125	173.8	A	MEFORD ODF State RPTR	
12N	ODF ROXY	RPTR	ODF ROXY	151.1750 N	None	159.4125	179.9	A	MEFORD ODF State RPTR	
13N	ODF RED	ODF RED	ODF RED TAC	151.3400 N	None	151.3400 N	156.7	A	MEFORD ODF State TAC	
14N	ODF WHITE	ODF WHITE	ODF WHITE TAC	151.3100 N	None	151.3100 N	156.7	A	MEFORD ODF State TAC	
15N	TACTICAL	RV TAC 2	CNTY TAC	159.2400 N	156.7	159.2400 N	156.7	A	CNTY tactical	
16N	EMERGENCY	AIRGUARD	All Divisions	168.6250 N		168.6250 N	110.9	A	Urgent Aircraft Contact (16CH.HT)	
5. Prepared by Dennis Brigante, COML					Incident Location Fire Latitude Longitude					

The convention calls for frequency lists to show four digits after the decimal place, followed by either an “N” or a “W” depending on whether the frequency is narrow or wide band.

Make Sure Squelch Knob is turned all the way to the left, so it clicks. This is to activate the RX tone Guard. Or you will hear all radio traffic from all areas.

Worthington Fire SWO IMT3 Phone List

Name	Position	Cell
Brumm, Joel	Public Information	541-200-4485
Crawford, Mike	Plans (T)	458-212-0501
Ferguson, Don	Public Information	541-778-2679
Hackett, Mike	Safety	541-531-7081
Hawkinson, Colby	Lead READ	541-727-8437
Houk, John	Deputy Logistics	775-815-8577
Jesse Kiene	IC (T)	541-531-5568
Johnson, Ruth	Plans	541-591-0920
Johnson, Stacy	READ (T)	541-201-3119
Knighton, Lynda	Ordering	541-821-7119
Lane, Michelle	Finance	801-682-6717
McCann, Mike	IC	530-249-1694
Stephens, Shane	Ground Support	541-890-5540
Wallace, Trevor	Operations	541-450-1133
Wedekind, Cindy	Logistics	541-450-1136
	Demob/check-in	541816-0454
	RVICC	541-618-2510
	Expanded - Leslie	541-618-2177
	Expanded - Mary	541-618-2162

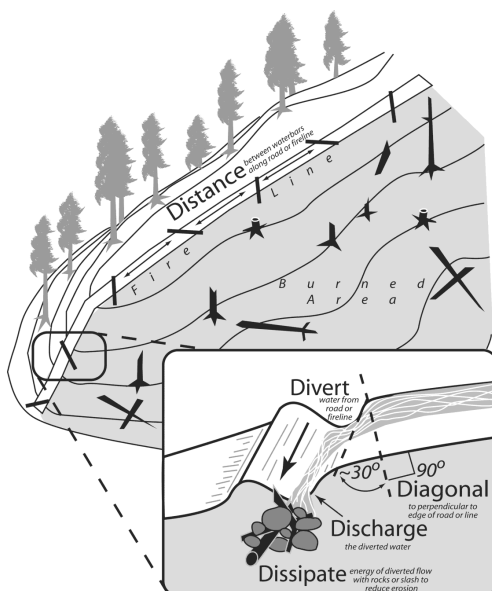
Mop-up Standards for BLM Lands – Worthington Fire, Medford District BLM

The intent of mop up is to make the likelihood of the fire escaping the containment perimeter very unlikely through the rest of the fire season or onset of significant rains. Mop up will be implemented to the degree and location necessary to meet the above intent.

- The Bureau of Land Management's approach to mop-up, in order to minimize unnecessary exposure to firefighters, is not to specify a distance or percentage "standard." There may be parts of the fire that are too dangerous for *any* mop-up (e.g., snag patches, extremely steep/rocky terrain).
- To reduce hazards during mop-up, fall intermittent snags that pose "imminent" danger to firefighters (ref. **Field Guide for Danger Tree Identification and Response**, RG-NR-FP-PR-01-08). Avoid bucking of logs when possible in an effort to keep whole trees in long segments. This fire is extremely rocky in places. Watch for rock and log roll out.
- Spot fires outside the control lines will be mopped up commensurate with exposure and values. The perimeter of spots will be mapped in GIS.
- Mop-up of partially burned areas further inside the lines **will be the exception** and determined on a case-by-case basis by the READ, Safety Officer and Operations depending on the specific values at risk.
- As mop-up specifications are met on a Division, Operations will develop a plan for the resources and equipment to be left in place that may be required for future contingency actions.
- Use the water bar spacing guide along with the diagram and specification below for proper water bar installation.

Water Bar Guidelines (Hand and Dozer Lines)

Fire Line Slope %	Maximum Water Bar Spacing (feet)
2-5	300
6-10	200
11-15	150
16-20	100
21-35	75
36+	50



- Cut in the water bar – do not simply push up loose soil.
- Water bars should direct runoff AWAY FROM the burned area where possible.

Plans

Fillable forms – time and performance evaluations (click the link, or scan the code): [fillable forms](#)



Adobe Reader DC on your mobile device is required to use fillable PDF forms. Must have adobe reader on your smart device in order to utilize.

Adobe Reader is free and available here: <https://get.adobe.com/reader/>

Demob

1. **Ground Support:** Complete vehicle inspection if not selecting “no damages/no claim” in box 11 on the OF-296 (contractors).
2. **Weed wash:** Complete weed wash, they will ask for your resource order number and let demob know when you have completed.
3. **Communications:** Return radios you have checked out to security at the front door.
4. **Finance:** Close out time with finance.
5. **Plans:**
 - a. Performance evaluations: Available in forms (above). Please complete (if applicable) and email to 2020.worthington.plans@firenet.gov. In the subject line, please include your resource number (example: E-12 performance)
 - b. Send any unit logs or other documentation (if applicable) to 2020.worthington.plans@firenet.gov with your resource number in the subject line.
 - c. **Call demob 541-816-0454 to finalize you check out.** You will not be officially released from the incident until you call.

08/09/2020

TENTATIVE RELEASE

WORTHINGTON US-OR-MED-000243

CREWS

C-15	1800	(HC2)	17161 - PONDEROSA
C-18	2000	(HC2)	17197 - NORTH PACIFIC

EQUIPMENT

E-52	0800	(HNDW)	MISC - HANDWASHING STATION
E-28	1900	(ENG3)	(ODF) JMJ FIRE INC

OVERHEAD

O-69	0830	(SEC2)	CARTMILL, MICHAEL
O-137	1830	(REAF)	PARKS, COREY J
O-108	1830	(READ)	SIGLER, JENNIFER ANN
O-106	1830	(REAF)	WORMAN, AARON

08/10/2020

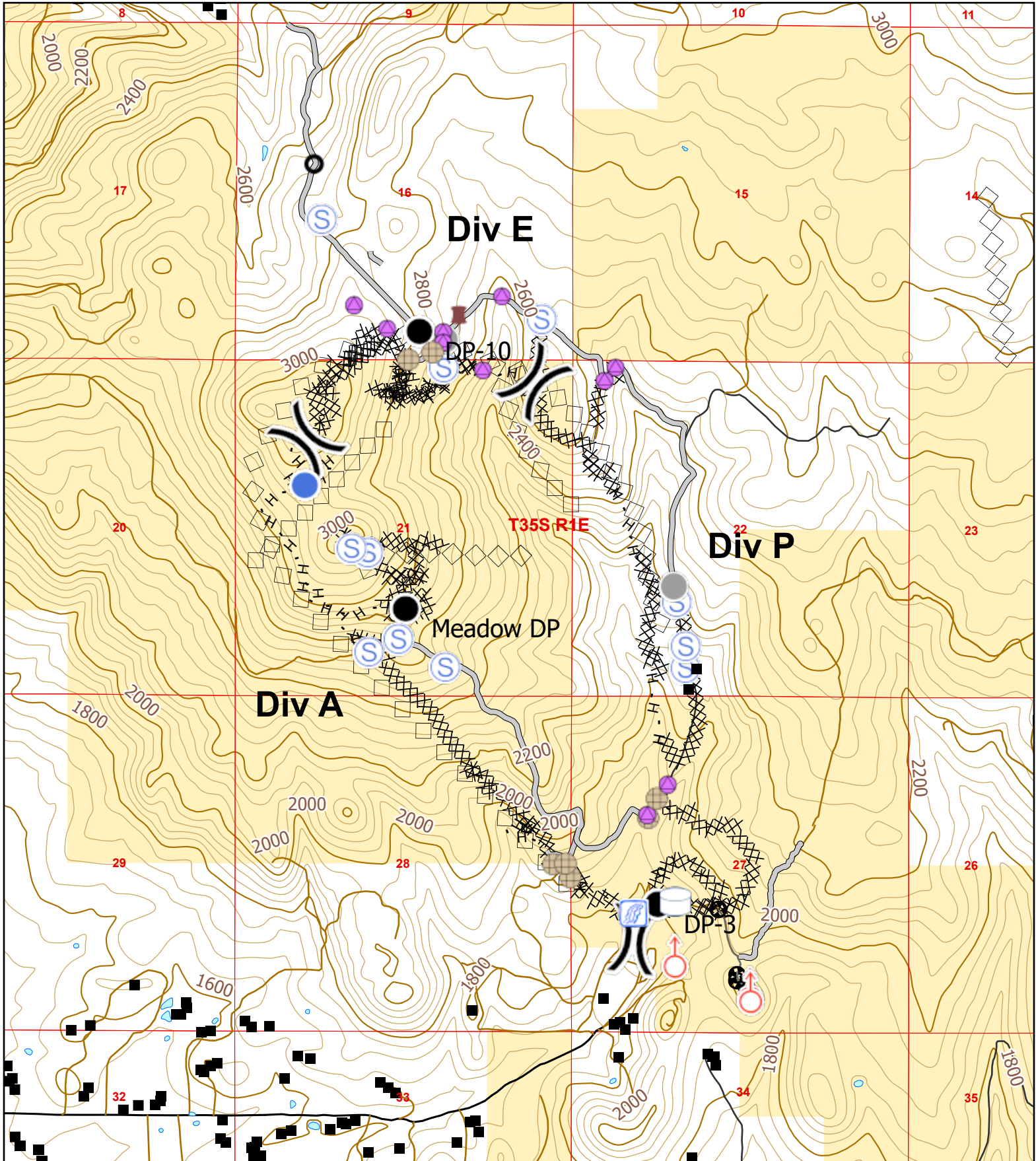
TENTATIVE RELEASE

OVERHEAD

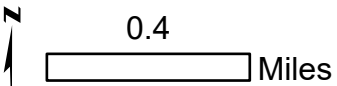
O-124	0700	(DIVS)	ROBINSON, NATHAN
O-122	0900		HANSON, MICHAEL D

Worthington

Aug 9, 2020 Day Shift



Perimeter as of 8/3/20 @ 1800 hrs



Map Scale: 1:24,000
ODF GIS: August 08, 2020, 2005 hrs

- | | | | |
|---|-----------------------|-------------------|---------------------------|
| — Paved Road | ⊕ Pump | ● Helispot | ⊗ Completed Dozer Line |
| - - - All-Weather Road | ⊕ Water Tank | ● Repair Point | H Completed Hand Line |
| — Dirt Road | ○ Culvert | ⊙ Spot Fire | R Road as Completed Line |
| ■ United States Bureau of Land Management | ● Drop Point | ⊙ Staging Area | — Access or Improved Road |
| ■ Structures | ■ Dozer Push | ⊙ Stream Crossing | ◇ Aerial Retardant Drop |
| ■ Waterbodies | ● Fence - Cut/Damaged | ⊙ Other | ◇ Air Tanker Retardant |
| | | ⊗ Division Break | ⊕ Other |

Download Maps Here



MEDICAL PLAN (ICS 206 WF)

1. Incident/Project Name				2. Shift							
Worthington Fire				Date/Time 8/9/2020 Day Shift/Night Shift							
3. Ambulance Services											
Name		Location		Phone & EMS Frequency		Advanced Life Support (ALS) Yes No					
Mercy Flight Ground		2020 Milligan Way, Medford, OR		541-779-6551 (911)		X					
Jackson County 911				911							
4. Air Ambulance Services											
Name		Phone		Type of Aircraft & Capability							
Mercy Flights Air		541-779-6551		Mercy 105 Bell 407 No Hoist Contact Rogue Dispatch to order a Medivac							
Jackson County 911		911									
5. Hospitals											
Name & Level		GPS Datum – WGS 84 Degrees Decimal Minutes		Travel Time Air Gnd		Phone		Helipad Yes No		Address	
Rogue Valley Medical Center Trauma Yes Level 2		Lat:	N42°19.07'		30 min	45 min	541-789-7000	X		2825 E. Barnett Road Medford, OR	
		Long:	W122° 49.90'								
		VHF:									
Providence Medical Center Trauma Yes Level 2		Lat:	N42°20.33'		30 min	45 min	541-732-5000	X		1111 Crater Lake Ave. Medford, OR	
		Long:	W122° 51.77'								
		VHF:									
Legacy Emanuel Hospital Trauma Yes Level 1		Lat:	N45° 32.66'		2 Hr	4 Hr	503-413-2200	X		2801 Gantenbein Ave. Portland, OR	
		Long:	W122° 40.18'								
		VHF:									
		Lat:									
		Long:									
		VHF:									
6. Division / Crew Pre-plan. Update daily											
Mercy Flight Ambulance parked at DP 3 DIV Break between A/P											
A Heli Spot DIV Break between A/P Lat. N42°29.795' / Long. W122° 41.582'											
Heli Spot Meadow DP Lat. N42°30.563' / Long. W122° 42.460'											
E Heli Spot Lat. N42°31.298' / Long. W122° 42.292'											
P Heli Spot Lat. N42°30.620' / Long. W122° 41.610'											
7. Line Medical Personnel											
Staged by DIVS											
Div A: Ashley Short EMPF				ALS Equipment, Long board, AED							
Div P: Mark Bessey EMPF				ALS Equipment, Long board, AED							
Div E: Kyle Meade EMPF				ALS Equipment, Long board, AED							
ICP: Rod Schmidt EMPF/MEDL				ALS Equipment							
<p>In an EMERGENCY contact Rouge Valley Dispatch on Channel 5 (BLM Flounce), Channel 6 (USFS Rustler), or call 541.618.2510.</p> <p>After hours Central Dispatch will answer the radio or call 911.</p>											
8. Prepared By (Medical Unit Leader)				9. Date/Time		10. Reviewed By (Safety Officer)				11. Date/Time	
/S/ Rodney Schmidt MEDL/EMPF 406.261.9541				8/8/2020 19:00		/S/ Michael Hackett				8/8/2020 19:00	

MEDICAL PLAN (ICS 206 WF)

Medical Incident Report

1. CONTACT COMMUNICATIONS DECLARE: "MEDICAL EMERGENCY" OR "NON-EMERGENCY MEDICAL TRANSPORT"

Ex: "Communications, Div. Alpha. Stand-by for a medical emergency on Div. Alpha" (If life threatening request designated frequency be cleared for emergency traffic.)

2. INCIDENT STATUS:

Provide incident summary (including number of patients) and command structure. *Ex: "Communications, I have a Red priority patient, unconscious, struck by a falling tree. Requesting air ambulance to Forest Road 1 at (Lat. / Long.) This will be the Trout Meadow Medical, IC is TFLD Jones. EMT Smith is providing medical care."*

SEVERITY

TRANSPORT PRIORITY

URGENT-RED Life threatening injury or illness.

Ex: Unconscious, difficulty breathing, bleeding severely, 2° – 3° burns more than 4 palm sizes, heat stroke, disoriented.

Ambulance or MEDEVAC helicopter. Evacuation need is **IMMEDIATE.**

PRIORITY-YELLOW Serious Injury or illness.

Ex: Significant trauma, not able to walk, 2° – 3° burns not more than 1-2 palm sizes.

Ambulance or consider air transport if at remote location. Evacuation may be **DELAYED.**

ROUTINE-GREEN

Not a life threatening injury or illness. *Ex: Sprains, strains, minor heat-related illness.*

Non-Emergency. Evacuation considered **Routine of Convenience.**

Nature of Injury or Illness & Mechanism of Injury		<i>Brief Summary of Injury or Illness (Ex: Unconscious, Struck by Falling Tree)</i>
Transport Request		<i>Air Ambulance / Short-Haul/Hoist/ Ground Ambulance / Other</i>
Patient Location		<i>Descriptive Location & Lat. / Long. (WGS84)</i>
Incident Name		<i>Geographic Name + "Medical" (Ex: Trout Meadow Medical)</i>
On-Scene Incident Commander		<i>Name of on-scene IC of Incident within an Incident (Ex: TFLD Jones)</i>
Patient Care		<i>Name of Care Provider (Ex: EMT Smith)</i>

3. INITIAL PATIENT ASSESSMENT: *Complete this section for each patient. Start with most severe.*

Patient Assessment: (See IRPG page 106)

Treatment:

4. TRANSPORT PLAN:

Evacuation Location (if different): (Descriptive Location (drop point, intersection, etc.) or Lat. / Long.)

Patient's ETA to Evacuation Location:

Helispot / Extraction Site Size and Hazards:

5. ADDITIONAL RESOURCE/EQUIPMENT NEEDS:

- Paramedic/EMT(s) SKED/Backboard/C-Collar Crew(s) Burn Supplies Oxygen
- Trauma Bag Medication(s) IV/Fluid(s) Cardiac Monitor/AED
- Other (i.e. splints, rope rescue, wheeled litter)

6. COMMUNICATIONS:

7. CONTINGENCY:

Considerations: If primary options fail, what actions can be implemented in conjunction with primary evacuation method? Be thinking ahead.

8. ADDITIONAL INFORMATION: *Updates / Changes, etc.*

REMEMBER: -Confirm ETA's of resources ordered -Act according to your level of training
 - If air or ground ambulance is DELAYED: Package and transport patient to rendezvous with incoming Ambulance.
 Re-route EMS helicopter to rendezvous point as appropriate.