

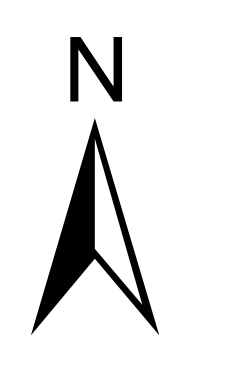
Slater Fire

CA-KNF-007035

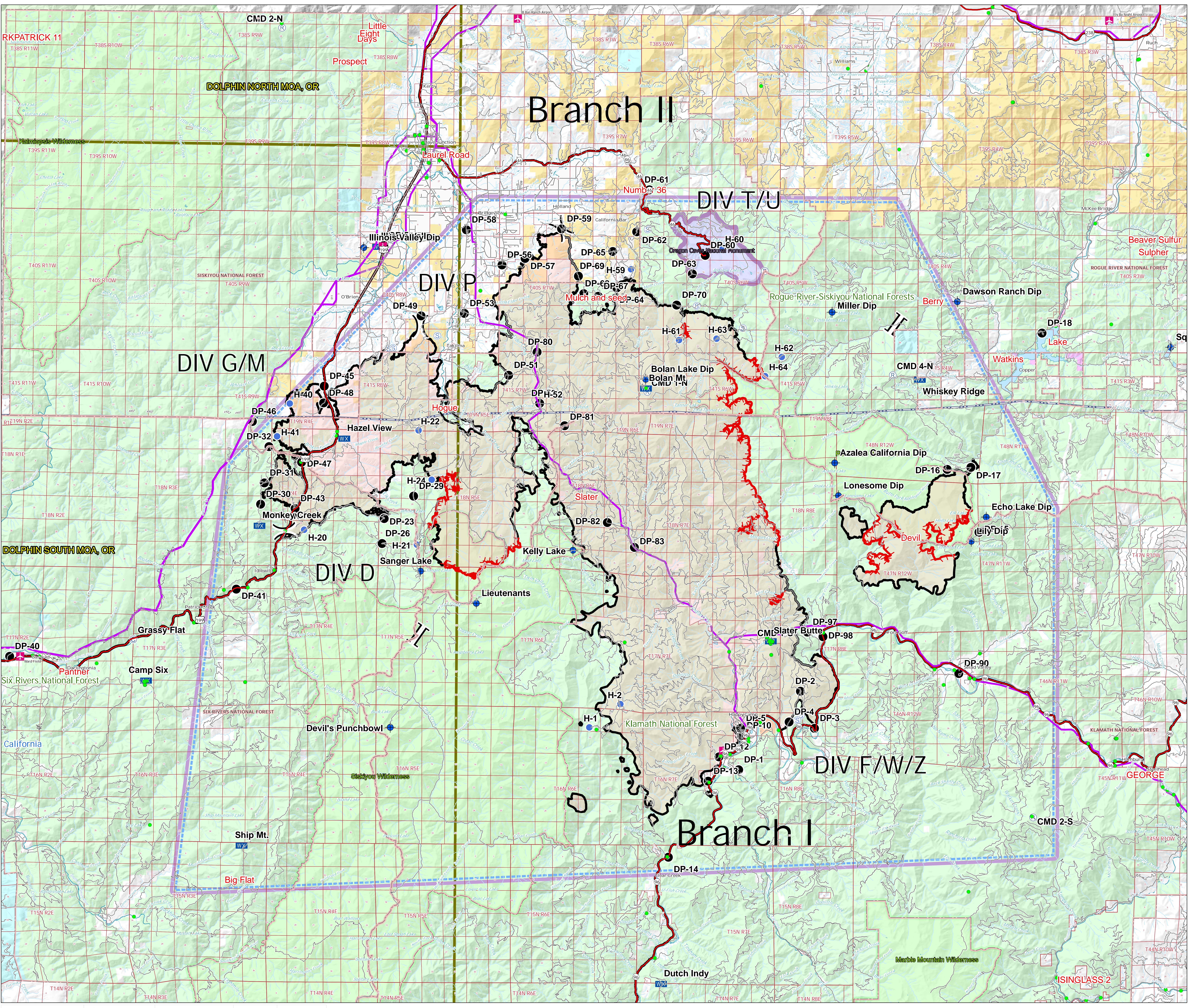
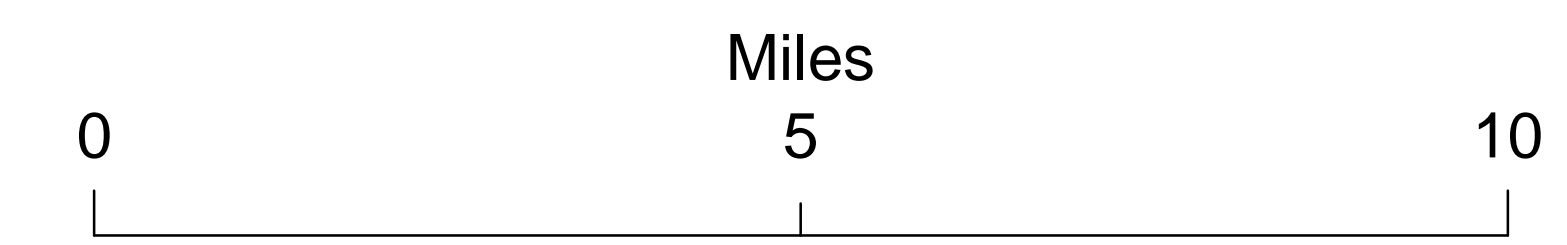
Air Operations Map

November 1, 2020

Slater: 157,285 Acres
 Devil: 8,885 Acres
 18:57 11/01



- Aviation obstacles
 - ⊙ Camp
 - ⊕ Dip Site
 - Drop Point
 - Helispot
 - WX Mobile Weather Unit
 - Ⓡ Repeater
 - Ⓢ Staging Area
 -) Division Break
 - | Branch Break
 - Uncontrolled Fire Edge
 - Contained Line
 - Oregon Caves National Monument
- Ownership**
- Bureau of Land Management
 - Forest Service
 - National Park Service
 - Bureau of Indian Affairs
 - Department of Defense
 - State
 - Private
 - TFR



Point Type	Label	Comments	Lat	Long
Helispot	H-1		41 48.233' N	123 30.307' W
Helispot	H-2		41 49.113' N	123 28.755' W
Helispot	H-20	Avoid weeds - Himalayan blackberry Switchback on road no improvement needed.	41 55.575' N	123 44.712' W
Helispot	H-21	Approved by HMGB and Resource Advisors	41 55.049' N	123 39.033' W
Helispot	H-22	Type 2 4000'	41 59.343' N	123 38.993' W
Helispot	H-24	Type 3	41 57.492' N	123 38.312' W
Helispot	H-40	H-40: Type 3 (HOGE) 2800' - approved by HMGB and	42 00.311' N	123 45.486' W
Helispot	H-41	Type 3 3500'	41 59.075' N	123 46.110' W
Helispot	H-52	T2 HOGE @ 4600' approved JJ mgr & AOBD Barrett. Paved, no hazards, power line to the west. Page Mtn	42 00.382' N	123 32.905' W
Helispot	H-59	Sno-park. Junction NF 48 & Greyback Rd Type 3 needs dust abatement 3000	42 5.445' N	123 28.340' W
Helispot	H-60	T2 approved HOGE @ 4300' by JJ mgr 553 and AOBD	42 06.251' N	123 23.810' W
Helispot	H-61	Approved for T3 HOGE 3500' by JJ mgr 553 & AOBD	42 02.794' N	123 25.900' W
Helispot	H-62		42 2.178' N	123 20.719' W
Helispot	H-63	Type 2 5500'	42 2.852' N	123 24.009' W
Helispot	H-64	T2. 5500'	42 1.455' N	123 21.558' W
Helispot	Unknown		42 1.447' N	123 21.556' W

Point Type	Label	Comments	Lat	Long
Aerial Hazard		100 foot cell tower	41 58.077' N	123 44.878' W
Aerial Hazard		150-200 foot cell tower	42 04.644' N	123 35.861' W
Dip Site	Azalea California Dip		41 58.207' N	123 18.036' W
Dip Site	Bolan Lake Dip		42 01.319' N	123 27.570' W
Dip Site	Dawson Ranch Dip		42 04.278' N	123 11.882' W
Dip Site	Devil's Punchbowl		41 48.185' N	123 40.299' W
Dip Site	Echo Lake Dip		41 56.190' N	123 10.400' W
Dip Site	Illinois Valley Dip		42 06.187' N	123 41.828' W
Dip Site	Kelly Lake		41 54.880' N	123 31.180' W

Dip Site	Lieutenants	41 52.864' N	123 36.021' W
Dip Site	Lily Dip	41 55.280' N	123 11.150' W
Dip Site	Lonesome Dip	41 56.976' N	123 17.839' W
Dip Site	Miller Dip	42 03.867' N	123 18.195' W
Dip Site	Sanger Lake	41 54.060' N	123 38.844' W
Dip Site	Squaw Lake Dip	42 02.573' N	123 01.126' W
Restricted Water Source	Raspberry	41 50.906' N	123 37.264' W
Restricted Water Source	NO DIP East Tanner Lake	42 00.591' N	123 24.321' W
Restricted Water Source	NO DIP Elk Lake	41 56.140' N	123 11.183' W
Restricted Water Source	NO DIP Hello Lake	41 56.077' N	123 11.872' W

Restricted Water Source	NO DIP Tanner Lake	42 00.512' N	123 24.863' W
Restricted Water Source	NO DIP Towhead Lake	41 55.652' N	123 11.732' W
Safety Zone	~ 1 acre safety zone cleared by dozer.	42 03.142' N	123 38.270' W
Safety Zone	2 to 3 acres	42 03.393' N	123 39.377' W
Safety Zone	about 2 acres	42 03.149' N	123 38.284' W
Safety Zone		41 46.742' N	123 24.067' W
Safety Zone		42 03.620' N	123 38.933' W
Safety Zone		42 03.840' N	123 36.715' W
Safety Zone		42 06.241' N	123 40.797' W