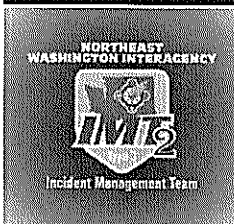

INCIDENT ACTION PLAN

BADGER LAKE FIRE

Friday, August 21, 2020
0600-2000 Operational Period



Badger Lake

WA-NES-1921/WA-WFS-108

AHM-221

PN NFM8 (1502)

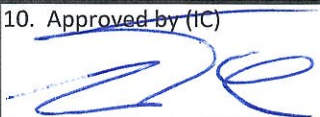
Chapman Lake

WA-NES-1960

AHY-221

PN NF8L (1502)



Incident Objectives	1. Incident Name Badger Lake	2. Date Prepared 8/20/2020	3. Time Prepared 1200
4. Operational Period (Date and Time) 8/21/2020 0600-2000			
5. General Control Objectives for the Incident (include Alternatives)			
<ul style="list-style-type: none"> • Minimize potential risks to firefighter and provide for public safety at all times. This includes the application of the "10 and 18", LCES, and the Risk Management Process. • Fight fire aggressively to limit acreage burned. • Act professionally and in a manner that fosters good relationships with the public, private landowners, timber industry representatives, elected officials and other stakeholders. • Maximize opportunity for cost saving without jeopardizing public or firefighter safety. • Maintain awareness of avoidance areas and implement tactics accordingly. • Follow agency policies at all times and respect the policies of the host agency. 			
6. Weather Forecast for Operational Period			
See attached weather forecast.			
7. General Safety Message			
<ul style="list-style-type: none"> • Provide for firefighter and public safety at all times. • Monitor compliance of 10 and 18 by all incident personnel. • Adhere to 2:1 work/rest ratio for all fire line personnel. • Aviation safety is high priority. Assess the risk against the benefit of the mission. • Ensure all assigned personnel understand emergency medical reporting & transport procedures including locations of nearest emergency responders & facilities. 			
8. Attachments (check if attached)			
<input checked="" type="checkbox"/> Organization List (ICS 203) <input checked="" type="checkbox"/> Assignment List (ICS 204) <input checked="" type="checkbox"/> Air Operations (ICS 220) <input checked="" type="checkbox"/> Weather <input checked="" type="checkbox"/> Communication Plan (ICS 205) <input checked="" type="checkbox"/> HR Message <input checked="" type="checkbox"/> Safety Message <input checked="" type="checkbox"/> Medical Plan (ICS 206) <input checked="" type="checkbox"/> Incident Maps			
ICS-202	9. Prepared by (PSC) Debbie Plummer	10. Approved by (IC) 	

ORGANIZATION ASSIGNMENT LIST			
1. Incident Name		Badger Lake	9. OPERATIONS SECTION
2. Date	8/20/2020	3. Time	1200
Planning Operations		Shane Robson (509) 675-2256	
4. Operational Period	8/21/2020	0600-2000	Field Operations (T)
Justin Hughes (509) 288-9121			
5. INCIDENT COMMANDER & STAFF		a. Division B	
Incident Commander	Tim Love (509) 563-9367		Division Supervisor
Travas Fandry (509) 954-4252			
Deputy	Dean Kiefer (509) 675-1483		Deputy
Incident Commander (T)	Josh Tellessen (509) 680-1034		b. Division C
Safety Officer	Brad Martin (509) 953-2730		Division Supervisor
Matt Dauenhauer (509) 993-3380			
Safety Officer (T)	Ken Peralta (509) 671-1403		Deputy
Information Officer	Brian Schaeffer (509) 435-7001		c. Division X
Liaison Officer	Ryan Power (509) 934-0172		Division Supervisor
Doug Dodson (509) 220-9593			
Security	Brian Czulinski (509) 994-8570		Deputy
6. AGENCY REPRESENTATIVE		d. Division	
Agency	Name		Division Supervisor
DNR	Bob McKellar (509) 675-8516		Deputy
DNR	Pat Ryan (509) 640-1255		
		10. FINANCE SECTION	
SCFD3	Cody Rohrbach (509) 690-1492		Chief
Melissa Nelson (509) 869-5598			
WSP	Esther Hernandez (360) 239-3687		Deputy
Cari Ross-Koler (509) 936-3563			
			Time Unit
Lisa Dickinson (208) 920-0388			
7. PLANNING SECTION			
Chief	Debbie Plummer (509) 991-0334		11. CONTACTS / OTHER INFORMATION
Deputy	Walt Seidel (509) 939-5751		NEWICC (509) 685-6900 Fax (509) 685-6918
GISS	Pete Sargent (619) 379-4093		
ITSS (T)	Todd Mallery (509) 280-1379		
8. LOGISTICS SECTION		Debbie Plummer	
Chief	Matt Lougy (509) 563-9634		
Deputy	Mike Bucy (509) 953-3189		
Basecamp Manager	Mark Williams (503) 908-2833		
Basecamp Manager	Jerry Lease (509) 995-7027		
Communications Unit	Todd Bellefeuille (509) 991-9769		
Medical Unit	Jason Webster (509) 435-8389		

DIVISION ASSIGNMENT LIST		1. Branch	2. Division / Group			
3. Incident Name Badger Lake		4. Operational Period Date: 8/21/2020 Time: 0600-2000				
5. Operations Personnel						
Planning Operations	<i>Shane Robson</i>		Field Operations	<i>Justin Hughes (T)</i>		
Safety Officer	<i>Brad Martin/Ken Peralta (T)</i>		Division/Group Supervisor	<i>Travas Fandrey</i>		
6. Resources Assigned this Period						
RO #	Strike Team/Task Force/Resource	Leader	# People	Contact (phone, radio freq, etc.)	EMT	Remarks
C-6	17127 Dust Busters	Chris Urban	20			
O-2117	STEN	Eric Hotchkiss	1			Puget Sound STEN
O-2124	STEN (T)	Jordan Simmonds	1			Puget Sound STEN
E-2118	B341	Matthew Williams	2			Puget Sound STEN
E-2119	Type 6	John Deaver	3			Puget Sound STEN
E-2120	B136	Kyle Byrne	3			Puget Sound STEN
E-2121	B182	Mike Tjosovoid	3			Puget Sound STEN
E-2122	B348	Adam Santiago	3			Puget Sound STEN
E-2123	WT334	Ryan Cadwick	1			Puget Sound STEN
			37			
7. Work Assignments						
1) Continue to secure the fire perimeter. 2) Mop-up 100 feet along perimeter and 200 feet around or adjacent to structures. See mop-up and turnback standards in IAP. 3) FLIR work around Structures.						
8. Special Instructions						
1) Division briefing site will be located at DP 30. 2) Complete your daily COVID checks utilizing the checklist in the IAP. 3) Stay hydrated!						
9. Communication Summary						
Function	Name	Mode	Frequency			
COMMAND	COMMAND 1	N	See Communication Plan ICS205 for Details			
COMMAND	COMMAND 2	N				
TACTICAL	VFIRE 21	N				
AIR	A/G BADGER	N				
Prepared by (RESL)		Approved by (PSC)		Date:	Time:	
		Debbie Plummer		8/20/2020	1200	

DIVISION ASSIGNMENT LIST			1. Branch		2. Division / Group		X
3. Incident Name Badger Lake				4. Operational Period Date: 8/21/2020 Time: 0600-2000			
5. Operations Personnel							
Planning Operations		<i>Shaneen Robson</i>		Field Operations		<i>Justin Hughes (T)</i>	
Safety Officer		<i>Brad Martin/Ken Peralta (T)</i>		Division/Group Supervisor		<i>Doug Dodson</i>	
6. Resources Assigned this Period							
RO #	Strike Team/Task Force/Resource	Leader	# People	Contact (phone, radio freq, etc.)	EMT	Remarks	
E-18	Stevens Co. Tender 54	Melanie Brashler	2				
E-24	Anderson Dozer	Kory Flick	1				
O-9	HEQB	Steve DeCook	1				
O-2101	STEN	Seth Ellis	1			Mid-Columbia STEN	
O-2108	STEN (T)	Herb King	1			Mid-Columbia STEN	
E-2102	B-65	Austin Sabedra	2			Mid-Columbia STEN	
E-2103	B-31	Marcus Wells	3			Mid-Columbia STEN	
E-2104	B-10	Clint Webley	2			Mid-Columbia STEN	
E-2105	B-79	Adam Jones	3			Mid-Columbia STEN	
E-2106	1216	Mark Bise	2			Mid-Columbia STEN	
E-2107	Tender 588	Josh Oord	2			Mid-Columbia STEN	
			20				
7. Work Assignments							
<p>1) Mop-up 200 feet along perimeter . See mop-up and turnback standards in IAP. 2) Complete rehab to turnback standards in IAP.</p>							
8. Special Instructions							
<p>1) Division briefing site will be located at Station 39 (8811 Cheney Plaza Road). 2) Complete your daily COVID checks utilizing the checklist in the IAP. 3) Stay hydrated!</p>							
9. Communication Summary							
Function	Name	Mode	Frequency				
COMMAND	COMMAND 1	N	See Communication Plan ICS205 for Details				
COMMAND	COMMAND 2	N					
TACTICAL	VFIRE 25	N					
AIR	A/G BADGER	N					
Prepared by (RESL)			Approved by (PSC)			Date:	Time:
			Debbie Plummer			8/20/2020	1200

WEATHER	1. Incident Name Badger Lake	2. Date Prepared 8/20/2020	3. Time Prepared 1200
<p>.DISCUSSION...</p> <p>Southwest winds will become gusty this afternoon and even stronger Friday afternoon along with the cold front moving through. Friday afternoon could see wind gusting out of the south-southwest up to 30 mph. Slight chances for brief rain showers may accompany the front Friday evening with little to no measurable precipitation. Winds should favor the west Saturday with lighter speeds and under drier conditions.</p> <p>.FRIDAY...</p> <p>Sky/weather.....Sunny. CWR.....0 percent. LAL.....1. Max temperature.....Around 89. Min humidity.....23 percent. Wind (20 ft).....South winds 6 to 12 mph. Gusts up to 30 mph in the afternoon. Mixing height.....5000 ft AGL in the morning increasing to 8500 ft AGL in the afternoon. Transport winds.....South around 12 mph. Haines Index.....2 or very low potential for large plume dominated fire growth.</p> <p>.FRIDAY NIGHT...</p> <p>Sky/weather.....Clear then becoming partly cloudy. CWR.....0 percent. LAL.....1. Min temperature.....Around 55. Max humidity.....72 percent. Wind (20 ft).....Southwest winds 7 to 11 mph. Gusts up to 30 mph early in the evening. Mixing height.....5500 ft AGL in the evening decreasing to 1000 ft AGL overnight. Transport winds.....Southwest around 14 mph. Haines Index.....3 or very low potential for large plume dominated fire growth.</p> <p>.SATURDAY...</p> <p>Sky/weather.....Sunny. CWR.....0 percent. LAL.....1. Max temperature.....Around 81. Min humidity.....23 percent. Wind (20 ft).....Southwest winds 6 to 7 mph. Mixing height.....4500 ft AGL in the morning increasing to 6000 ft AGL in the afternoon. Transport winds.....Southwest around 12 mph. Haines Index.....4 or low potential for large plume dominated fire growth.</p>			
9. Prepared by (Name and Position)			

117°41'W

117°40'W

117°39'W

117°38'W

117°37'W

117°36'W

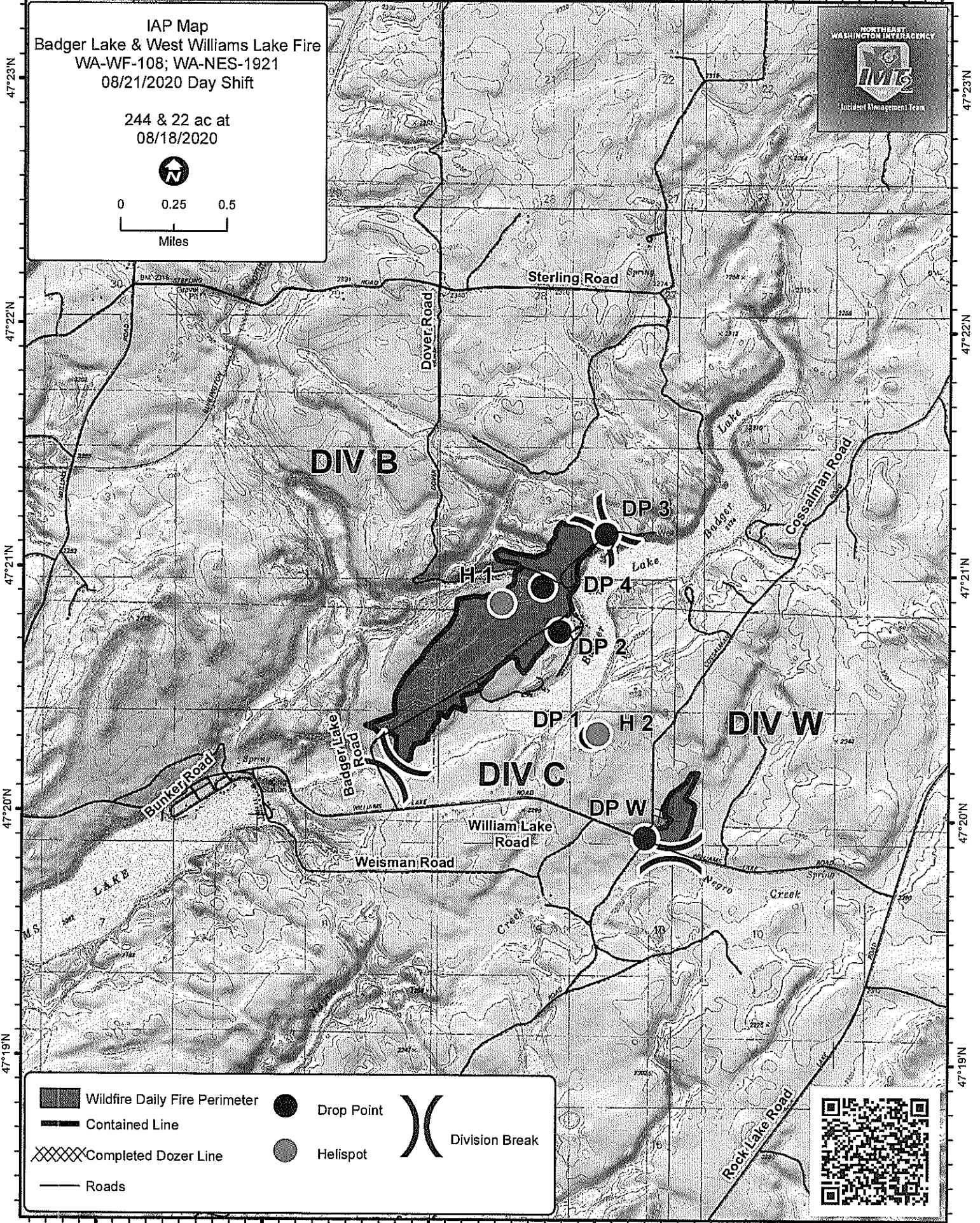
IAP Map
 Badger Lake & West Williams Lake Fire
 WA-WF-108; WA-NES-1921
 08/21/2020 Day Shift

244 & 22 ac at
 08/18/2020



0 0.25 0.5

Miles



	Wildfire Daily Fire Perimeter		Drop Point		Division Break
	Contained Line		Helispot		
	Completed Dozer Line				
	Roads				



117°41'W

117°40'W

117°39'W

117°38'W

117°37'W

117°36'W

47°19'N

47°20'N

47°21'N

47°22'N

47°23'N

47°19'N

47°20'N

47°21'N

47°22'N

47°23'N

117°35'W

117°34'W

117°33'W

117°32'W

47°23'N

47°23'N

IAP Map
Chapman Lake Fire
WA-NES-1960
08/21/2020 Day Shift

67 ac at
08/20/2020



0 0.25 0.5
Miles



DIV X

H 3

DP 10

H 4

Chapman Lake

Grogan Road

Sheney Plaza Road

Pine Grove Road

Cheney Plaza Road

Capt. J. Muller Historical Mon

Spring

Gravel Pit #1

Gravel Pit #2

Cheney Plaza Road

Nearly Road

47°22'N

47°22'N

47°21'N

47°21'N

47°20'N

47°20'N

	Wildfire Daily Fire Perimeter		Drop Point		Staging Area		Division Break
	Contained Line		Hellspot				
	Roads						



117°35'W

117°34'W

117°33'W

117°32'W

INCIDENT RADIO COMMUNICATIONS PLAN 1-205

1. INCIDENT NAME	2. DATE/TIME PREPARED	3. OPERATIONAL PERIOD DATE/TIME
BADGER LAKE FIRE	08/20/2020	08/21/2020 DAY / NIGHT

4. BASIC RADIO CHANNEL UTILIZATION

Ch #	Function	Channel Name	Assignment	RX Freq	NW	RX Tone/NAC	TX Freq	NW	TX Tone/NAC	Mode Analog (A) Digital (D) Mixed (M)	Remarks
1	BADGER CMD	CMD 1	CMD	151.1375	N	136.5	159.4725	N	136.5	A	Badger Lake CMD RPTR 1 (fire areas)
2	BADGER CMD	CMD 2	CMD	154.4525	N	136.5	158.7375	N	136.5	A	Badger Lake CMD RPTR 2 (ICP area)
3	SRMA 3	SRMA 3	CMD	159.9350	N	110.9	159.0300	N	123.0	A	SRMA 3
4	SRMA 4	SRMA 4	CMD	154.7400	N	127.3	158.9850	N	146.2	A	SRMA 4
5	DNR CHENEY	DNR CHNY	CMD	159.3675	N	156.7	151.4675	N	156.7	A	DNR CHENEY RPTR
6	TAC	VFIRE 21	DIV B	154.2800	N	156.7	154.2800	N	156.7	A	DIVISION B
7	TAC	VFIRE 23	DIV C	154.2950	N	156.7	154.2950	N	156.7	A	DIVISION C
8	TAC	VFIRE 25	DIV W/X	154.2875	N	156.7	154.2875	N	156.7	A	DIVISION W / X
9	TAC	REDNET	STRUCTURE	153.8300	N	0.0	153.8300	N	156.7	A	STRUCTURE INTEROPERABILITY
10	TAC	DNR COMMON	TAC	151.4150	N	103.5	151.4150	N	103.5	A	INTEROPERABILITY
11	TAC	DNR TAC 1	TAC	151.3100	N	103.5	151.3100	N	103.5	A	INTEROPERABILITY
12	TAC	DNR TAC 2	TAC	151.3400	N	103.5	151.3400	N	103.5	A	INTEROPERABILITY
13	A/G	DNR A/G 1	A/G	159.2700	N	103.5	159.2700	N	103.5	A	INTEROPERABILITY
14	A/G	DNR A/G 2	A/G	151.2875	N	103.5	151.2875	N	103.5	A	INTEROPERABILITY
15	PRIMARY A/G	A/G BADGER	A/G	168.5750	N	0.0	168.5750	N	0.0	A	A/G BADGER LAKE SPECIAL
16	AIRGUARD	AIRGUARD	EMERGENCY	168.6250	N	0.0	168.6250	N	110.9	A	EMERGENCY USE

5. Special Instructions: IF THERE ARE COMMUNICATIONS ISSUES PLEASE CONTACT COMMS TRAILER

6. 1-205 Prepared By: Communications Unit Leader	Name: Todd Bellefeuille	Signature: 
--	-------------------------	--

MOP-UP SPECIFICATIONS
FOR DNR PROTECTED
LANDS

Always consider over-head hazards prior to putting fire fighters in harm's way for mop up. Mitigate hazards and exposure as needed.

Achieve 100% mop-up along and inside the fire perimeter to a distance that is adequate to ensure the perimeter is secure to prevent the fire from escaping across existing containment lines.

To reduce hazards to firefighters during final mop-up, fall snags that pose "imminent" danger along all open roads within the fire perimeter.

Known spot fires outside the control lines will be 100% mopped up where appropriate to do so, a route to them will be flagged, and the perimeter of spots mapped in GIS.

Mop-up of partially burned areas further inside the lines will be determined on a case-by-case basis.

For structures and sensitive resources within the interior of the fire line, mop-up will be commensurate with the fuel type and threat level to the site.

As mop-up specifications are met on a Division, Operations will develop a plan for the resources and equipment to be left in place that may be required for future contingency actions.

Mop-up will be verified by hand held infrared equipment and/or gridded prior to fire turn back to Land Manager or Protecting Agency.

Notify Agency Representative if a cultural site is found during mop-up.

SUPPRESSION REHABILITATION STANDARDS
FOR DNR PROTECTED LANDS

All Tractor and Hand Lines

- Place water bars on tractor and hand lines with the following spacing guidelines:
 - o 6-9% slope - maximum of 300' apart
 - o 10-15% slope - maximum of 200' apart
 - o 15-25% slope - maximum of 100' apart
 - o 25% to 45% slope - maximum of 50' apart
 - o Greater than 45% slope - every 25-50'

**Spacing distances above should only be used as a guide. Use judgment in locating water bars to minimize soil erosion potential.

- Pull soil, litter, duff, and debris removed from the fire line back onto the line to cover non fire perimeter hand lines.
- Flatten large berms on all fire lines.
- Leave all freshly fallen trees as they lay. Do not limb or buck.
- Fire lines through damp or wet areas/riparian zones need to be rehabbed by hand if possible, or by the lightest equipment possible, with the least number of stream crossings. If damage is minimal, consider the possibility of not doing additional work.

- Block road access to hand and dozer lines to discourage recreational use. Attempt to visually obscure junction of line and road and make travel on first section very inconvenient (i.e. it will be too much trouble to access the line to be worth it, especially for motorcycles).
- Disperse large concentrations of unburned fuels created during suppression efforts.

Tractor Lines

- **Tractor lines on slopes less than 40%:**
 - o Water bars may be installed by tractor or track mounted excavator. Use of excavator is preferred where berms need to be pulled in. Pile smaller debris and slash at the outlet of water bars.
 - o Use only D-6 class or smaller tractors, 4 or 6 way blade preferred
 - o Install tractor or excavator water bars at a 20 to 30 degree angle to the fire line
 - o Height of bars on machines constructed water bars not to exceed 24".
 - o Rip areas of compacted soil.
- **Tractor lines on slopes greater than 40%**
 - o Install water bars by hand or with an excavator
 - o Install water bars at a 30 to 45 degree angle to the fire line.

Hand Lines

- Height of hand constructed water bars should average 12 inches. Soils in most of the burned areas are light and loose (pumice derived), making bars less than 12 inches much less effective. In heavier soils, bar heights of 8-12" are acceptable.
- For hand line rehab, construct water bars at a 45-degree angle from the line, directing water away from the fire or other parts of the fire line.

Trees and Felling Operations

- Leave all freshly fallen trees as they lay. Do not limb or buck.
 - Avoid cutting trees and snags >20" dbh. Do not cut or damage any green non-hazardous trees anywhere within the fire area unless the tree has been specifically marked for felling by the rehab team.
- Large Trees are in short supply in the local area due to past fires.

General Rehabilitation Concerns

- Identify and inventory fences, signs, and other improvements damaged by the incident
- Repair road damage incurred during incident suppression.
- Remove garbage, litter, etc, from control lines, roads, drop points, and staging areas and dispose off-site.
- Signs/flagging removal: All signs and flagging will be removed from fire lines, roads, drop points, staging areas, camps, and water chances.

MEDICAL PLAN (ICS 206 WF)

1. Incident/Project Name		2. Operational Period	
Badger Lake Fire		Date/Time 8/21/20 0600 to 2000	
3. Ambulance Services			
Name	Complete Address	Phone & EMS Frequency	Advanced Life Support (ALS) Yes No
AMR	Spokane County	911	ALS
Cheney Fire	Cheney, Wa.	911	ILS
4. Air Ambulance Services			
Name	Phone	Type of Aircraft & Capability	
Life flight Network (Air)	800-232-0911	Helo	
5. Hospitals			
Name Complete Address	GPS Datum – WGS 84 DD° MM.MMM' N - Lat DD° MM.MMM' W - Long	Travel Time from ICP Air Ground	Phone Helipad Yes No Level of Care Facility
Providence Sacred Heart 101 w 8 th ave, Spokane, WA	Lat: 47 38.9333 N Long 117 24.7667 W	15-20 min 15-20 min	509-474-3131 <input checked="" type="checkbox"/> <input type="checkbox"/> 2
Providence Holy Family 5633 N Lindgerwood, Spokane, WA	LAT 47 39.1 N LONG 117 24.4 W	15-20 min 35-40 min	509-482-0111 x 3
Deaconess 800 W 5 th Ave, Spokane, WA	Lat 47 39.0833 N Long 117 25.45 W	15-20 min 15-20 min	509-473-5800 <input checked="" type="checkbox"/> 3
Harborview 325 9 th Ave, Seattle, WA	Lat 47 36.2471 N Long 122 19.4726 W	Fixed Wing from Spokane 1hr 30 Min 4+ hrs	206-744-3000 X 1 * with burn center
6. Division Branch Group		Area Location Capability	
ICP		EMS Responders	Jason Webster EMT-P, MEDL-t
		Equipment Available	BLS Equipment

DIV B&C&W	EMS Responders & Capability	Use AM from Div X	
	Equipment Available on scene	ALS Equipment and 4x4 transport	
	Medical Emergency Channel	Cmd 1/2	
	ETA for Ambulance to Scene		
	Air: Life Flight Network	15 min	
	Ground:	10 min	
	Approved Heli Spot	H-1	H-2
	Lat	47 20.862 N	47 38.9333 N
Long	117 38.634 W	117 24.7667 W	

DIV X	EMS Responders & Capability	Pend Oreille AMB ALS	
	Equipment Available on scene	ALS Equipment 4x4 Transport	
	Medical Emergency Channel	Cmd 1/2	
	ETA for Ambulance to Scene		
	Air: Life Flight Network	15 min	
	Ground:	5 min	
	Approved Heli Spot	H-3	H-4
	Lat	47 22.085 N	47 21.6593 N
Long	117 33.0559 W	117 32.4147 W	

	8. Date/Time	9. Approved By (Safety Officer)	10. Date/Time
Jason Webster, MEDL-t 	08/20/20 1400	Ken Peralta SOF2 – t 	08/20/20 1400

In case of an urgent medical emergency (Yellow or Red), Establish an IC for the IWI and follow your Medical Incident Report and contact Badger Communications. Daily- Establish your PACE (Primary, Alternative, Contingency, Emergency) model for medical emergency extraction.

Risk Analysis

Incident Action Plan Safety Analysis 215A Modified

Revised
8/21/20
0800

Incident: Badger Lake				Operational Period: 08/21/2020 Day											
Operations Section Chief: Justin Hughes/Shane Robson				Safety Officer: Brad Martin											
Objectives: Minimize potential risks to firefighter and public safety at all times. Fight fire aggressively. Continue to secure the fire perimeter with handline and blackline.															
Hazards/ Situations	Likelihood	Severity	Risk Level	Division							Mitigations / Controls	Post-Mitigation	Severity	Risk Level	Acceptable
				B	C	W	N								
Heavy Equipment	Probable	Catastrophic	High	X	X	X					Do not work down slope below heavy equipment. Establish communications with operator. Post lookout for rolling debris. Be aware of loose soil and rock. Establish LCES.	Occasional	Catastrophic	Moderate	Yes
Air Operations Multi Aircraft	Occasional	Catastrophic	High	X	X	X					Insure that all personnel are at least 500 feet from bucket or retardant drops. Utilize air attack. Establish LCES.	Occasional	Catastrophic	High	Yes
Hazard Trees / Snags	Probable	Catastrophic	High	X	X	X					Assess, Identify, Communicate, Isolate. Establish LCES.	Occasional	Catastrophic	High	Yes
Hazardous Materials	Remote	Critical	Moderate	X	X			X			Utilize the Incident Response Pocket Guide. Identify and isolate any suspected hazardous materials. Notify supervisor and warn others in area. Keep your distance. Establish LCES.	Remote	Critical	Moderate	Yes
Transportation	Frequent	Catastrophic	High	X	X	X		X			Drive defensively with headlights on, seatbelts fastened. Stay to the right side of the road. Yield to downhill traffic and flaggers. Drive slowly and watch out for the other person. Establish LCES.	Probable	Catastrophic	High	Yes
Communication	Probable	Critical	High	X	X	X		X			DO NOT engage unless effective communications exist. Use human repeaters. Establish LCES and continuously assess to maintain LCES.	Probable	Critical	High	Yes
Environmental Hazards	Occasional	Critical	High	X	X	X		X			Bees, Snakes, and other animals are in the area. Carry medical kits for those with allergic reactions, do not harass or instigate any confrontations with animals, warn others of presence	Occasional	Critical	High	Yes
Structures	Frequent	Critical	High	X	X			X			Follow pages 12-16 of Incident Pocket Response Guide. Establish LCES.	Frequent	Critical	High	Yes
Falling Operations	Probable	Catastrophic	High	X	X	X					Post road guards. Have a falling boss who can be in contact with crews working in the area. Use qualified fallers.	Probable	Catastrophic	High	Yes
Power Lines	Remote	Critical	Moderate	X	X	X		X			Watch for down power lines and poles. Identify, isolate and report. Notify supervisor and warn others in area. Keep your distance.	Remote	Critical	Moderate	Yes
General Public	Remote	Critical	Moderate	X	X	X		X			Use of Law Enforcement to enforce Level 3 evacuation. Residents not evacuating. Vehicles, golf carts and UTVs in operating areas.	Remote	Critical	Moderate	Yes
COVID-19	Probable	Critical	High	X	X	X		X			Wear masks, utilize social distancing, and hand washing. Wildland Fire Covid-19 screening tool is to be utilized prior to start of shift. Limit personnel at briefings and only essential personnel in ICP	Probable	Critical	Moderate	Yes

SAFETY MESSAGE	Incident :	Date prepared:	Time Prepared:
	Badger Lake	8/20/2020	1000

DRIVING HOME OR TO ANOTHER ASSIGNMENT

DRIVING IS ONE OF THE MOST DANGEROUS THINGS YOU DO ON A FIRE ASSIGNMENT

- Been there, done that? **Don't take the dangers of driving for granted.** Keep alert to hazards—no matter how experienced you are.
 - Get adequate rest before beginning travel. Driving while drowsy or fatigued is a lethal combination and is no less an impairment than driving while drunk.
 - Driver shifts should not exceed 16 hours with no more than 10 hours of actual driving. Take appropriate rest breaks. **Switch drivers every few hours. NO DRIVING BEFORE 0500 OR AFTER 2200 HOURS.**
 - Ensure that all passengers have **seatbelts fastened** before the vehicle is put into motion. Drive with **headlights on**; make sure **windshields are clean** and rear-view mirrors are unobstructed.
 - **Obey posted speed limits.** On long trips, **stop and walk around the vehicle every hour or so** to avoid drowsiness.
 - **Be prepared to stop** in less than half the visible distance. **Keep the vehicle interior free of litter and loose objects** that could impair the operator or cause injury in the event of a sudden stop or accident. Store all equipment, tools, and other objects in the rear, and secure them to prevent them from becoming projectiles in the event of a sudden stop or accident.
 - **Head on collisions are the most violent type of vehicle accident.** Read the road ahead. Recognize potential hazards ahead of time. Reduce speed. Drive to the right. Ride off the road if necessary.
- Absolutely no alcoholic beverages are allowed in vehicles. No driver is allowed to drive under the influence of alcohol (any recent consumption-regardless of blood-alcohol content).**
- The use of both handheld and "hands-free" **cellular telephones** is prohibited while driving.
 - Drive defensively; Be courteous to other drivers.
 - Perform medical checks using the Wildland Fire Covid-19 Screening Tool before De-mobing or traveling to a new assignment.

Where
there's
a belt



ARRIVE ALIVE

Safety Officers: Brad Martin Sr. SOF2 Ken Peralta SOFR (T)

Workplace Controls

DNR Wildfire Division personnel and all department wildland firefighters will follow Department Safety Policy and the Injury Prevention Manual. The following controls are for use only when conducting the essential activities of emergency response, wildfire preparedness and/or wildfire suppression.

Screening

- Personnel are directed not to report to a worksite if they have any symptoms associated with COVID.
- All personnel shall be screened at the beginning of each shift utilizing DNR Daily COVID-19 Health Screening protocol and the DNR Screener Training and Guidances, as approved by the DNR COVID-19 Response Management Team, to confirm they are non-symptomatic.
- Screening shall be done maintaining social distancing as defined in the DNR COVID-19 PPE and Disinfection Protocols.
- If social distance can be maintained, no special PPE is required to be worn by the screener.
- Use of a surgical mask or a cloth face covering meeting CDC recommendations by the screener and/or person being screened is required.

PPE and Operations Best Management Practices (BMP's)

The best Covid-19 protection for firefighters is to maintain social distancing. Infrequent interactions within 6 feet are compliant with this direction. The Department has determined that the only routine fire activities that do not permit social distancing are traveling in vehicles.

For firefighting activities where social distancing cannot be guaranteed, the following PPE and Operations Best Management Practices (BMP's) must be utilized:

Engine Operations BMP's:

- Use surgical mask. If surgical mask is unavailable, then use a cloth face covering that meets CDC recommendations until surgical masks are available.
- Travel in multiple vehicles when feasible.
- Reduce staffing to 3 or 2 firefighters, as safety and operations allow.
- Increase airflow through the cab by operating the climate controls and/or lowering windows.
- Fully staff the engine only when responding to fires.
- Apply social distancing on the fire scene.
- At the end of shift, or as soon as feasible, clean all touch points of vehicle(s) with appropriate disinfectant products.

Hand Crew Operations (including Department of Correction crews) BMP's:

- Use surgical masks. If surgical mask is unavailable, then use a cloth face covering meeting CDC recommendations until surgical masks are available
- Split crew into multiple vehicles if feasible. Increase airflow through the passenger compartment.
- Occupy the crew carrier only when necessary – such as fire response.
- Implement social distance as soon as possible following travel.
- At the end of shift, or as soon as feasible, clean all touch points of vehicle(s) with appropriate disinfectant products.
- For DOC crews:
 - Offenders will follow protocols of their home institution (DOC). Please note that while we are allowing them to use DOC protocols, they remain our employee and we are responsible for them and their safety.

WILDLAND FIRE COVID-19 SCREENING TOOL

Today or in the past 24 hours, have you had any of the following symptoms¹?

Symptom
Cough more than expected?
Shortness of breath or difficulty breathing?
Fever? Chills?
Muscle pain, outside your normal for firefighting?
Sore throat?
New loss of taste or smell?
Fatigue, outside your normal for firefighting?
Headache, outside your normal for firefighting?
Congestion or runny nose, outside your normal for firefighting?
Nausea or vomiting
Diarrhea
<i>* Take temperature with no-touch thermometer, if available *</i>

Instructions for Screening

Item	What to Do
If resource has a cough that is more than expected, shortness of breath or difficulty breathing, or any other symptoms listed.	DO NOT MOBILIZE
At Entries: Consider adequate number of personnel needed for screening. Although medical personnel are ideal, screeners do not have to be medically trained. If resource has cough, shortness of breath or difficulty breathing, or any other listed symptoms including fever (over 100.4) at entry.	DO NOT ANNOUNCE Ask individual to step aside and follow the steps below.

Steps to follow

Escort symptomatic individual to isolation area.
Isolation support personnel should begin documentation.
Have symptomatic individual contact Supervisor for further direction.
Notify public health officials.
Have individual transported as appropriate.
Protect and secure any collected Personal Identifiable Information (PII) or Personal Health Information (PHI).

¹ Symptoms of Coronavirus

<https://www.cdc.gov/coronavirus/2019-ncov/symptoms-testing/symptoms.html>

NEIMT Team 2 Check In procedures:

Scan the appropriate QR code with your phone or tablet to complete an electronic check in form based on your resource type. You need a gmail account to do this. If you DO NOT have a gmail account, please complete a hard copy form, and turn in to finance section. You need to upload and email a picture of Red Card, copy of Resource Order, Agreement, or OTHER necessary paperwork to team2finance@gmail.com.

Additional documents can be sent to the Finance Section by scanning the QR Code for the Team2 Finance Email (team2finance@gmail.com).

****INCLUDE YOUR RESOURCE ORDER NUMBER IN THE SUBJECT LINE OF EMAIL (Example: E-2, O-44, C-3).**



Overhead
Check In



Equipment
Check In



Crew
Check In



HR Message	1. Incident Name Badger Lake	2. Date Prepared 8/20/2020	3. Time Prepared 1200
-------------------	--	--------------------------------------	---------------------------------

APPROPRIATE BEHAVIOR

Positive work behavior includes actions and behaviors necessary to accomplish the job such as:

- Teamwork
- Cooperation
- Communication with others clearly and respectfully if conflict or differences of opinion occur

Positive social behavior includes actions and behaviors we do at work that are not necessary to get the job done. However, they make the job more enjoyable such as:

- Showing interest and caring in someone as a person
- Discussing common interests such as family, sports, hobbies, etc.
- Expressing appreciation for a job well done or for an unsolicited act of kindness

DUTY—RESPECT—INTEGRITY

Remember the primary purpose you are assigned to an incident. Take responsibility for your actions and behaviors. Live by the following simple guideline: "If in doubt, don't do it."

**BADGER LAKE FIRE
LOGISTICS INFORMATION**

ICP 0500-2200

FOOD Breakfast: 0530 – 0800
Dinner: 1800 – 2200

REFER TRUCK 0530 – 2200

SHOWERS 0500 – 1200 AND 1400 – 2200

MEDICAL 0530 – 2100

COMMS TRAILER 24 hours/day while night shift is in place

- Batteries are available at the communications trailer by request.
- Water, ice, and lunches are available at the refer truck. Please delegate one person to pick up all supplies for your crew.
- Due to COVID-19, all “General Messages” need to be routed through your supervisor.
- Please keeps vehicle speeds down through fire camp.
- If you need assistance after hours please contact Communications (via radio or Communications Trailer).

Hydrant Filling

Only use the hydrant indicated on the map. This hydrant is metered and located across the street from the middle school, at the corner of Harvest Bluff Drive and Quail Drive.

Do not use any other hydrant.



Betz Rd

Harvest Bluff Dr

Quail Dr

Quail Dr

Betz Rd

Parkway Dr

ICP

Do NOT use Front Entrance

Showers

Apparatus Parking

Support/Staff

Social Distance Camping

Social Distance Camping

Social Distance Camping

DOC Crew Camp

Kitchen

DOC Parking

The Church of Jesus Christ of Latter...



DEMOB SCHEDULE

August 20, 2020

1400	O-8 Mark Ratcliffe (HEQB)
1400	E-16 Baker Fire Tender
1400	E-22 Anderson Excavator
1800	E-20 Deer Park Ambulance
1900	O-32 Jay Wilkins (STEN)

August 21, 2020

0600	Mid-Columbia STEN (O-2101, O-2108, E-2102, E-2103, E-2104, E-2105, E-2106, E-2107) Will be administratively reassigned to WA-NES.
0600	E-2 The General
0800	Puget Sound STEN (O-2117, O-2124, E-2118, E-2119, E-2120, E-2121, E-2122, E-2123) Will be administratively reassigned to WA-NES.
0800	E-1 Canyon Fire E571
1000	O-4 Ken Johnson (TFLD)
1000	NW STEN (O-2109, E-2110, E-2111, E-2112, E-2113, E-2114, E-2115)
1020	E-5 American Firefighter
1300	E-18 Stevens County Tender
1800	Clark County STEN (O-2133, O-2140, E-2134, E-2135, E-2136, E-2137, E-2138, E-2139)

*Resource(s) reassigned to other incidents.

August 21, 2020

1800	E-3 The General B103
1900	E-21 Pend Oreille Ambulance
1930	C-6 17127 Dust Busters

August 22, 2020

0600	Puget Sound STEN (O-2117, O-2124, E-2118, E-2119, E-2120, E-2121, E-2122, E-2123)
0730	Mid-Columbia STEN (O-2101, O-2108, E-2102, E-2103, E2104, E-2105, E-2106, E-2107)

*Resource(s) reassigned to other incidents.

MEDICAL PLAN (ICS 206 WF)

Controlled Unclassified Information//Basic

Medical Incident Report

FOR A NON-EMERGENCY INCIDENT, WORK THROUGH CHAIN OF COMMAND TO REPORT AND TRANSPORT INJURED PERSONNEL AS NECESSARY.

FOR A MEDICAL EMERGENCY: IDENTIFY ON SCENE INCIDENT COMMANDER BY NAME AND POSITION AND ANNOUNCE "MEDICAL EMERGENCY" TO INITIATE RESPONSE FROM IMT COMMUNICATIONS/DISPATCH.

Use the following items to communicate situation to communications/dispatch.

1. **CONTACT COMMUNICATIONS / DISPATCH** (Verify correct frequency prior to starting report)
Ex: "Communications, Div. Alpha, Stand-by for Emergency Traffic."
2. **INCIDENT STATUS:** Provide incident summary (including number of patients) and command structure.
Ex: "Communications, I have a Red priority patient, unconscious, struck by a falling tree. Requesting air ambulance to Forest Road 1 at (Lat./Long.) This will be the Trout Meadow Medical, IC is TFLD Jones. EMT Smith is providing medical care."

Severity of Emergency / Transport Priority	<input type="checkbox"/> RED / PRIORITY 1 Life or limb threatening injury or illness. Evacuation need is IMMEDIATE <i>Ex: Unconscious, difficulty breathing, bleeding severely, 2° - 3° burns more than 4 palm sizes, heat stroke, disoriented.</i> <input type="checkbox"/> YELLOW / PRIORITY 2 Serious Injury or illness. Evacuation may be DELAYED if necessary. <i>Ex: Significant trauma, unable to walk, 2° - 3° burns not more than 1-3 palm sizes.</i> <input type="checkbox"/> GREEN / PRIORITY 3 Minor Injury or illness. Non-Emergency transport <i>Ex: Sprains, strains, minor heat-related illness.</i>	
Nature of Injury or Illness & Mechanism of Injury		Brief Summary of Injury or Illness <i>(Ex: Unconscious, Struck by Falling Tree)</i>
Transport Request		Air Ambulance / Short Haul/Hoist Ground Ambulance / Other
Patient Location		Descriptive Location & Lat. / Long. (WGS84)
Incident Name		Geographic Name + "Medical" <i>(Ex: Trout Meadow Medical)</i>
On-Scene Incident Commander		Name of on-scene IC of Incident within an Incident <i>(Ex: TFLD Jones)</i>
Patient Care		Name of Care Provider <i>(Ex: EMT Smith)</i>

3. INITIAL PATIENT ASSESSMENT: Complete this section for each patient as applicable (start with the most severe patient)

Patient Assessment: See IRPG page 106

Treatment:

4. TRANSPORT PLAN:

Evacuation Location (if different): (Descriptive Location (drop point, intersection, etc.) or Lat. / Long.) Patient's ETA to Evacuation Location:

Helispot / Extraction Site Size and Hazards:

5. ADDITIONAL RESOURCES / EQUIPMENT NEEDS:

Example: Paramedic/EMT, Crews, Immobilization Devices, AED, Oxygen, Trauma Bag, IVFluid(s), Splints, Rope rescue, Wheeled litter, HAZMAT, Extrication

6. COMMUNICATIONS: Identify State Air/Ground EMS Frequencies and Hospital Contacts as applicable

Function	Channel Name/Number	Receive (RX)	Tone/NAC *	Transmit (TX)	Tone/NAC *
COMMAND					
AIR-TO-GRND					
TACTICAL					

7. CONTINGENCY: Considerations: If primary options fail, what actions can be implemented in conjunction with primary evacuation method? Be thinking ahead.

8. ADDITIONAL INFORMATION: Updates/Changes, etc.

REMEMBER: Confirm ETA's of resources ordered. Act according to your level of training. Be Alert. Keep Calm. Think Clearly. Act Decisively.

