

117°34'W 117°33'W 117°32'W

IAP Map
 Chapman Lake Fire
 WA-NES-1960
 08/22/2020

67 ac at
 08/20/2020



47°23'N

47°23'N

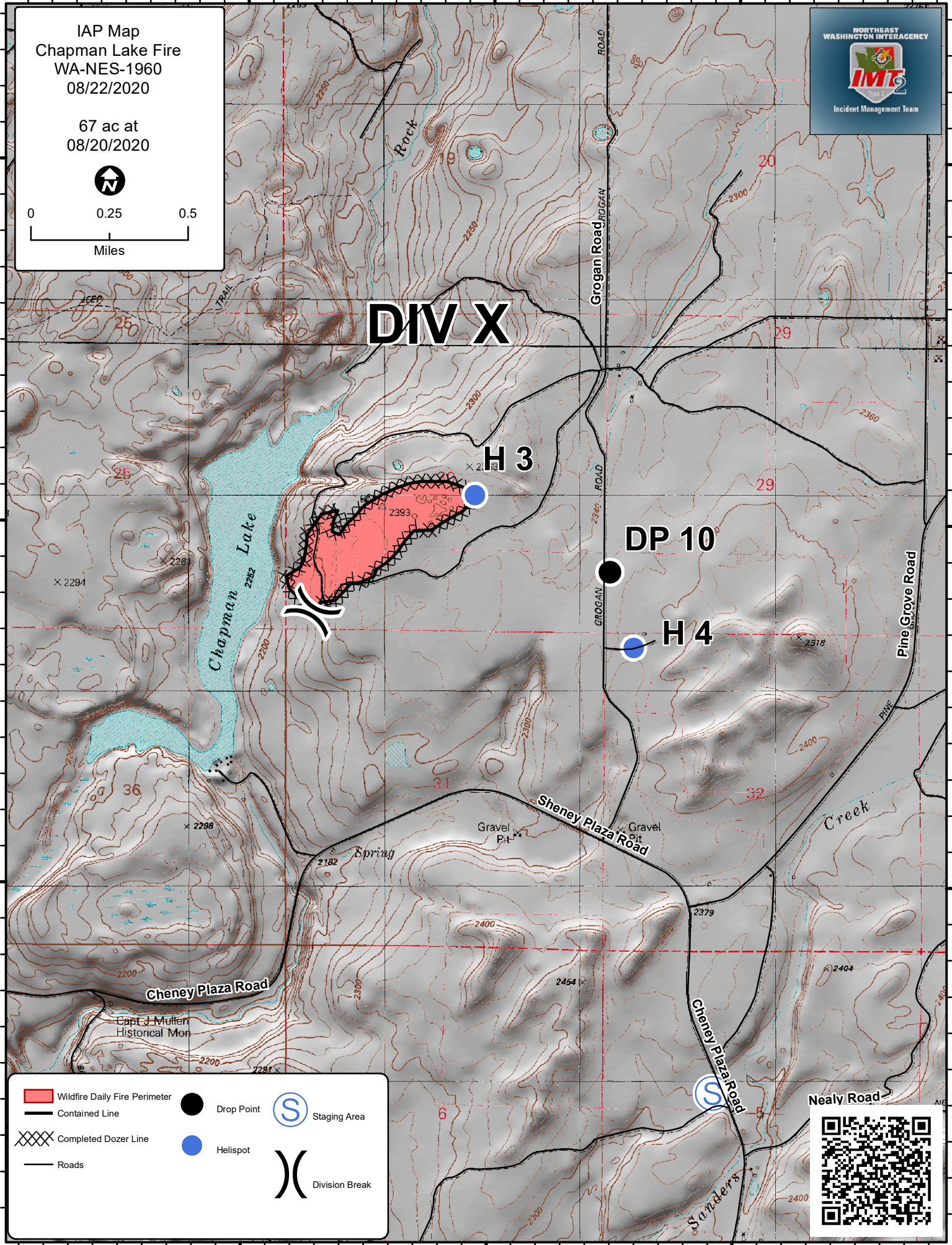
47°22'N

47°22'N

47°21'N

47°21'N

DIV X



	Wildfire Daily Fire Perimeter		Drop Point		Staging Area
	Contained Line		Helispot		Completed Dozer Line
	Completed Dozer Line		Roads		Division Break



117°34'W 117°33'W 117°32'W