

Big Hollow

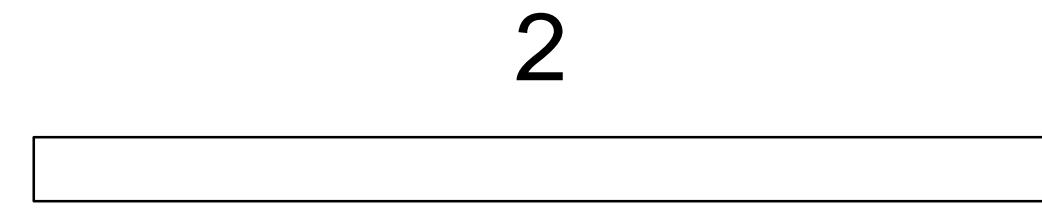
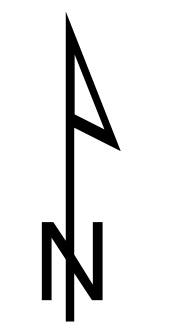
2020-WAGPF-000864

State Land Values at Risk

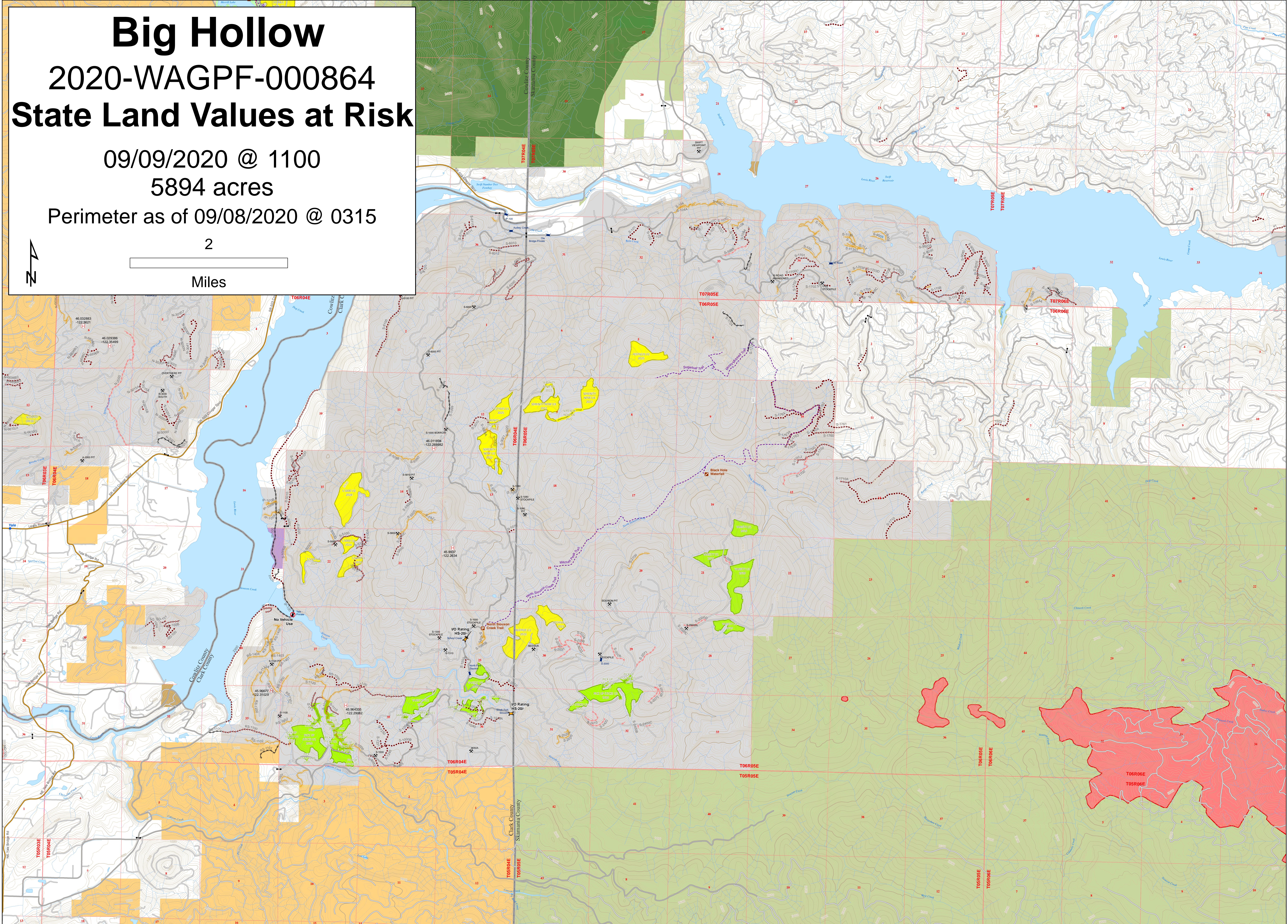
09/09/2020 @ 1100

5894 acres

Perimeter as of 09/08/2020 @ 0315



Miles



Wildfire Daily Fire Perimeter	DNR Communication Site	Boat Launch	Closed Road Barrier	Roads	Abandoned (State Lands)	County Boundaries	Non-DNR Major Public Lands
Planned Timber Harvests (Next 5 yrs)	Hellspots - Potential	Point of Interest	Bridge with Restricted Load Rating	Active or Unknown	Orphaned (State Lands)	DNR-Managed Lands	US Forest Service
Sold Timber Harvests (Last yr)	Trailhead	Closed Bridge	Closed Bridge	Closed	Pending Abandonment	NAP / NRCA	Other Federal Lands
	Non-Motorized Trails			Decommissioned	Major Timberland Ownership (Copyright Atterbury Consultants Inc.)	County, Municipal or Other Lands	Mount St Helens National Monument