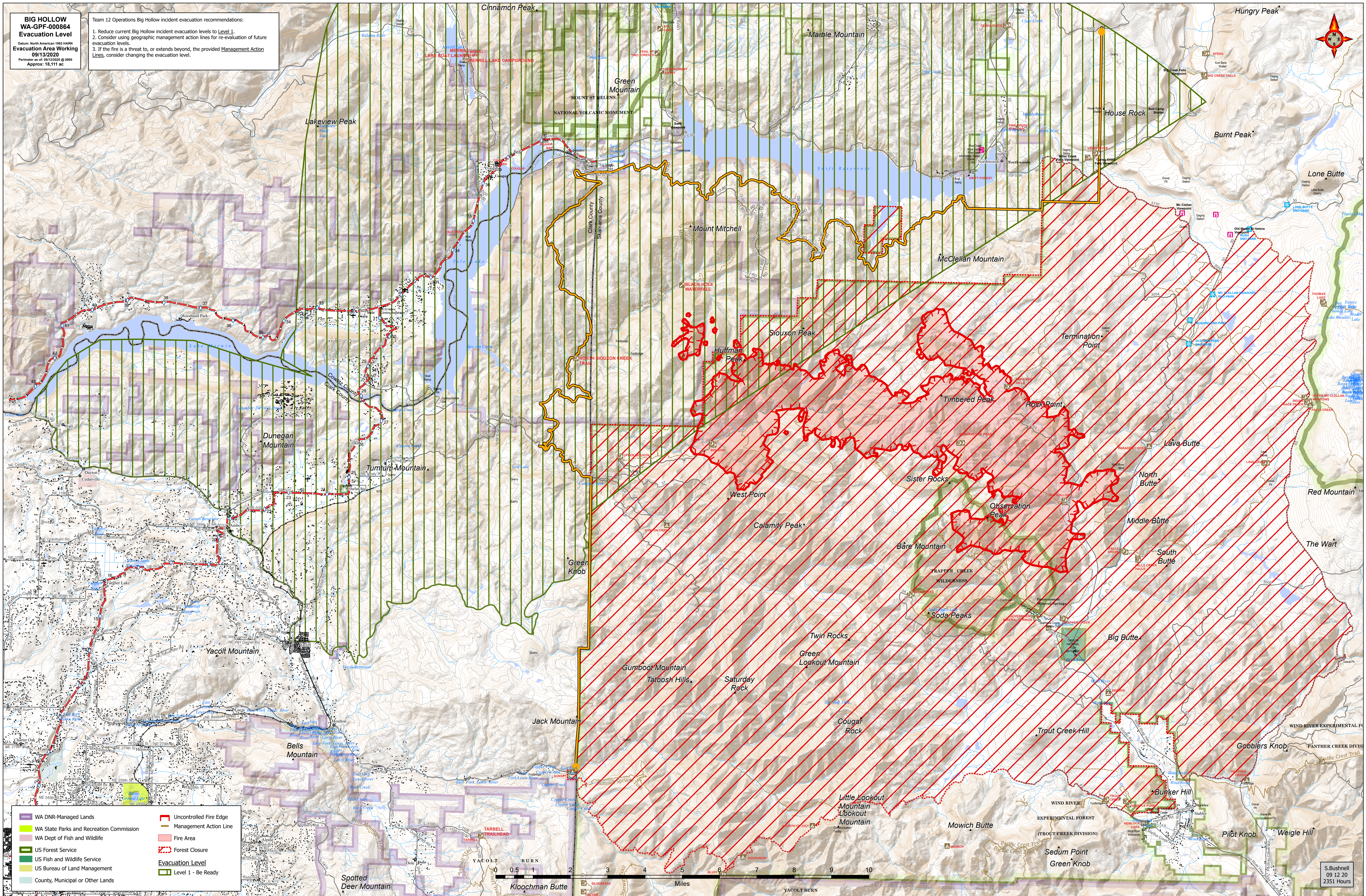


**BIG HOLLOW
WA-GPF-000864
Evacuation Level**

Datum: North American 1983 NAD83
Evacuation Area Working
09/13/2020
Perimeter as of: 09/12/2020 @ 0800
Approx: 18,111 ac

Team 12 Operations Big Hollow incident evacuation recommendations:

1. Reduce current Big Hollow incident evacuation levels to Level 1.
2. Consider using geographic management action lines for re-evaluation of future evacuation levels.
3. If the fire is a threat to, or extends beyond, the provided Management Action Lines, consider changing the evacuation level.



	WA DNR-Managed Lands		Uncontrolled Fire Edge
	WA State Parks and Recreation Commission		Management Action Line
	WA Dept of Fish and Wildlife		Fire Area
	US Forest Service		Forest Closure
	US Fish and Wildlife Service		Evacuation Level
	US Bureau of Land Management		Level 1 - Be Ready
	County, Municipal or Other Lands		



S. Bushnell
09/12/20
2351 Hours