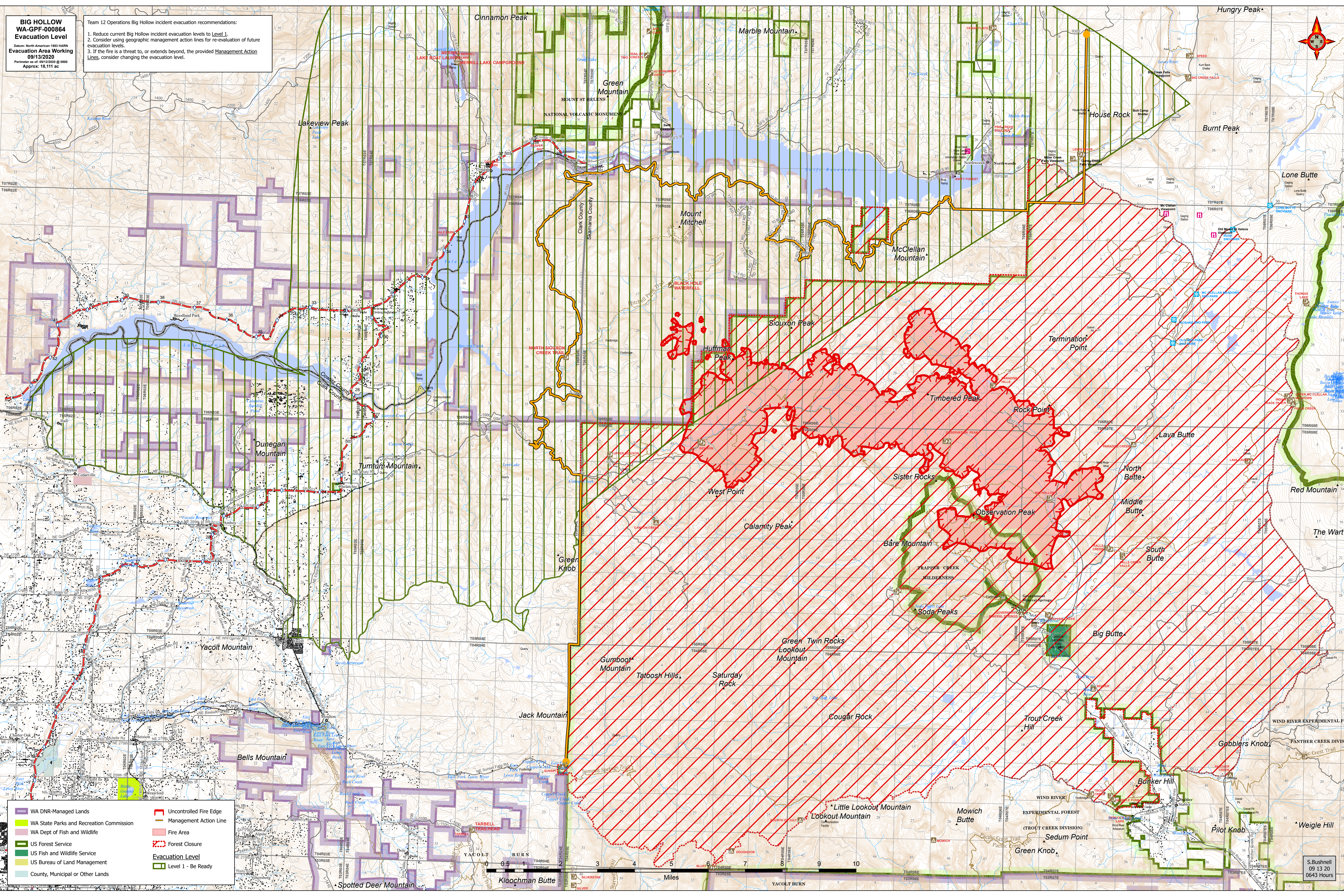


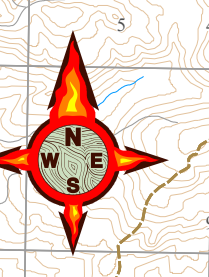
**BIG HOLLOW  
WA-GPF-000864  
Evacuation Level**

Source: North American 1983 HARR  
Evacuation Area Working  
09/13/2020  
Perimeter as of: 09/13/2020 @ 0800  
Approx: 18,111 ac

- Team 12 Operations Big Hollow incident evacuation recommendations:
1. Reduce current Big Hollow incident evacuation levels to Level 1.
  2. Consider using geographic management action lines for re-evaluation of future evacuation levels.
  3. If the fire is a threat to, or extends beyond, the provided Management Action Lines, consider changing the evacuation level.



WA DNR-Managed Lands	Uncontrolled Fire Edge
WA State Parks and Recreation Commission	Management Action Line
WA Dept of Fish and Wildlife	Fire Area
US Forest Service	Forest Closure
US Fish and Wildlife Service	<b>Evacuation Level</b>
US Bureau of Land Management	Level 1 - Be Ready
County, Municipal or Other Lands	



S. Bushnell  
09/13/20  
0643 Hours