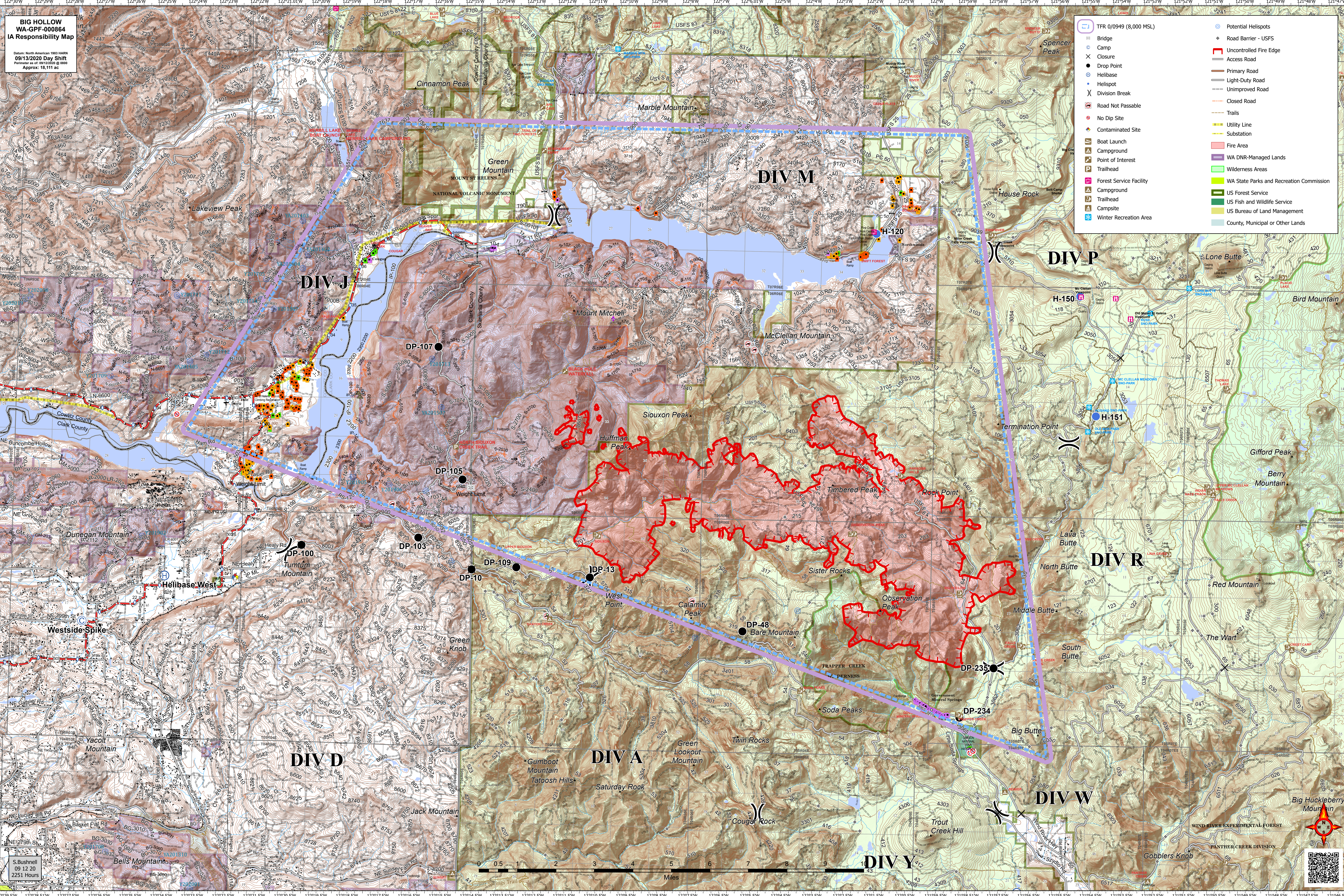


**BIG HOLLOW
WA-GPF-000864
IA Responsibility Map**

Datum: North American 1983 NAD83
09/13/2020 Day Shift
Perimeter as of: 09/12/2020 @ 0800
Approx: 18,111 ac

- TR 0/0949 (8,000 MSL)
- Bridge
- Camp
- Closure
- Drop Point
- Helibase
- Helispot
- Division Break
- Road Not Passable
- No Dip Site
- Contaminated Site
- Boat Launch
- Campground
- Point of Interest
- Trailhead
- Forest Service Facility
- Campground
- Trailhead
- Campsite
- Winter Recreation Area
- Potential Helispots
- Road Barrier - USFS
- Uncontrolled Fire Edge
- Access Road
- Primary Road
- Light-Duty Road
- Unimproved Road
- Closed Road
- Trails
- Utility Line
- Substation
- Fire Area
- WA DNR-Managed Lands
- Wilderness Areas
- WA State Parks and Recreation Commission
- US Forest Service
- US Fish and Wildlife Service
- US Bureau of Land Management
- County, Municipal or Other Lands



S. Bushnell
09 12 20
2251 Hours

0 0.5 1 2 3 4 5 6 7 8 9 Miles

