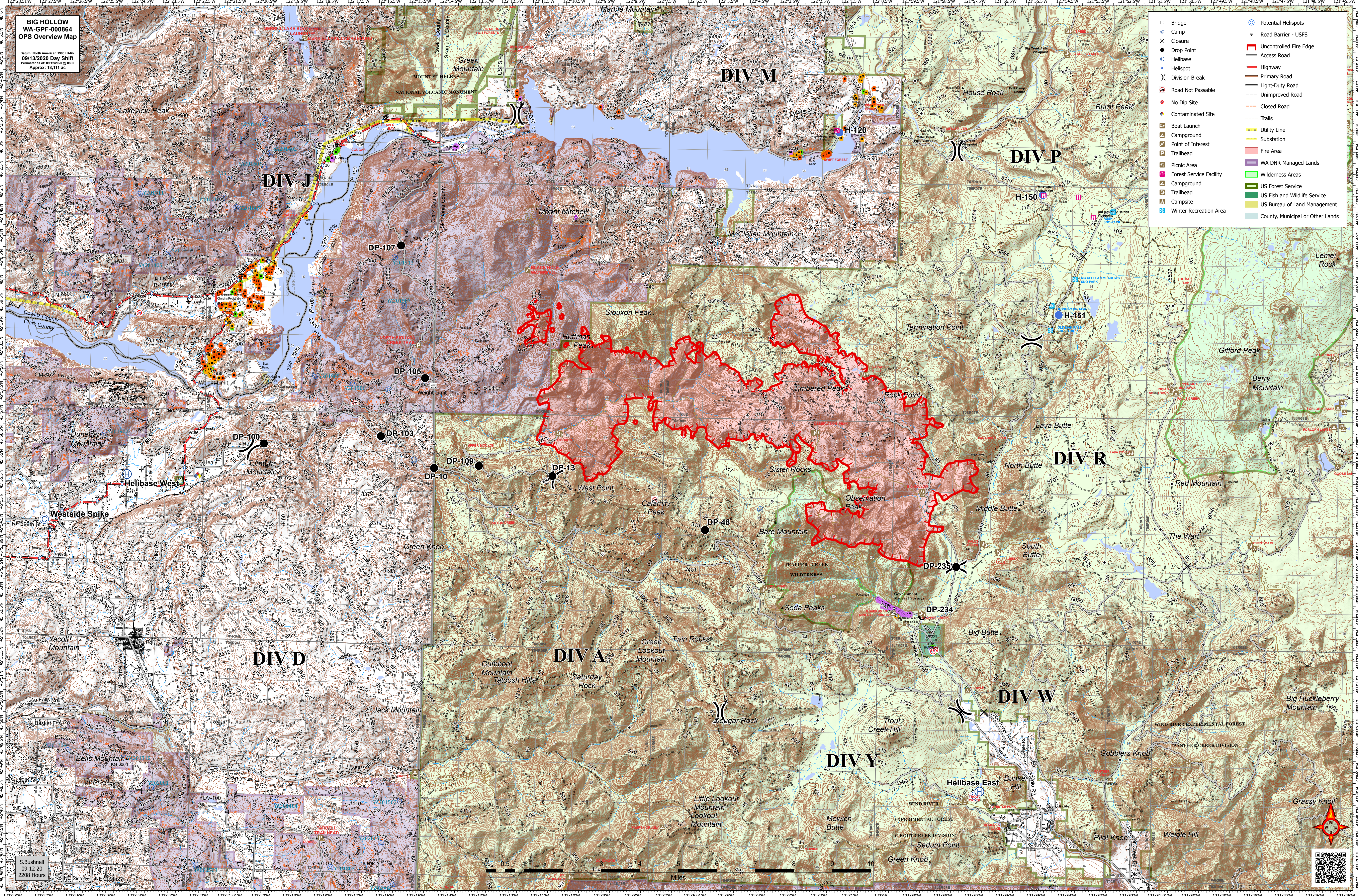


**BIG HOLLOW
WA-GPF-000864
OPS Overview Map**

Datum: North American 1983 HARN
09/13/2020 Day Shift
Perimeter as of: 09/13/2020 @ 0800
Approx: 18,111 ac

| | | | |
|--|-------------------------|--|----------------------------------|
| | Bridge | | Potential Helisports |
| | Camp | | Road Barrier - USFS |
| | Closure | | Uncontrolled Fire Edge |
| | Helibase | | Access Road |
| | Division Break | | Highway |
| | No Dip Site | | Primary Road |
| | Contaminated Site | | Light-Duty Road |
| | Boat Launch | | Unimproved Road |
| | Campground | | Closed Road |
| | Point of Interest | | Trails |
| | Trailhead | | Utility Line |
| | Picnic Area | | Substation |
| | Forest Service Facility | | Fire Area |
| | Campground | | WA DNR-Managed Lands |
| | Campsite | | Wilderness Areas |
| | Winter Recreation Area | | US Forest Service |
| | | | US Fish and Wildlife Service |
| | | | US Bureau of Land Management |
| | | | County, Municipal or Other Lands |



S. Bushnell
09 12 20
2208 Hours

