

**BIG HOLLOW**  
**WA-GPF-000864**  
**Public Information Map**

**09/13/2020 Day Shift**  
**Approx: 18,111 ac**

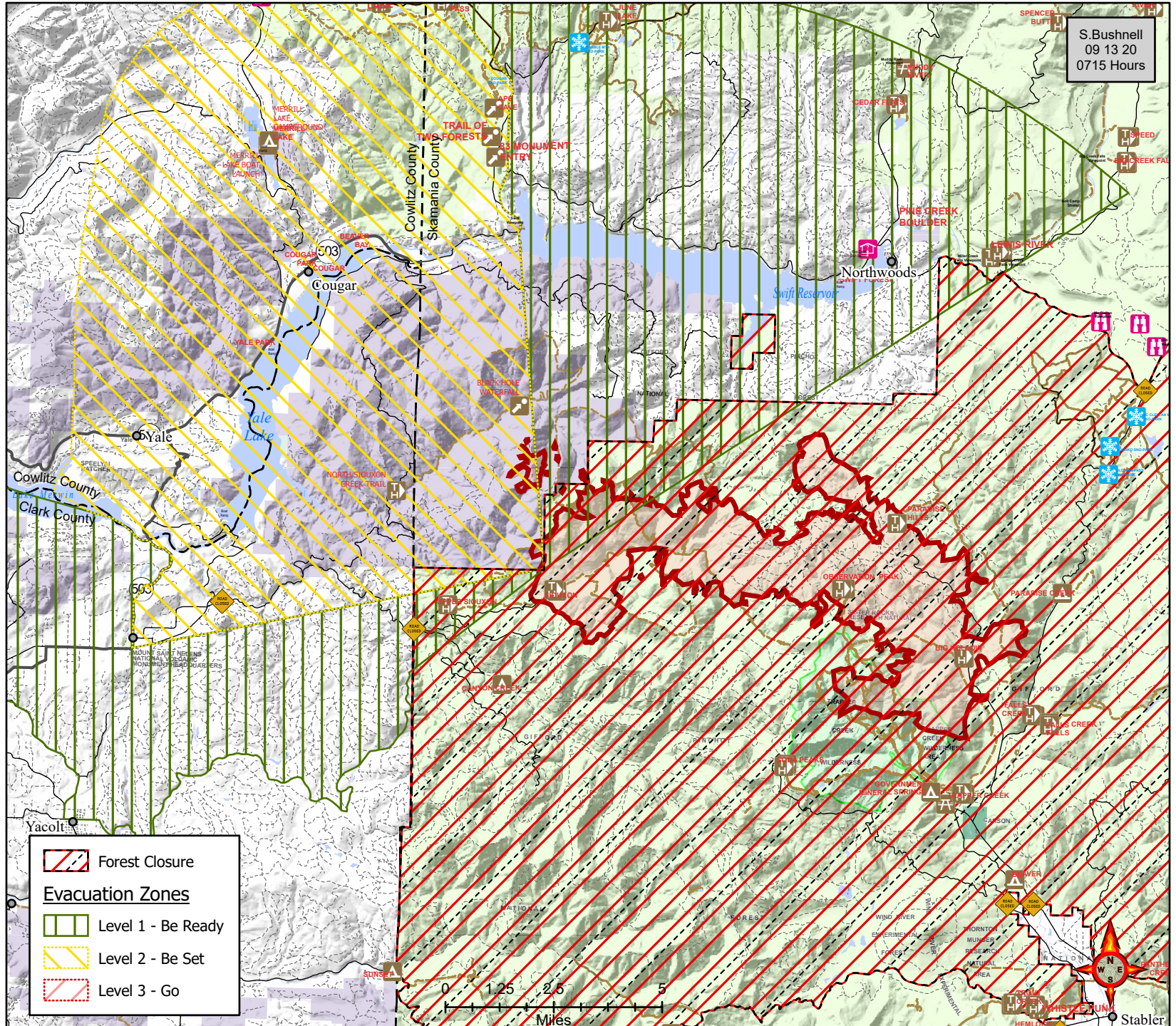
-  Road Closure
-  Fire Area
-  Light-Duty Road
-  Unimproved Road
-  WA DNR-Managed Lands
-  Wilderness Areas
-  US Forest Service
-  US Fish and Wildlife Service
-  US Bureau of Land Management
-  County, Municipal or Other Lands







**Disclaimer:**

While NW IMT12 makes every effort to represent the data shown on these maps as completely and accurately as possible, no warranty is given, expressed or implied, as to the accuracy, reliability, or completeness of these data. In addition, NW IMT12 and/or other participating agencies shall not be held liable for improper or incorrect use of the data described and/or contained herein. Graphical representations provided by the use of this data does not represent any legal description of the data herein and are provided only as a general representation of the data. No indication/statement of fire containment is given, expressed or implied by this product.

**More Information:**  
<http://inciweb.nwgc.gov>



S. Bushnell  
 09 13 20  
 0715 Hours

-  Forest Closure
- Evacuation Zones**
-  Level 1 - Be Ready
-  Level 2 - Be Set
-  Level 3 - Go

0 1.25 2.5 5  
 Miles



Stabler