



**BIG HOLLOW
WA-GPF-000864
Public Information Map**

09/13/2020 Day Shift
Approx: 18,111 ac

The level 2 evacuation on the Big Hollow Fire has been reduced to a level 1 as of 9/13/2020 at 5:00 PM. Existing level 1 and the level 3 evacuations (at Government Mineral Springs cabins) remain unchanged.

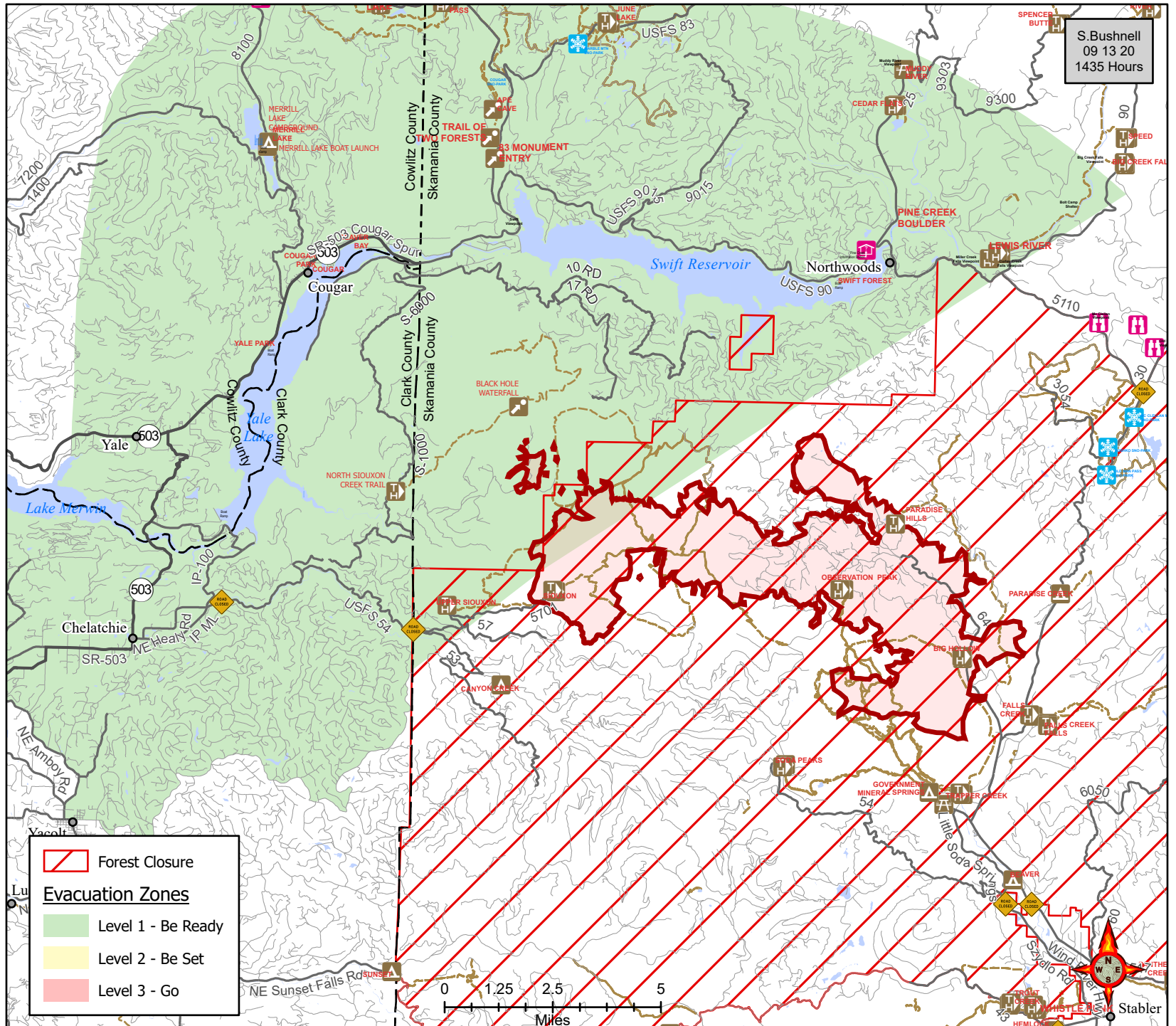
-  Road Closure
-  Fire Area




Disclaimer:

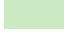


While NW IMT12 makes every effort to represent the data shown on these maps as completely and accurately as possible, no warranty is given, expressed or implied, as to the accuracy, reliability, or completeness of these data. In addition, NW IMT12 and/or other participating agencies shall not be held liable for improper or incorrect use of the data described and/or contained herein. Graphical representations provided by the use of this data does not represent any legal description of the data herein and are provided only as a general representation of the data. No indication/statement of fire containment is given, expressed or implied by this product.

More Information:
<http://inciweb.nwcg.gov>



 Forest Closure

Evacuation Zones

-  Level 1 - Be Ready
-  Level 2 - Be Set
-  Level 3 - Go



S. Bushnell
09 13 20
1435 Hours

