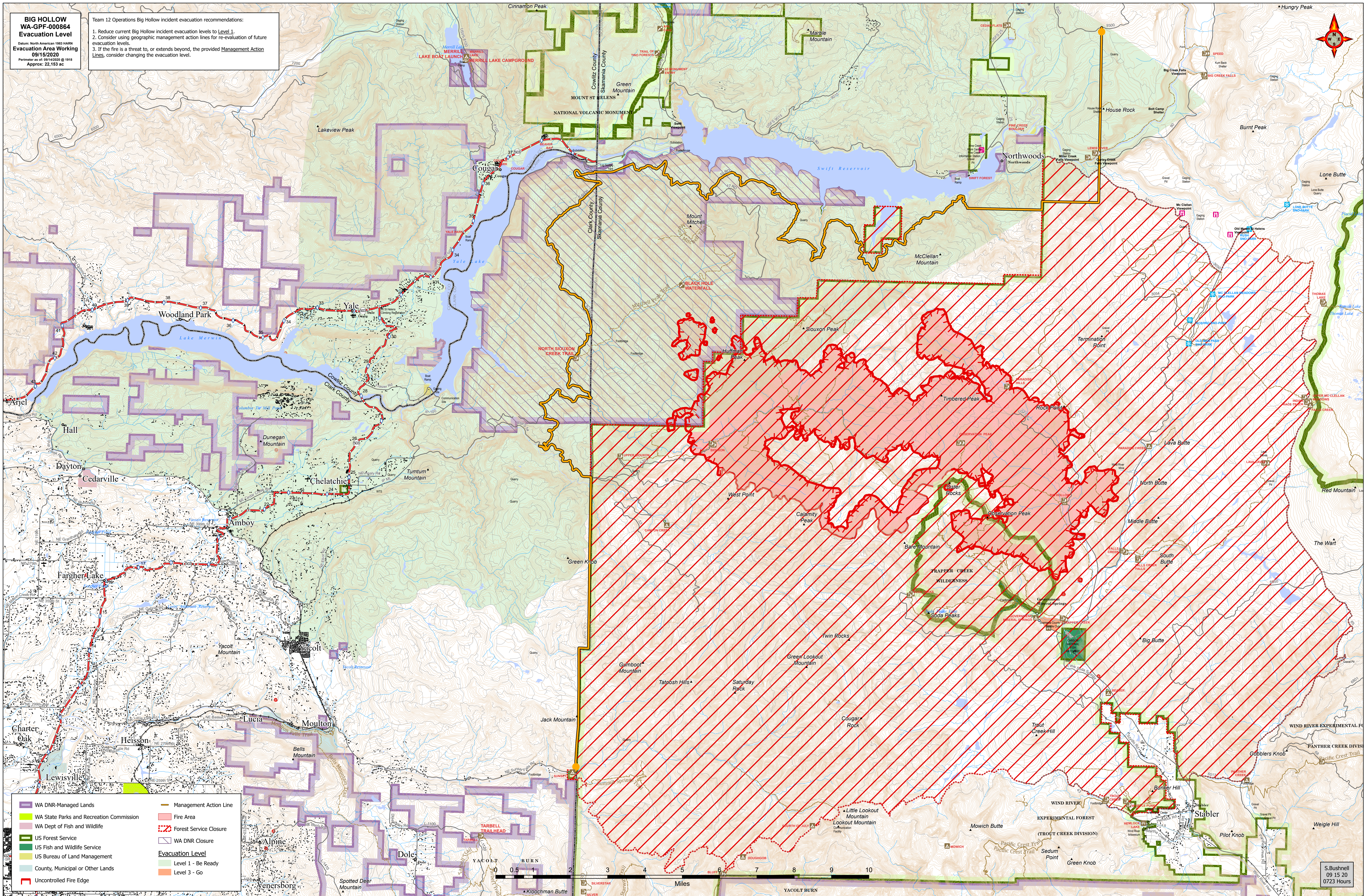


**BIG HOLLOW  
WA-GPF-000864  
Evacuation Level**

Origin: North American 1983 NAD83  
Evacuation Area Working  
09/15/2020  
Perimeter as of: 09/14/2020 @ 1918  
Approx: 22,153 ac

Team 12 Operations Big Hollow incident evacuation recommendations:

1. Reduce current Big Hollow incident evacuation levels to **Level 1**.
2. Consider using geographic management action lines for re-evaluation of future evacuation levels.
3. If the fire is a threat to, or extends beyond, the provided **Management Action Lines**, consider changing the evacuation level.



WA DNR-Managed Lands	Management Action Line
WA State Parks and Recreation Commission	Forest Service Closure
WA Dept of Fish and Wildlife	WA DNR Closure
US Forest Service	<b>Evacuation Level</b>
US Fish and Wildlife Service	Level 1 - Be Ready
US Bureau of Land Management	Level 3 - Go
County, Municipal or Other Lands	
Uncontrolled Fire Edge	

S. Bushnell  
09/15/20  
07:23 Hours