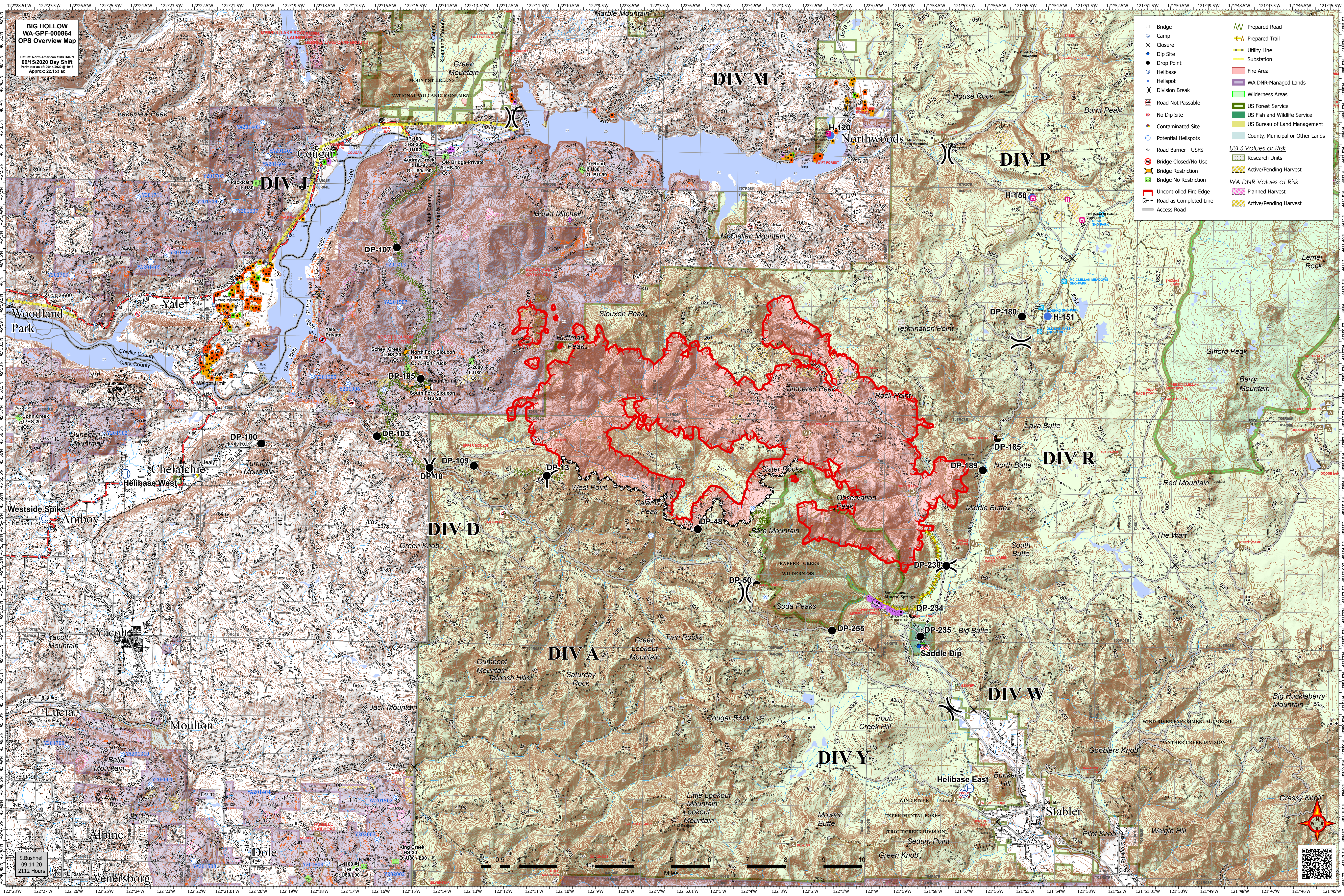


**BIG HOLLOW  
WA-GPF-000864  
OPS Overview Map**

Datum: North American 1983 NAD83  
09/15/2020 Day Shift  
Portion as of: 09/14/2020 @ 1915  
Approx: 22,153 ac

- Bridge
- Camp
- Closure
- Dip Site
- Drop Point
- Helibase
- Helispot
- Division Break
- Road Not Passable
- No Dip Site
- Contaminated Site
- Potential Helispots
- Road Barrier - USFS
- Bridge Closed/No Use
- Bridge Restriction
- Bridge No Restriction
- Uncontrolled Fire Edge
- Road as Completed Line
- Access Road
- Prepared Road
- Prepared Trail
- Utility Line
- Substation
- Fire Area
- WA DNR-Managed Lands
- Wilderness Areas
- US Forest Service
- US Fish and Wildlife Service
- US Bureau of Land Management
- County, Municipal or Other Lands
- USFS Values at Risk
  - Research Units
  - Active/Pending Harvest
- WA DNR Values at Risk
  - Planned Harvest
  - Active/Pending Harvest



S. Bushnell  
09 14 20  
2112 Hours

