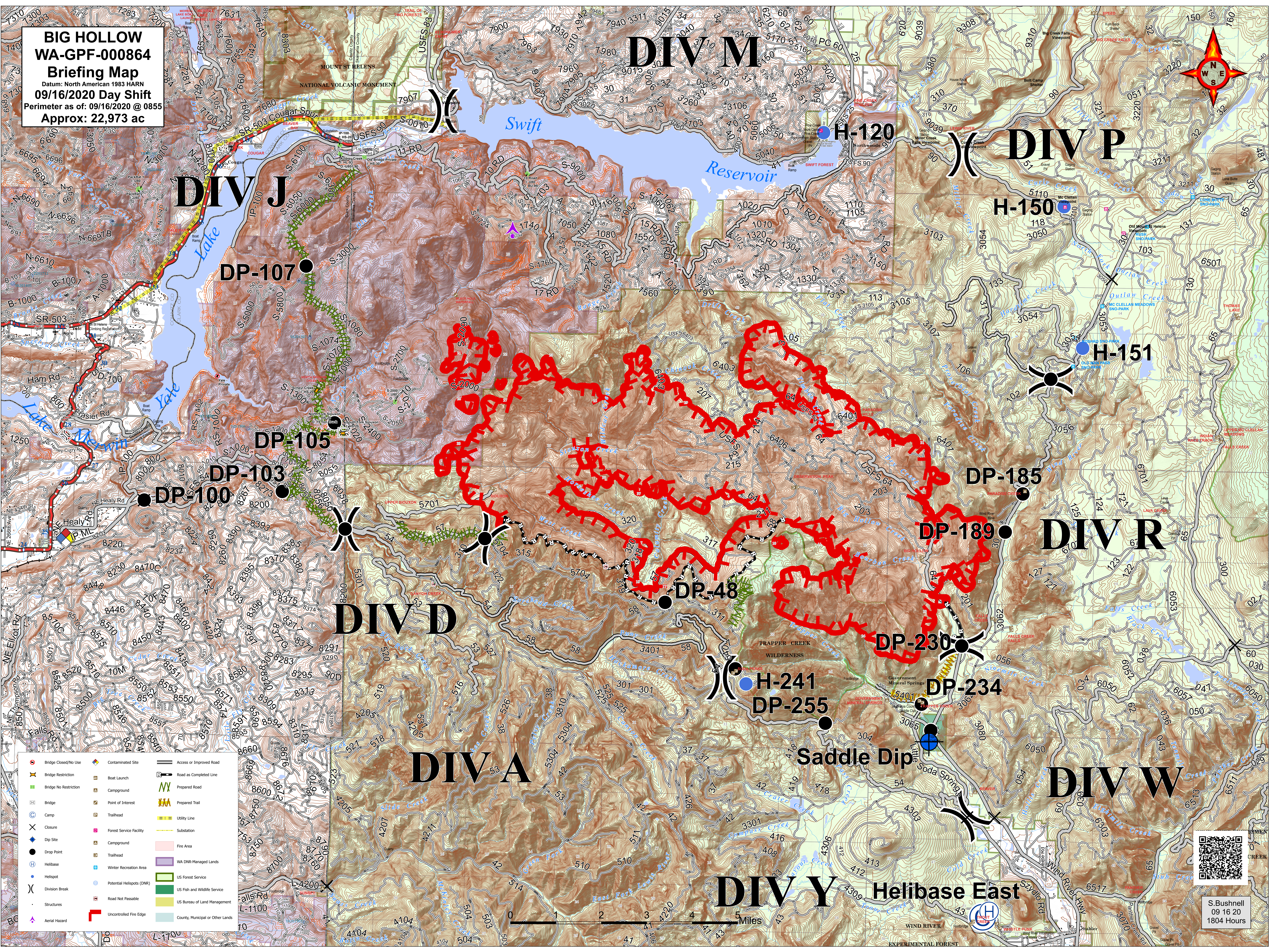
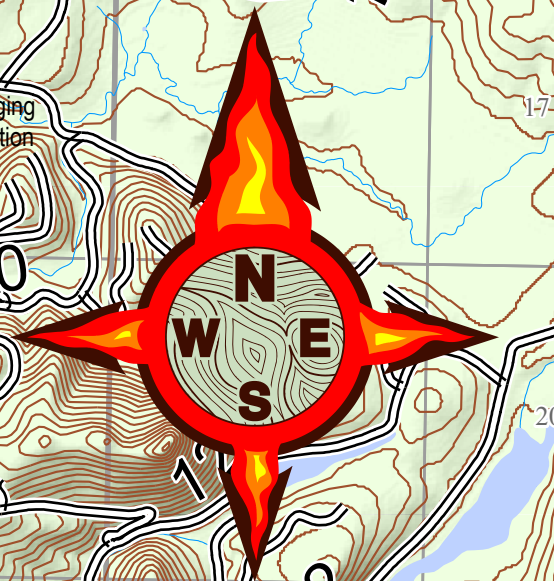


BIG HOLLOW
WA-GPF-000864
Briefing Map
 Datum: North American 1983 HARN
09/16/2020 Day Shift
 Perimeter as of: 09/16/2020 @ 0855
 Approx: 22,973 ac



DIV J

DIV M

DIV P

DP-107

H-150

H-151

DP-105

DP-185

DP-100

DP-103

DP-189

DIV R

DP-48

DP-230

DIV D

H-241
DP-255

DP-234

Saddle Dip

DIV W

DIV A

DIV Y

Helibase East

| | | | | | |
|--|-----------------------|--|----------------------------------|--|------------------------------|
| | Bridge Closed/No Use | | Contaminated Site | | Access or Improved Road |
| | Bridge Restriction | | Boat Launch | | Road as Completed Line |
| | Bridge No Restriction | | Campground | | Prepared Road |
| | Camp | | Point of Interest | | Prepared Trail |
| | Closure | | Forest Service Facility | | Utility Line |
| | Dip Site | | Campground | | Substation |
| | Drop Point | | Trailhead | | Fire Area |
| | Helibase | | Winter Recreation Area | | WA DNR-Managed Lands |
| | Helipoint | | Potential Helispots (DNR) | | US Forest Service |
| | Division Break | | Road Not Passable | | US Fish and Wildlife Service |
| | Structures | | Uncontrolled Fire Edge | | US Bureau of Land Management |
| | Aerial Hazard | | County, Municipal or Other Lands | | |



S. Bushnell
 09 16 20
 1804 Hours

