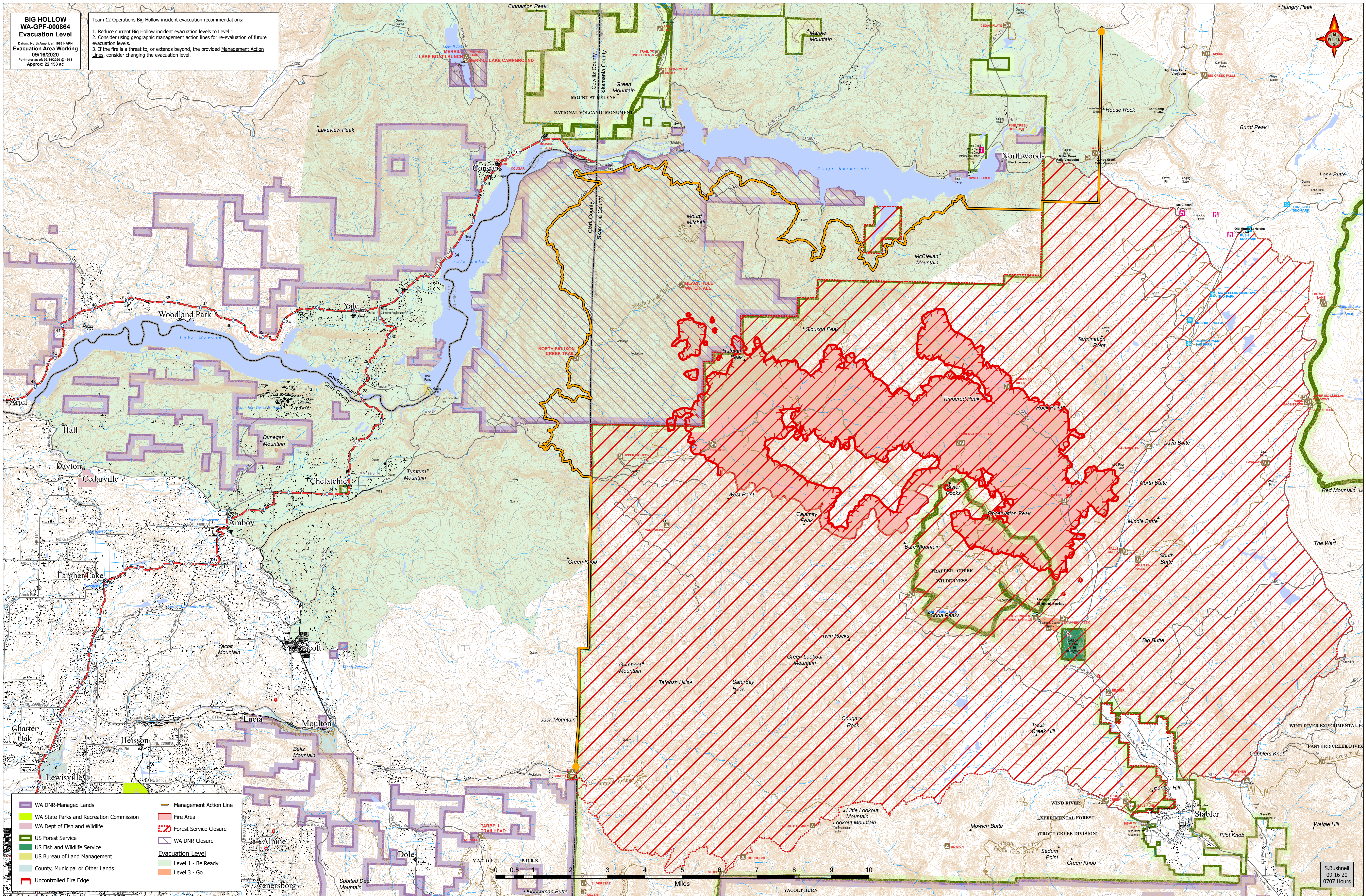


**BIG HOLLOW
WA-GPF-000864
Evacuation Level**

Origin: North American 1983 NAD83
Evacuation Area Working
09/16/2020
Perimeter as of: 09/14/2020 @ 1918
Approx: 22,153 ac

Team 12 Operations Big Hollow incident evacuation recommendations:

1. Reduce current Big Hollow incident evacuation levels to **Level 1**.
2. Consider using geographic management action lines for re-evaluation of future evacuation levels.
3. If the fire is a threat to, or extends beyond, the provided **Management Action Lines**, consider changing the evacuation level.



WA DNR-Managed Lands	Management Action Line
WA State Parks and Recreation Commission	Fire Area
WA Dept of Fish and Wildlife	Forest Service Closure
US Forest Service	WA DNR Closure
US Fish and Wildlife Service	Evacuation Level
US Bureau of Land Management	Level 1 - Be Ready
County, Municipal or Other Lands	Level 3 - Go
Uncontrolled Fire Edge	

S. Bushnell
09/16/20
07:07 Hours