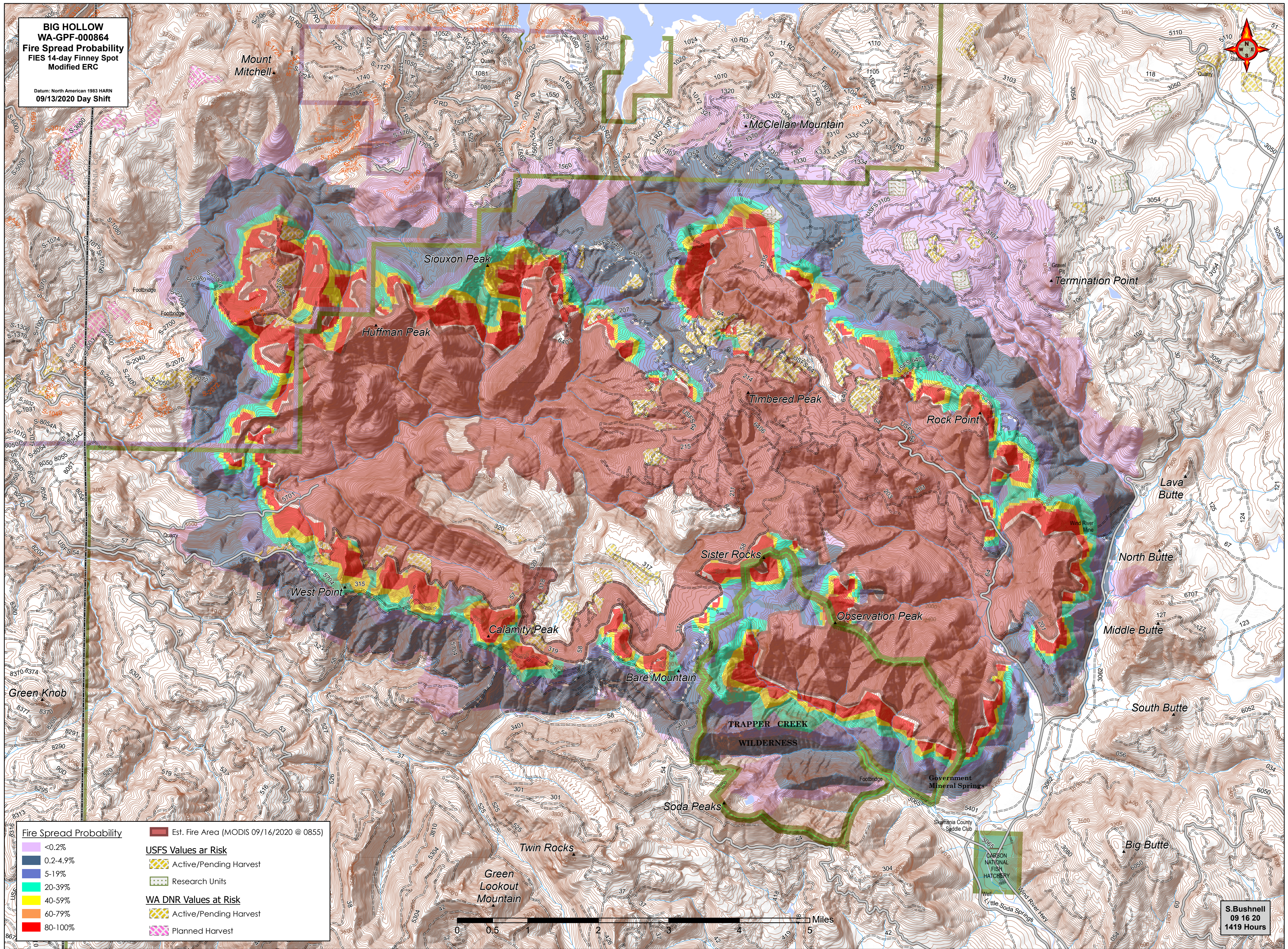
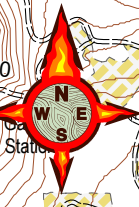
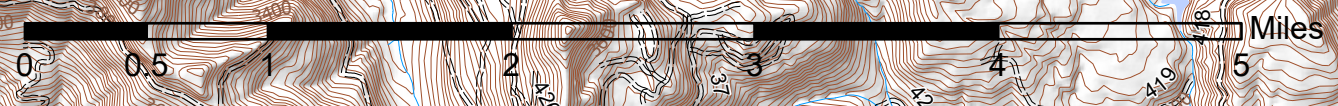


**BIG HOLLOW
WA-GPF-000864
Fire Spread Probability
FIES 14-day Finney Spot
Modified ERC**

Datum: North American 1983 HARN
09/13/2020 Day Shift



| | |
|--------------------------------|--|
| Fire Spread Probability | ■ Est. Fire Area (MODIS 09/16/2020 @ 0855) |
| ■ <0.2% | USFS Values at Risk |
| ■ 0.2-4.9% | ■ Active/Pending Harvest |
| ■ 5-19% | ■ Research Units |
| ■ 20-39% | WA DNR Values at Risk |
| ■ 40-59% | ■ Active/Pending Harvest |
| ■ 60-79% | ■ Planned Harvest |
| ■ 80-100% | |



S. Bushnell
09 16 20
1419 Hours