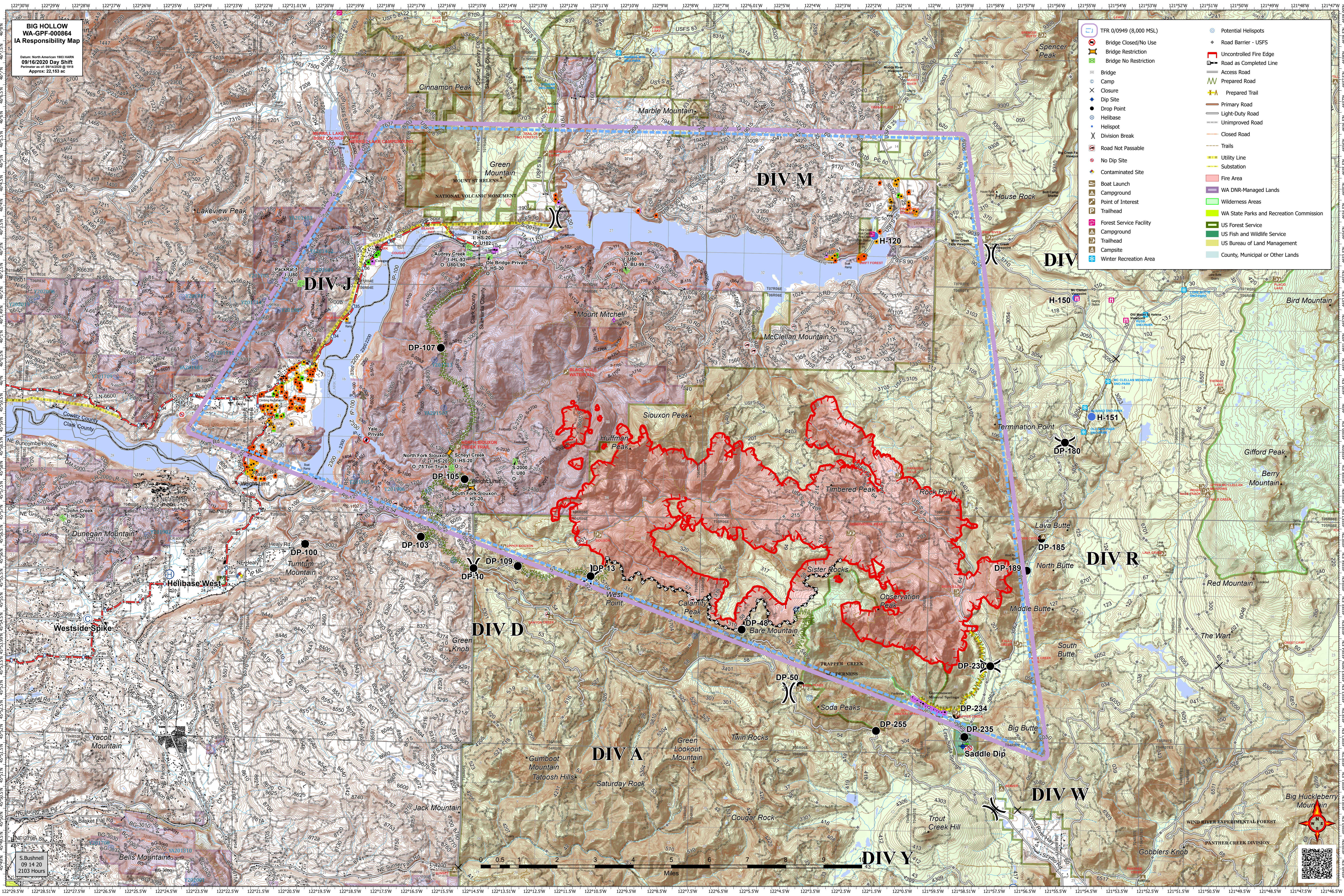


**BIG HOLLOW  
WA-GPF-000864  
IA Responsibility Map**

Datum: North American 1983 NAD83  
09/16/2020 Day Shift  
Portion as of: 09/14/2020 @ 1915  
Approx: 22,153 ac

S. Bushnell  
09/14/20  
2103 Hours

	TFR 0/0949 (8,000 MSL)		Potential Helispots
	Bridge Closed/No Use		Road Barrier - USFS
	Bridge Restriction		Uncontrolled Fire Edge
	Bridge No Restriction		Road as Completed Line
	Bridge		Access Road
	Camp		Prepared Road
	Closure		Prepared Trail
	Dip Site		Primary Road
	Drop Point		Light-Duty Road
	Helibase		Unimproved Road
	Helispot		Closed Road
	Division Break		Trails
	Road Not Passable		Utility Line
	No Dip Site		Substation
	Contaminated Site		Fire Area
	Boat Launch		WA DNR-Managed Lands
	Campground		Wilderness Areas
	Point of Interest		WA State Parks and Recreation Commission
	Trailhead		US Forest Service
	Forest Service Facility		US Fish and Wildlife Service
	Campground		US Bureau of Land Management
	Trailhead		County, Municipal or Other Lands
	Campsite		
	Winter Recreation Area		



0 0.5 1 2 3 4 5 6 7 8 9 Miles

