

BIG HOLLOW
WA-GPF-00864
OPS Map
DIV M, DIV P
Datum: North American 1983 NAD83
09/16/2020 Day Shift
Prepared as of: 09/14/2020 @ 1918
Approx: 22,153 ac

- ✕ Closure
- Drop Point
- Helispot
- ⌵ Division Break
- ⊕ Potential Helispots
- ⊘ Bridge Closed/No Use
- ⊘ Bridge Restriction
- ⊘ Bridge No Restriction
- ⊘ Uncontrolled Fire Edge
- ⊘ Access Road
- ⊘ Prepared Road
- ⊘ Prepared Trail
- ⊘ Utility Line
- ⊘ Substation
- ⊘ Structures
- ⊘ Fire Area
- USFS Values at Risk**
- ⊘ Active/Pending Harvest
- ⊘ Research Units
- WA DNR Values at Risk**
- ⊘ Planned Harvest
- ⊘ Active/Pending Harvest

TRAIL OF
WO FORESTS

83 MONUMENT
ENTRY

Swift
Viewpoint

Powerhouse

Log Sorting
Yard

Ole Bridge-Private
I: HS-30

Mount Mitchell

BLACK HOLE
WATERFALL

Footbridge

Footbridge

Huffman Peak

Siouxon Peak

Timbered Peak

PARADISE HILLS

Rock Point

OBSERVATION PEAK

Lava Butte

DIV M

DIV P

H-120

Northwoods

Northwoods

Boat Ramp

SWIFT FOREST

Pine Creek
Work Center

Pine Creek
Information Station

Gravel Pit

Gaging Station

Miller Creek
Falls Viewpoint

Curley Creek
Falls Viewpoint

House Rock
Shelter

House Rock

Quarry

Bolt Camp
Shelter

Mc Clellan
Viewpoint

H-150

Gaging Station

Quarry

Old Mount's
Viewpoint

RUSH
SNO-PARK

MC CLELLAN MEADOW
SNO-PARK

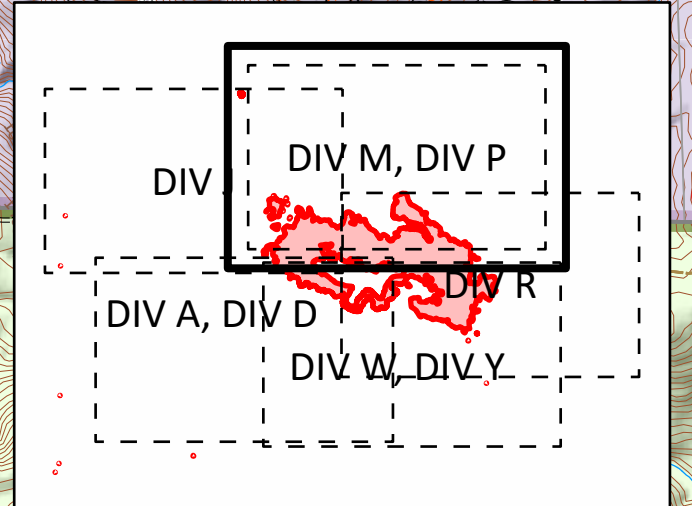
KOSHKO SNO-PARK

H-151

OLD MAN PASS
SNO-PARK

DP-180

DP-185



S. Bushnell
09 15 20
2125 Hours

Miles