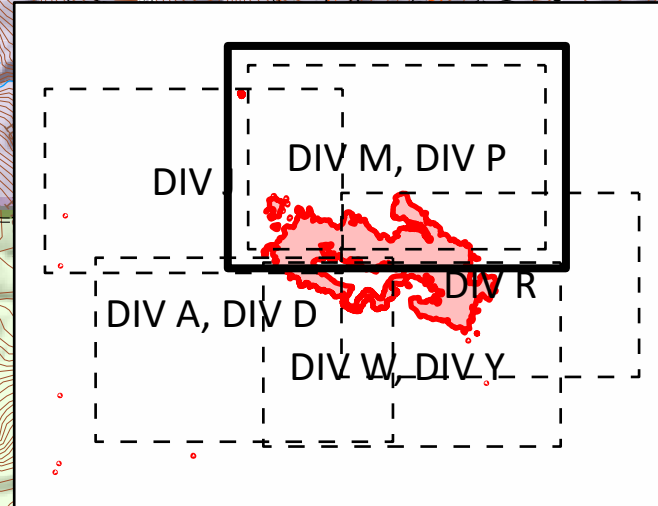


BIG HOLLOW
WA-GPF-00864
OPS Map
DIV M, DIV P
Datum: North American 1983 HARN
09/16/2020 Day Shift
Prepared as of: 09/16/2020 @ 1918
Approx: 22,153 ac

- ✕ Closure
- Drop Point
- Helispot
- ✂ Division Break
- ⊙ Potential Helispots
- ⊘ Bridge Closed/No Use
- ⊘ Bridge Restriction
- ⊘ Bridge No Restriction
- ⊘ Uncontrolled Fire Edge
- ⊘ Access Road
- ⊘ Prepared Road
- ⊘ Prepared Trail
- Utility Line
- Substation
- Structures
- Fire Area
- USFS Values at Risk
- Active/Pending Harvest
- Research Units
- WA DNR Values at Risk
- Planned Harvest
- Active/Pending Harvest



S. Bushnell
09 16 20
0918 Hours

DIV M

DIV P

Northwoods

SWIFT FOREST

PINE CREEK BOULDER

LEWIS RIVER

Mount Mitchell

McClellan Mountain

Huffman Peak

Timbered Peak

PARADISE HILLS

Rock Point

OBSERVATION PEAK

Mc Clellan Viewpoint

Old Mount's Viewpoint

MC CLELLAN MEADOW

KOSHKO SNO-PARK

OLD MAN PASS SNO-PARK

DP-180

DP-185

Lava Butte

PARADISE CREEK

Miles

