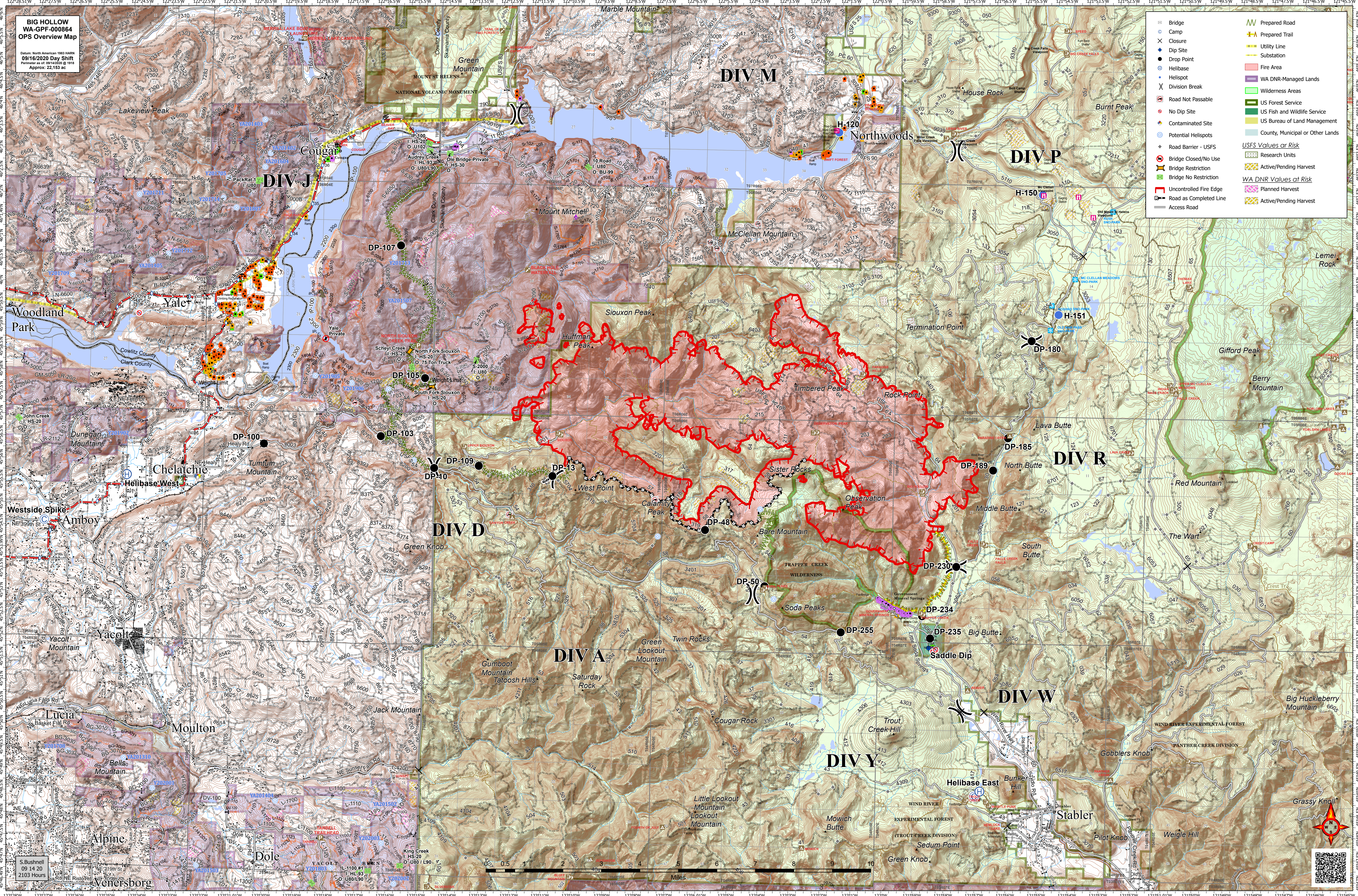


**BIG HOLLOW
WA-GPF-000864
OPS Overview Map**

Datum: North American 1983 NAD83
09/16/2020 Day Shift
Perimeter as of: 09/14/2020 @ 1915
Approx: 22,153 ac

Bridge	Prepared Road
Camp	Prepared Trail
Closure	Utility Line
Dip Site	Substation
Drop Point	Fire Area
Helibase	WA DNR-Managed Lands
Helispot	Wilderness Areas
Division Break	US Forest Service
Road Not Passable	US Fish and Wildlife Service
No Dip Site	US Bureau of Land Management
Contaminated Site	County, Municipal or Other Lands
Potential Helispots	USFS Values at Risk
Road Barrier - USFS	Research Units
Bridge Closed/No Use	Active/Pending Harvest
Bridge Restriction	WA DNR Values at Risk
Bridge No Restriction	Planned Harvest
Uncontrolled Fire Edge	Active/Pending Harvest
Road as Completed Line	Access Road



S. Bushnell
09 14 20
2103 Hours

