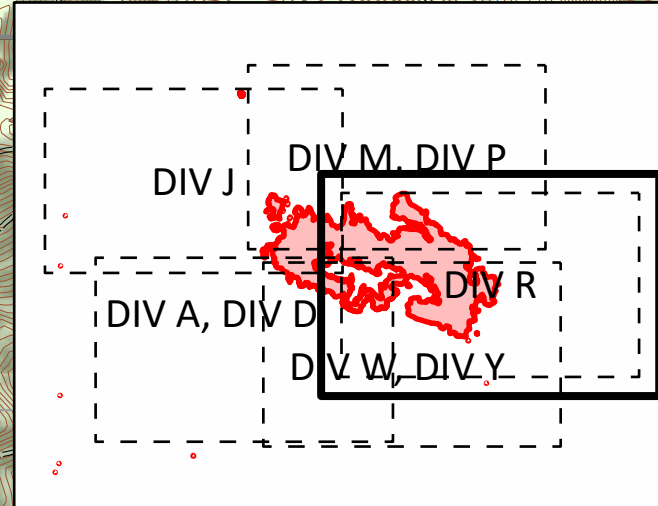
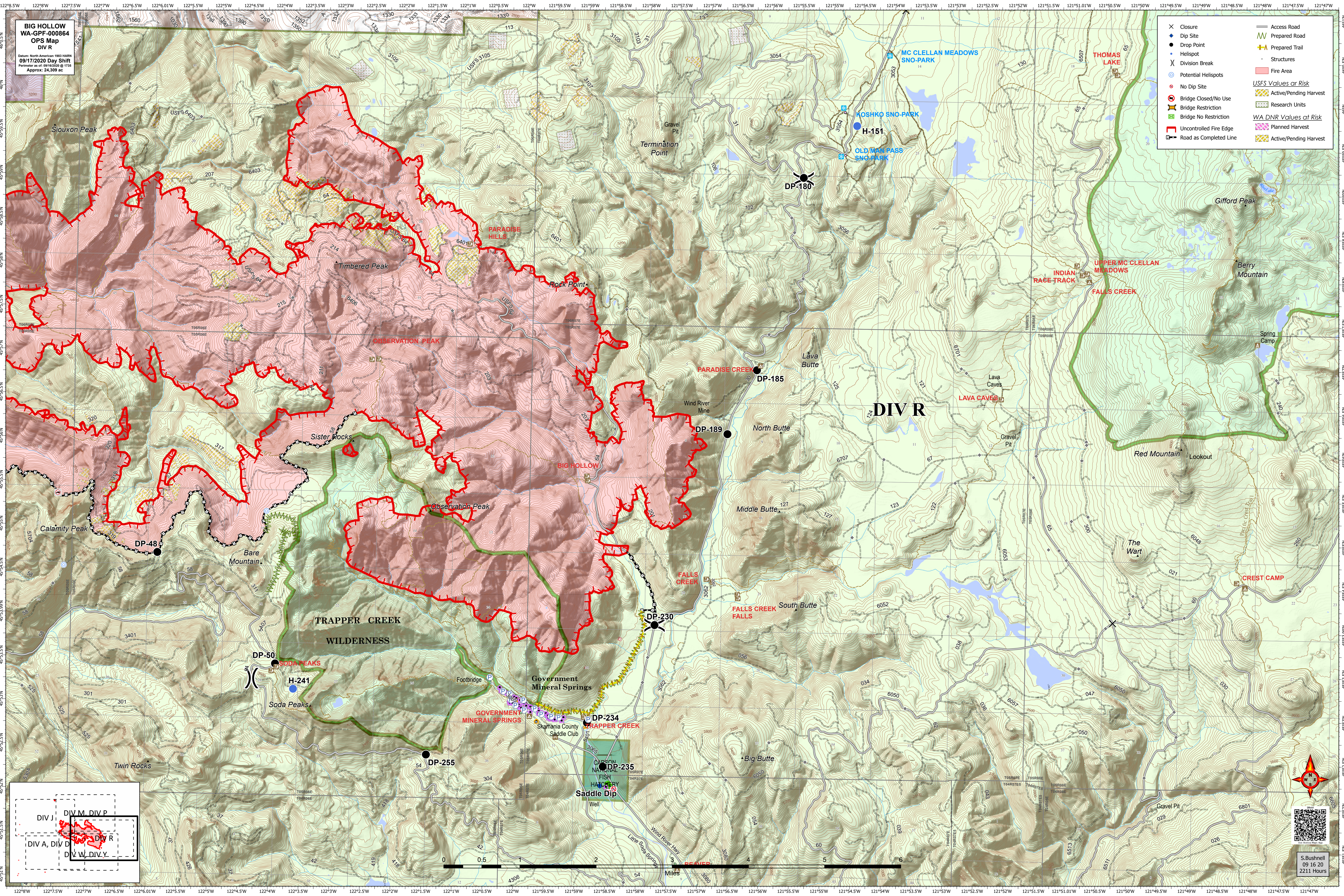


BIG HOLLOW
WA-GPF-000864
OPS Map
DIV R

Date: North American 1983 HARN
09/17/2020 Day Shift
Partner as of: 09/16/2020 @ 1735
Approx: 24,309 ac

- × Closure
- Dip Site
- Drop Point
- Helipoint
- ⌵ Division Break
- Potential Helispots
- No Dip Site
- ⊘ Bridge Closed/No Use
- ⊘ Bridge Restriction
- ⊘ Bridge No Restriction
- ⊘ Uncontrolled Fire Edge
- ⊘ Road as Completed Line
- Access Road
- Prepared Road
- Prepared Trail
- Structures
- Fire Area
- USFS Values at Risk
 - Active/Pending Harvest
 - Research Units
- WA DNR Values at Risk
 - Planned Harvest
 - Active/Pending Harvest



S. Bushnell
09 16 20
2211 Hours