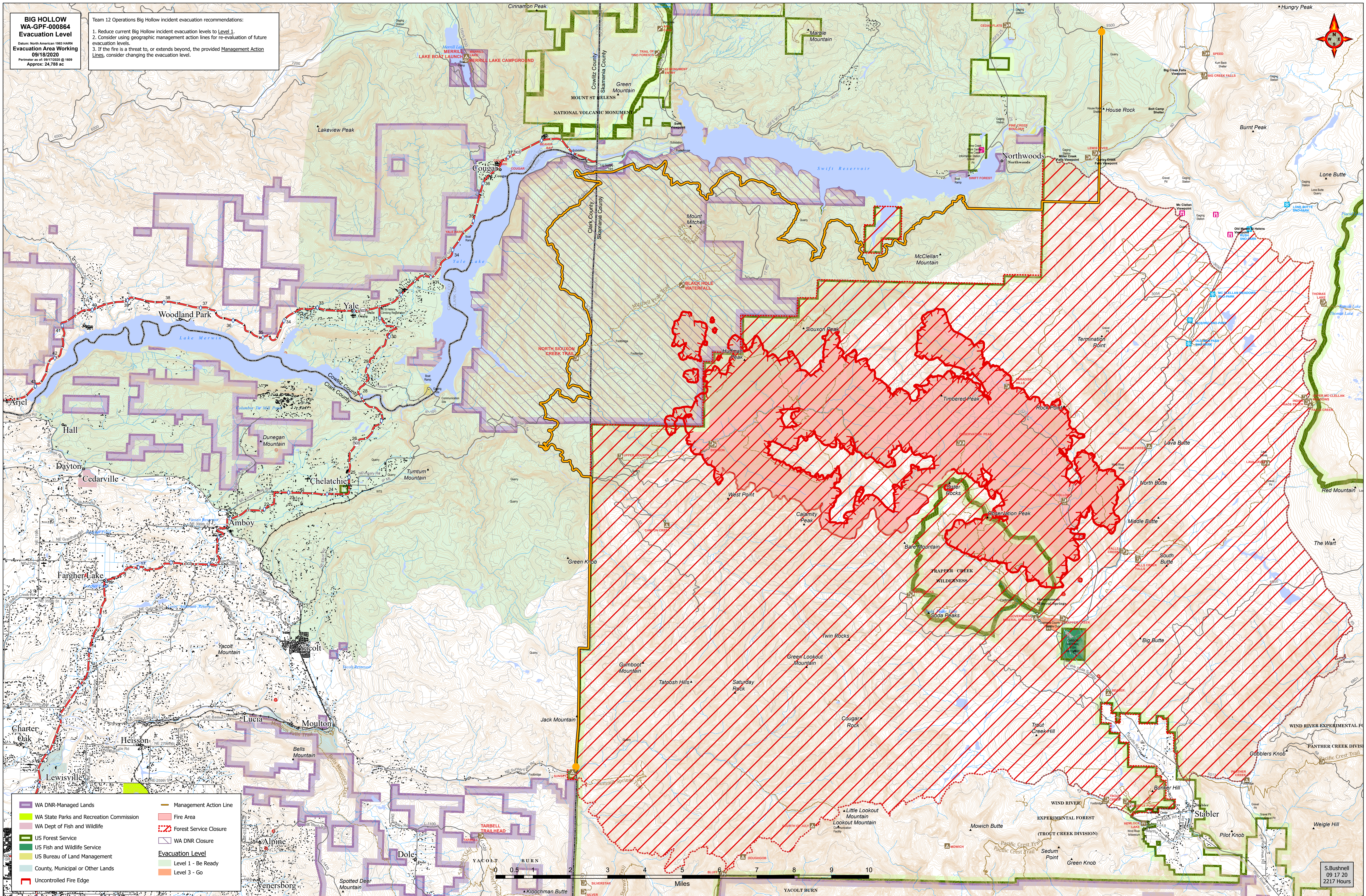


**BIG HOLLOW
WA-GPF-000864
Evacuation Level**

Datum: North American 1983 NAD83
Evacuation Area Working
09/18/2020
Perimeter as of: 09/17/2020 @ 1609
Approx: 24,788 ac

Team 12 Operations Big Hollow incident evacuation recommendations:

1. Reduce current Big Hollow incident evacuation levels to Level 1.
2. Consider using geographic management action lines for re-evaluation of future evacuation levels.
3. If the fire is a threat to, or extends beyond, the provided Management Action Lines, consider changing the evacuation level.



	WA DNR-Managed Lands		Management Action Line
	WA State Parks and Recreation Commission		Fire Area
	WA Dept of Fish and Wildlife		Forest Service Closure
	US Forest Service		WA DNR Closure
	US Fish and Wildlife Service		
	US Bureau of Land Management		
	County, Municipal or Other Lands		
	Uncontrolled Fire Edge		
		Evacuation Level	
			Level 1 - Be Ready
			Level 3 - Go