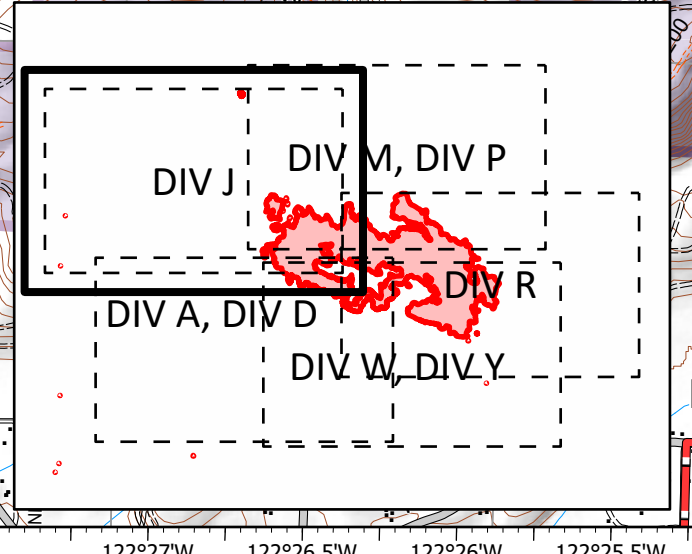


**BIG HOLLOW**  
WA-GPF-000864  
OPS Map  
DIV J

Date: North American 1983 Mean  
09/18/2020 Day Shift  
Perimeter as of 09/17/2020 @ 1400  
Approx: 24,788 ac

- Bridge
  - Closure
  - Drop Point
  - Helibase
  - Spot Fire
  - Division Break
  - Potential Helispots
  - No Dip Site
  - Contaminated Site
  - Bridge Closed/No Use
  - Bridge Restriction
  - Bridge No Restriction
  - Uncontrolled Fire Edge
  - Completed Hand Line
  - Road as Completed Line
  - Access Road
  - Prepared Road
  - Prepared Trail
  - Utility Line
  - Substation
  - Structures
  - Fire Area
- USFS Values at Risk**
- Active/Pending Harvest
  - Research Units
- WA DNR Values at Risk**
- Planned Harvest
  - Active/Pending Harvest



S. Bushnell  
09 17 20  
2211 Hours