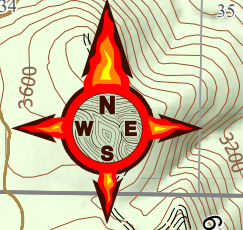
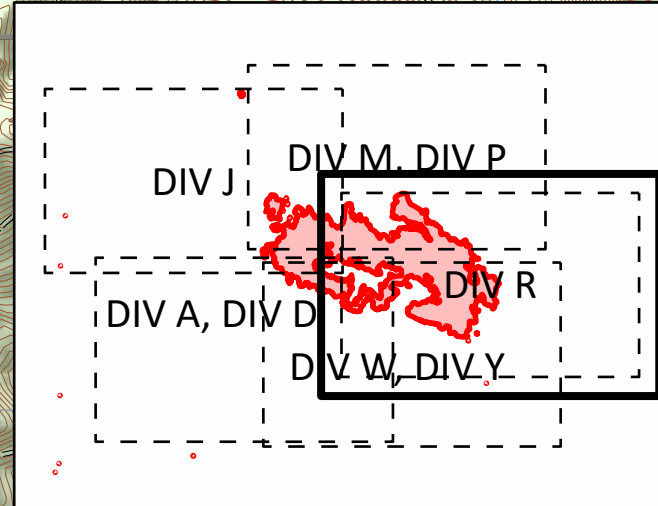


**BIG HOLLOW**  
WA-GPF-000864  
OPS Map  
DIV R

Date: North American 1983 datum  
09/18/2020 Day Shift  
Partner as of: 09/17/2020 @ 1609  
Approx: 24,788 ac

- × Closure
- Dip Site
- Drop Point
- Heliport
- Spot Fire
- × Division Break
- Potential Heliports
- No Dip Site
- ⚠ Bridge Closed/No Use
- ⚠ Bridge Restriction
- ⚠ Bridge No Restriction
- ⚠ Uncontrolled Fire Edge
- ⚠ Road as Completed Line
- Access Road
- Prepared Road
- Prepared Trail
- Structures
- Fire Area
- USFS Values at Risk
  - Active/Pending Harvest
  - Research Units
- WA DNR Values at Risk
  - Planned Harvest
  - Active/Pending Harvest



S. Bushnell  
09 17 20  
2212 Hours

