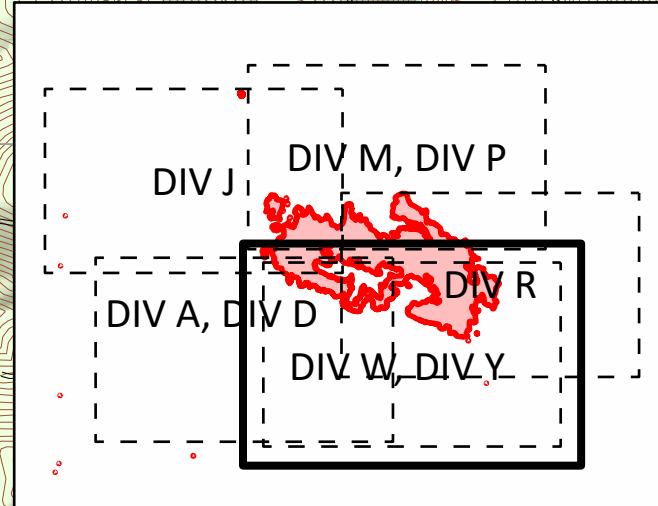


BIG HOLLOW
WA-GPF-000864
OPS Map
DIV W, DIV Y

Datum: North American 1983 HARN
09/18/2020 Day Shift
Particular as of: 09/17/2020 @ 1609
Approx: 24,788 ac

- | | | | |
|--|------------------------|--|------------------------|
| | Camp | | Road as Completed Line |
| | Closure | | Access Road |
| | Dip Site | | Prepared Road |
| | Drop Point | | Prepared Trail |
| | Helibase | | Structures |
| | Helispot | | Fire Area |
| | Spot Fire | | USFS Values at Risk |
| | Division Break | | Active/Pending Harvest |
| | Potential Helispots | | Research Units |
| | No Dip Site | | WA DNR Values at Risk |
| | Bridge Closed/No Use | | Planned Harvest |
| | Bridge Restriction | | Active/Pending Harvest |
| | Bridge No Restriction | | |
| | Uncontrolled Fire Edge | | |



North arrow and QR code.

S. Bushnell
09 17 20
2213 Hours

