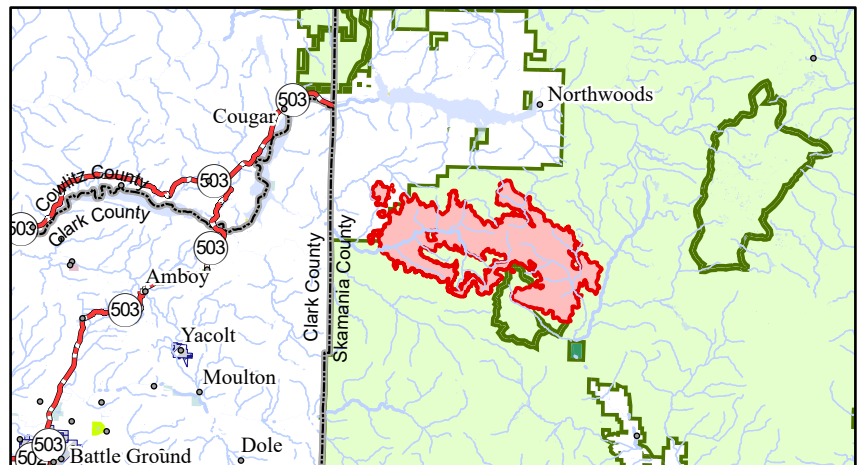
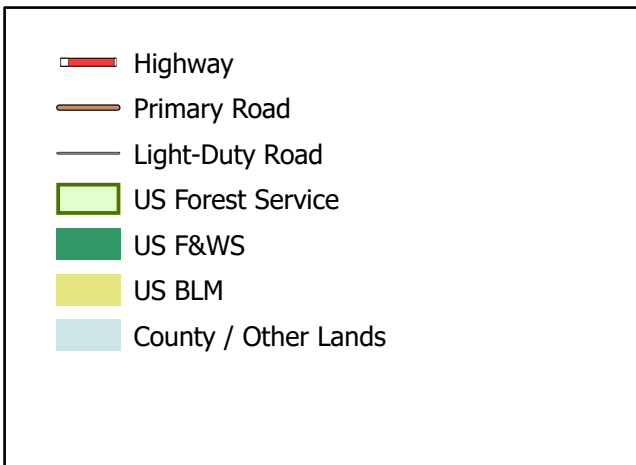
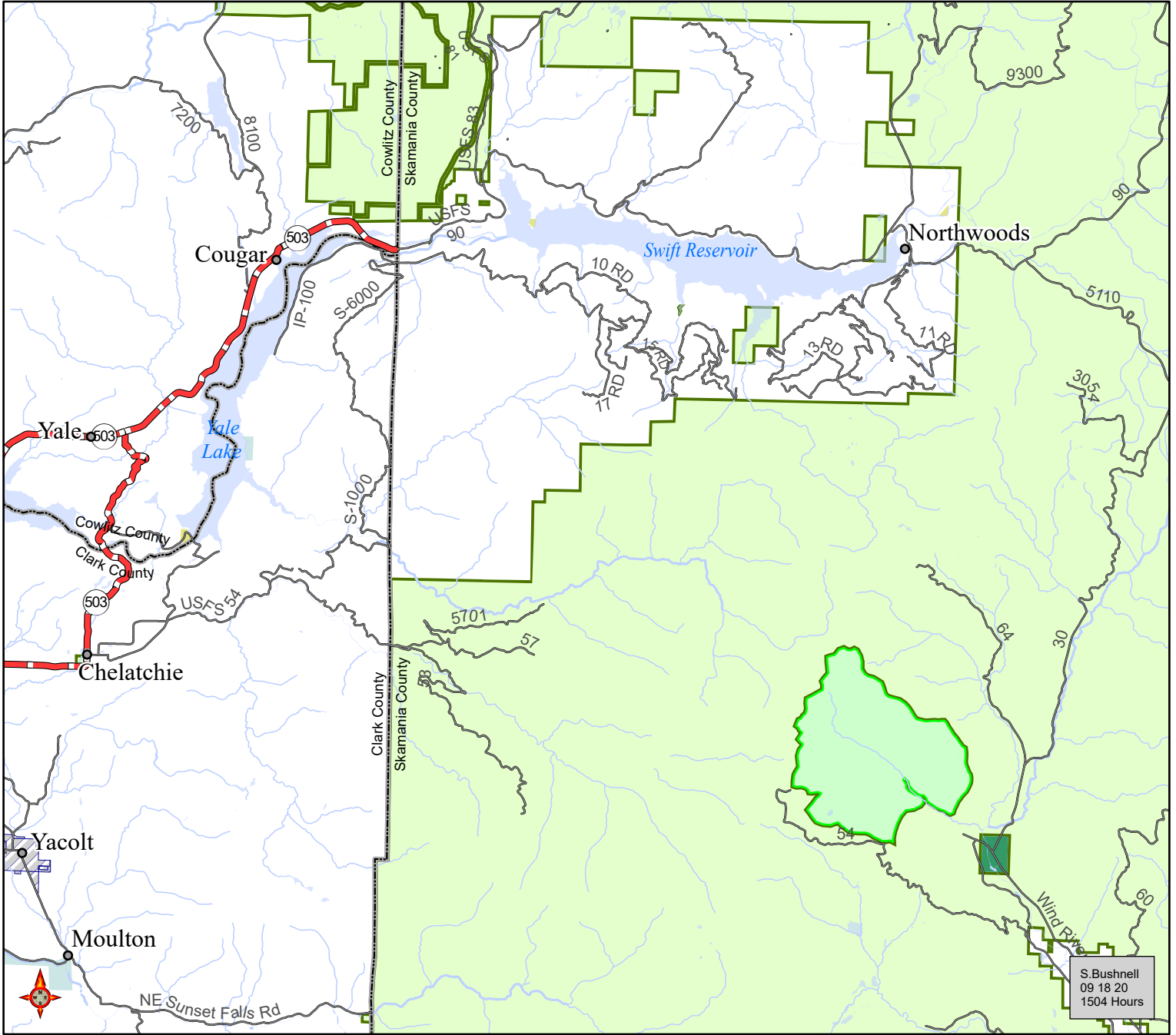
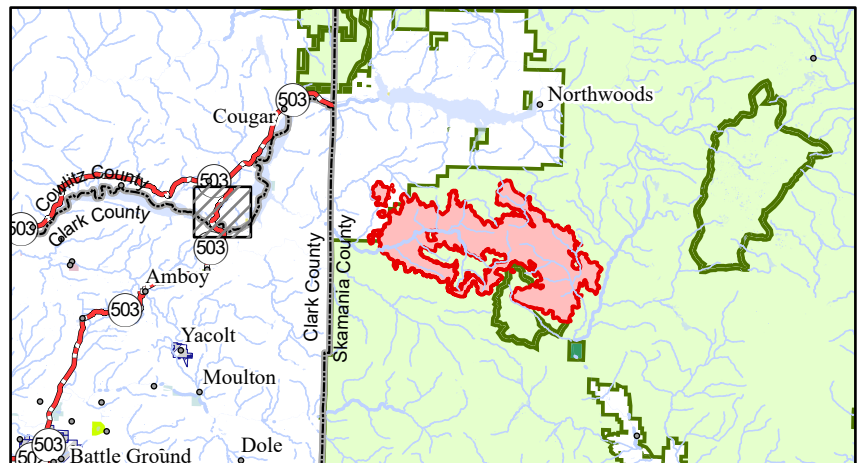
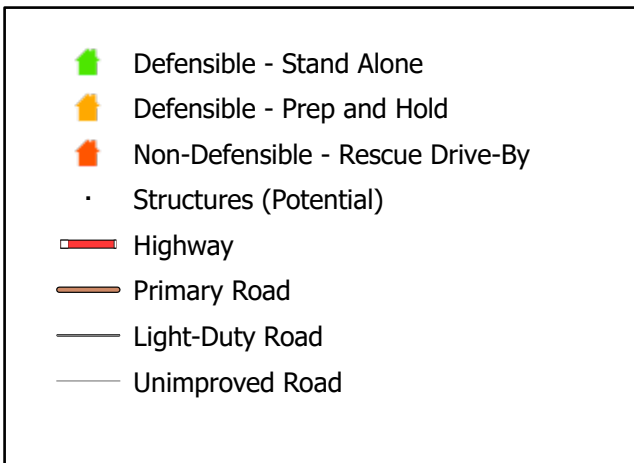
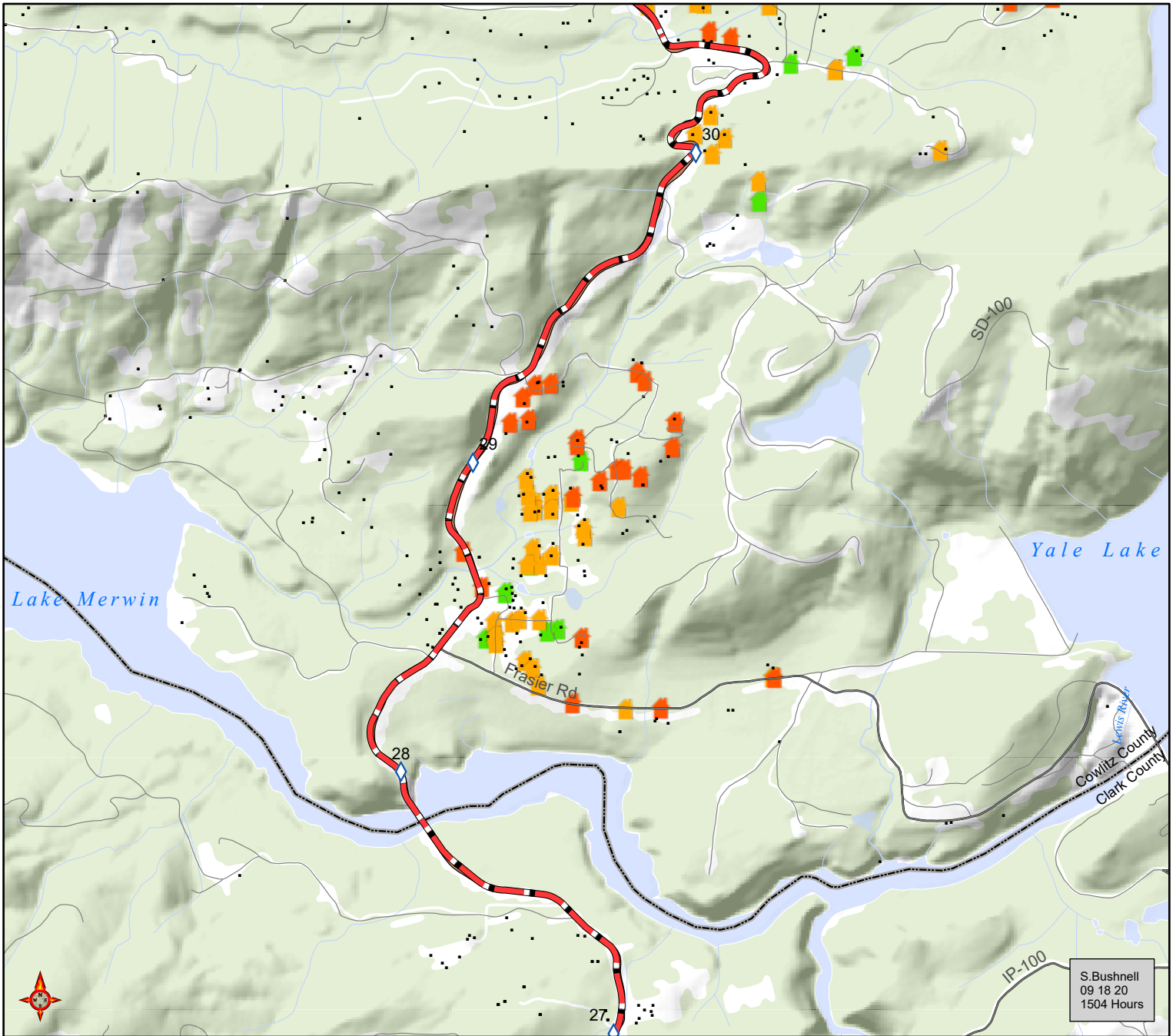


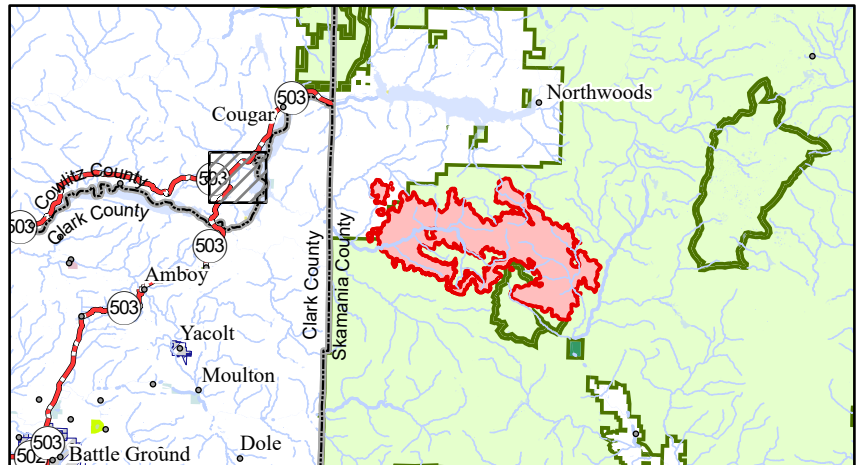
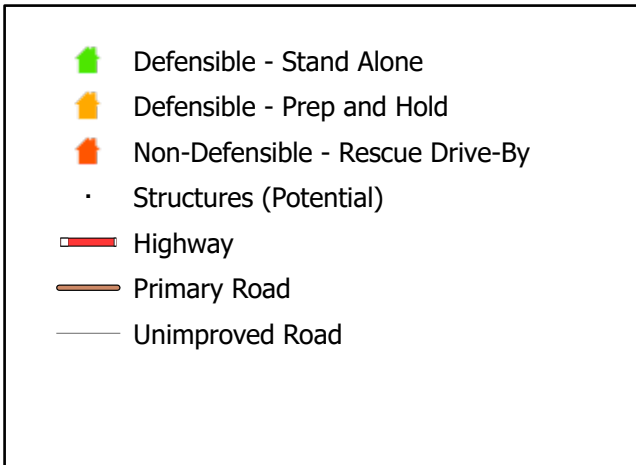
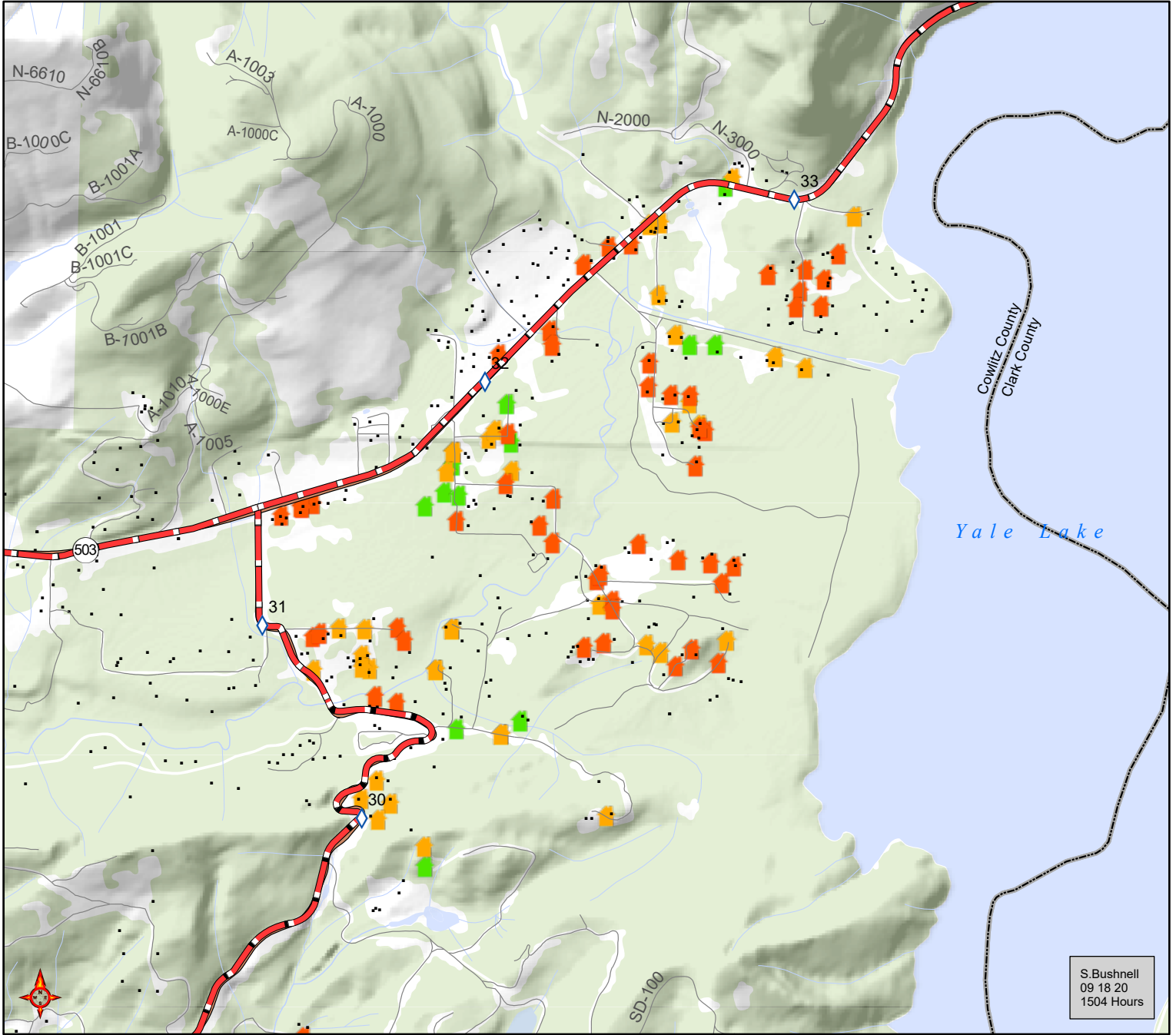
# Structure Triage Assessment Overview



# Structure Triage Assessment Yale Bridge

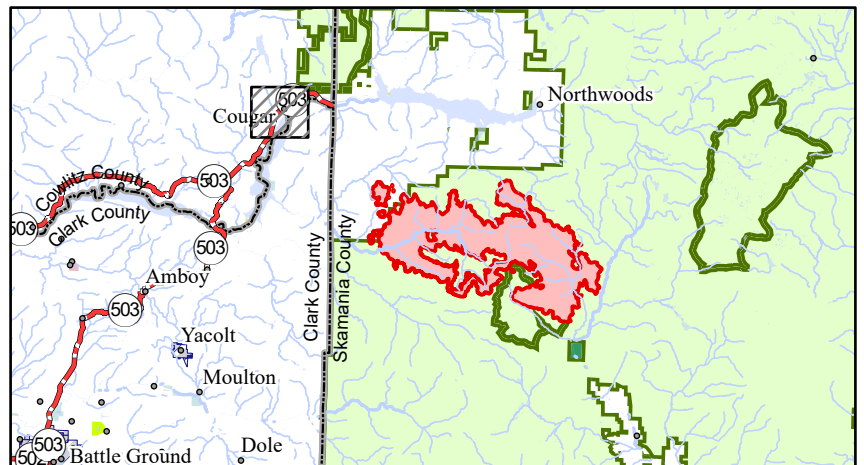
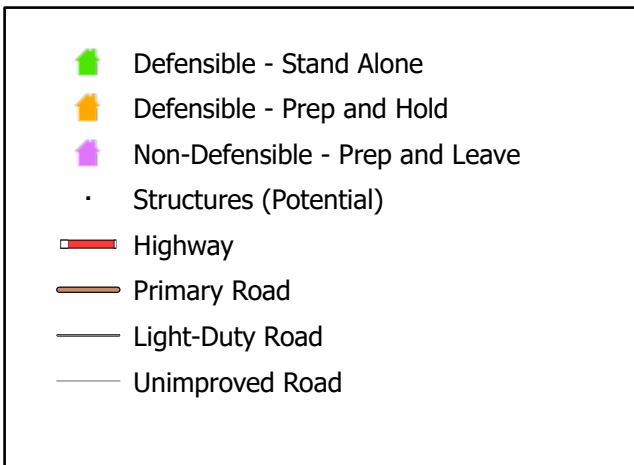
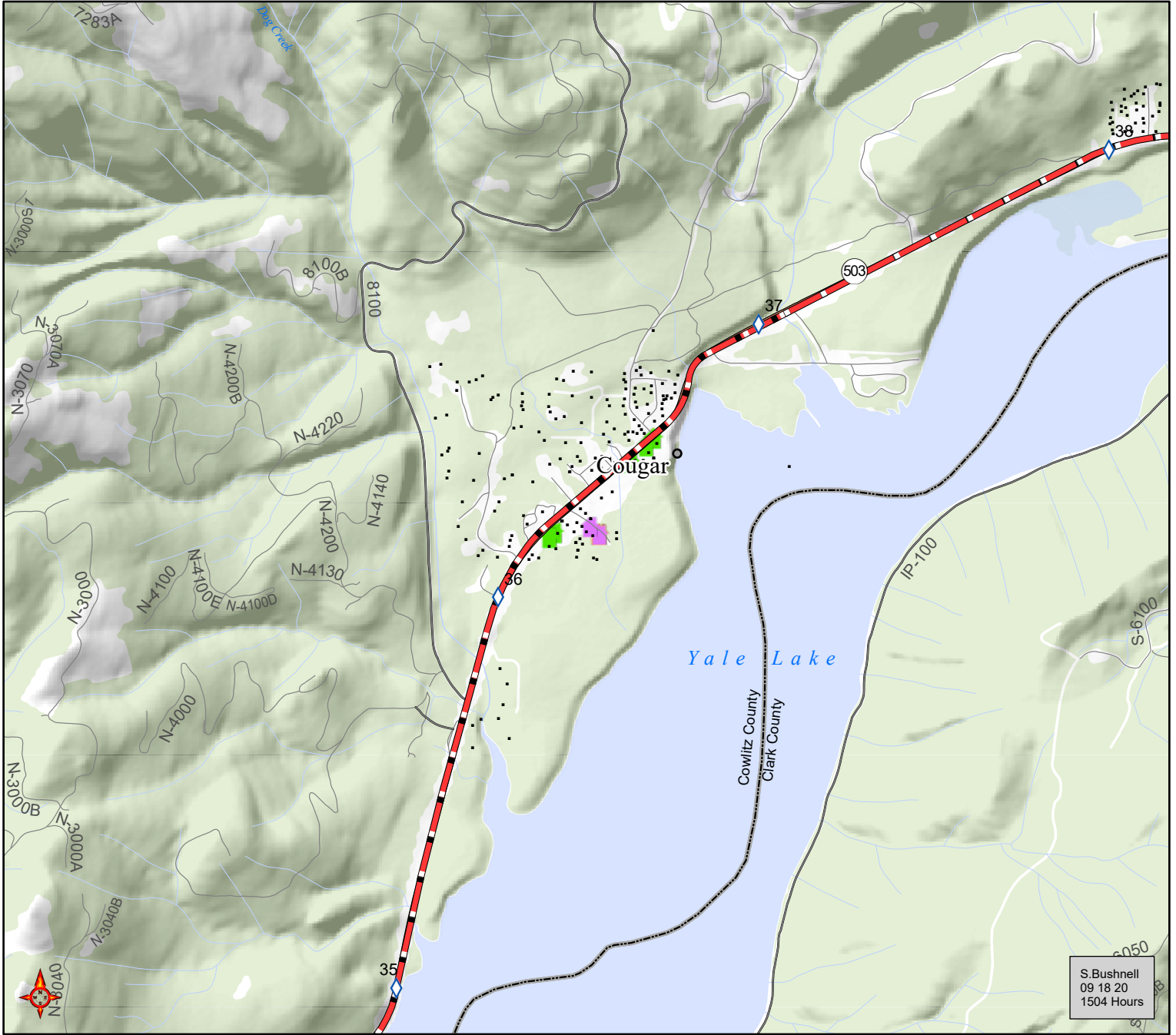


# Structure Triage Assessment Speelyai Creek



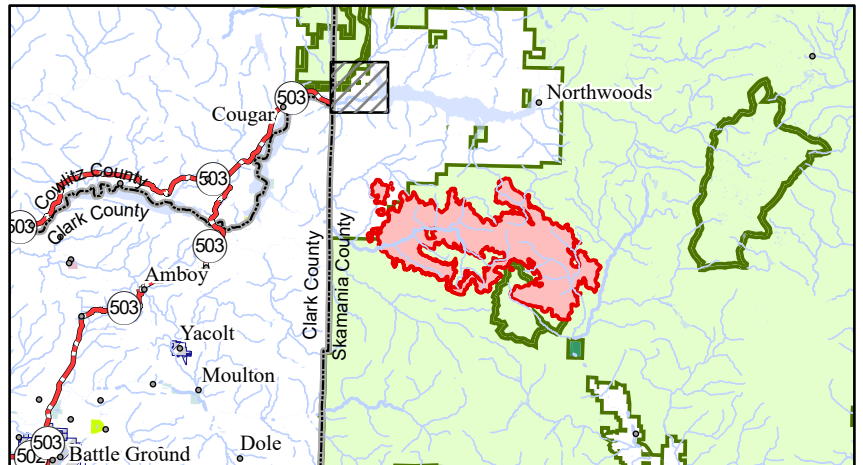
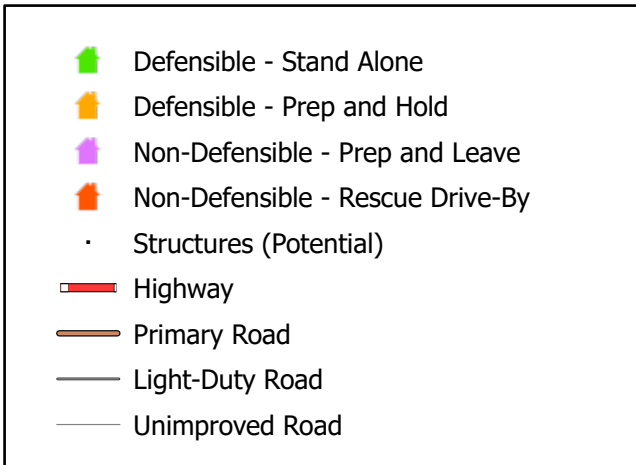


# Structure Triage Assessment Cougar










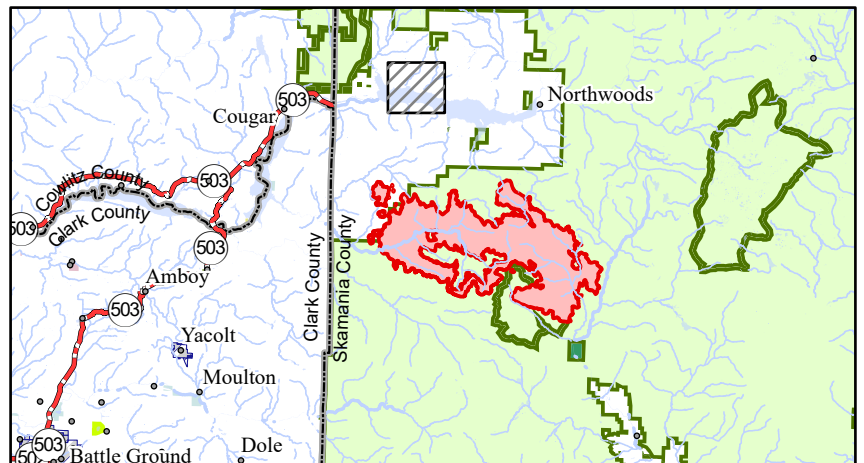
# Structure Triage Assessment Lewis River Levee



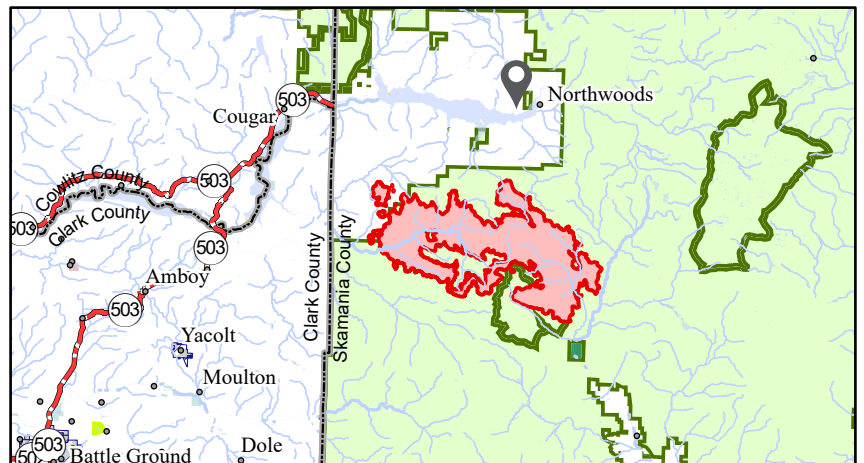
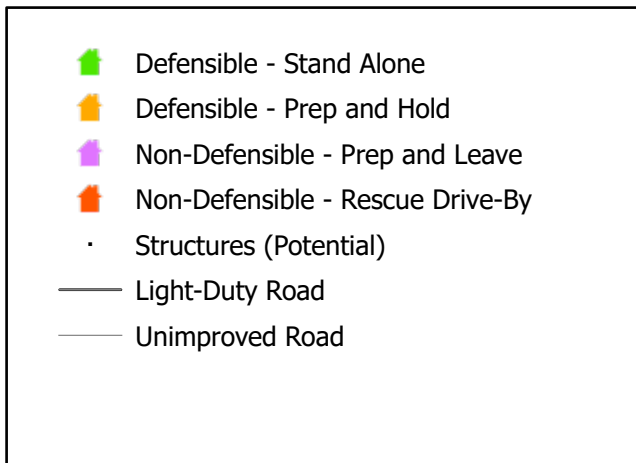
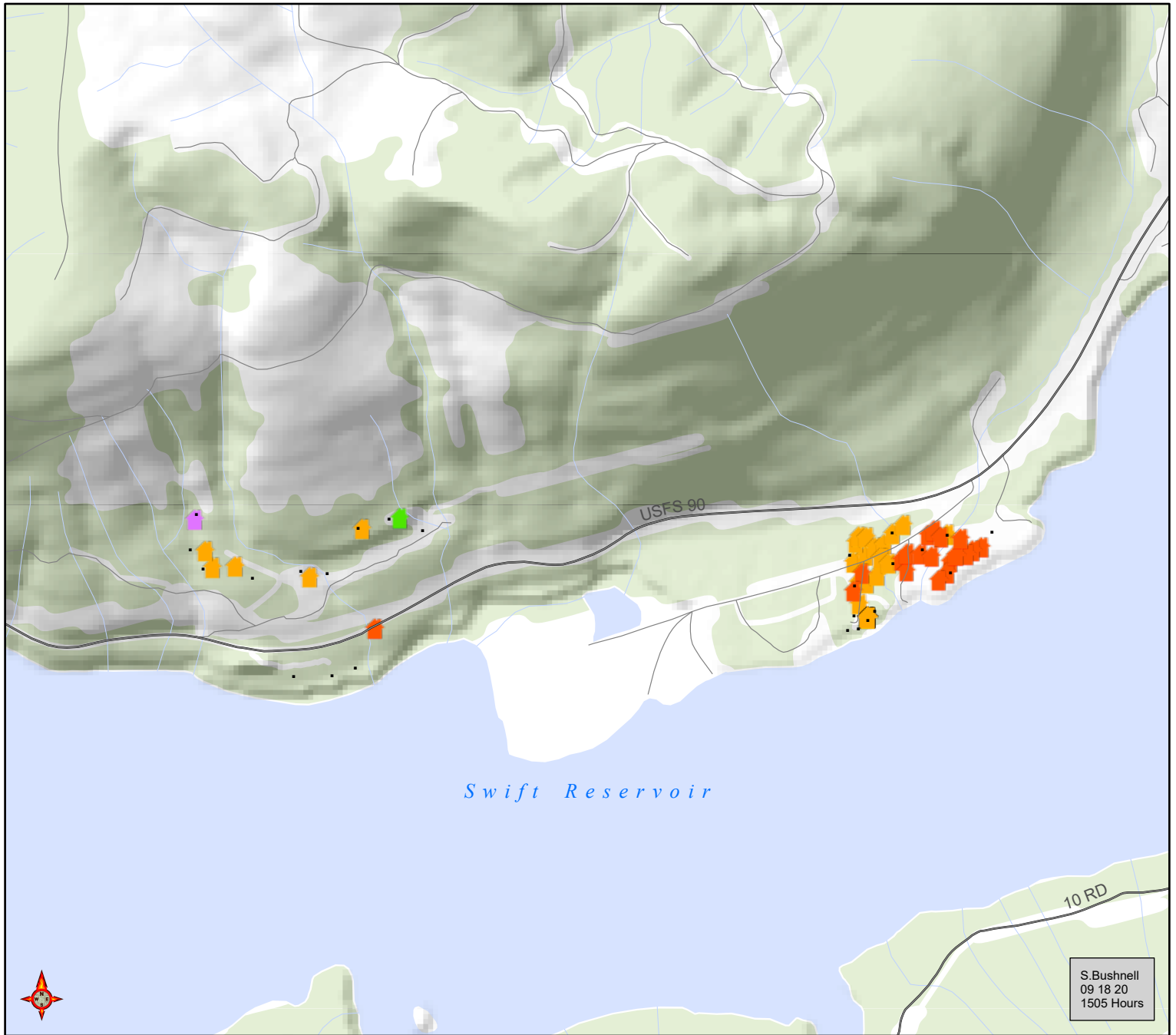
# Structure Triage Assessment Diamon Creek



-  Non-Defensible - Prep and Leave
-  Non-Defensible - Rescue Drive-By
-  Structures (Potential)
-  Light-Duty Road
-  Unimproved Road

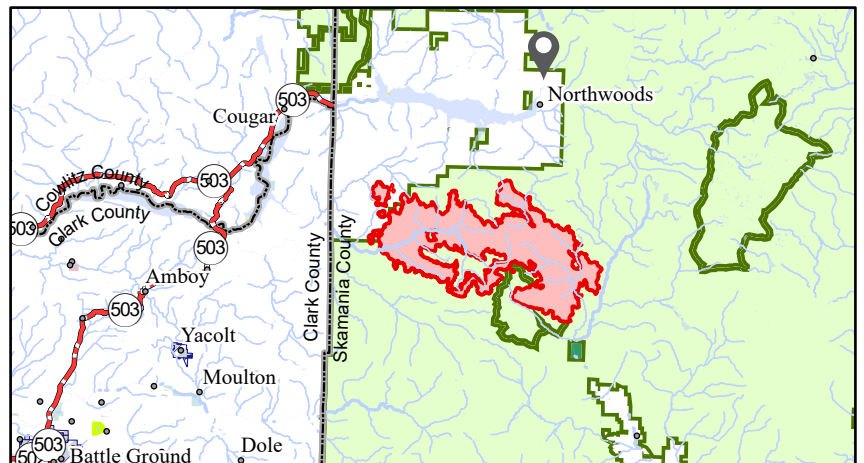
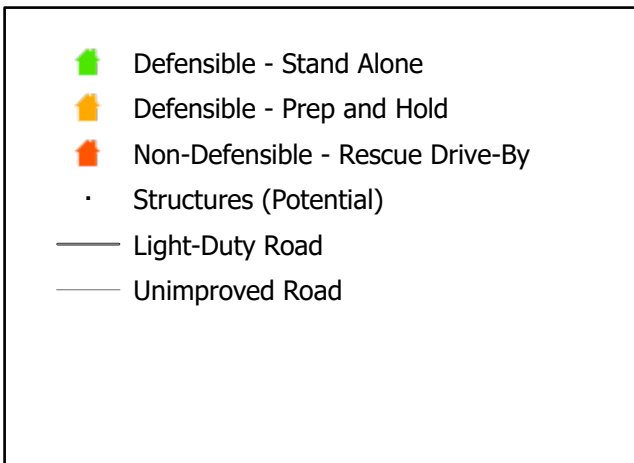
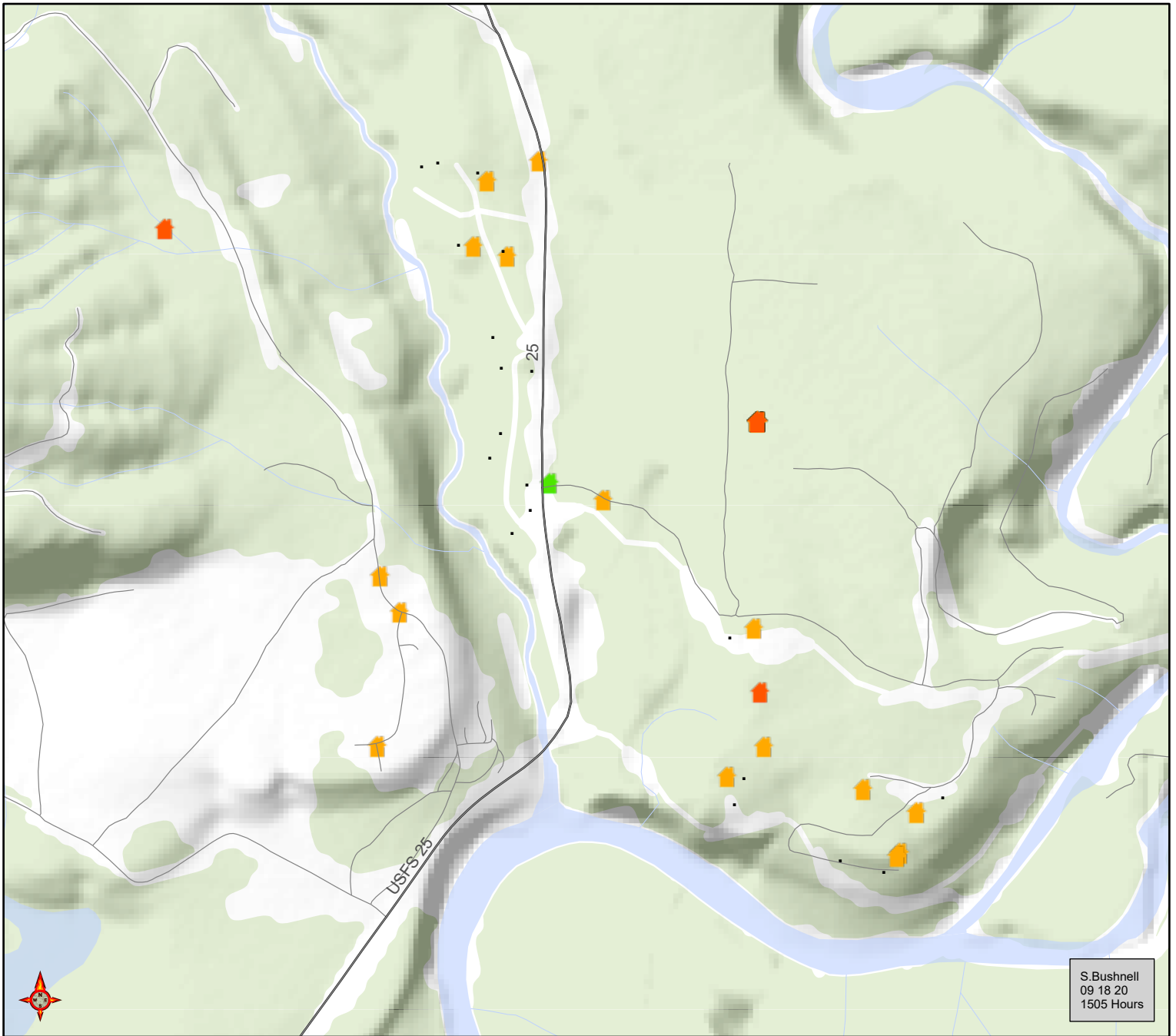


# Structure Triage Assessment Swift Forest Camp

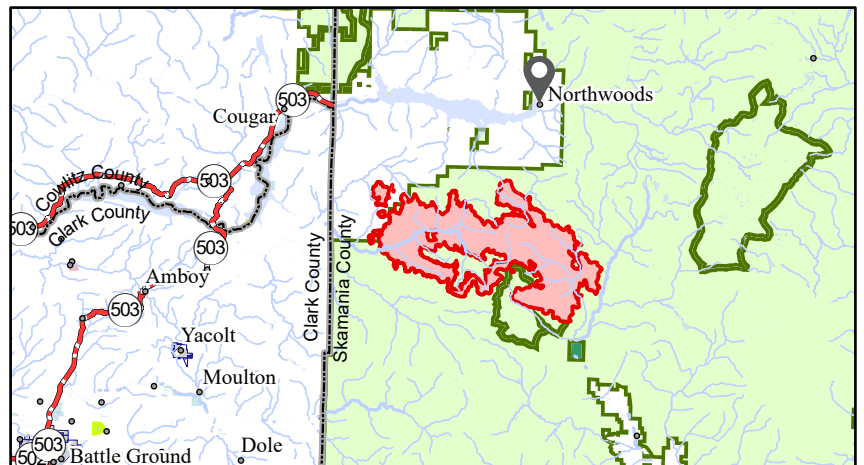
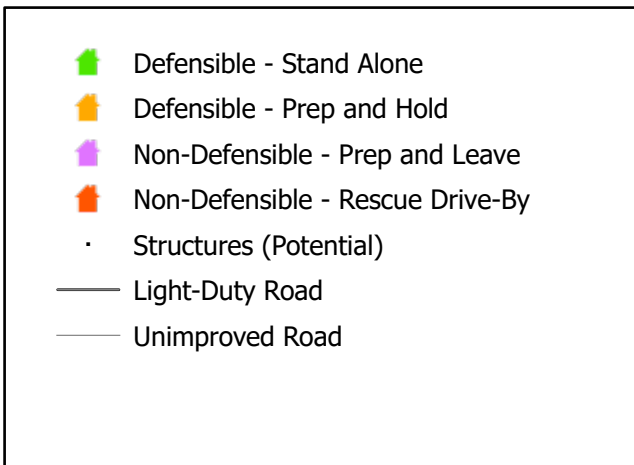
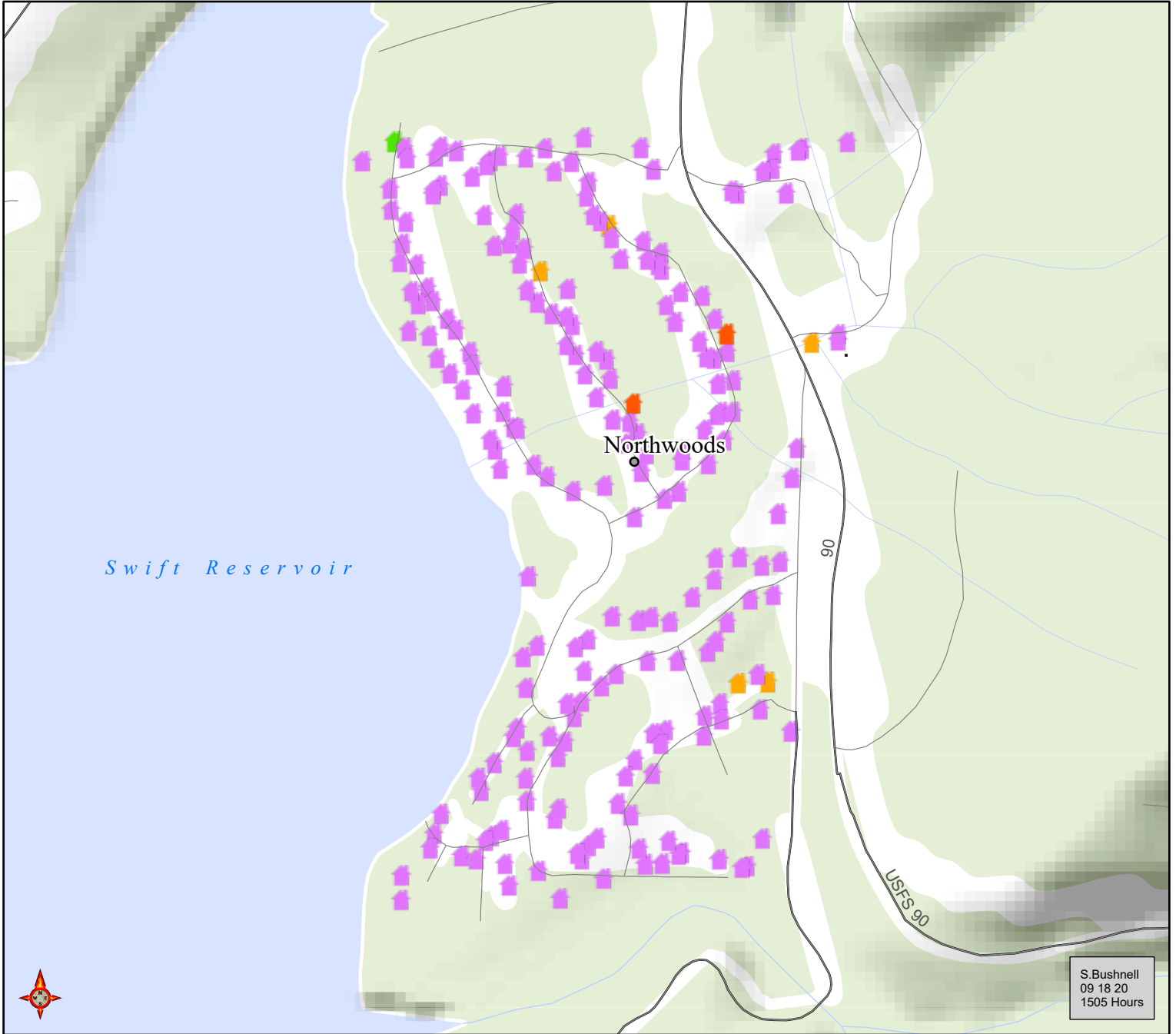




# Structure Triage Assessment Pine Creek



# Structure Triage Assessment Northwoods



# Structure Triage Assessment Mineral Springs

