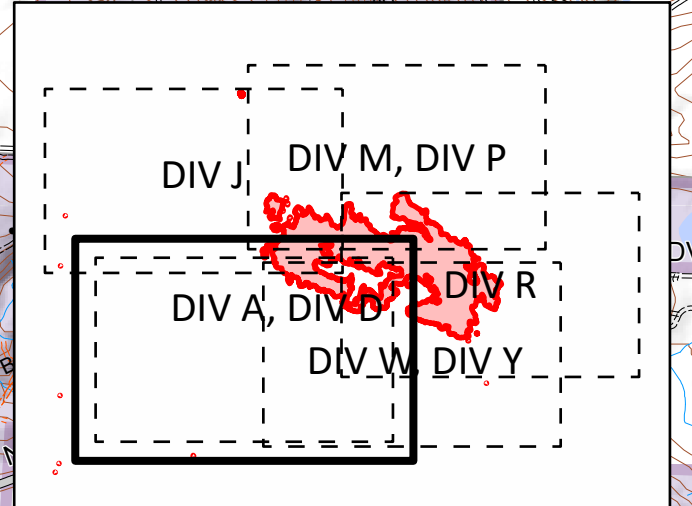
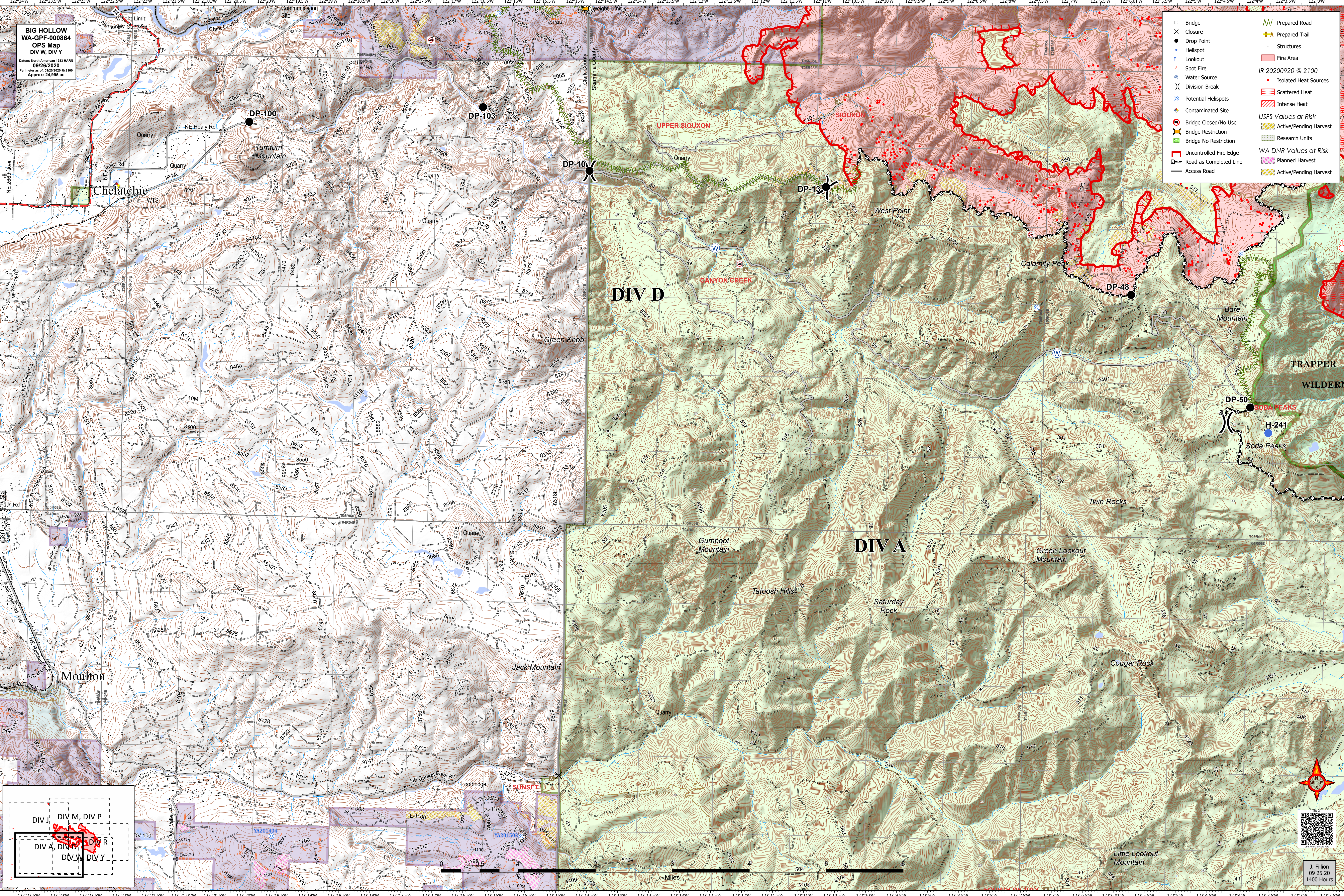
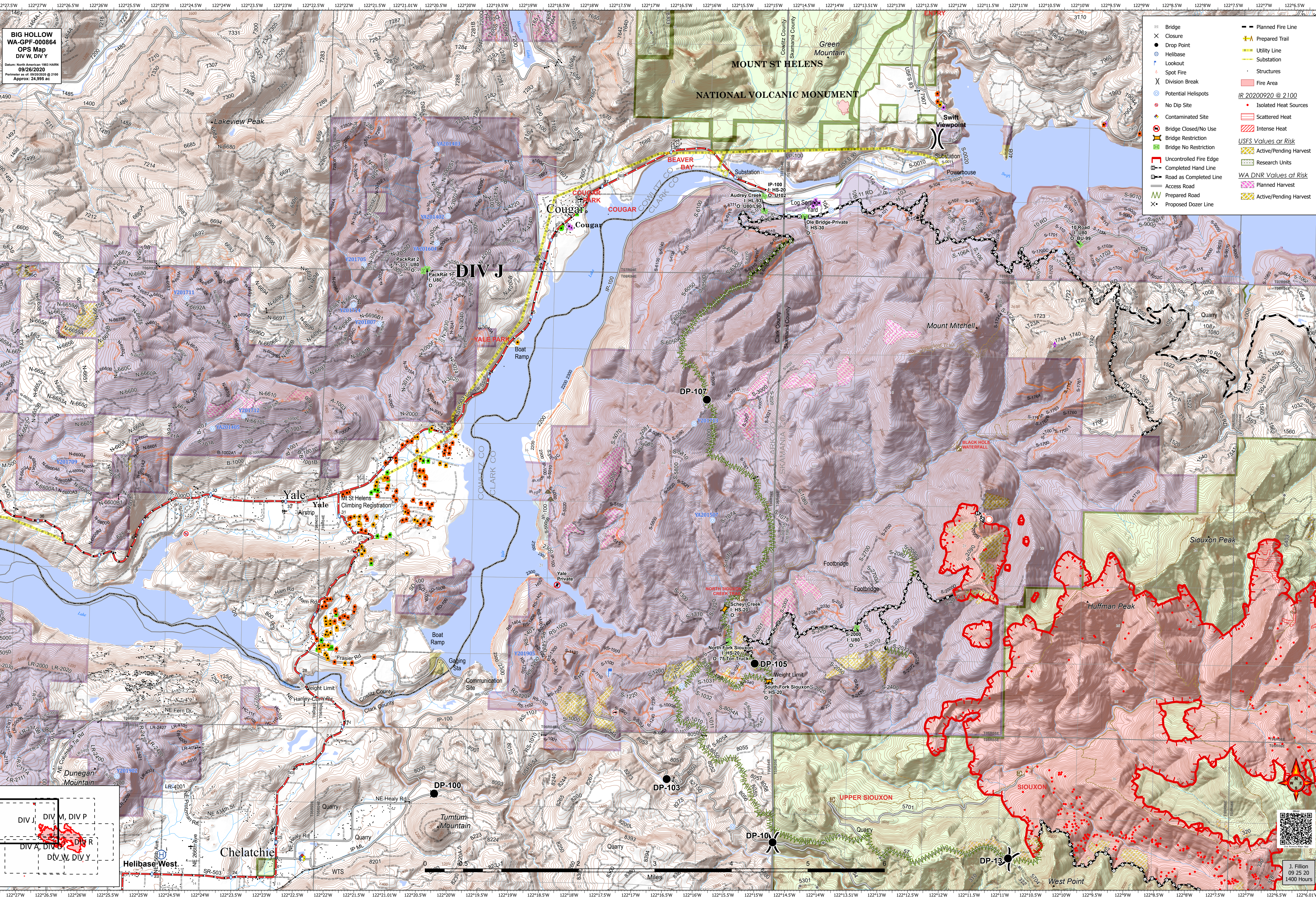


BIG HOLLOW
WA-GPF-000864
OPS Map
DIV W, DIV Y

- Bridge
- Closure
- Drop Point
- Helipoint
- Lookout
- Spot Fire
- Water Source
- Division Break
- Potential Helispots
- Contaminated Site
- Bridge Closed/No Use
- Bridge Restriction
- Bridge No Restriction
- Uncontrolled Fire Edge
- Road as Completed Line
- Prepared Road
- Prepared Trail
- Structures
- Fire Area
- IR 20200920 @ 2100
- Isolated Heat Sources
- Scattered Heat
- Intense Heat
- USFS Values at Risk
- Active/Pending Harvest
- Research Units
- WA DNR Values at Risk
- Planned Harvest
- Active/Pending Harvest



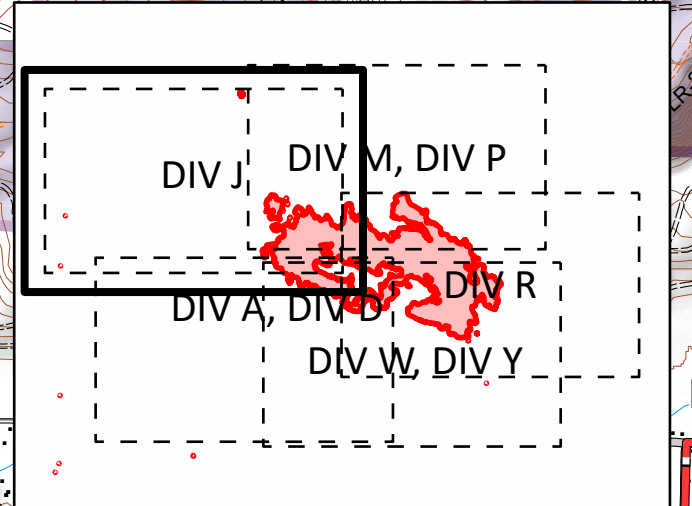
J. Fillion
09 25 20
1400 Hours



BIG HOLLOW
WA-GPF-000864
OPS Map
DIV W, DIV Y

Datum: North American 1983 HARN
09/28/2020
Perimeter as of: 09/20/2020 @ 2100
Approx: 24,995 ac

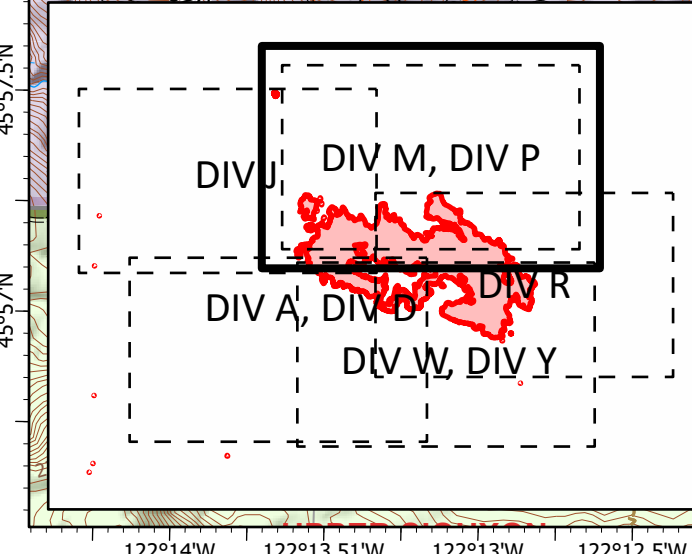
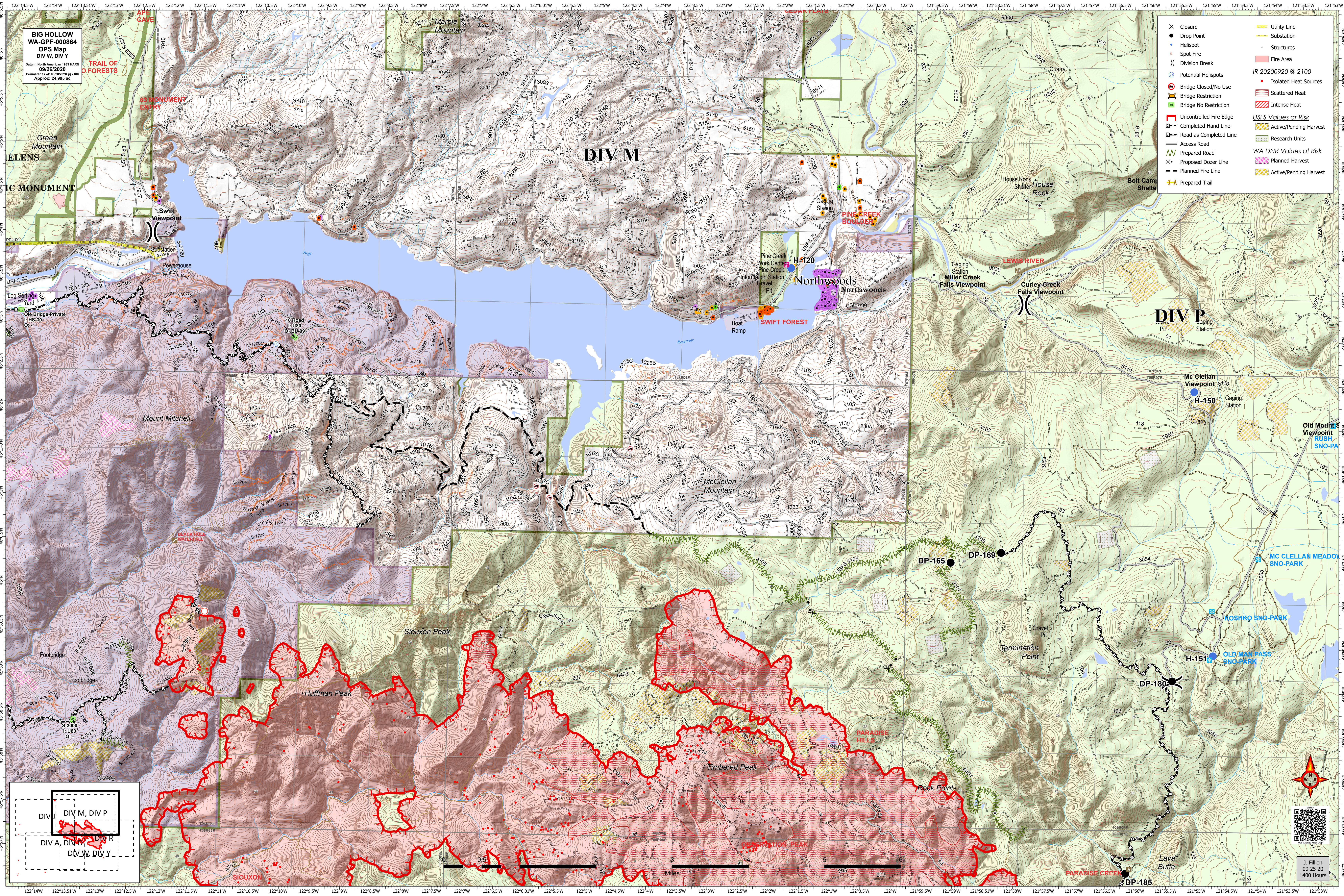
- Bridge
- Closure
- Drop Point
- Helibase
- Lookout
- Spot Fire
- Division Break
- Potential Helispots
- No Dip Site
- Contaminated Site
- Bridge Closed/No Use
- Bridge Restriction
- Bridge No Restriction
- Uncontrolled Fire Edge
- Completed Hand Line
- Road as Completed Line
- Access Road
- Prepared Road
- Proposed Dozer Line
- Planned Fire Line
- Prepared Trail
- Utility Line
- Substation
- Structures
- Fire Area
- IR 20200920 @ 2100
- Isolated Heat Sources
- Scattered Heat
- Intense Heat
- USFS Values at Risk
- Active/Pending Harvest
- Research Units
- WA DNR Values at Risk
- Planned Harvest
- Active/Pending Harvest



J. Fillion
09 25 20
1400 Hours

BIG HOLLOW
WA-GPF-000864
OPS Map
DIV W, DIV Y
Datum: North American 1983 HARN
09/26/2020
Perimeter as of: 09/20/2020 @ 2100
Approx: 24,995 ac

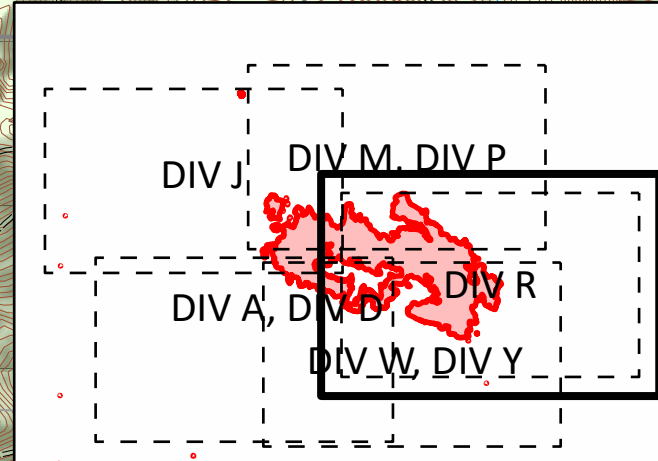
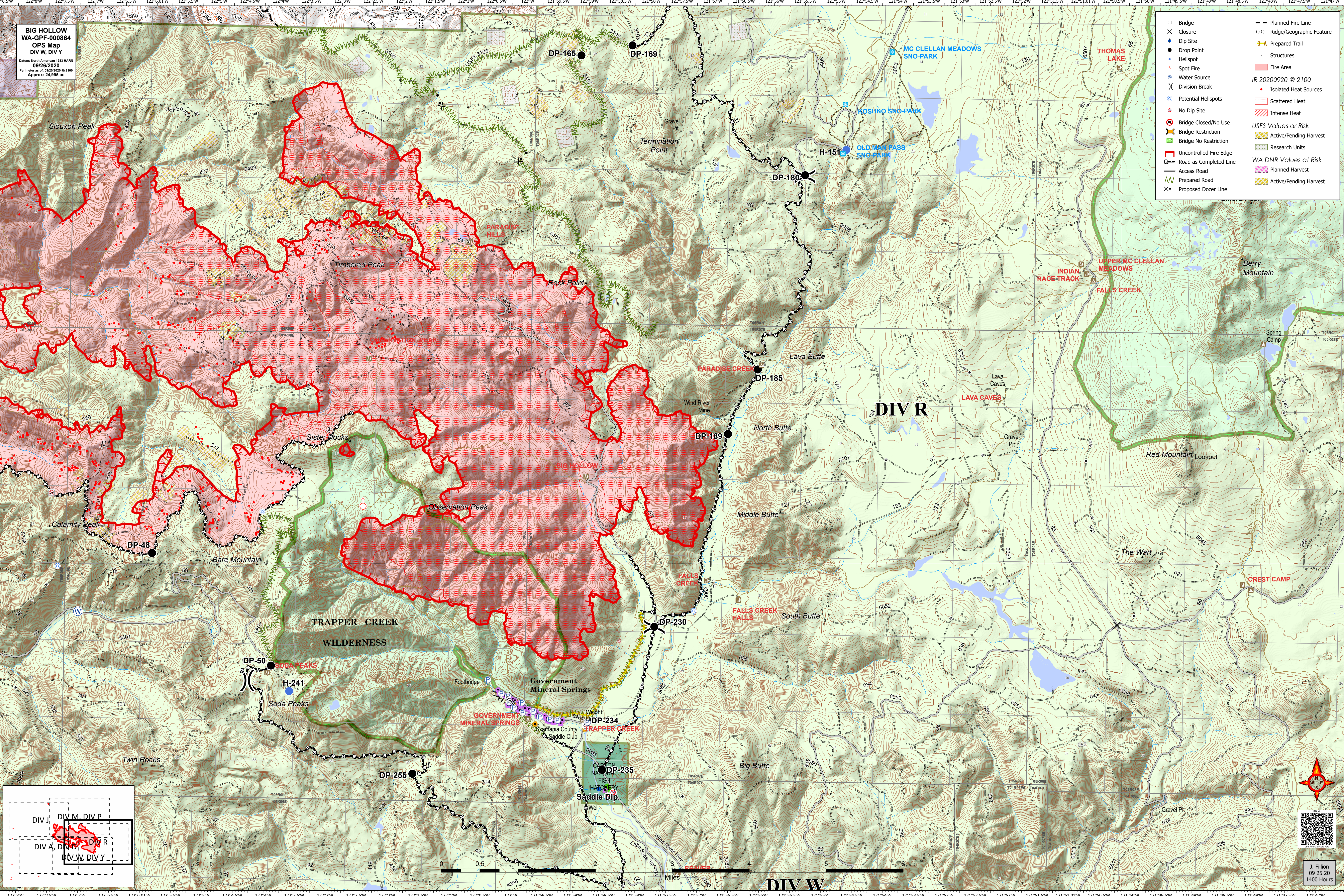
- × Closure
- Drop Point
- Helispot
- Spot Fire
- ⌵ Division Break
- Potential Helispots
- ⊗ Bridge Closed/No Use
- ⊘ Bridge Restriction
- ⊘ Bridge No Restriction
- ⊘ Uncontrolled Fire Edge
- ⊘ Completed Hand Line
- ⊘ Road as Completed Line
- ⊘ Access Road
- ⊘ Prepared Road
- ⊘ Proposed Dozer Line
- ⊘ Planned Fire Line
- ⊘ Prepared Trail
- Utility Line
- Substation
- Structures
- Fire Area
- IR 20200920 @ 2100
- Isolated Heat Sources
- ⊘ Scattered Heat
- ⊘ Intense Heat
- USFS Values at Risk
- ⊘ Active/Pending Harvest
- ⊘ Research Units
- WA DNR Values at Risk
- ⊘ Planned Harvest
- ⊘ Active/Pending Harvest



J. Fillon
09 25 20
1400 Hours

BIG HOLLOW
WA-GPP-000864
OPS Map
DIV W, DIV Y
Datum: North American 1983 HARN
09/26/2020
Perimeter as of: 09/20/2020 @ 2100
Approx: 24,995 ac

- | | |
|------------------------|--------------------------|
| Bridge | Planned Fire Line |
| Closure | Ridge/Geographic Feature |
| Dip Site | Prepared Trail |
| Drop Point | Structures |
| Helispot | Fire Area |
| Spot Fire | IR 20200920 @ 2100 |
| Water Source | Isolated Heat Sources |
| Division Break | Scattered Heat |
| Potential Helispots | Intense Heat |
| No Dip Site | USFS Values at Risk |
| Bridge Closed/No Use | Active/Pending Harvest |
| Bridge Restriction | Research Units |
| Bridge No Restriction | WA DNR Values at Risk |
| Uncontrolled Fire Edge | Planned Harvest |
| Road as Completed Line | Active/Pending Harvest |
| Access Road | |
| Prepared Road | |
| Proposed Dozer Line | |

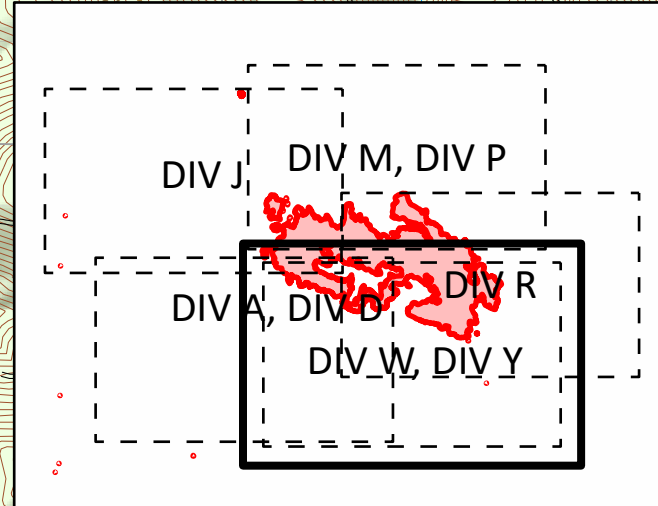
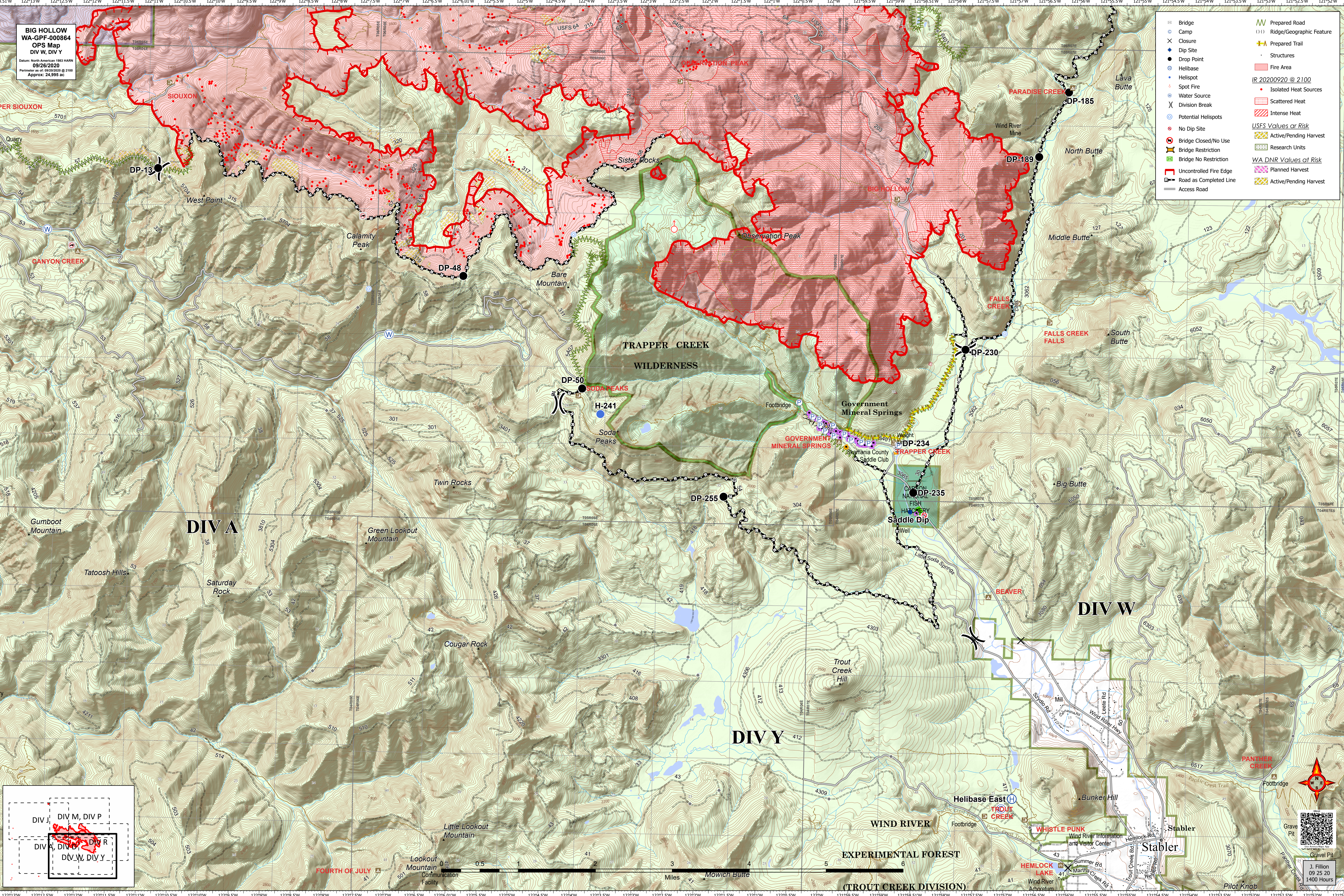


J. Fillion
09 25 20
1400 Hours

BIG HOLLOW
WA-GPF-000864
OPS Map
DIV W, DIV Y

Datum: North American 1983 HARN
09/26/2020
Perimeter as of: 09/20/2020 @ 2100
Approx: 24,995 ac

- Bridge
- Camp
- Closure
- Dip Site
- Drop Point
- Helibase
- Helispot
- Spot Fire
- Water Source
- Division Break
- Potential Helispots
- No Dip Site
- Bridge Closed/No Use
- Bridge Restriction
- Bridge No Restriction
- Uncontrolled Fire Edge
- Access Road
- Prepared Road
- Ridge/Geographic Feature
- Prepared Trail
- Structures
- Fire Area
- IR 20200920 @ 2100
 - Isolated Heat Sources
 - Scattered Heat
 - Intense Heat
- USFS Values or Risk
 - Active/Pending Harvest
 - Research Units
- WADNR Values at Risk
 - Planned Harvest
 - Active/Pending Harvest



A north arrow is located in the bottom right corner, pointing upwards. Below it is a QR code that likely links to additional information or data related to the map.

J. Fillon
09 25 20
1400 Hours