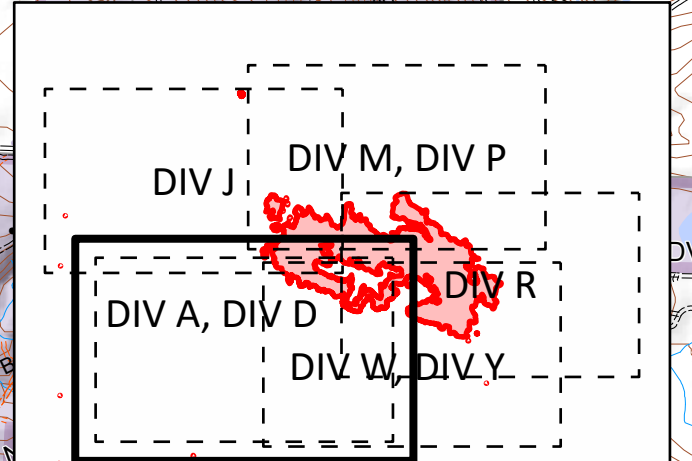


BIG HOLLOW
WA-GPF-000864
OPS Map
DIV A, DIV D

Date: North American 1983 HARN
09/21/2020 Day Shift
Perimeter as of: 09/17/2020 @ 1609
Approx: 24,788 ac

- | | |
|--------------------------|------------------------|
| Bridge | Road as Completed Line |
| X Closure | Access Road |
| ● Drop Point | Prepared Road |
| ● Helispot | Prepared Trail |
| ● Lookout | Structures |
| ● Spot Fire | Fire Area |
| ● Water Source | USFS Values at Risk |
| ⊗ Division Break | Active/Pending Harvest |
| ○ Potential Helispots | Research Units |
| ◆ Contaminated Site | WA DNR Values at Risk |
| ⊗ Bridge Closed/No Use | Planned Harvest |
| ⊗ Bridge Restriction | Active/Pending Harvest |
| ⊗ Bridge No Restriction | |
| ⊗ Uncontrolled Fire Edge | |



S. Bushnell
09 20 20
1950 Hours