

120°43'30"W 120°43'0"W 120°42'30"W 120°42'0"W 120°41'30"W 120°41'0"W 120°40'30"W 120°40'0"W



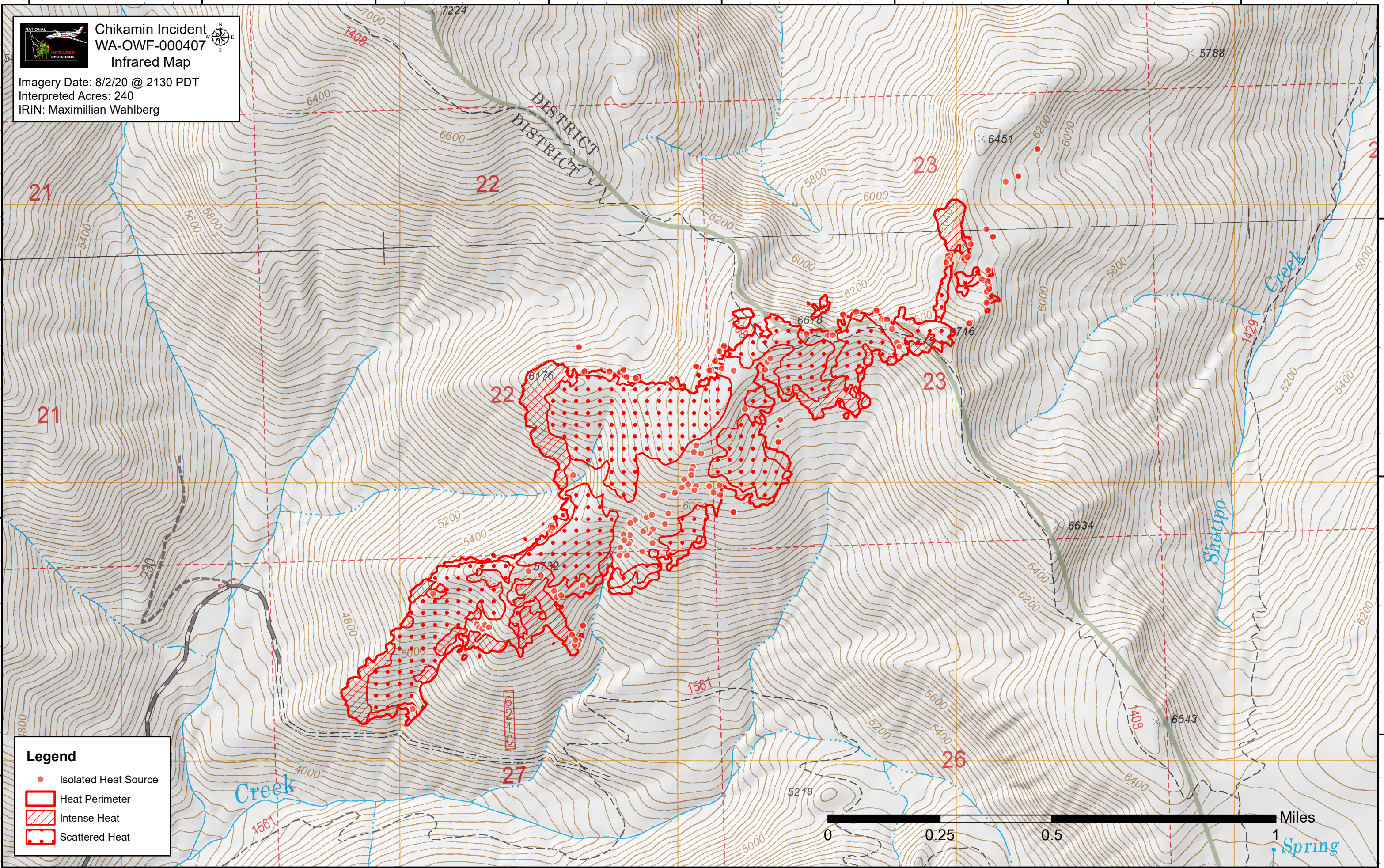
Chikamin Incident WA-OWF-000407 Infrared Map



Imagery Date: 8/2/20 @ 2130 PDT
Interpreted Acres: 240
IRIN: Maximillian Wahlberg

48°0'0"N
47°59'30"N
47°59'0"N

48°0'0"N
47°59'30"N
47°59'0"N



Legend

- Isolated Heat Source
- Heat Perimeter
- Intense Heat
- Scattered Heat



120°43'30"W 120°43'0"W 120°42'30"W 120°42'0"W 120°41'30"W 120°41'0"W 120°40'30"W 120°40'0"W