

120°43'W 120°42'W 120°41'W 120°40'W

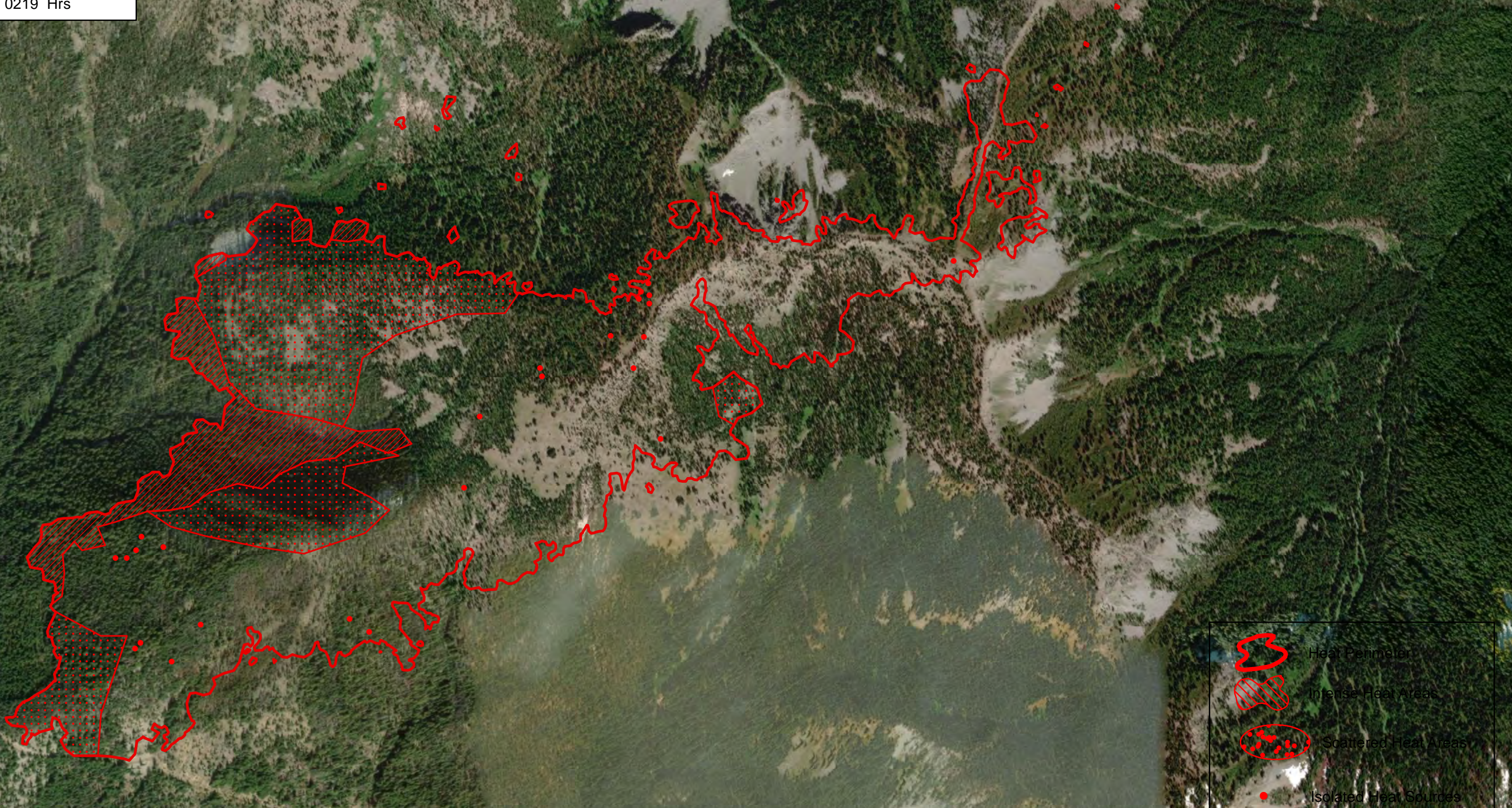
Chikamin Fire
WA-OWF-000407
Heat Acres: 383
Infrared Interpretation
Imagery Date:
2020/08/10 0219 Hrs



48°0'N

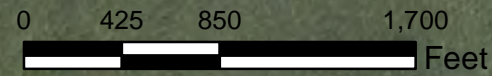
48°0'N

47°59'N



-  Heat Perimeter
-  Intense Heat Areas
-  Scattered Heat Areas
-  Isolated Heat Sources

NAD 1983 UTM Zone 11N



IRIN: Kyle Felker
Map produced:
8/10/2020 0331 hrs

Source: Esri, DigitalGlobe, GeoEye, Earthstar Geographics, CNES/Airbus DS, USDA, USGS, AeroGRID, IGN, and the GIS User Community

120°43'W 120°42'W 120°41'W 120°40'W