

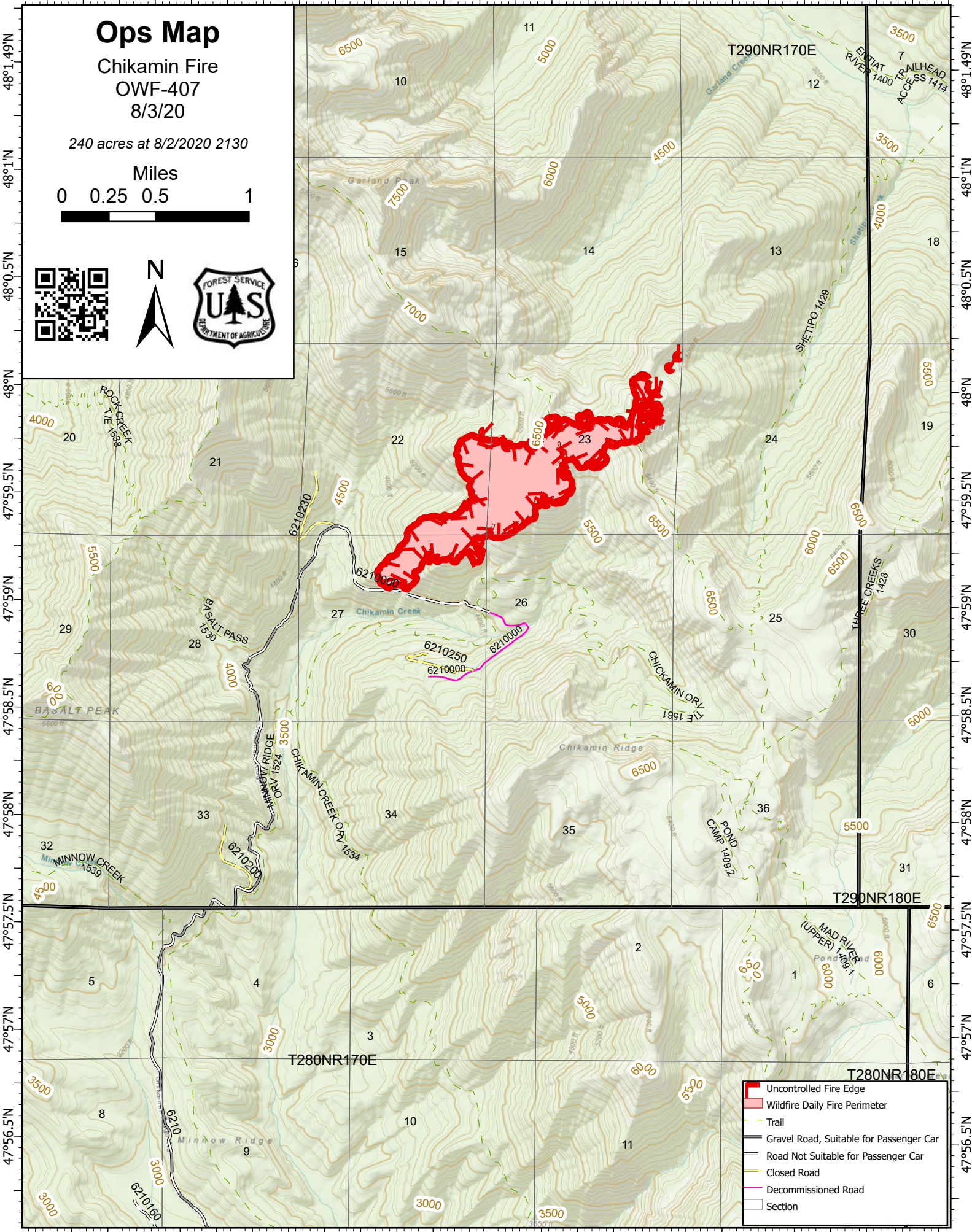
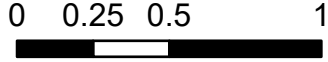
120°45'W 120°44.5'W 120°44'W 120°43.51'W 120°43'W 120°42.5'W 120°42'W 120°41.5'W 120°41'W 120°40.5'W 120°40'W 120°39.5'W 120°39'W

# Ops Map

Chikamin Fire  
OWF-407  
8/3/20

240 acres at 8/2/2020 2130

Miles



- Uncontrolled Fire Edge
- Wildfire Daily Fire Perimeter
- Trail
- Gravel Road, Suitable for Passenger Car
- Road Not Suitable for Passenger Car
- Closed Road
- Decommissioned Road
- Section

120°45'W 120°44.5'W 120°44'W 120°43.51'W 120°43'W 120°42.5'W 120°42'W 120°41.5'W 120°41'W 120°40.5'W 120°40'W 120°39.5'W 120°39'W