

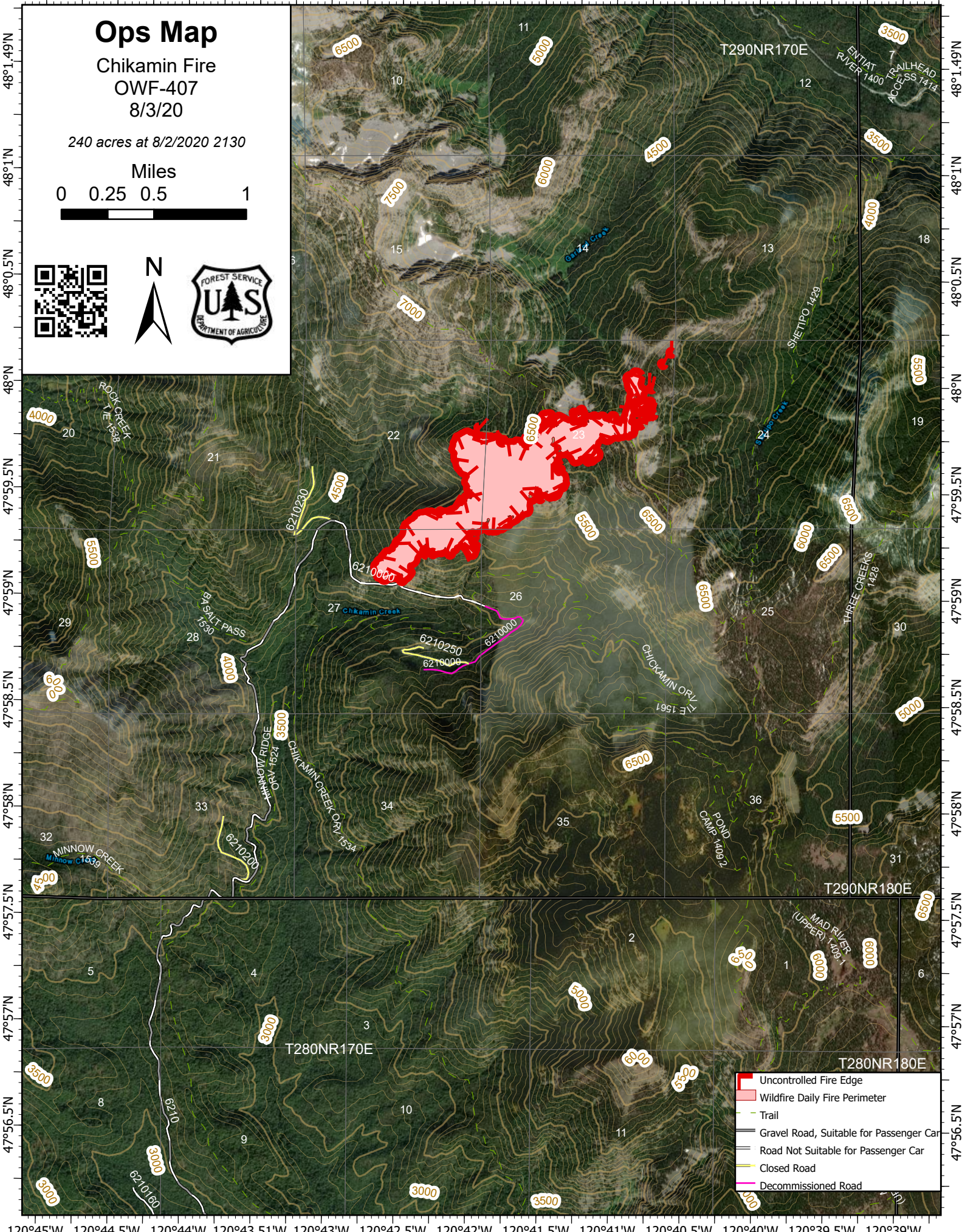
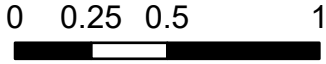
120°45'W 120°44.5'W 120°44'W 120°43.51'W 120°43'W 120°42.5'W 120°42'W 120°41.5'W 120°41'W 120°40.5'W 120°40'W 120°39.5'W 120°39'W

Ops Map

Chikamin Fire
OWF-407
8/3/20

240 acres at 8/2/2020 2130

Miles



	Uncontrolled Fire Edge
	Wildfire Daily Fire Perimeter
	Trail
	Gravel Road, Suitable for Passenger Car
	Road Not Suitable for Passenger Car
	Closed Road
	Decommissioned Road

120°45'W 120°44.5'W 120°44'W 120°43.51'W 120°43'W 120°42.5'W 120°42'W 120°41.5'W 120°41'W 120°40.5'W 120°40'W 120°39.5'W 120°39'W