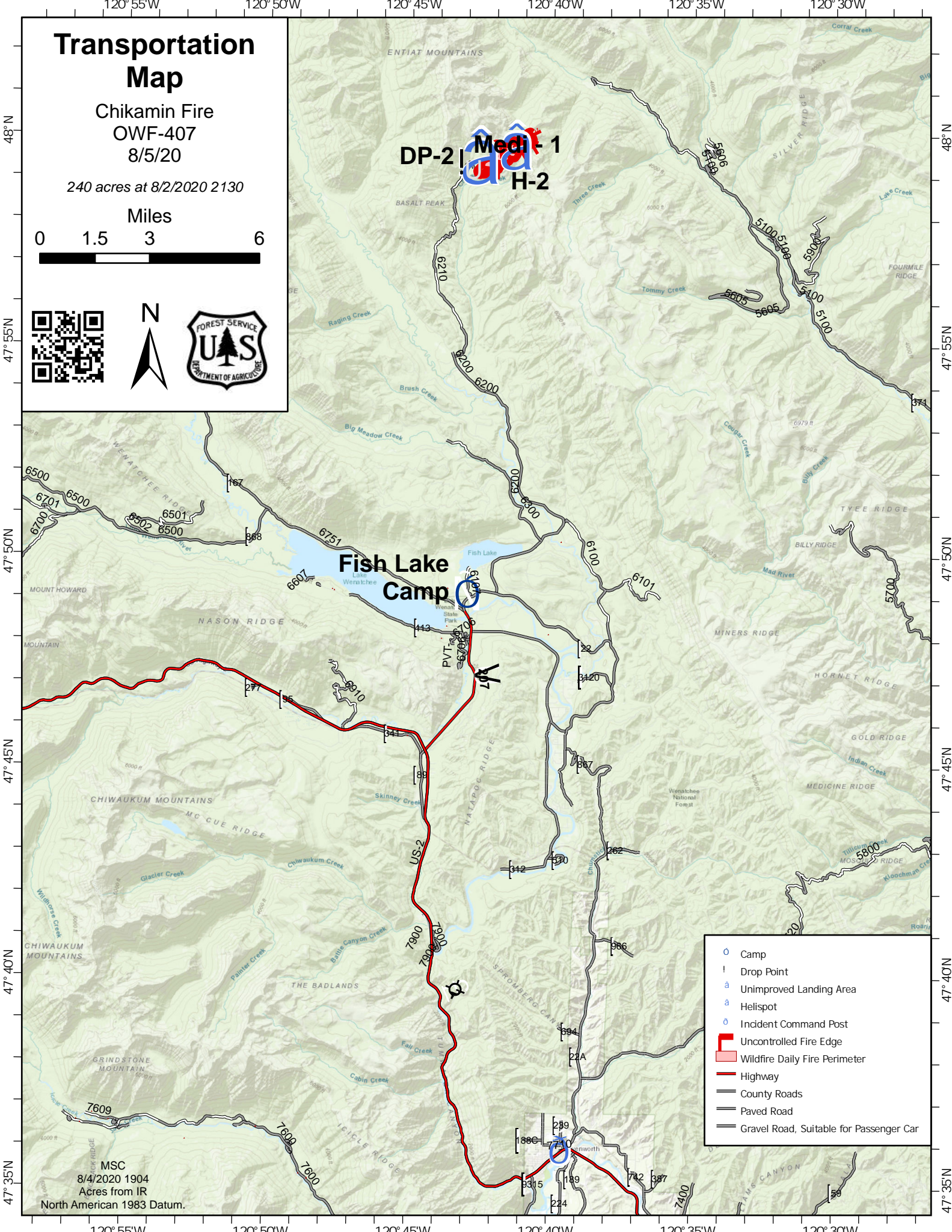
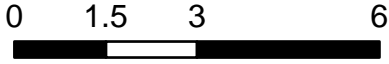


Transportation Map

Chikamin Fire
OWF-407
8/5/20

240 acres at 8/2/2020 2130

Miles



DP-2 | **Medic 1**
H-2

Fish Lake Camp

- Camp
- ! Drop Point
- ⓐ Unimproved Landing Area
- ⓐ Helispot
- ⓐ Incident Command Post
- ▬ Uncontrolled Fire Edge
- ▬ Wildfire Daily Fire Perimeter
- ▬ Highway
- ▬ County Roads
- ▬ Paved Road
- ▬ Gravel Road, Suitable for Passenger Car

MSC
8/4/2020 1904
Acres from IR
North American 1983 Datum.