

120°44'W 120°43'W 120°42'W 120°41'W 120°40'W




48°1'N  
48°0'N  
47°59'N  
47°58'N  
47°57'N

48°1'N  
48°0'N  
47°59'N  
47°58'N  
47°57'N

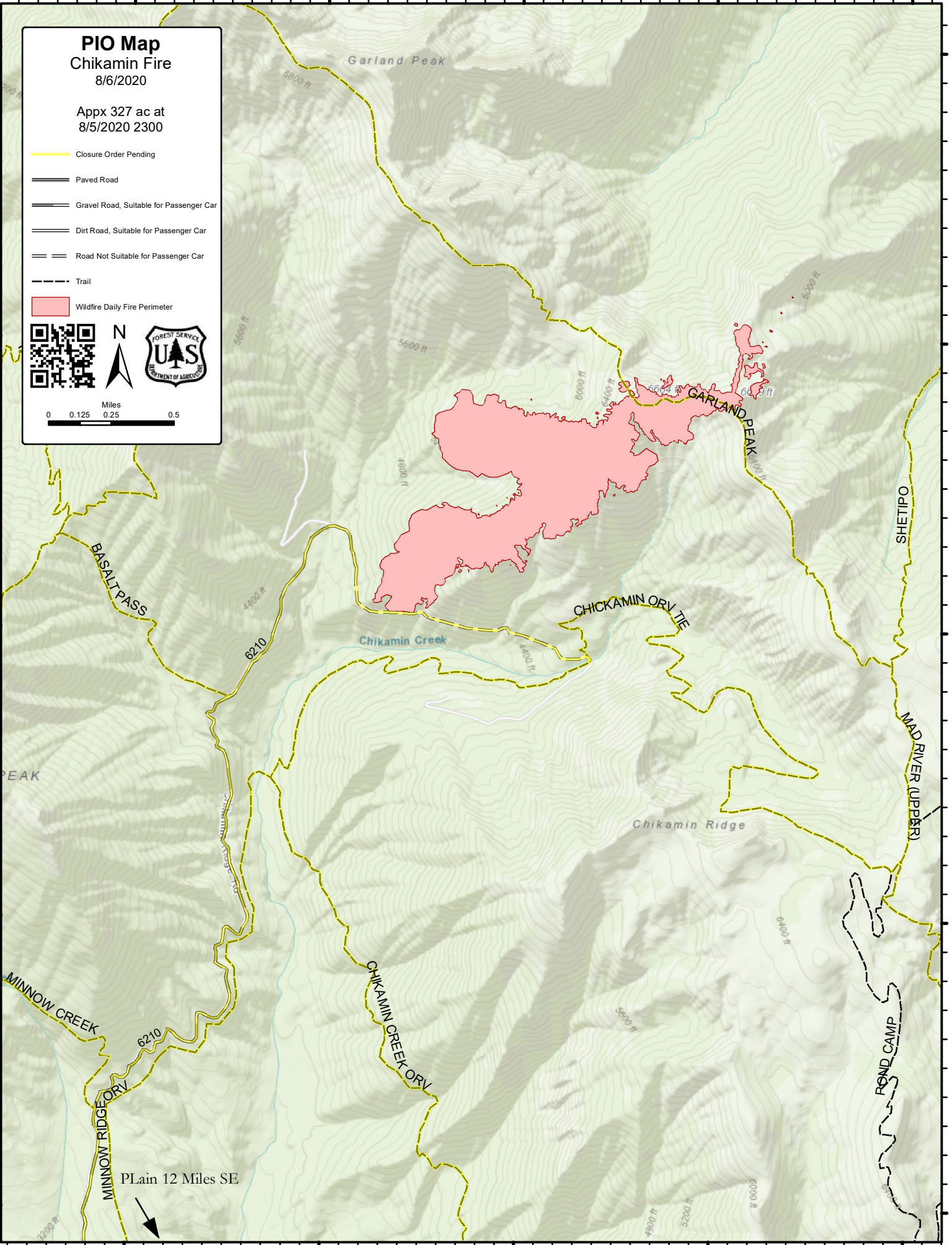
**PIO Map**  
Chikamin Fire  
8/6/2020

Appx 327 ac at  
8/5/2020 2300

- Closure Order Pending
- Paved Road
- Gravel Road, Suitable for Passenger Car
- Dirt Road, Suitable for Passenger Car
- Road Not Suitable for Passenger Car
- Trail
- Wildfire Daily Fire Perimeter

Miles  
0 0.125 0.25 0.5



120°44'W 120°43'W 120°42'W 120°41'W 120°40'W