




Ops Map

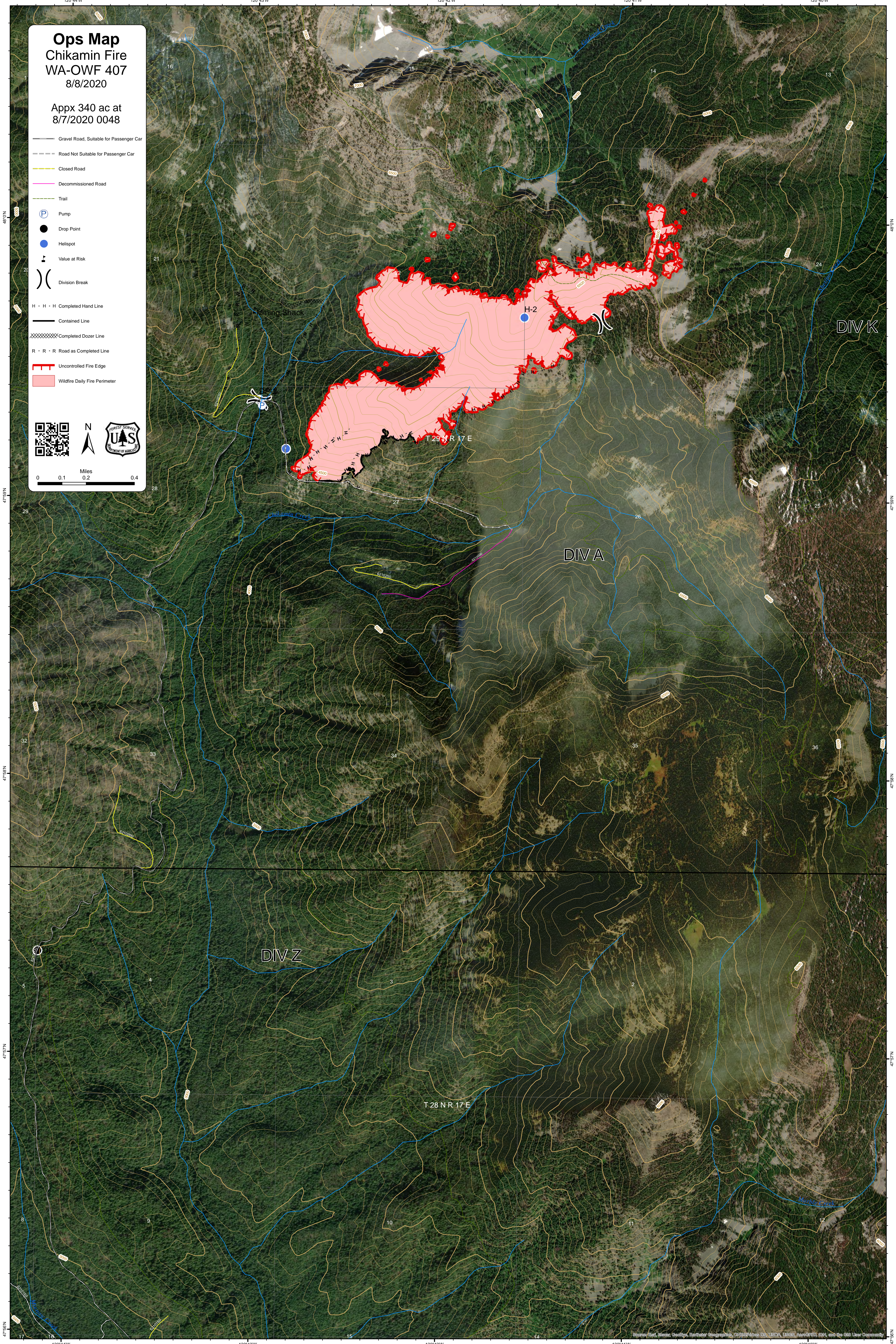
Chikamin Fire
WA-OWF 407
8/8/2020

Appx 340 ac at
8/7/2020 0048

- Gravel Road, Suitable for Passenger Car
- Road Not Suitable for Passenger Car
- Closed Road
- Decommissioned Road
- Trail
- Pump
- Drop Point
- Helispot
- Value at Risk
- Division Break
- H - H - H Completed Hand Line
- Contained Line
- Completed Dozer Line
- R - R - R Road as Completed Line
- Uncontrolled Fire Edge
- Wildfire Daily Fire Perimeter



0 0.1 0.2 0.4 Miles



DIV K

DIV A

DIV Z

T 28 N R 17 E

T 29 N R 17 E