

IAP Map

Chikamin Fire

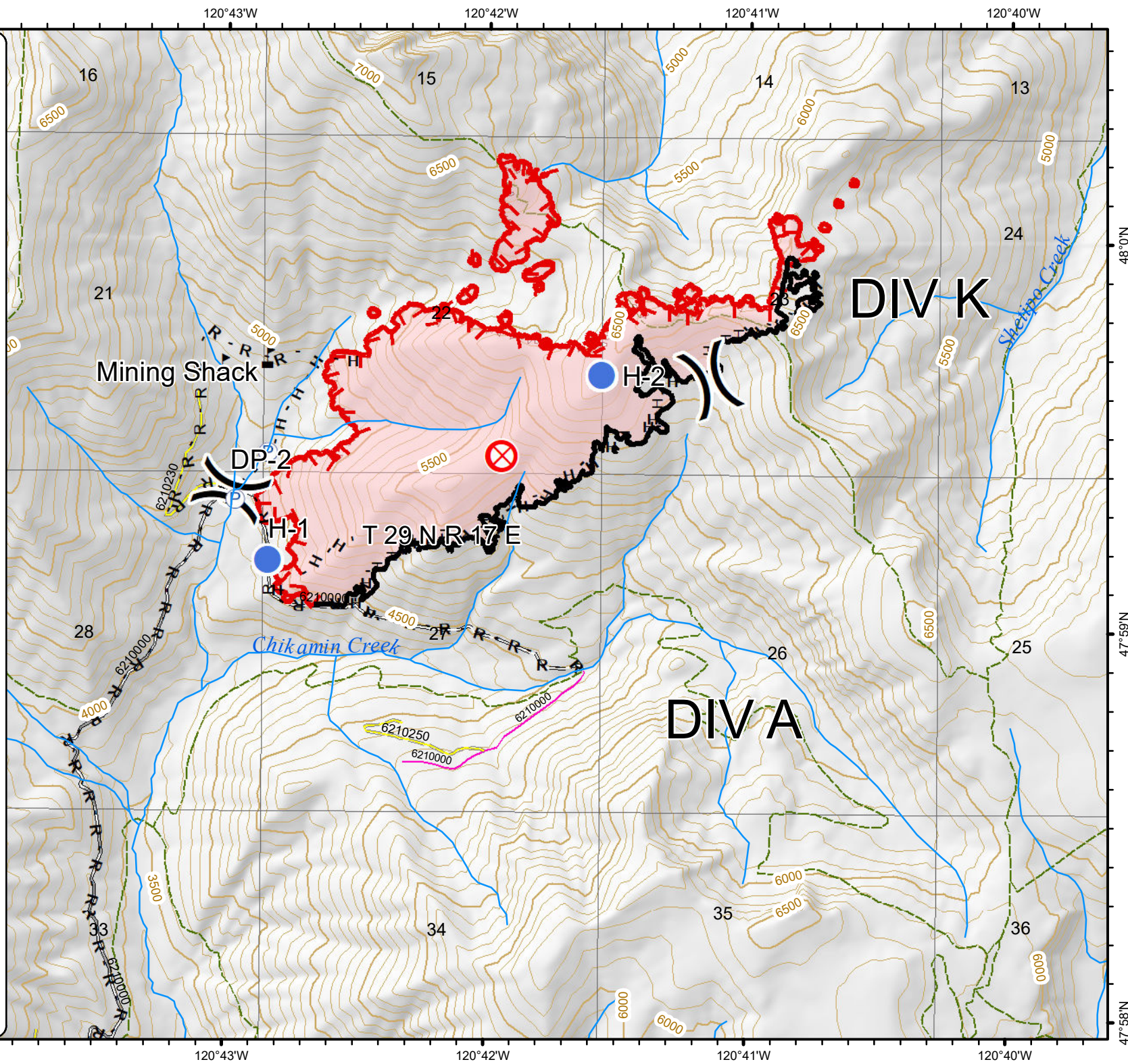
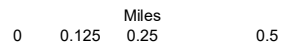
WA-OWF 407

8/15/2020

Appx 430 ac at
8/14/2020 0120

- Pump
- Drop Point
- Helispot
- Value at Risk
- Division Break
- H - H** Completed Hand Line
- Contained Line
- R - R** Road as Completed Line
- Uncontrolled Fire Edge
- Wildfire Daily Fire Perimeter
- Gravel Road, Suitable for Passenger Car
- Road Not Suitable for Passenger Car
- Closed Road
- Decommissioned Road
- Trail

DIV A/K



IAP Map

Chikamin Fire

WA-OWF 407

8/15/2020

Appx 430 ac at
8/14/2020 0120

- Drop Point
- R - R Road as Completed Line
- Gravel Road, Suitable for Passenger Car
- Road Not Suitable for Passenger Car
- Closed Road
- Decommissioned Road
- - - Trail

DIV Z



0 0.125 0.25 0.5
Miles

120°45'W

120°44'W

120°43'W

120°42'W

120°41'W

120°45'W

120°44'W

120°43'W

120°42'W

120°41'W

47°58'N

47°57'N

47°58'N

47°57'N

DIV A

26

T 29 N R 17 E

34

35

DIV Z

2

T 28 N R 17 E

3

4

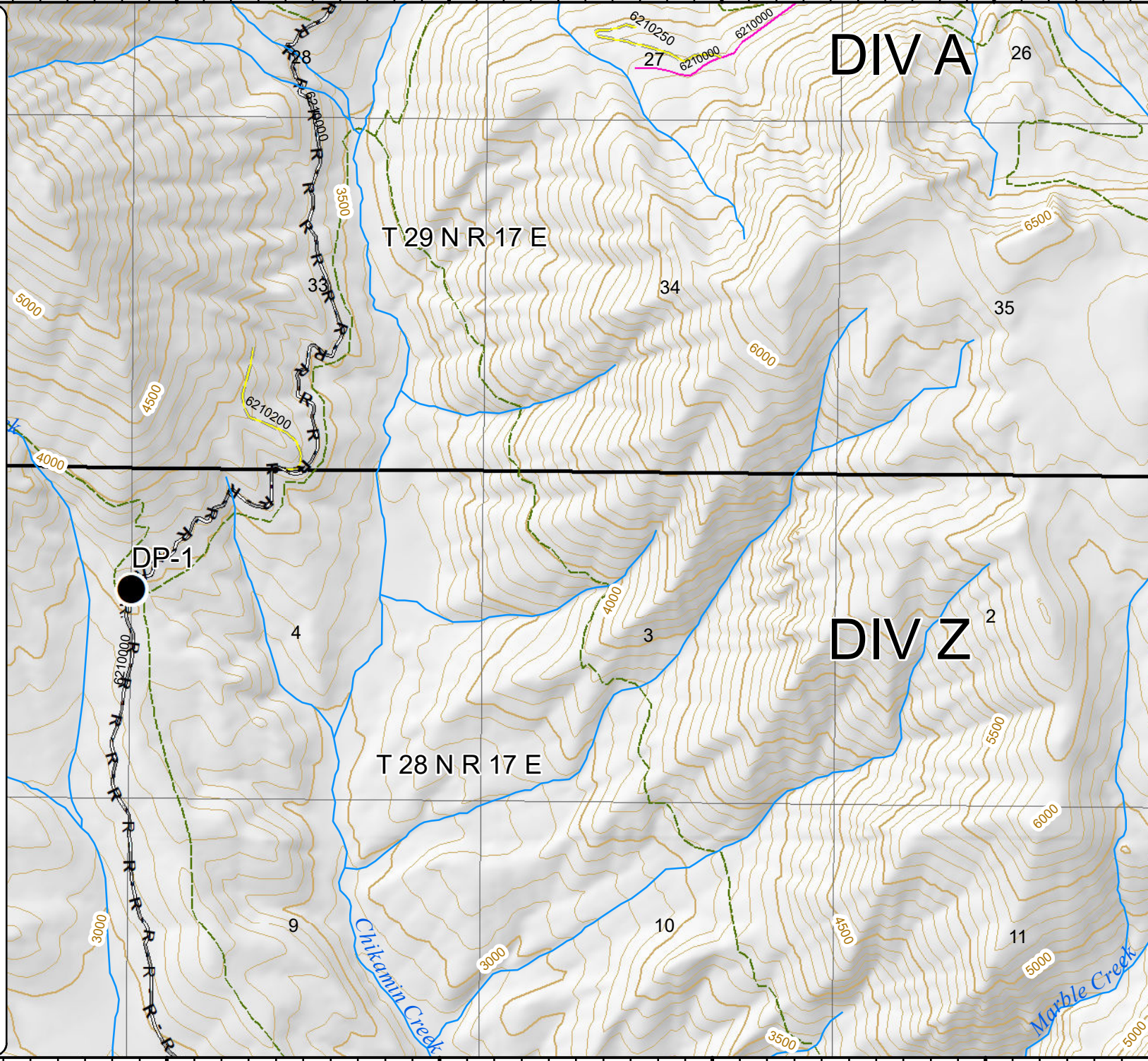
9

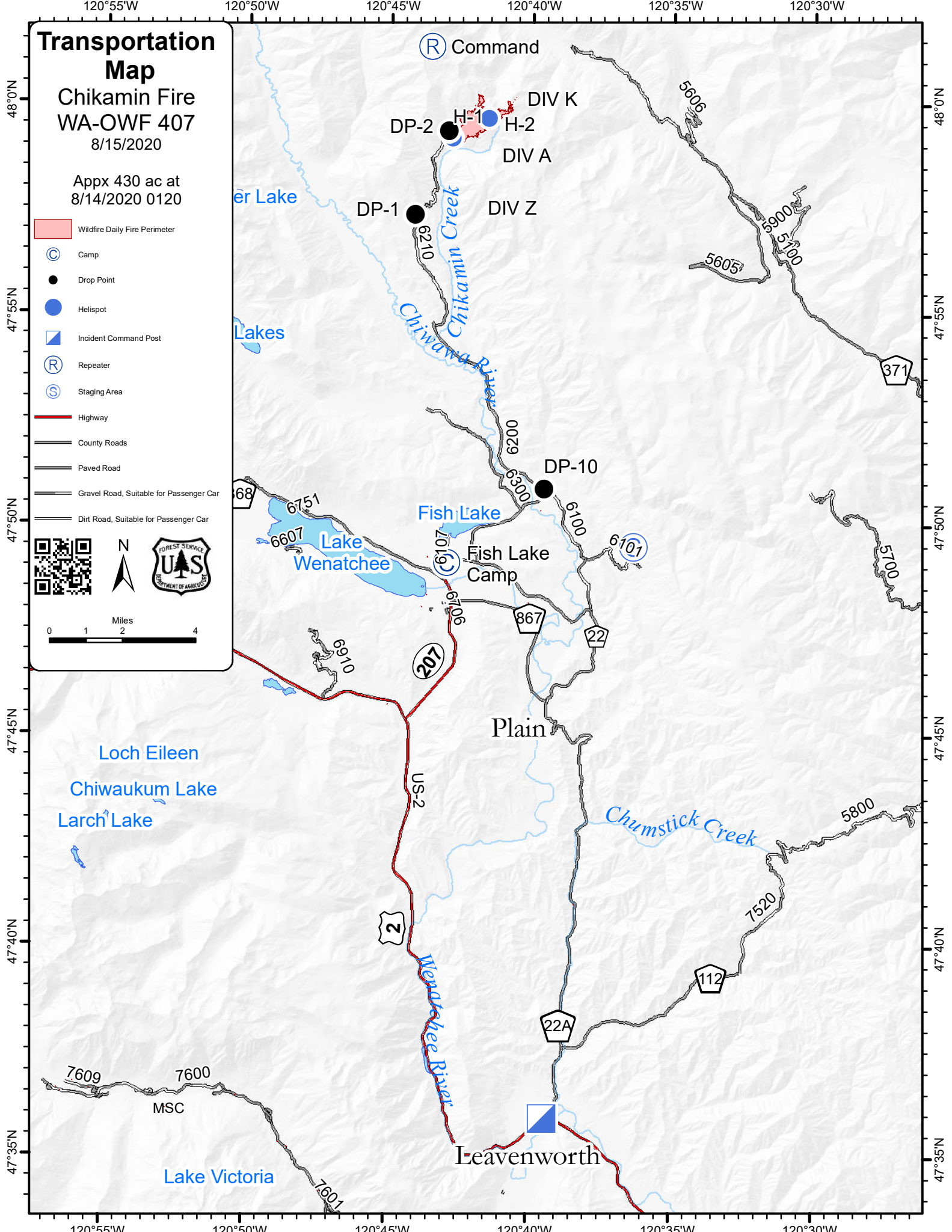
10

11

Chikamin Creek

Marble Creek





Transportation Map




Chikamin Fire

WA-OWF 407

8/15/2020

Appx 430 ac at 8/14/2020 0120

- Wildfire Daily Fire Perimeter
- Camp
- Drop Point
- Helispot
- Incident Command Post
- Repeater
- Staging Area
- Highway
- County Roads
- Paved Road
- Gravel Road, Suitable for Passenger Car
- Dirt Road, Suitable for Passenger Car



Miles 0 1 2 4