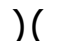



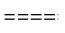





COLD CREEK FIRE WA-OWF-000639 IAP Map

Perimeter as of 09/17/20 @ 1500

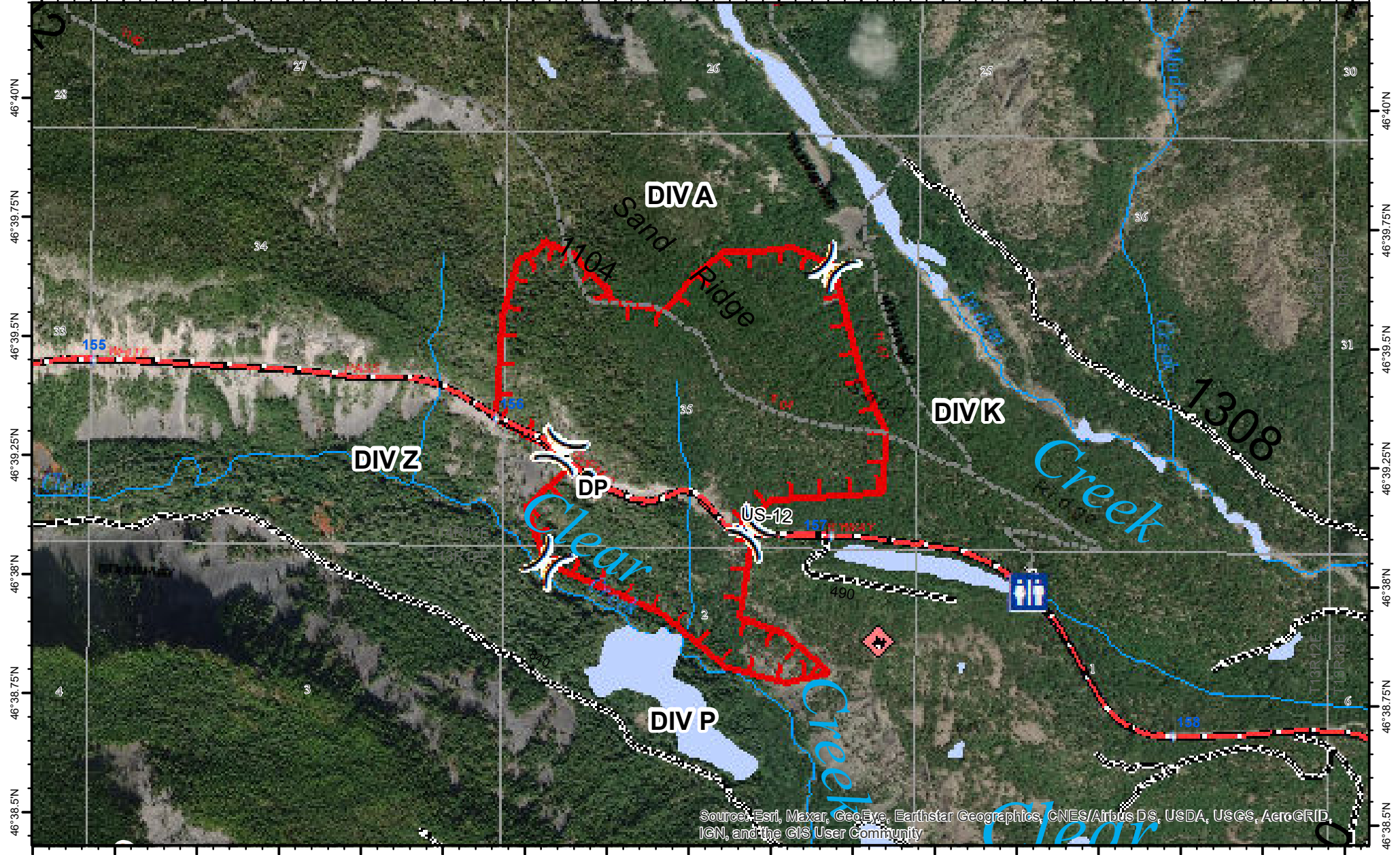
Approx: 400 ac

-  Division Break
-  FIRE BOUNDARY
-  Highway
-  Drop Point
-  Local Road
-  PortaPotty
-  Trails
-  Spot Fire



0 0.125 0.25 0.5

121°19.75'W 121°19.5'W 121°19.25'W 121°19'W 121°18.75'W 121°18.5'W 121°18.25'W 121°18'W 121°17.75'W 121°17.5'W 121°17.25'W 121°17'W 121°16.75'W 121°16.5'W 121°16.25'W 121°16'W 121°15.75'W



Source: Esri, Maxar, GeoEye, Earthstar Geographics, CNES/Airbus DS, USDA, USGS, AeroGRID, IGN, and the GIS User Community

121°19.75'W 121°19.5'W 121°19.25'W 121°19'W 121°18.75'W 121°18.5'W 121°18.25'W 121°18'W 121°17.75'W 121°17.5'W 121°17.25'W 121°17'W 121°16.75'W 121°16.5'W 121°16.25'W 121°16'W 121°15.75'W