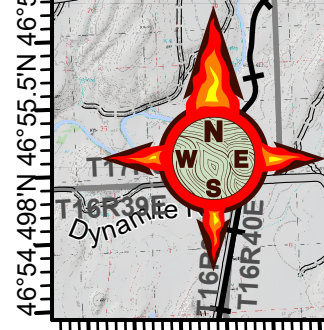
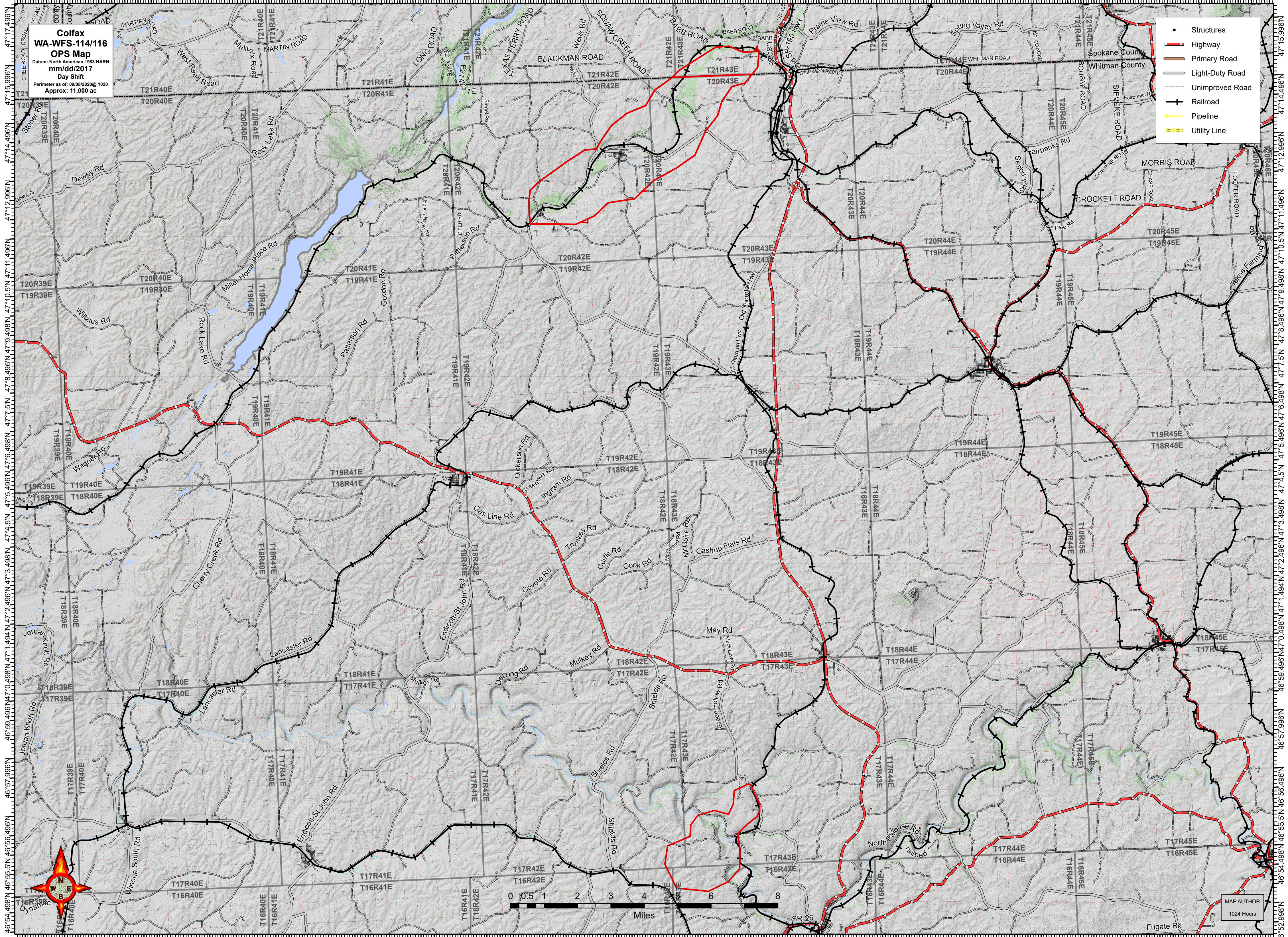


117°51.006'W 117°49.002'W 117°47.004'W 117°45'W 117°43.5'W 117°42'W 117°40.5'W 117°39'W 117°37.5'W 117°35.502'W 117°33.504'W 117°31.5'W 117°30'W 117°28.506'W 117°27'W 117°25.5'W 117°24'W 117°22.5'W 117°20.502'W 117°18.504'W 117°16.5'W 117°15'W 117°13.506'W 117°12'W 117°10.5'W 117°9'W 117°7.5'W 117°6.006'W 117°4.5'W

Colfax
WA-WFS-114/116
OPS Map
Datum: North American 1983 HARN
mm/dd/2017
Day Shift
Perimeter as of: 09/08/2020 @ 1020
Approx: 11,000 ac

- Structures
- Highway
- Primary Road
- Light-Duty Road
- Unimproved Road
- Railroad
- Pipeline
- Utility Line



MAP AUTHOR
1024 Hours

117°52.002'W 117°50.004'W 117°48'W 117°46.5'W 117°45'W 117°43.5'W 117°42'W 117°40.5'W 117°39'W 117°37.5'W 117°35.502'W 117°33.504'W 117°31.5'W 117°30'W 117°28.506'W 117°27'W 117°25.5'W 117°24'W 117°22.5'W 117°20.502'W 117°18.504'W 117°16.5'W 117°15'W 117°13.506'W 117°12'W 117°10.5'W 117°9'W 117°7.5'W 117°6.006'W 117°4.5'W